



SAN MATEO COUNTY
COMMUNITY
COLLEGE DISTRICT

Facilities Planning, Maintenance & Operations, Sustainability
Public Safety and Emergency Preparedness

New Employee Orientation



College of San Mateo

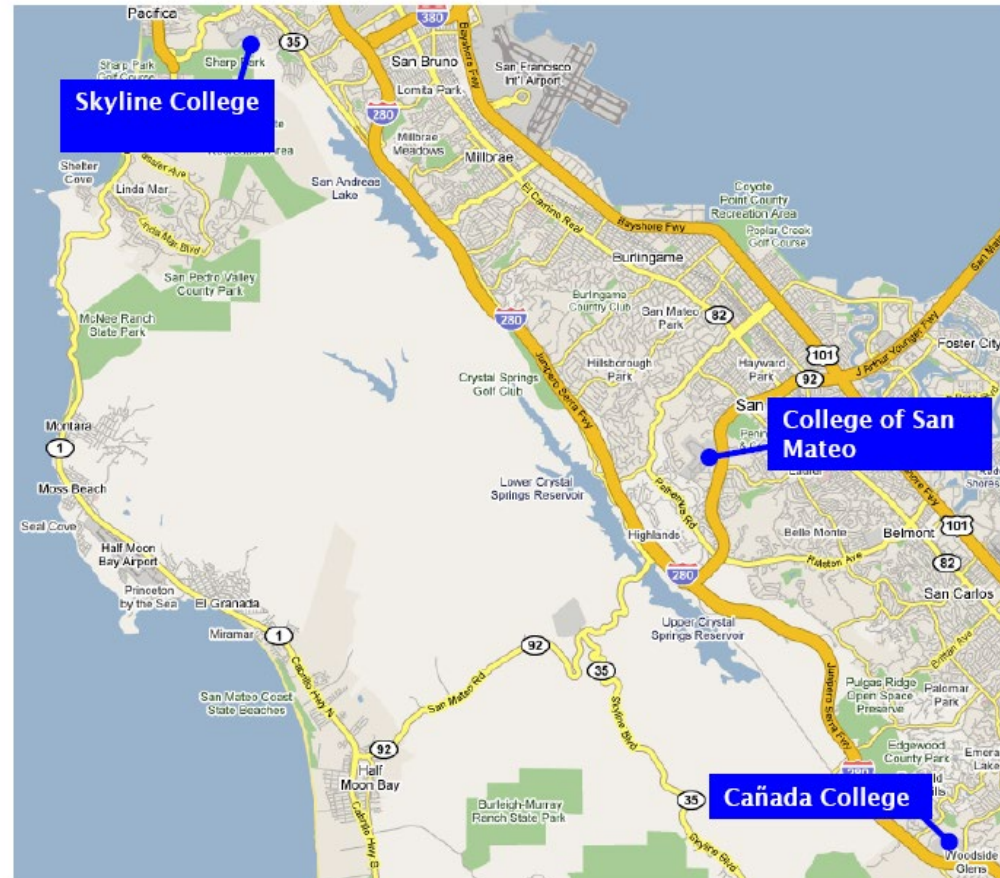


**Skyline
College**

Mission Statement

The mission of the Facilities Planning, Maintenance & Operations, and Public Safety Departments is to ensure a safe, effective, and inspiring environment that supports and enhances the instructional mission and ensures student success of the San Mateo County Community College District.

San Mateo County Map



Facilities Planning, Maintenance and Operations, and Public Safety Leadership Team

Michele Rudovsky
Chief Facilities and Operations Officer

Dennis Tordesillas
Facilities and Public Safety
Executive Assistant

Arlene Calibo
Facilities and Public Safety
Business Manager

Facilities Planning

Marie Mejia
Director of Capital Projects

Emergency Preparedness

Ben'Zara Minkin
Emergency Preparedness Manager

Sustainability

Jessica Ho
Energy and Sustainability Coordinator

Facilities Maintenance and Operations

Karen Pinkham
Facilities Manager, Cañada College

Robert Gutierrez
Facilities Manager, College of San Mateo

Max Warne
Facilities Manager, Skyline College

Department of Public Safety

Brian Tupper
Director of Public Safety

Jason Wendt
Public Safety Captain, Cañada College

Robert Dean
Public Safety Captain, College of San Mateo

Jim Vangele
Public Safety Captain, Skyline College

District Demographics

	Campus Acreage	Gross Square Feet	Assignable Square Footage	Buildings	Parking	Student Headcount (Spring 2023)	Student FTES (Spring 2023)	Full-Time & Part-Time Faculty & Staff (Fall 2022*)
Cañada College	124	451,335	298,140	34	2,025	5,731	663	306
College of San Mateo	150	710,169	482,655	38	3,737	8,130	1,415	495
Skyline College	102	560, 502	380,893	36	2,356	8,666	1,284	466
District Office	Incl. in CSM	24,929	15,788	1	Incl. in CSM	N/A	N/A	314†
TOTAL	376	1,746,935	1,177,476	109	8,118	22,527	3,362	1,581

† Includes Facilities, Public Safety and Auxiliary Services including athletic centers

*Data updated once a year only

SMCCCD Assets Portfolio

Exterior Environment

- ▶ 3 campuses totaling 376 acres
 - ▶ 144 acres are actively maintained
- ▶ 41 Public Parking Lots, 7,919 parking spaces, with associated wheel stops, striping and pavement markings
- ▶ 7.6 miles of roadway
- ▶ 48+ miles of underground pipeline (for electrical, communications, sanitary and storm drain, water supply, gas, irrigation)
- ▶ Over 3,000 exterior light fixtures
- ▶ 10 sports fields (8 synthetic) and 2 tracks
- ▶ 38+ acres of landscaped areas
- ▶ 22 tennis courts
- ▶ 4 swimming pools & 7 fountains
- ▶ DW Rolling Stock: 192 (Facilities 127, Public Safety 17)
- ▶ 50 Electric Vehicle Charging Stations



SMCCCD Assets Portfolio

Interior Environment

- ▶ 109 buildings with over 1.6M GSF
 - ▶ ~173 general lecture classrooms
 - ▶ ~165 labs
 - ▶ ~760 offices/administrative spaces
- ▶ 109 roofs
- ▶ 47 elevators
- ▶ ~4,000 interior and exterior doors
- ▶ ~14,000 windows
- ▶ ~600 pieces of mechanical equipment (air handlers, pumps, boilers, chillers, fans, transformers, actuators)
- ▶ ~23,000 Interior lights
- ▶ Over 250 Restrooms (with multiple sinks, toilets, urinals in each, ADA)



Maintenance & Operations Services Provided

Custodial

- Certified Technicians
- Cleaning Services
- Event Preparation
- Furniture Moves
- Office Set Ups

Groundskeeping

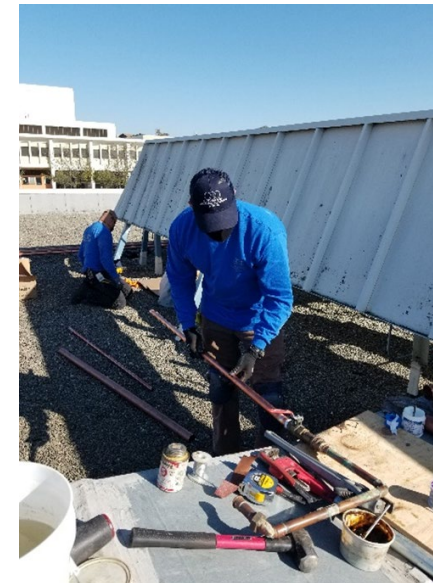
- Landscaping
- Tree Care
- Parking Lot Maintenance
- Sport Field Preparation
- Event Preparation



Custodial



Groundskeeping



Engineering

Engineering

- Building Operations
- Building Maintenance
- Lighting
- Heating Ventilation Air Conditioning
- Electrical
- Plumbing
- Energy Management
- Vehicle Repairs
- Pool Maintenance
- Road Maintenance
- Projects

How to Submit a Work Order



Get the latest information about COVID-19 resources.

Employee Portal

Internal Quick Links

Go to:

smccd.edu/portal



Facilities Helpcenter

<input type="text" value="username"/>	<input type="text" value="@smccd.edu"/>
<input type="text" value="email password"/>	

Enter email username &
password



Cañada College
Skyline College
College Of San Mateo
San Mateo District Office

Use the link in the confirmation email you received to access past work order requests.



© copyright by Onuma.com 2022

Select location and
complete form

Sustainability Programs



Built Environment

Campus Engagement

Curriculum Integration

Global Climate Action

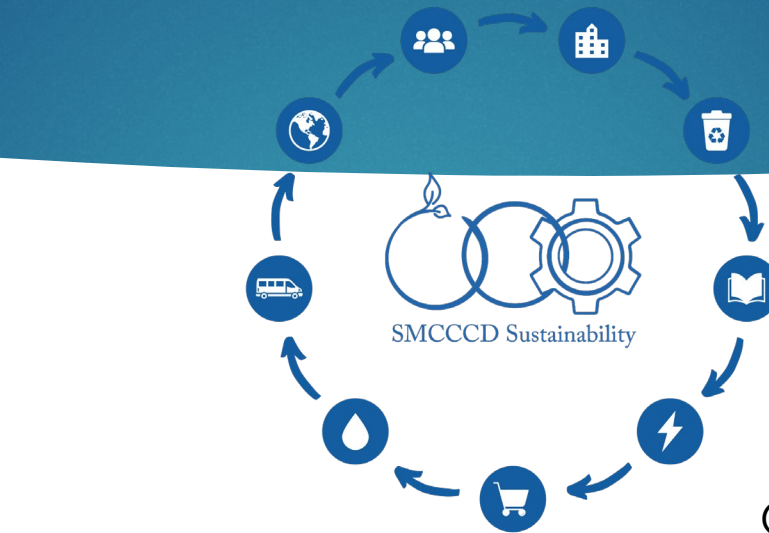
Sustainable Procurement

Transportation

Water Systems

Zero Net Energy

Zero Waste



Training



Outreach



Waste Audits



Sustainability Programs



Scan for
website &
Instagram!

Infrastructure Updates



Sort It out!



Resource Conservation



Sustainability Programs

Student Engagement Support

In & out of class presentations on any sustainability topic

- Curriculum integration support
- Earth Fests at all three campuses
- Waste Audits
- Zero Waste Ambassador Program
- Sustainability Career Center at CSM B1 !

Awards

1. CCCCCO Board of Governors Innovative Project Award (Medium District) for the California Community College system
2. San Mateo County Sustainability Award Winner
3. Green California Schools and Higher Education Leadership Award



Facilities Planning Department

Districtwide Facilities Master Plan Amendment

PLANNING PRINCIPLES



CIP3 In-Progress Projects

- CAN B3 Mechanical System Replacement
- CAN Erosion Mitigation
- CAN B1 Water Intrusion
- CAN Sports Fields Replacement
- CSM B9 Library Upgrade
- CSM B19 Emerging Technologies Renovations
- CSM B30 Team House + Baseball Team Modular
- CSM B36 Mechanical Upgrade
- CSM Beach Volleyball



CSM B19

CSM Beach Volleyball

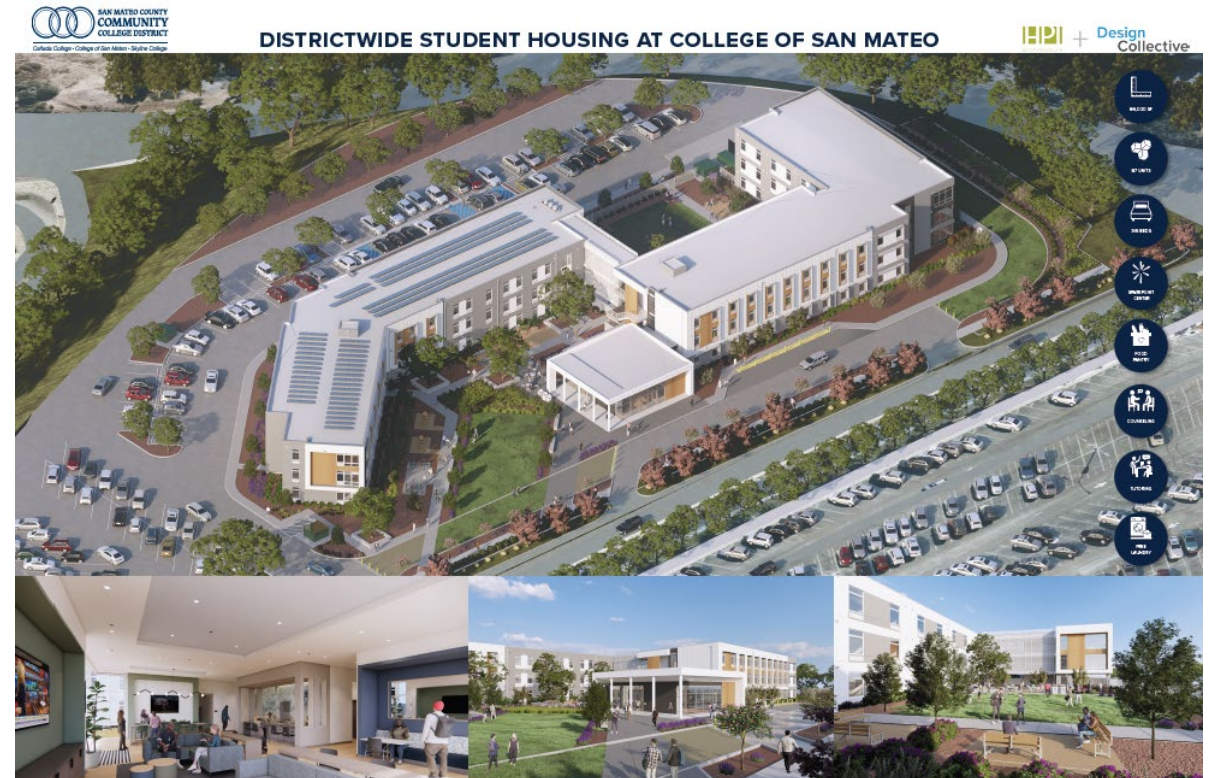


CAN B13



CIP3 In-Progress Projects

- SKY B1 Renovations
- SKY B3 & B7 Exhaust Fan and B7 HVAC Replacement
- SKY B2 Modernization
- SKY B6 Chiller Replacement
- SKY Distributed Antenna System (DAS)
- SKY Protruding Objects Project
- SKY Sports Fields Replacement
- DW Replacement of Irrigation System
- DW Student Housing at CSM
- DW ADA Transition Implementation & Signage Project
- DW Facilities Masterplan Amendments and Space Utilization



Department of Public Safety

650 738 7000



Public Safety Services

- Maintain Support Campus Community Public Safety
- Parking Enforcement
- Community Policing
- Medical Emergencies / First Aid / CPR / AED
- Handle Dynamic Situations
- Earthquake / Fire / General Emergency Evacuations
- Emergency Preparedness Training
- Liaison with Local Law Enforcement and Fire Department
- Safety Escort Service
- Lost and Found
- General Public Relations



Safety and Emergency Preparedness



District / Campus Safety Committees



Emergency Response

Building Captains/Disaster Service Workers |
Mutual Aid & MOUs with neighboring
County/Municipality



Three Levels of District Response

Level 1: Field Response

Level 2: CAT Activation

Level 3: EOC Activation



Emergency Plans

Emergency Operations Plan, Emergency
Action Plan, College Safety Plans
Board Policies / Administrative Procedures

<https://smccd.edu/emergency-management/index.php>



Crisis Communication Plan

Timely Warning

Emergency Alert

Critical Alert

Operational Notification



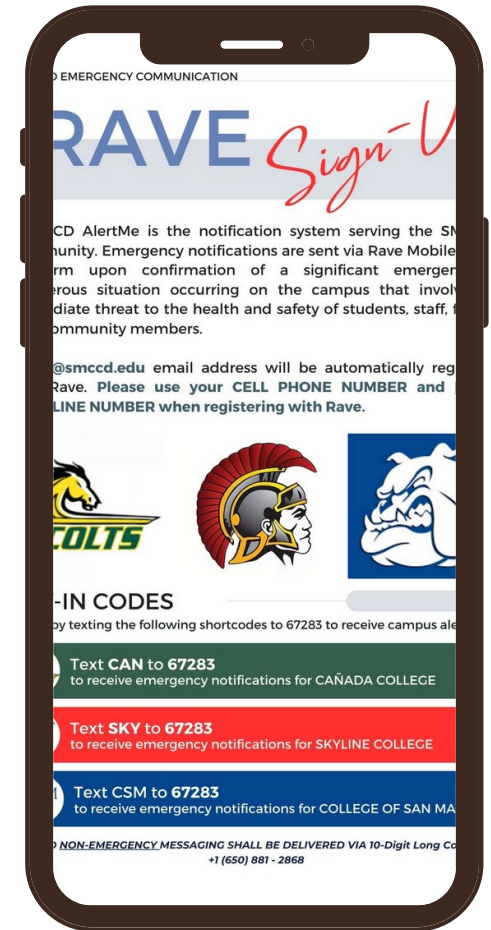
Emergency Notifications

RAVE Mobile Safety

Rave Guardian App – download in app store

Campus Alert Systems

- Public Announcement System
 - Monthly Test
- RAVE – Emergency Text Message Notification
 - 26,925 Subscribers District Wide
- UHF Radios – Communication District Wide
 - Monthly Tests
 - 250+ Radios District Wide
- San Mateo County (Our Partners)
 - SMC Alerts via Email and Text



RAVE Notification

Please use your CELL PHONE NUMBER and NOT a LANDLINE NUMBER when registering with Rave.

OPT-IN BY TEXTING



CAN to 67283



CSM to 67283



SKY to 67283

The San Mateo County Community College District (SMCCCD) has partnered with Rave Mobile Safety to enhance campus safety and emergency communication. Through the Rave Emergency Notification System and Rave Guardian App, students, faculty, and staff receive real-time alerts, access safety resources, and connect directly with campus security.

Safety and Emergency Preparedness Trainings



Emergency Preparedness Trainings

- **Safe Colleges Online**
 - Remote, self paced, and varied
- **Building Captains Program**
 - *Knowledge and skill* based trainings
- **Table Top Exercises**
 - Business Continuity
 - Plan Review
 - Policy Review

District Wide Drills

- The Great Shakeout & Evacuation
 - October 16, 2025 @ 10:15 am

Campus Wide Drills

- Violent Intruder Drills
 - Morning & Evening

Department Trainings

- Fire Drills at Child Development Centers
- International Program
- Middle College
- Promise Scholars
- Disability Resource Center
- Public Safety

Public Safety Technology

- Video Cameras
 - 800+ District Wide
- ACAMs (Access Control System)
 - Employee Photo ID
 - 1,281 Points District Wide
- Automated External Defibrillators (AED)
 - 70+ Units District Wide
- 911 System
- Duress Buttons
 - Text
 - Email
 - 66 District Wide (CSM 38, CAN 14, SKY 14)
- Lockdown Button



ONE TEAM!



Facilities Excellence = Customer Service * Professionalism * Team Work * Communication

Public Safety Excellence = Safety * Education * Service

"Facilities & Public Safety Excellence"

Facilities Planning Maintenance & Operations Public Safety

