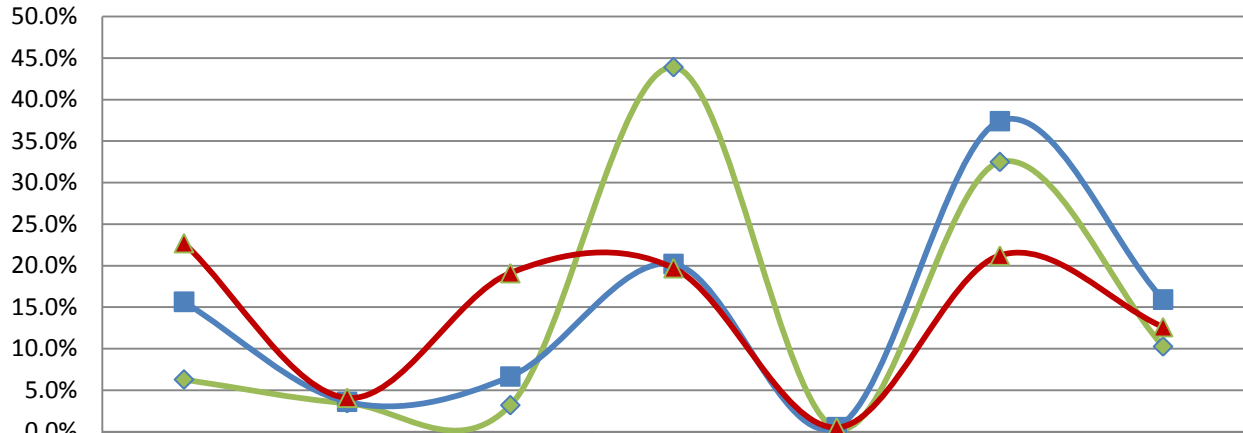
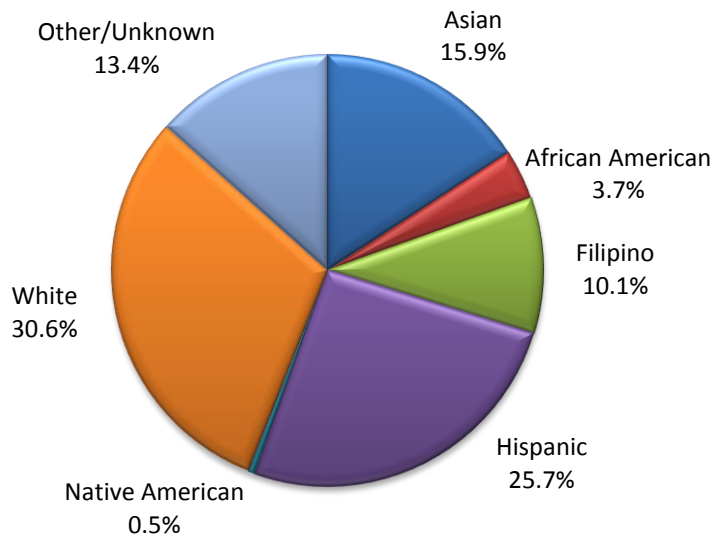


Fall 2008 Student Ethnicity



| | Asian | African American | Filipino | Hispanic | Native American | White | Other/Unknown |
|---------|-------|------------------|----------|----------|-----------------|-------|---------------|
| Cañada | 6.3% | 3.4% | 3.2% | 43.9% | 0.4% | 32.5% | 10.3% |
| CSM | 15.6% | 3.6% | 6.7% | 20.2% | 0.6% | 37.4% | 15.9% |
| Skyline | 22.7% | 4.1% | 19.1% | 19.7% | 0.5% | 21.2% | 12.6% |

Districtwide Student Ethnicity - Fall 2008



3 year Trend

| Ethnicity | Cañada | | | CSM | | | Skyline | | | District | | |
|------------------|---------|---------|---------|---------|---------|---------|---------|---------|---------|----------|---------|---------|
| | Fa 2006 | Fa 2007 | Fa 2008 | Fa 2006 | Fa 2007 | Fa 2008 | Fa 2006 | Fa 2007 | Fa 2008 | Fa 2006 | Fa 2007 | Fa 2008 |
| Asian | 461 | 443 | 413 | 1865 | 1823 | 1755 | 2050 | 2093 | 2148 | 4376 | 4359 | 4316 |
| African American | 205 | 233 | 226 | 394 | 410 | 405 | 280 | 299 | 386 | 879 | 942 | 1017 |
| Filipino | 241 | 223 | 210 | 723 | 731 | 746 | 1514 | 1630 | 1806 | 2478 | 2584 | 2762 |
| Hispanic | 2614 | 2778 | 2881 | 2074 | 2199 | 2266 | 1593 | 1689 | 1862 | 6281 | 6666 | 7009 |
| Native American | 25 | 21 | 25 | 63 | 51 | 62 | 41 | 38 | 49 | 129 | 110 | 136 |
| White | 2081 | 2209 | 2132 | 4177 | 4292 | 4196 | 1869 | 1970 | 2007 | 8127 | 8471 | 8335 |
| Other/Unknown | 552 | 682 | 674 | 1338 | 1577 | 1785 | 882 | 1003 | 1191 | 2772 | 3262 | 3650 |