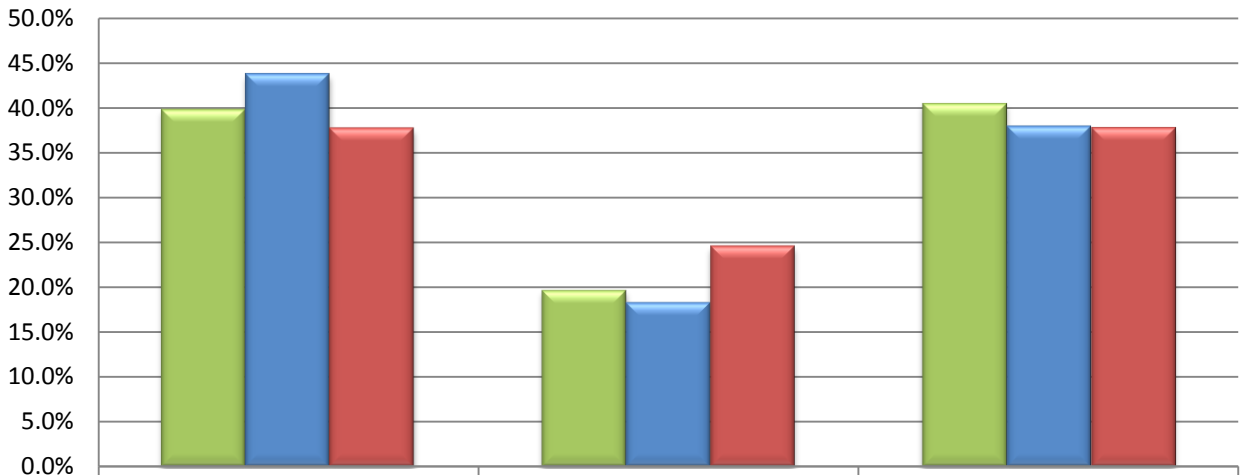
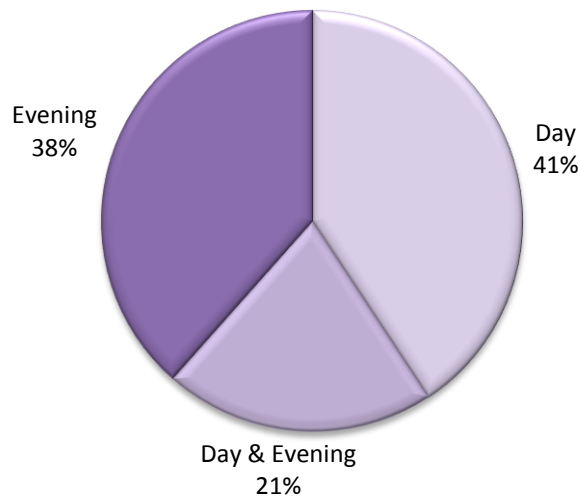


Fall 2008 Student Enrollment - Day/Eve



	Day	Day & Evening	Evening
Cañada	39.8%	19.7%	40.5%
CSM	43.7%	18.3%	37.9%
Skyline	37.7%	24.6%	37.7%

Districtwide Student Enrollment Fall 2008 -Day/Eve



3 year Trend

Day/Eve	Cañada			CSM			Skyline			District		
	Fa 2006	Fa 2007	Fa 2008	Fa 2006	Fa 2007	Fa 2008	Fa 2006	Fa 2007	Fa 2008	Fa 2006	Fa 2007	Fa 2008
Day	2662	2754	2613	4585	4902	4906	3189	3252	3561	10436	10908	11080
Evening	2472	2742	2656	4071	4152	4255	3164	3383	3562	9707	10277	10473
Day & Evenin	1045	1093	1292	1978	2029	2054	1876	2078	2322	4899	5200	5668