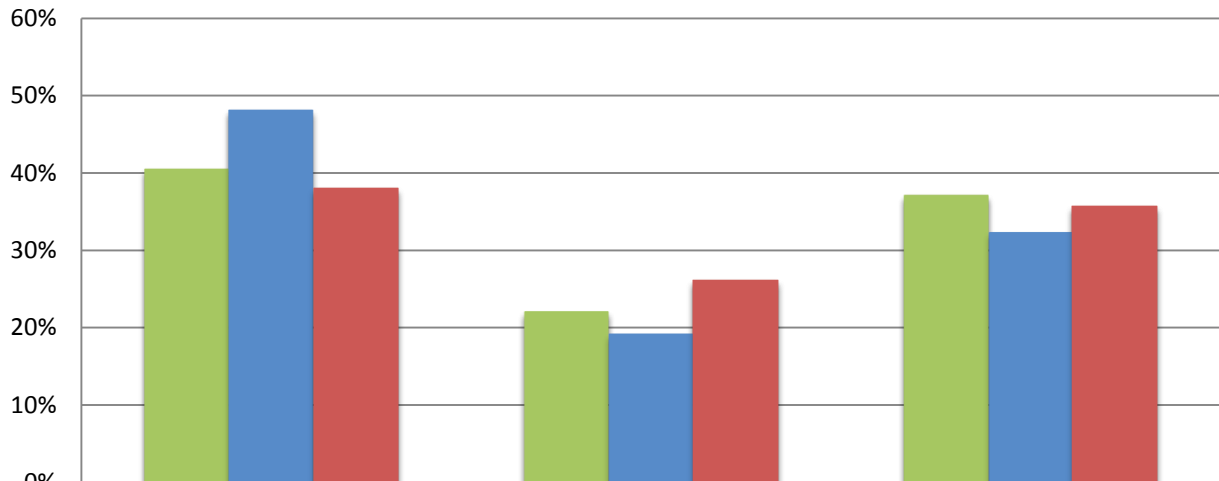
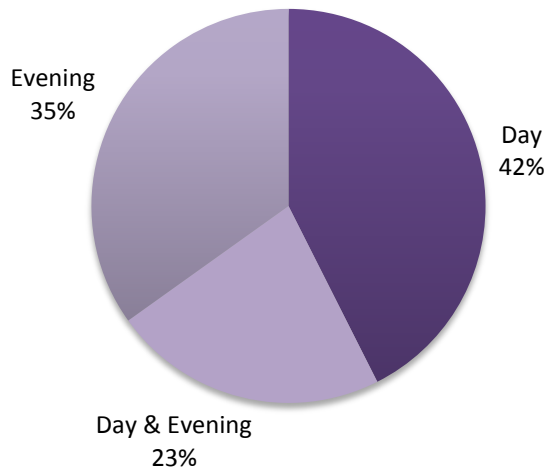


Fall 2010 Student Enrollment - Day/Eve



	Day	Day & Evening	Evening
Cañada	40.6%	22.2%	37.2%
CSM	48.2%	19.3%	32.5%
Skyline	38.1%	26.1%	35.8%

District Student Enrollment Fall 2010 -Day/Eve



3 year Trend

Day/Eve	Cañada			CSM			Skyline			District		
	Fa 2008	Fa 2009	Fa 2010	Fa 2008	Fa 2009	Fa 2010	Fa 2008	Fa 2009	Fa 2010	Fa 2008	Fa 2009	Fa 2010
Day	2,613	2,899	2,931	4,906	5,140	5,104	3,561	3,758	3,877	11,080	11,797	11,912
Day & Evening	1,292	2,815	1,606	2,054	3,998	2,048	2,322	4,172	2,661	5,668	10,985	6,315
Evening	2,656	1,534	2,685	4,255	2,360	3,436	3,562	2,642	3,642	10,473	6,536	9,763