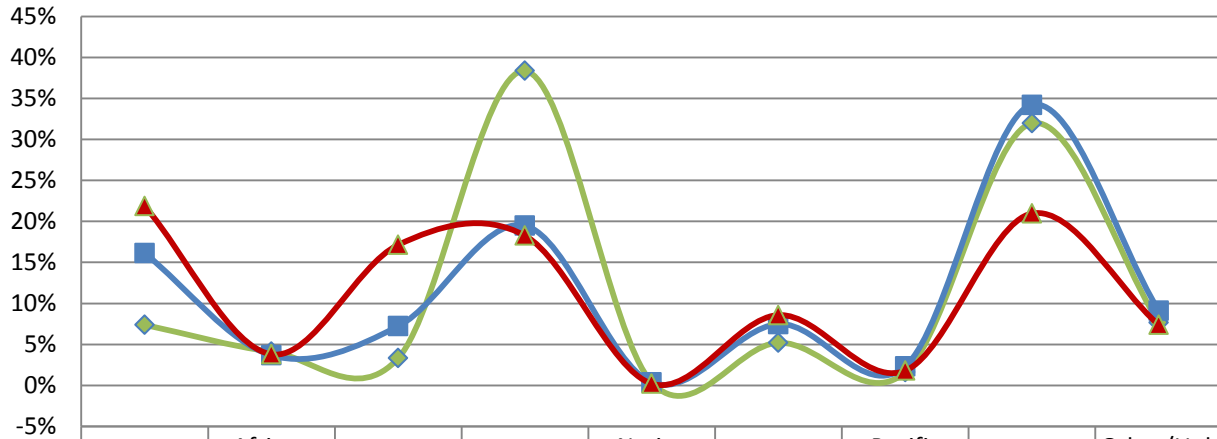
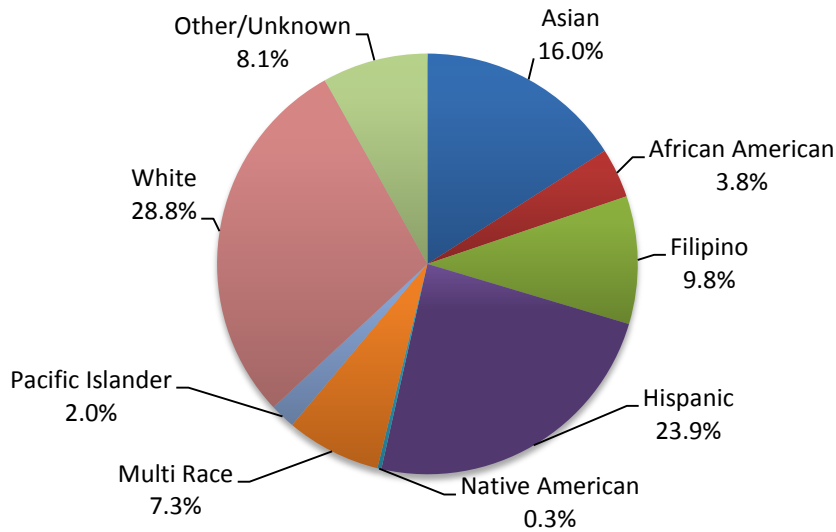


Fall 2010 Student Ethnicity



	Asian	African American	Filipino	Hispanic	Native American	Multi Race	Pacific Islander	White	Other/Unknown
Cañada	7.4%	4.1%	3.3%	38.4%	0.4%	5.2%	1.6%	32.0%	7.7%
CSM	16.1%	3.7%	7.2%	19.5%	0.4%	7.5%	2.3%	34.2%	9.1%
Skyline	21.9%	3.8%	17.1%	18.3%	0.2%	8.6%	1.8%	21.0%	7.4%

District Student Ethnicity - Fall 2010



3 year Trend

Ethnicity	Cañada			CSM			Skyline			District		
	Fa 2008	Fa 2009	Fa 2010	Fa 2008	Fa 2009	Fa 2010	Fa 2008	Fa 2009	Fa 2010	Fa 2008	Fa 2009	Fa 2010
Asian	413	503	533	1,755	1,797	1,708	2,148	2,307	2,227	4,316	4,607	4,468
African American	226	282	297	405	394	389	386	439	386	1,017	1,115	1,072
Filipino	210	213	240	746	791	764	1,806	1,909	1,745	2,762	2,913	2,749
Hispanic	2,881	2,876	2,770	2,266	2,242	2,062	1,862	1,928	1,859	7,009	7,046	6,691
Native American	25	31	26	62	45	38	49	37	22	136	113	86
Multi Race		146	376		362	792		378	873		886	2,041
Pacific Islander		115	117		243	247		243	183		601	547
White	2,132	2,427	2,309	4,196	4,234	3,622	2,007	2,375	2,134	8,335	9,036	8,065
Other/Unknown	674	655	554	1,785	1,400	966	1,191	988	751	3,650	3,043	2,271