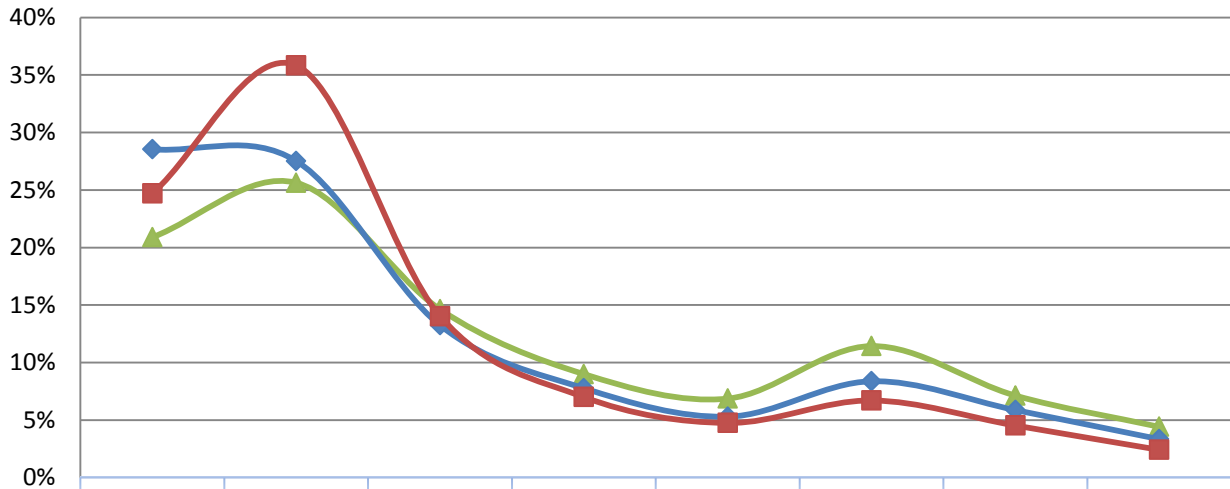
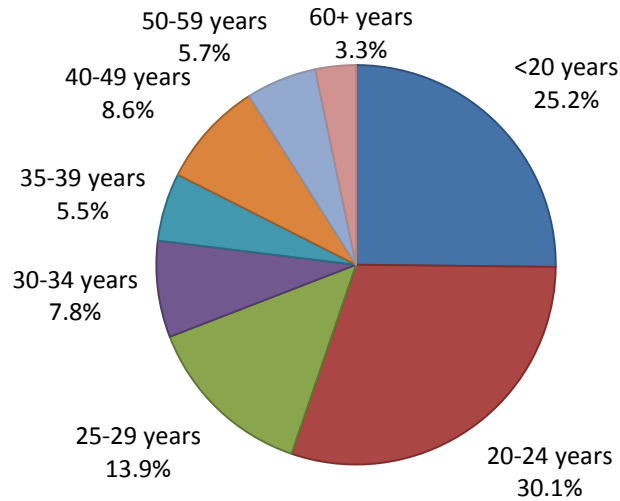


**Fall 2010 Student Age Distribution**



	<20 years	20-24 years	25-29 years	30-34 years	35-39 years	40-49 years	50-59 years	60+ years
Cañada	20.9%	25.6%	14.6%	9.0%	6.9%	11.4%	7.1%	4.4%
CSM	28.5%	27.5%	13.2%	7.8%	5.3%	8.4%	5.9%	3.3%
Skyline	24.7%	35.8%	14.0%	7.0%	4.8%	6.7%	4.5%	2.4%

**District Student Age Distribution - Fall 2010**



Avg Age:  
 Cañada: 29.8  
 CSM: 27.6  
 Skyline: 26.5

Median Age:  
 Cañada: 25  
 CSM: 22.5  
 Skyline: 22

**3 year Trend**

Age	Cañada			CSM			Skyline			District		
	Fa 2008	Fa 2009	Fa 2010	Fa 2008	Fa 2009	Fa 2010	Fa 2008	Fa 2009	Fa 2010	Fa 2008	Fa 2009	Fa 2010
<20 years	1,393	1,566	1,509	3,066	3,302	3,022	2,406	2,546	2,514	6,865	7,414	7,045
20-24 years	1,498	1,719	1,851	2,909	3,002	2,914	3,139	3,719	3,648	7,546	8,440	8,413
25-29 years	911	1,015	1,056	1,381	1,399	1,402	1,289	1,497	1,429	3,581	3,911	3,887
30-34 years	649	670	650	852	855	823	642	751	713	2,143	2,276	2,186
35-39 years	473	496	496	672	626	561	506	540	484	1,651	1,662	1,541
40-49 years	770	807	826	1,071	1,043	887	696	732	683	2,537	2,582	2,396
50-59 years	502	574	515	805	799	622	500	539	461	1,807	1,912	1,598
60+ years	365	401	319	449	480	354	269	280	246	1,083	1,161	919