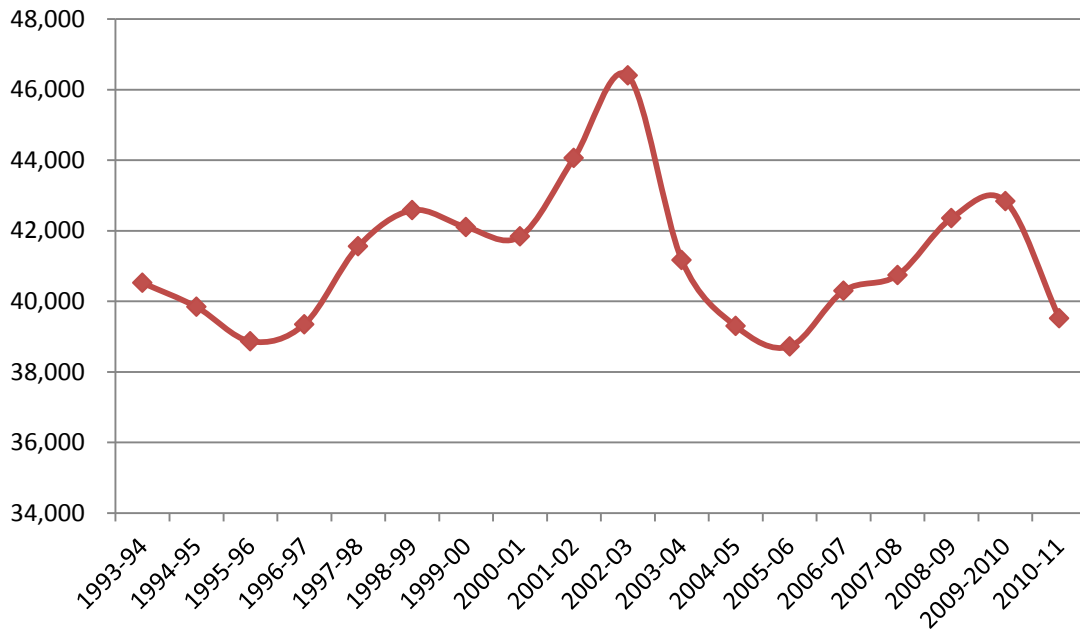


Unduplicated Headcounts Annual



Annual Unduplicated Head Counts

Year	Headcounts
2010-11	39,521
2009-10	42,835
2008-09	42,358
2007-08	40,739
2006-07	40,296
2005-06	38,721
2004-05	39,299
2003-04	41,167
2002-03	46,398
2001-02	44,060
2000-01	41,838
1999-00	42,105
1998-99	42,581
1997-98	41,555
1996-97	39,349
1995-96	38,868
1994-95	39,841
1993-94	40,523

source: Banner SYQECNT