



SAN MATEO COUNTY
COMMUNITY COLLEGE DISTRICT

DESIGN-BUILD PRE-QUALIFICATION CONFERENCE

December 20, 2006



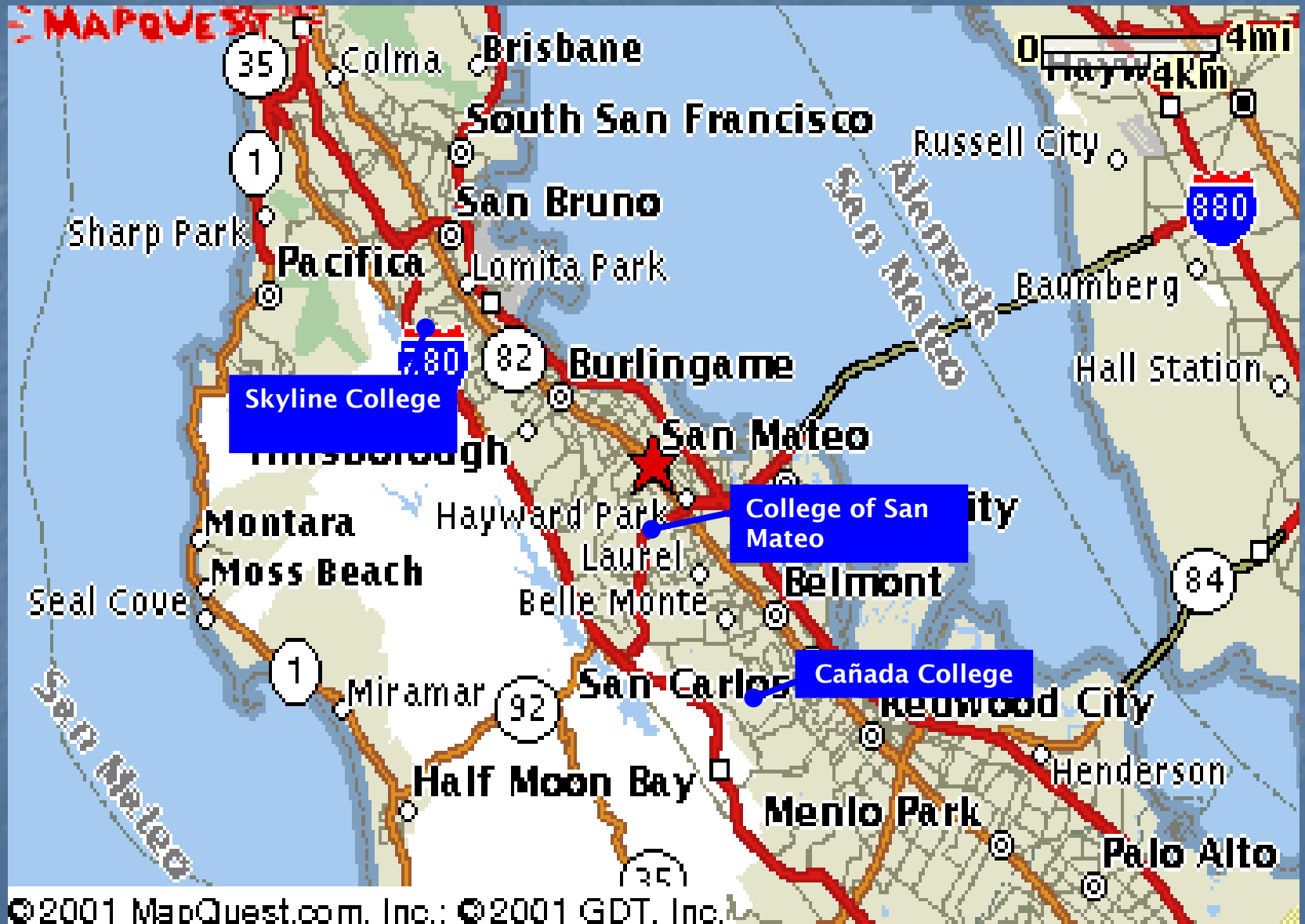
Design-Build Opportunities

- College of San Mateo - \$120,000,000 starting in 2007
- Skyline College - \$70,000,000 starting in 2007

Pre-Qualification Conference Administration

- Mandatory Conference
(for GCs)
- Sign-in Sheet
- http://www.smccd.edu/accounts/facilities/planco_nstruct/DW_NTC.html

San Mateo County Map



Capital Improvement Program Phase 1

- Measure C Passed in 2001
 - \$207 Million Local Bond Measure
 - Over \$100 Million State/Other Funds
- Approximately \$300M Put in Place
 - 7 new buildings (4 design-build)
 - 6 renovations and seismic upgrades
 - Infrastructure
 - Athletic facility upgrades (design-build)
 - Energy efficiency measures (design-build)

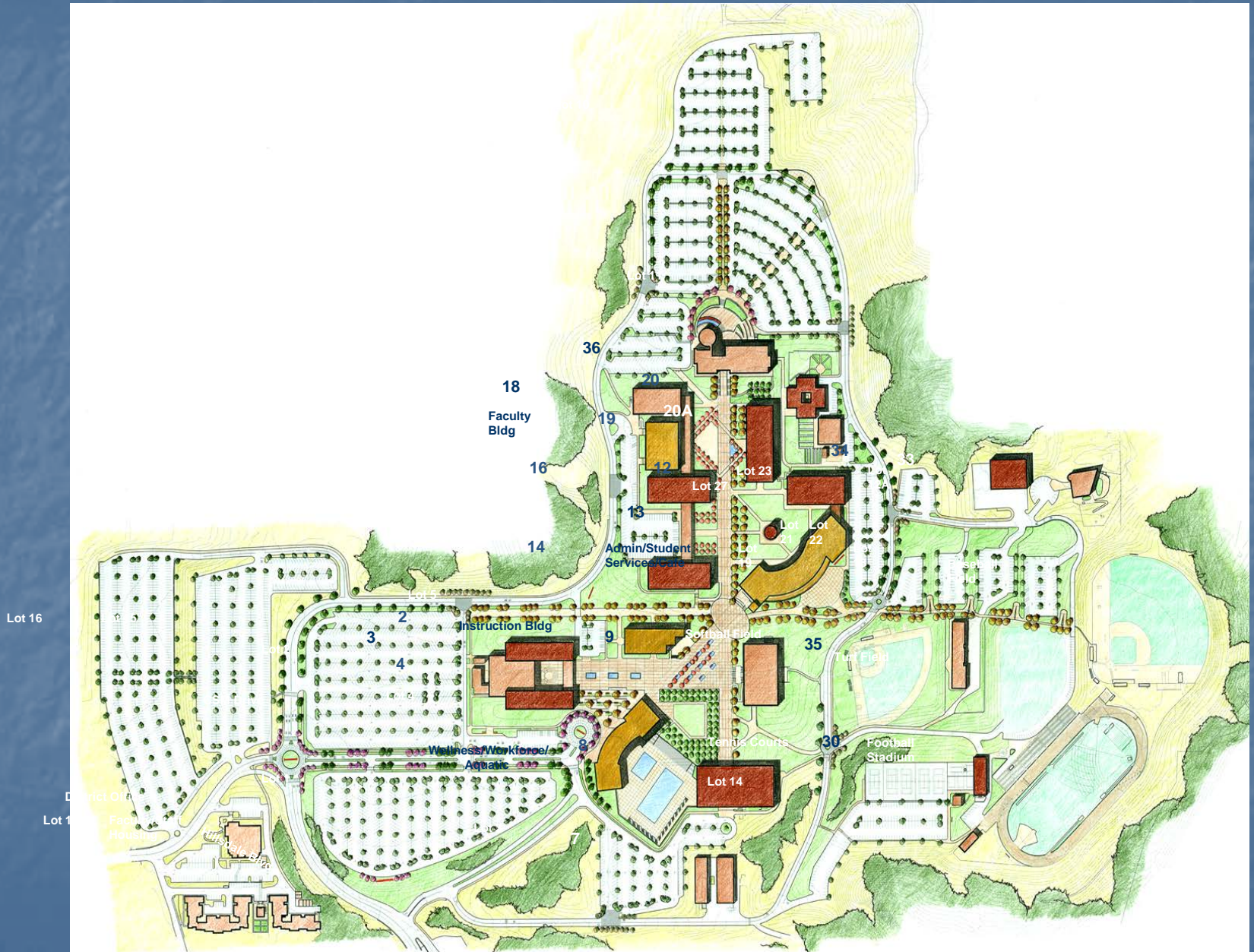
Capital Improvement Program Phase 2

- Measure A Passed in 2005
 - \$468 Million Local Bond Measure
 - Additional \$50 Million State/Other Funds
- New buildings, renovations, landscaping, infrastructure, equipment, technology

College of San Mateo Design-Build Project

- Student Services Building (85,000 GSF)
- Workforce/Wellness/Aquatic Center (65,000 GSF)
- Faculty Center (35,000 GSF)
- Instructional Building (25,000 GSF)
- Landmark Entries, Landscaping, Pathways, Parking
- Building Demolition (6 structures)

College of San Mateo



Skyline College

Design-Build Projects

- Administration Building (30,000 GSF)
- Cosmetology/Wellness Center (70,000 GSF)
- Automotive Transmission Building (10,000 GSF)
- Landmark Entries, Landscape, Pathways, Parking
- Building Demolition (8 structures)

Skyline College



Bridging Architects

- College of San Mateo – Steinberg Architects
- Skyline College – Kwan Henmi

Process and Timeline

- **Pre-Qualification Applications available: December 13, 2006 on the website**

- **Submittals Due**
 - January 17, 2007, 4:00 PM
 - SMCCCD District Office, 3401 CSM Drive, San Mateo, CA 94402

- **Qualification Process**
 - Screening of Pre-Qualification Applications (January 2007)
 - Interview 6 long listed teams (early February 2007)
 - Short list 3 teams per project (late February 2007)

- **Request for Proposals**
 - Issue RFP to Design-Build Teams - March 2007
 - Proposal Responses Due - June 2007

- **Contract Award: September 2007**

Contents of Pre-Qualification Package Part 1

- **Instructions for Completing the Application**
- **Project Labor Agreement**
- **Professional Liability Insurance**
- **Owner Controlled Insurance Program**

Pre-Qualification Package

Part 2 - Application

- **General Information** - Contractor, Architect, Principal Engineers, Subcontractors
- **Project Experience**
 - CSM – Three DB Projects > \$100 MM
 - Skyline – Three DB Project > \$30 MM
- **Reference Documents** – On Website
 - District Contract
 - Professional Liability Insurance (design)
 - OCIP compliance (construction)
- **Assistance Clinic (District Office)**
 - December 21st, 10:00 AM

Question & Answer

plan@smccd.edu