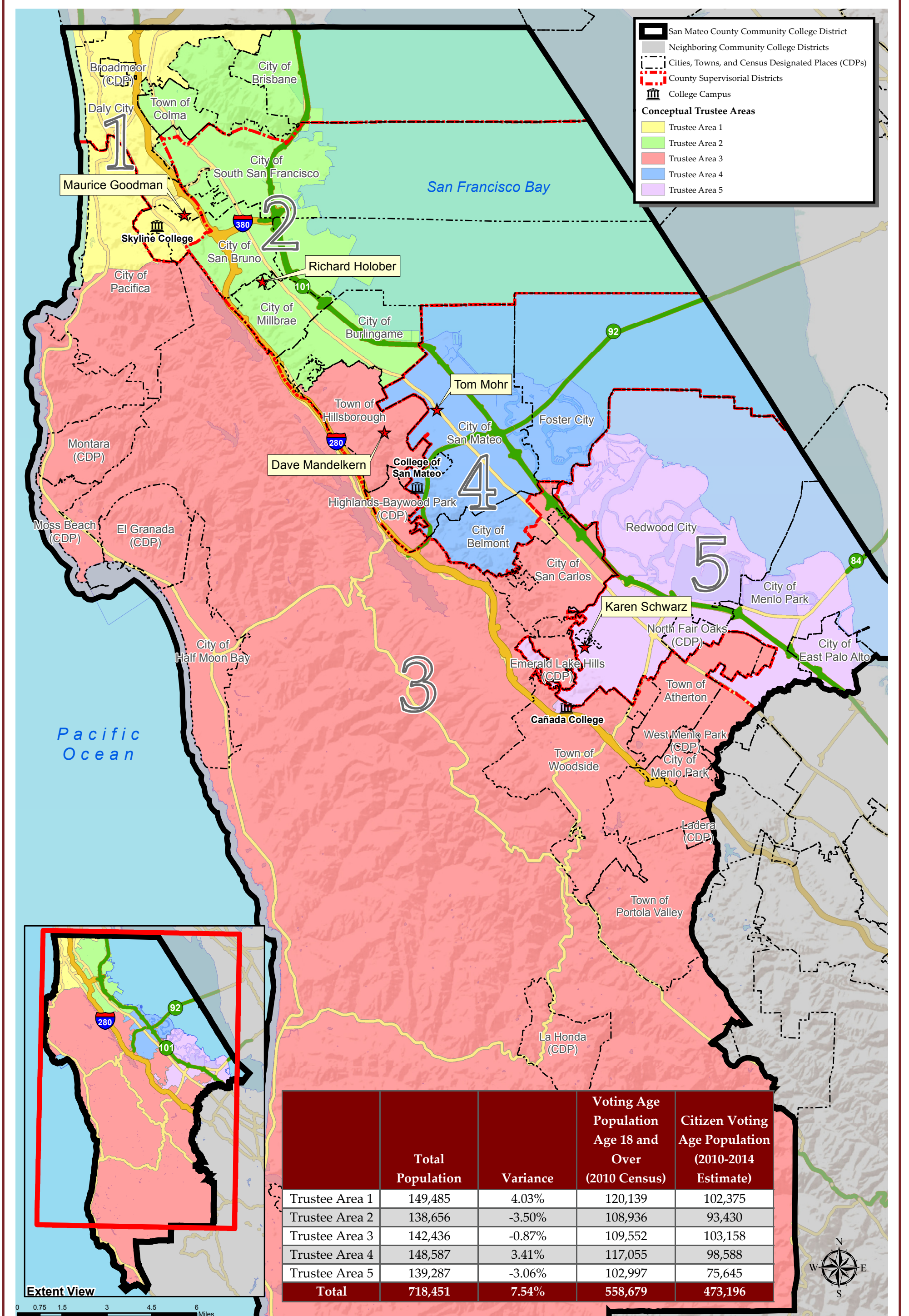


SAN MATEO COUNTY COMMUNITY COLLEGE DISTRICT CONCEPTUAL TRUSTEE AREAS - SCENARIO 2

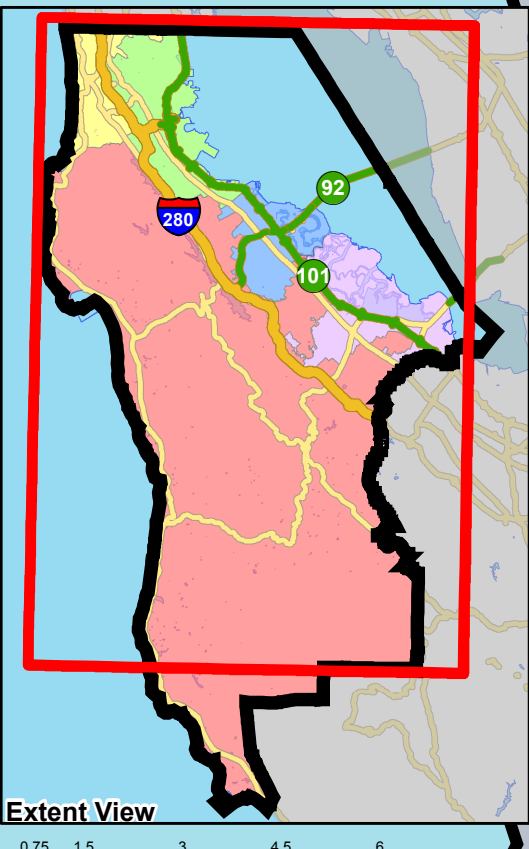


San Mateo County Community College District

- San Mateo County Community College District
- Neighboring Community College Districts
- Cities, Towns, and Census Designated Places (CDPs)
- County Supervisorial Districts
- College Campus

Conceptual Trustee Areas

- Trustee Area 1
- Trustee Area 2
- Trustee Area 3
- Trustee Area 4
- Trustee Area 5



	Total Population	Variance	Voting Age Population Age 18 and Over (2010 Census)	Citizen Voting Age Population (2010-2014 Estimate)
Trustee Area 1	149,485	4.03%	120,139	102,375
Trustee Area 2	138,656	-3.50%	108,936	93,430
Trustee Area 3	142,436	-0.87%	109,552	103,158
Trustee Area 4	148,587	3.41%	117,055	98,588
Trustee Area 5	139,287	-3.06%	102,997	75,645
Total	718,451	7.54%	558,679	473,196

0 0.75 1.5 3 4.5 6 Miles
MAY 2017



San Mateo County Community College District

Conceptual Trustee Areas - Scenario 2

Total Population

	Trustee Area 1	Trustee Area 2	Trustee Area 3	Trustee Area 4	Trustee Area 5	Variance
Population	149,485	138,656	142,436	148,587	139,287	
Population Variance	5,795	-5,034	-1,254	4,897	-4,403	7.54%
	4.03%	-3.50%	-0.87%	3.41%	-3.06%	
Hispanic/Latino	32,083	38,483	17,769	29,941	64,226	
	21.46%	27.75%	12.48%	20.15%	46.11%	
White	29,038	52,998	102,065	71,287	48,221	
	19.43%	38.22%	71.66%	47.98%	34.62%	
Black/ African American	4,878	2,149	1,098	2,918	7,720	
	3.26%	1.55%	0.77%	1.96%	5.54%	
American Indian/ Alaska Native	211	249	222	197	246	
	0.14%	0.18%	0.16%	0.13%	0.18%	
Asian	76,313	37,108	15,433	35,839	11,241	
	51.05%	26.76%	10.84%	24.12%	8.07%	
Native Hawaiian/ Other Pacific Islander	1,442	2,352	415	2,249	3,426	
	0.96%	1.70%	0.29%	1.51%	2.46%	
Other	675	701	412	521	400	
	0.45%	0.51%	0.29%	0.35%	0.29%	
Two or More Races	4,845	4,616	5,022	5,635	3,807	
	3.24%	3.33%	3.53%	3.79%	2.73%	

Citizens by Voting Age Population Estimate (2010-2014)

	Trustee Area 1	Trustee Area 2	Trustee Area 3	Trustee Area 4	Trustee Area 5	Variance
Population	102,375	93,430	103,158	98,588	75,645	
Population Variance	7,736	-1,209	8,519	3,949	-18,994	
	8.17%	-1.28%	9.00%	4.17%	-20.07%	
Hispanic/Latino	16,739	20,019	9,676	13,276	20,980	
	16.35%	21.43%	9.38%	13.47%	27.73%	
White	23,585	42,293	78,905	57,202	37,613	
	23.04%	45.27%	76.49%	58.02%	49.72%	
Black/ African American	4,045	1,614	987	2,544	5,687	
	3.95%	1.73%	0.96%	2.58%	7.52%	
American Indian/ Alaska Native	198	231	61	162	205	
	0.19%	0.25%	0.06%	0.16%	0.27%	
Asian	54,133	25,801	11,013	21,391	7,624	
	52.88%	27.62%	10.68%	21.70%	10.08%	
Native Hawaiian/ Other Pacific Islander	1,017	1,376	152	833	1,804	
	0.99%	1.47%	0.15%	0.84%	2.38%	
Other	0	0	0	0	0	
	0.00%	0.00%	0.00%	0.00%	0.00%	
Two or More Races	2,658	2,096	2,364	3,180	1,732	
	2.60%	2.24%	2.29%	3.23%	2.29%	