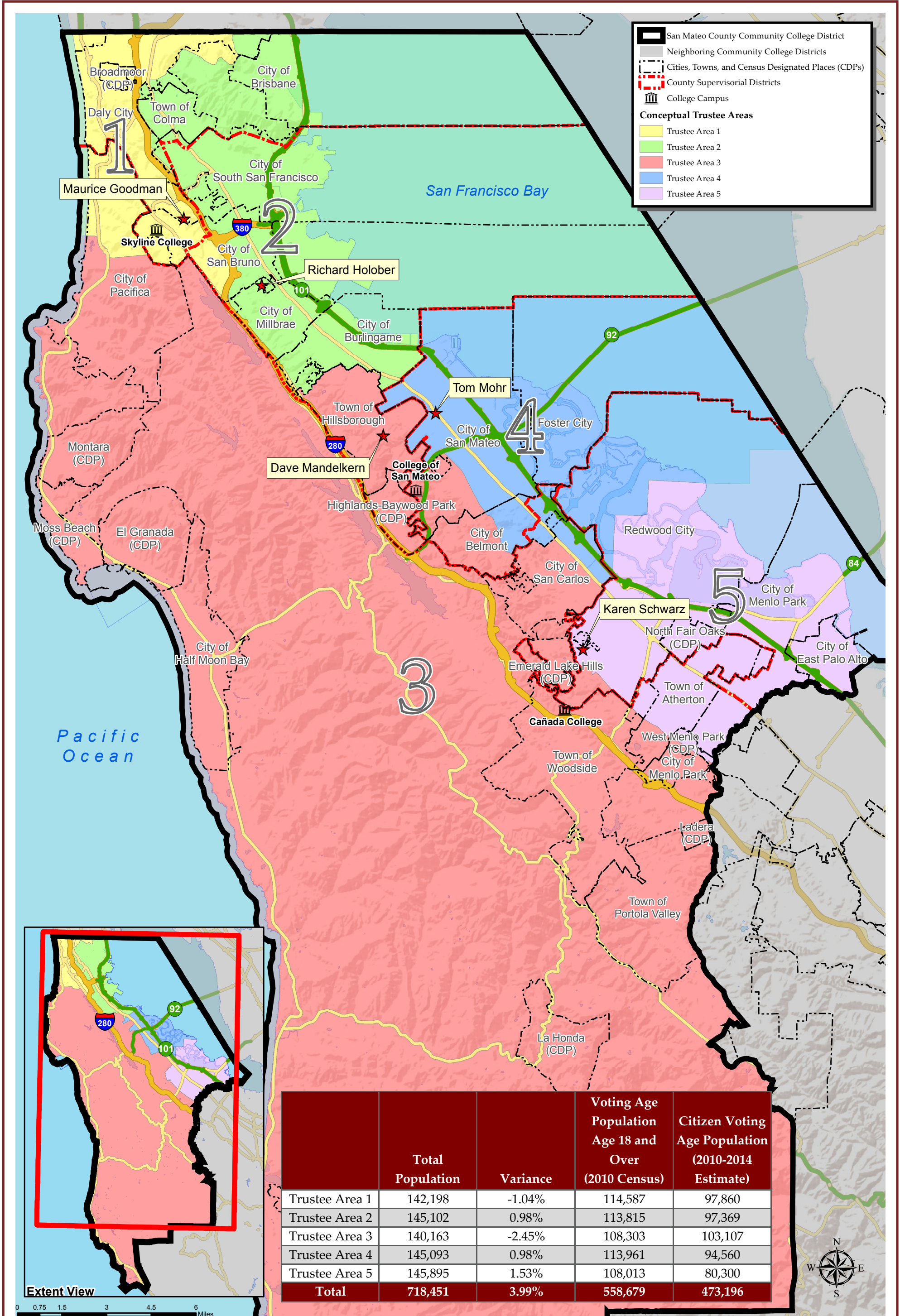


SAN MATEO COUNTY COMMUNITY COLLEGE DISTRICT CONCEPTUAL TRUSTEE AREAS - SCENARIO 1



	Total Population	Variance	Voting Age Population Age 18 and Over (2010 Census)	Citizen Voting Age Population (2010-2014 Estimate)
Trustee Area 1	142,198	-1.04%	114,587	97,860
Trustee Area 2	145,102	0.98%	113,815	97,369
Trustee Area 3	140,163	-2.45%	108,303	103,107
Trustee Area 4	145,093	0.98%	113,961	94,560
Trustee Area 5	145,895	1.53%	108,013	80,300
Total	718,451	3.99%	558,679	473,196

San Mateo County Community College District

Conceptual Trustee Areas - Scenario 1

Total Population

	Trustee Area 1	Trustee Area 2	Trustee Area 3	Trustee Area 4	Trustee Area 5	Variance
Population	142,198	145,102	140,163	145,093	145,895	
Population Variance	-1,492	1,412	-3,527	1,403	2,205	
	-1.04%	0.98%	-2.45%	0.98%	1.53%	3.99%
Hispanic/Latino	28,953	41,467	17,707	30,014	64,361	
	20.36%	28.58%	12.63%	20.69%	44.11%	
White	30,087	51,383	98,437	66,917	56,785	
	21.16%	35.41%	70.23%	46.12%	38.92%	
Black/ African American	4,502	2,519	1,068	3,027	7,647	
	3.17%	1.74%	0.76%	2.09%	5.24%	
American Indian/ Alaska Native	215	245	225	185	255	
	0.15%	0.17%	0.16%	0.13%	0.17%	
Asian	71,766	41,578	16,826	36,655	9,109	
	50.47%	28.65%	12.00%	25.26%	6.24%	
Native Hawaiian/ Other Pacific Islander	1,330	2,462	390	2,222	3,480	
	0.94%	1.70%	0.28%	1.53%	2.39%	
Other	683	688	415	535	388	
	0.48%	0.47%	0.30%	0.37%	0.27%	
Two or More Races	4,662	4,760	5,095	5,538	3,870	
	3.28%	3.28%	3.64%	3.82%	2.65%	

Citizens by Voting Age Population Estimate (2010-2014)

	Trustee Area 1	Trustee Area 2	Trustee Area 3	Trustee Area 4	Trustee Area 5	Variance
Population	97,860	97,369	103,107	94,560	80,300	
Population Variance	3,221	2,730	8,468	-79	-14,339	
	3.40%	2.88%	8.95%	-0.08%	-15.15%	
Hispanic/Latino	15,704	21,007	10,155	13,212	20,612	
	16.05%	21.57%	9.85%	13.97%	25.67%	
White	23,829	41,602	77,244	53,384	43,539	
	24.35%	42.73%	74.92%	56.46%	54.22%	
Black/ African American	3,799	1,845	984	2,634	5,615	
	3.88%	1.89%	0.95%	2.79%	6.99%	
American Indian/ Alaska Native	234	195	83	167	178	
	0.24%	0.20%	0.08%	0.18%	0.22%	
Asian	50,727	29,176	12,010	21,306	6,743	
	51.84%	29.96%	11.65%	22.53%	8.40%	
Native Hawaiian/ Other Pacific Islander	992	1,401	173	803	1,813	
	1.01%	1.44%	0.17%	0.85%	2.26%	
Other	0	0	0	0	0	
	0.00%	0.00%	0.00%	0.00%	0.00%	
Two or More Races	2,575	2,143	2,458	3,054	1,800	
	2.63%	2.20%	2.38%	3.23%	2.24%	