

Course Learning Outcomes

- Content
 - Scientific Method
 - Plant Terminology
 - Plant and Ecosystem diversity
 - Knowledge of Medicinal and Cultural Uses of Plants
 - Importance of habitat conservation
- Technical
 - Field Craft
 - Using Dichotomous Keys
 - Making detailed observations in the field
 - Lab skills

Instructor Contact

- Barry Thomson
 - thomsonb@smccd.net
 - Telephone : (650) 306 3291/3792
 - www.smccd.net/accounts/thomsonb
- Office: None (18-109 mail box)
- Office Hours MW 12:10 - 1:00pm
 - 17-203
- By Arrangement
 - By email



All About Biedleman and Kozloff



- Excellent photographs and diagrams of species.
- Focus placed upon Bay Area plants
- Keys are detailed and technical
- Does NOT identify plants for you
- You will be frustrated.....

Class Website

- http://www.smccd.edu/accounts/tomisonb/Native_Plants.html
- Downloads
- Plant Spreadsheet template
- Study Questions
- Field Trip Information
- Weblinks - animations, articles, photos etc.

Biol 103 - Native Plants and Wildflowers



Bibliography or Bibliography	

WebAccess

- Weekly assignments
- Posted Monday
- Log in using G#
- 10 points each
- Complete 10 over the semester
- Study Questions from textbook
- Questions from online sources

Study Questions

- Focused reading
- Exam Questions
- Critical Thinking
- Download
 - Lecture Outline and Study QuestionsStudy.pdf
- Print (double sided)
 - Study Groups

Lecture Assessment

- 2 Class midterms
- Multiple Choice
- Fill-in-the blanks
- Written questions
- 50 points (Change Greensheet)
- Cumulative Final 100 points



Fieldtrip Structure and Assessment

- Read over description and directions on website **before** leaving home
- Meet AT site AT 9am
- Take notes and make drawings in Field notebook
- Field Report Instructions and Rubric
- 30 points each x 9

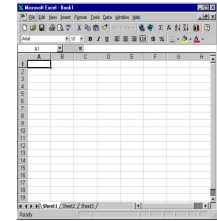


Writing Field Reports

- Detailed report of fieldtrip (15 points)
- List of plants learned at site (5)
- Plant Profile (5)
 - Natural History article on a plant for example
 - Cultural/Medicinal uses
 - Invasive species
 - Food Plant for an endangered butterfly/fly/beetle
- Drawing/ digital photo of plant (2.5)
- Reference Section (2.5)

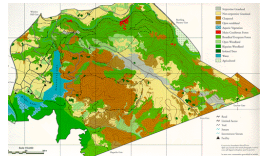
Plant Spreadsheet

- Objective
- Compile a list of all plants observed during field trips
- Helps learn Scientific names and plant families
- Template and instructions on webpage
- 50 points



Field Final

- Identify unknown plants within time limit
- Can use Field Guide AND Field notebook




What if.....

- I am/is sick/ being married /buried on Friday
- No make ups
- 8 out of 9 fieldreports graded or lowest lab dropped
- You will be able to complete Field Report...but it may not be complete



Rain Policy

- If it rains we will get wet
- Come prepared
- Use alternative notebook







Field Trip Safety

- We will be hiking
- If you are sick or injured do NOT attend
- Pay attention to briefing
- Stay on the trails
- Know where your feet are
- Bring water



Late Work and Academic Honesty


- Late Work
 - Reports/ Labs
 - 25% deducted
 - Not accepted within 2 weeks of final
- Plagiarism in Report Writing
 - Copying from textbook
 - Copying and Pasting from internet
- Cheating in Exams
 - Reading from notes
 - Using cell phone
 - Leaving room

* was discovered later that Bush cheated. He signed the treaty "Ohh Chok Teng".

Nobody Cheats...BUT

- Cheating is a consequence of...
 - Poor time management
 - Over commitment
 - Procrastination
 - Fear of Failure
 - Not facing problems



Learning a Foreign Language

- A Hesperidium is formed from the fusion of several carpels.
- Botanical terms are based on Latin roots
- You will need to memorize terminology



Class and College Resources

- Course Webpage
 - Study Guides
 - Dates
 - Assignments
 - Hand outs
 - Scoring Guides
 - Grades



- Learning Center Resources
 - Tutors
- MESA
- Cañada College Library
- On-line databases