

**BUILDING 5 DINING ROOM MODERNIZATION – RFP 076  
CAÑADA COLLEGE  
MANDATORY PRE-BID CONFERENCE**

AUGUST 25, 2011





- **LINDA DA SILVA, EXECUTIVE DIRECTOR, FACILITIES PLANNING DEPARTMENT**
- **BARRY CHIN, DESIGN MANAGER, FACILITIES PLANNING DEPARTMENT**
  
- **PEPPER POWELL, PROJECT COORDINATOR - BIDDING**
- **STEVE OPSON, PROJECT COORDINATOR - TECHNICAL**
  
- **JOSÉ NUÑEZ, VICE CHANCELLOR OF FACILITIES**
- **DANNY GLASS, FACILITIES OPERATIONS MANAGER, CAÑADA COLLEGE**
- **JOZSEF VERES CHIEF ENGINEER, CAÑADA COLLEGE**
  
- **ELIZABETH WITT, PROJECT ARCHITECT, BCA ARCHITECTS**
- **NIK SERNANDE, ARCHITECT, BCA ARCHITECTS**
  
- **LINDA RIZZOLI, SWINERTON MANAGEMENT & CONSULTING  
(CONSTRUCTION MANAGER)**
  
- **CIS INC. (INSPECTOR OF RECORD)**



# MEET THE TEAM



- **WELCOME AND INTRODUCTIONS**
- **PREBID CONFERENCE ADMINISTRATION**
- **BID & CONTRACT AWARD SCHEDULE**
- **PROJECT OVERVIEW**
- **WORK SEQUENCE**
- **OCCUPIED CAMPUS COORDINATION REQUIREMENTS**
- **BID & CONTRACT DOCUMENTS**
- **QUESTION & ANSWER**



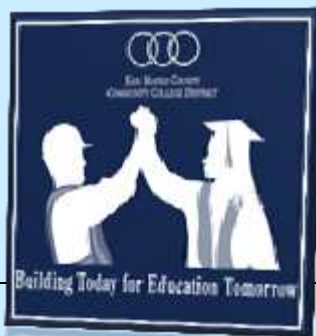
# AGENDA



- **MANDATORY CONFERENCE** (ATTENDANCE IS REQUIRED FOR PRIME BIDDERS):
  - **AUGUST 25, 2011 2:30 PM**
  - **PLEASE SIGN IN**
- **PREBID CONFERENCE ATTENDANCE RECEIPT**



**PREBID CONFERENCE ADMINISTRATION**



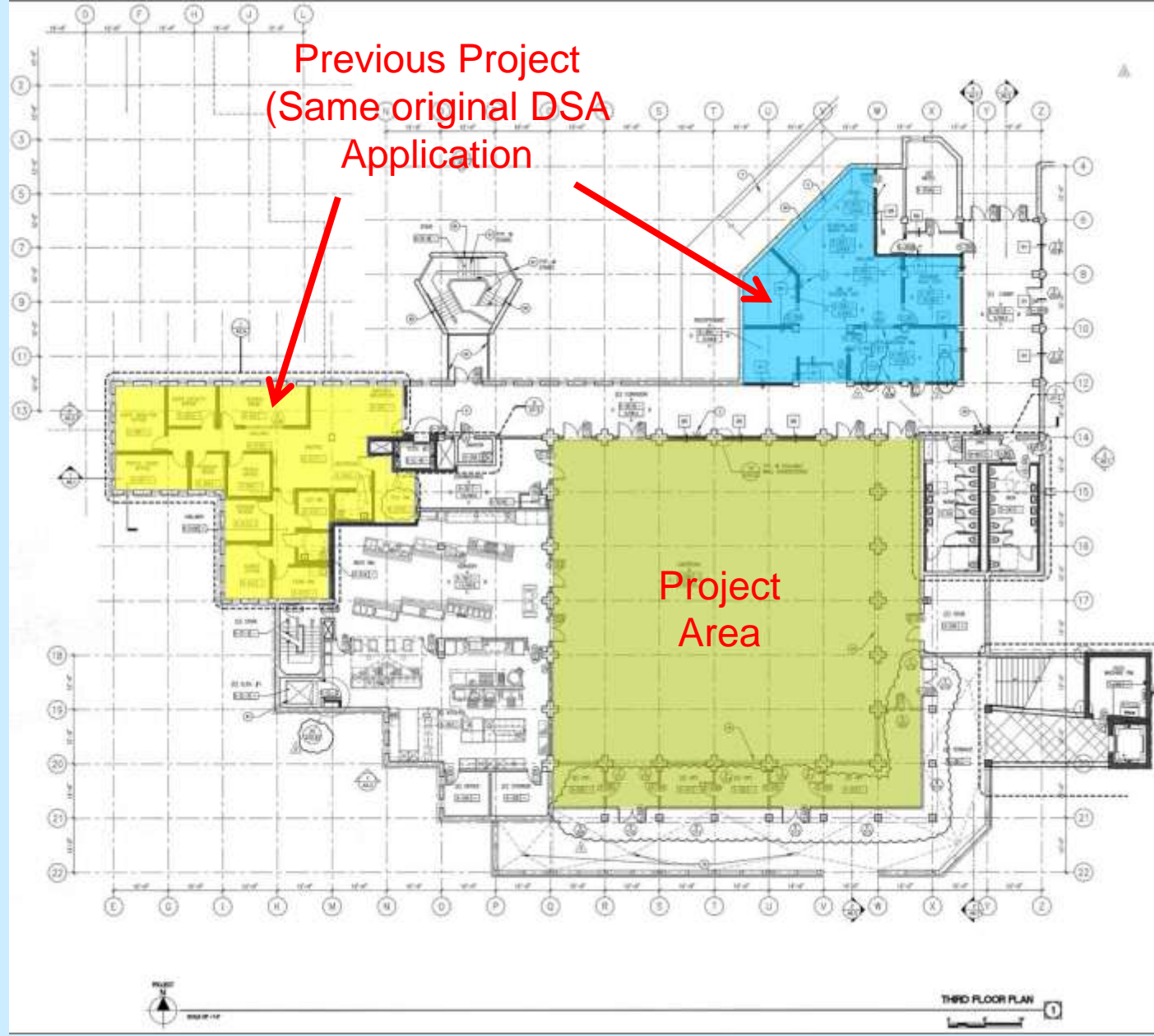
- MANDATORY PREBID CONFERENCE: THURSDAY, AUGUST 25, 2011
- PLANS AVAILABLE: SEPTEMBER 8, 2011
- LAST DAY FOR WRITTEN RFI'S: FRIDAY, SEPTEMBER 23, 2011
- LAST DAY THAT ADDENDA WILL BE ISSUED: WEDNESDAY, SEPTEMBER 28, 2011
- BIDS DUE @ CSM BUILDING 12: OCTOBER 4 @ 2:00 P.M.
- SMCCCD BOARD OF TRUSTEES MEETING (ANTICIPATED CONTRACT APPROVAL): OCTOBER 26, 2011
- ANTICIPATED SUBSTANTIAL COMPLETION: APRIL 6, 2012

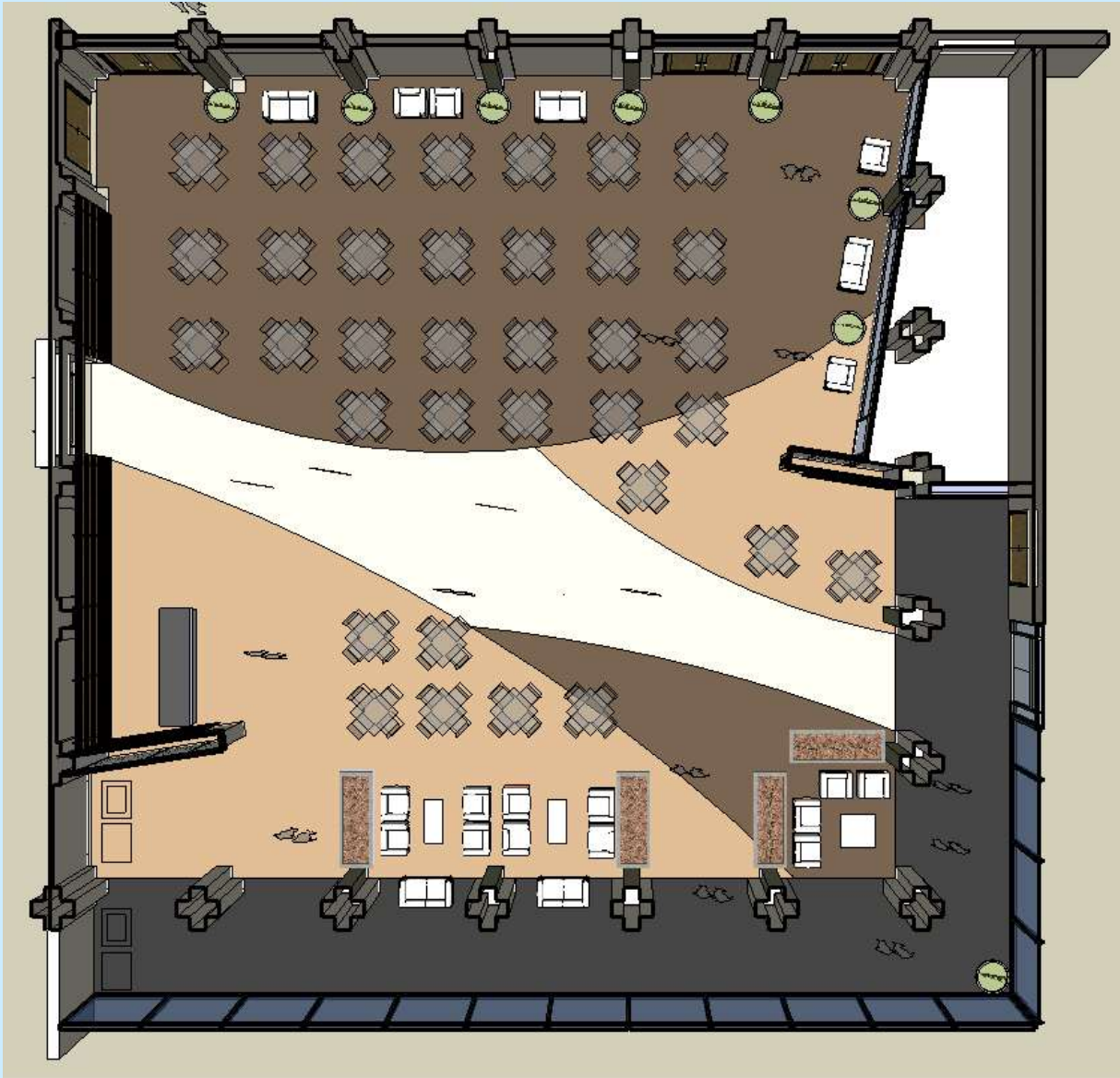


## BID & CONTRACT AWARD SCHEDULE MAJOR MILESTONES



Previous Project  
(Same original DSA  
Application)

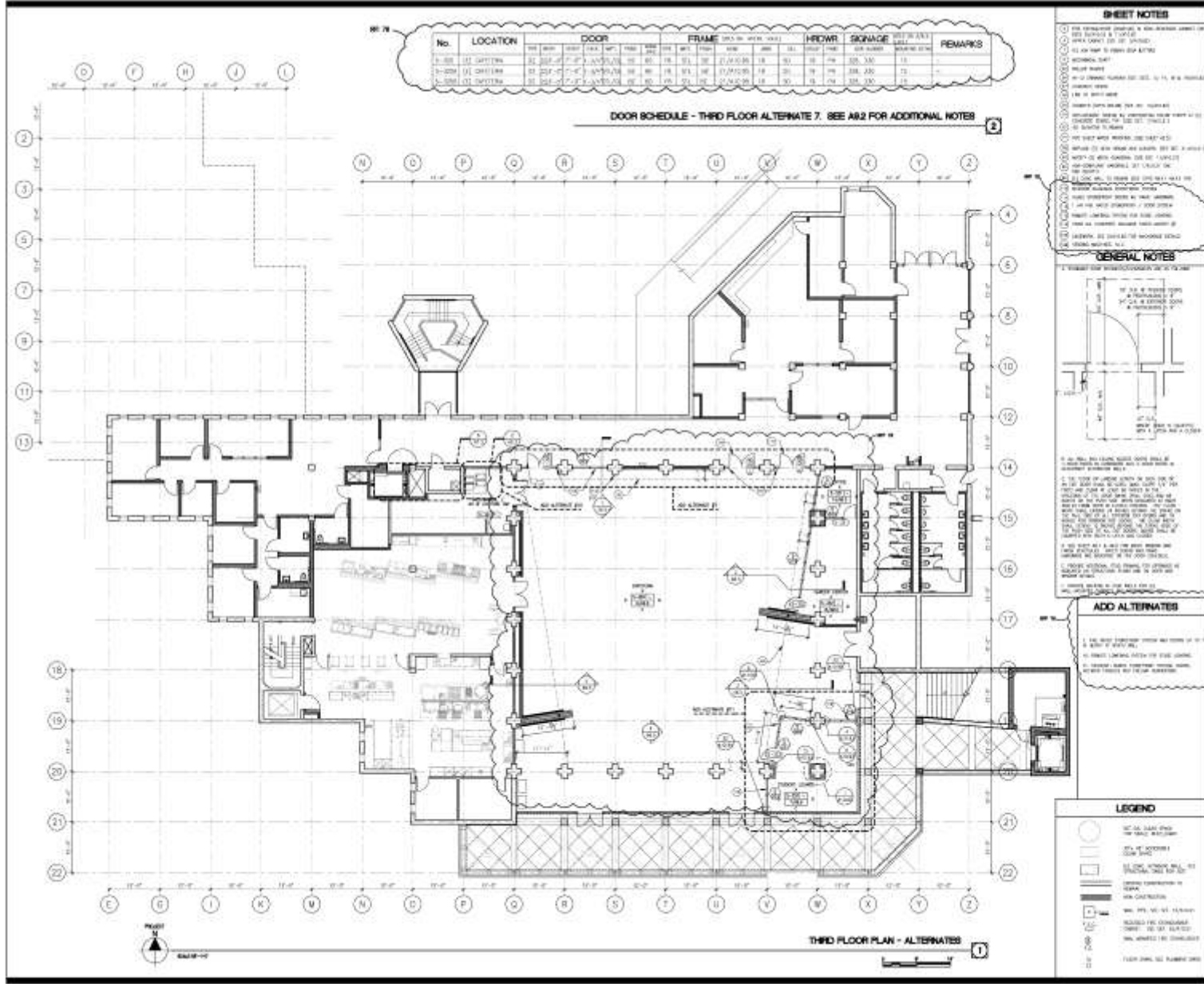












**BCA**  
architecture  
planning  
interiors

Buick Clifford Associates, Inc.  
240 Piedmont Ave.  
Camarillo, California 94601  
(714) 836-6600  
(714) 836-6600  
www.BCAArch.com

**GENERAL NOTES**

1. THESE ALTERNATES ARE FOR INFORMATION ONLY AND ARE NOT TO BE USED FOR CONSTRUCTION.
2. THESE ALTERNATES ARE SUBJECT TO THE APPROVAL OF THE ARCHITECT AND THE CLIENT.
3. THESE ALTERNATES ARE SUBJECT TO THE APPROVAL OF THE ARCHITECT AND THE CLIENT.
4. THESE ALTERNATES ARE SUBJECT TO THE APPROVAL OF THE ARCHITECT AND THE CLIENT.
5. THESE ALTERNATES ARE SUBJECT TO THE APPROVAL OF THE ARCHITECT AND THE CLIENT.

**LEGEND**

- 1. 1/2" DIA. CIRCULAR SIGN - SEE DOOR SCHEDULE
- 2. 1/2" DIA. SQUARE SIGN - SEE DOOR SCHEDULE
- 3. 1/2" DIA. TRIANGULAR SIGN - SEE DOOR SCHEDULE
- 4. 1/2" DIA. DIAGONAL SIGN - SEE DOOR SCHEDULE
- 5. 1/2" DIA. STAR SIGN - SEE DOOR SCHEDULE
- 6. 1/2" DIA. CROSS SIGN - SEE DOOR SCHEDULE
- 7. 1/2" DIA. PLUS SIGN - SEE DOOR SCHEDULE
- 8. 1/2" DIA. MINUS SIGN - SEE DOOR SCHEDULE
- 9. 1/2" DIA. DIVISION SIGN - SEE DOOR SCHEDULE
- 10. 1/2" DIA. MULTIPLICATION SIGN - SEE DOOR SCHEDULE
- 11. 1/2" DIA. PERCENT SIGN - SEE DOOR SCHEDULE
- 12. 1/2" DIA. EQUAL SIGN - SEE DOOR SCHEDULE
- 13. 1/2" DIA. NOT SIGN - SEE DOOR SCHEDULE
- 14. 1/2" DIA. ALL SIGN - SEE DOOR SCHEDULE
- 15. 1/2" DIA. SOME SIGN - SEE DOOR SCHEDULE
- 16. 1/2" DIA. EITHER OR SIGN - SEE DOOR SCHEDULE
- 17. 1/2" DIA. NEITHER NOR SIGN - SEE DOOR SCHEDULE
- 18. 1/2" DIA. BOTH AND SIGN - SEE DOOR SCHEDULE
- 19. 1/2" DIA. EITHER OR AND SIGN - SEE DOOR SCHEDULE
- 20. 1/2" DIA. NEITHER NOR AND SIGN - SEE DOOR SCHEDULE
- 21. 1/2" DIA. BOTH AND AND SIGN - SEE DOOR SCHEDULE
- 22. 1/2" DIA. EITHER OR AND AND SIGN - SEE DOOR SCHEDULE
- 23. 1/2" DIA. NEITHER NOR AND AND SIGN - SEE DOOR SCHEDULE
- 24. 1/2" DIA. BOTH AND AND AND SIGN - SEE DOOR SCHEDULE
- 25. 1/2" DIA. EITHER OR AND AND AND SIGN - SEE DOOR SCHEDULE
- 26. 1/2" DIA. NEITHER NOR AND AND AND SIGN - SEE DOOR SCHEDULE
- 27. 1/2" DIA. BOTH AND AND AND AND SIGN - SEE DOOR SCHEDULE
- 28. 1/2" DIA. EITHER OR AND AND AND AND SIGN - SEE DOOR SCHEDULE
- 29. 1/2" DIA. NEITHER NOR AND AND AND AND SIGN - SEE DOOR SCHEDULE
- 30. 1/2" DIA. BOTH AND AND AND AND AND SIGN - SEE DOOR SCHEDULE

**ADD ALTERNATES**

1. SEE DOOR SCHEDULE FOR ADDITIONAL NOTES.

2. SEE DOOR SCHEDULE FOR ADDITIONAL NOTES.

3. SEE DOOR SCHEDULE FOR ADDITIONAL NOTES.

4. SEE DOOR SCHEDULE FOR ADDITIONAL NOTES.

5. SEE DOOR SCHEDULE FOR ADDITIONAL NOTES.

**BUILDINGS 5 & 6 RENOVATIONS**

San Mateo County Community College District

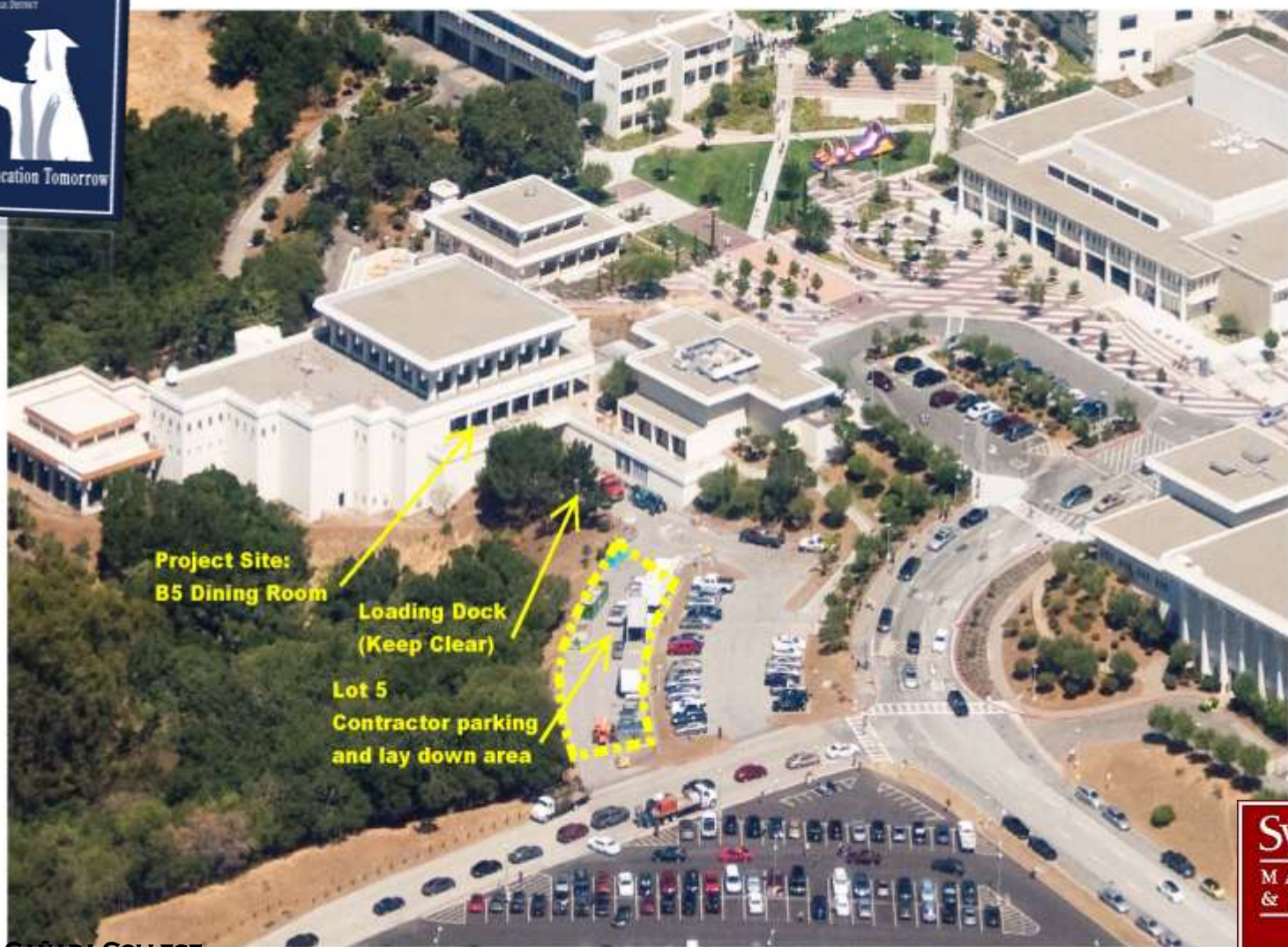
**CAÑADA COLLEGE**  
4200 Farm Hill Boulevard  
Redwood City, CA 94061

**THIRD FLOOR PLAN - ADD ALTERNATES**

Scale: 1/8" = 1'-0"

Project Number: A2.6R





**CANADA COLLEGE  
SAN MATEO COUNTY COMMUNITY COLLEGE DISTRICT  
4200 FARM HILL BLVD.  
REDWOOD CITY, CA 94061**



# CAÑADA COLLEGE OVERVIEW





# CONCURRENT CONSTRUCTION ALERT AND EVENTS

## FINALS:

DECEMBER 12, 2011 TO DECEMBER 17, 2011

## CAMPUS POWER DOWN:

DECEMBER 19, 2011 TO JANUARY 2, 2012





- ***CAÑADA COLLEGE IS AN OCCUPIED CAMPUS***
- ***COLLEGE EDUCATIONAL MISSION IS PARAMOUNT***
- ***CONSTRUCTION LOGISTICS MUST ACCOMMODATE THE COLLEGE'S SCHEDULE, EVENTS AND PRIORITIES***

- **COMMUNICATION WITH CONSTRUCTION MANAGER**
- **WEEKLY OWNER/ARCHITECT/CONTRACTOR MEETING**
- **CONCURRENT PROJECT COORDINATION**
  - **PROTECT EXISTING UTILITIES**
  - **STUDY AS-BUILTS**
  - **FIELD REVIEW WITH CHIEF ENGINEER**
- **ADVANCE NOTICE – UTILITY SHUTDOWNS/ACCESS INTERRUPTIONS**
- **SIGNAGE – TRAFFIC CONTROL/PEDESTRIAN RE-DIRECT**
- **CONTRACTOR PARKING – PARKING LOT 5, WEST ROW**
- **STAGING AND LAYDOWN AREAS – PARKING LOT 5, WEST ROW**
- **SAFETY –**
  - LOCAL WORK AREA ENCLOSURE FENCING**
  - SITE SAFETY SIGNAGE**
  - GC POINT OF CONTACT ON SITE – AT ALL TIMES**



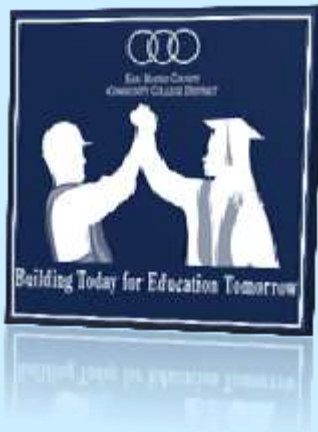
# OCCUPIED CAMPUS LOGISTICS



- Project documents are available at ARC NorCal (formerly Elite Reprographics) for a fee
  - (415)957-1234 or <http://www.eliterepro.com/>
- Also available at the District project website at:
- <http://www.smccd.edu/accounts/smccd/departments/facilities/CanDiningRoom.shtml>
- Bay Area Plan rooms



# BID DOCUMENTS



*THANK YOU*  
FOR YOUR INTEREST  
IN OUR  
CAPITAL IMPROVEMENT  
PROGRAM!

[HTTP://WWW.SMCCD.EDU/ACCOUNTS/SMCCD/DEPARTMENTS/FACILITIES/](http://www.smccd.edu/accounts/smccd/departments/facilities/)



QUESTIONS & ANSWERS

