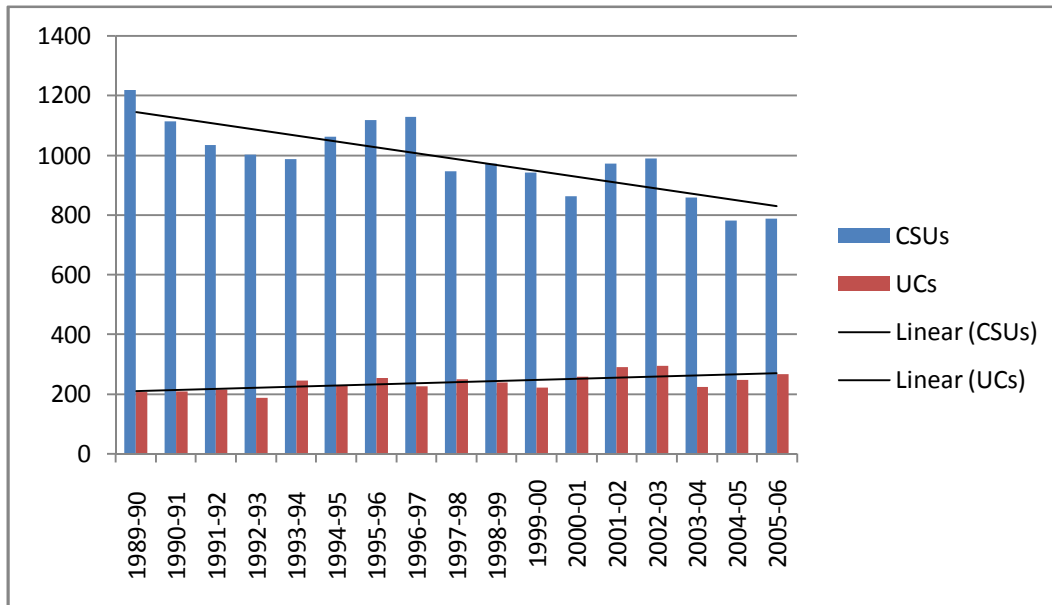


SMCCCD Transfer to CSU/US (1989 - 2006)



YEAR	Total CSU UC	CSUs	UCs
1989-90	1,428	1,219	209
1990-91	1,325	1,114	211
1991-92	1,252	1,035	217
1992-93	1,193	1,004	189
1993-94	1,234	988	246
1994-95	1,294	1,064	230
1995-96	1,374	1,119	255
1996-97	1,357	1,129	228
1997-98	1,199	948	251
1998-99	1,215	974	241
1999-00	1,168	944	224
2000-01	1,123	864	259
2001-02	1,266	974	292
2002-03	1,285	990	295
2003-04	1,085	860	225
2004-05	1,030	782	248
2005-06	1,057	788	269

Source: CSM Research Office. File name: DistrictCollegeEnrollmentAndTransferHistory.xls