



2006




# Scholar Athlete

## Learning Community Outcomes Report

Prepared by:

Office of Planning, Research & Institutional Effectiveness



# Section Contents



Term Enrollment by Course

Term Enrollment by Demographic

Overall Success and Retention

Success and Retention by Subject

Grade Distribution by Subject



**Scholar Athlete Enrollment by Course: 2003/04 - 2005/06**  
**Unduplicated Head Count**

<u>Term Desc</u>	<u>Crn</u>	<u>Subject Code</u>	<u>Section</u>	<u>Course Title</u>	<u>Counts</u>
Fall 2003	80243	CRER	650AC	Athletes Seminar	13
	<b>Total</b>				<b>13</b>
Spring 2004	39392	CRER	650JA	Athletes Seminar	19
	<b>Total</b>				<b>19</b>
Fall 2004	80243	CRER	650JD	Athletes Seminar	30
	<b>Total</b>				<b>30</b>
Fall 2005	80243	CRER	650AE	Athletes Seminar	38
	90075	ENGL	846AE	Reading & Writing Connection	33
	<b>Total</b>				<b>71</b>
Spring 2006	39900	ENGL	100AS	Composition	32
	<b>Total</b>				<b>32</b>

Source: SMCCD Data Warehouse

**Scholar Athlete Demographics  
2003/04 - 2005/06**

<b>Gender</b>	<b>Fall 2003</b>		<b>Fall 2004</b>		<b>Fall 2005</b>		<b>Sum 03-05 and % Change 04-05</b>	
	<b>Female</b>	1	8%	3	10%	19	32%	23
<b>Male</b>	12	92%	27	90%	38	64%	77	41%
<b>Unreported</b>					2	3%	2	
<b>Total</b>	13	100%	30	100%	59	100%	102	97%

	<b>Spring 2004</b>		<b>Spring 2006</b>		<b>Sum 04-06 and % Change 05-06</b>	
	<b>Female</b>			8	25%	8
<b>Male</b>	19	100%	23	72%	42	21%
<b>Unreported</b>			1	3%	1	
<b>Total</b>	19	100%	32	100%	51	68%

<b>Age</b>	<b>Fall 2003</b>		<b>Fall 2004</b>		<b>Fall 2005</b>		<b>Sum 03-05 and % Change 04-05</b>	
	<b>Under 18</b>					2	3%	2
<b>Age 18-22</b>	11	85%	26	87%	54	92%	91	108%
<b>Age 23-28</b>	2	15%	3	10%	1	2%	6	-67%
<b>Age 29-39</b>			1	3%	2	3%	3	100%
<b>Total</b>	13	100%	30	100%	59	100%	102	97%

	<b>Spring 2004</b>		<b>Spring 2006</b>		<b>Sum 04-06 and % Change 05-06</b>	
	<b>Under 18</b>			1	3%	1
<b>Age 18-22</b>	18	95%	27	84%	45	50%
<b>Age 23-28</b>			3	9%	3	
<b>Age 29-39</b>	1	5%			1	-100%
<b>Age 40-49</b>			1	3%	1	
<b>Total</b>	19	100%	32	100%	51	68%

<b>Ethnicity</b>	<b>Fall 2003</b>		<b>Fall 2004</b>		<b>Fall 2005</b>		<b>Sum 03-05 and % Change 04-05</b>	
	<b>African American</b>	3	23%	4	13%	8	14%	15
<b>Asian</b>			1	3%	3	5%	4	200%
<b>Filipino</b>			1	3%	2	3%	3	100%
<b>Hispanic</b>	6	46%	7	23%	20	34%	33	186%
<b>Native American</b>					2	3%	2	
<b>White</b>	3	23%	16	53%	20	34%	39	25%
<b>Other</b>	1	8%	1	3%	1	2%	3	0%
<b>Unreported</b>					3	5%	3	
<b>Total</b>	13	100%	30	100%	59	100%	102	97%

	<b>Spring 2004</b>		<b>Spring 2006</b>		<b>Sum 04-06 and % Change 05-06</b>	
	<b>African American</b>	10	53%	7	22%	17
<b>Asian</b>			2	6%	2	
<b>Filipino</b>			1	3%	1	
<b>Hispanic</b>	4	21%	8	25%	12	100%
<b>Native American</b>			1	3%	1	
<b>White</b>	1	5%	11	34%	12	1000%
<b>Other</b>	2	11%			2	-100%
<b>Unreported</b>	2	11%	2	6%	4	0%
<b>Total</b>	19	100%	32	100%	51	68%

Source: SMCCD Data Warehouse

**Scholar Athlete Demographics  
2003/04 - 2005/06**

<b>Enrollment Status</b>	<b>Fall 2003</b>		<b>Fall 2004</b>		<b>Fall 2005</b>		<b>Sum 03-05 and % Change 04-05</b>	
<b>Continuing</b>	5	38%	13	43%	18	31%	36	38%
<b>First-Time</b>	5	38%	4	13%	28	47%	37	600%
<b>First-Time Transfer</b>	3	23%	5	17%	3	5%	11	-40%
<b>Returning</b>			7	23%	9	15%	16	29%
<b>Returning Transfer</b>			1	3%			1	-100%
<b>Tech Prep Student</b>					1	2%	1	
<b>Total</b>	13	100%	30	100%	59	100%	102	97%

	<b>Spring 2004</b>		<b>Spring 2006</b>		<b>Sum 04-06 and % Change 05-06</b>	
<b>Continuing</b>	17	89%	31	97%	48	82%
<b>First-Time</b>	1	5%			1	-100%
<b>First-Time Transfer</b>	1	5%			1	-100%
<b>Tech Prep Student</b>			1	3%	1	
<b>Total</b>	19	100%	32	100%	51	68%

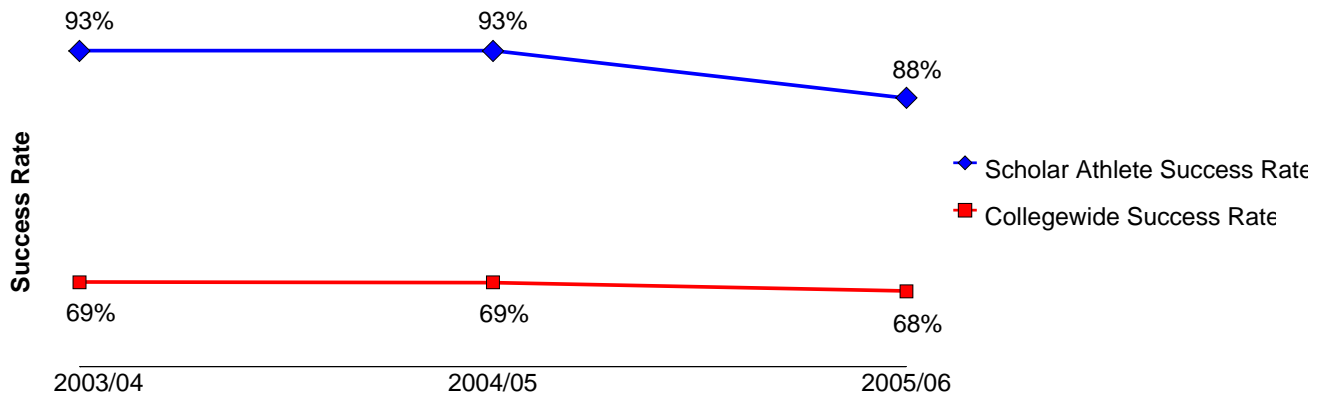
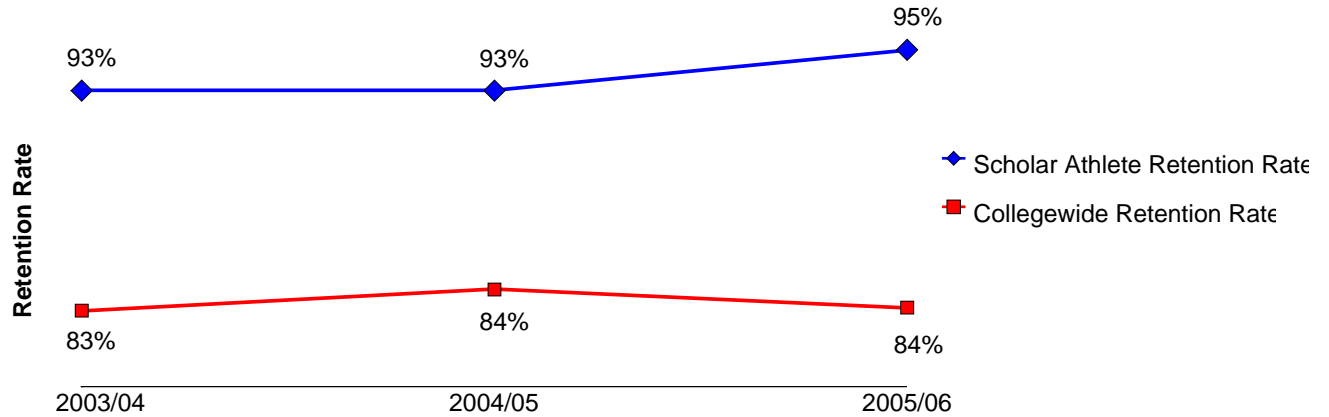
<b>Educational Goal</b>	<b>Fall 2003</b>		<b>Fall 2004</b>		<b>Fall 2005</b>		<b>Sum 03-05 and % Change 04-05</b>	
<b>AA/AS &amp; Transfer</b>	8	62%	14	47%	32	54%	54	129%
<b>AA/AS w/o Transfer</b>	1	8%	3	10%	2	3%	6	-33%
<b>Transfer w/o AA/AS</b>			3	10%	8	14%	11	167%
<b>Acquire Job Skills</b>			1	3%			1	-100%
<b>Educational Development</b>	1	8%			1	2%	2	
<b>Improve Basic Skills</b>					1	2%	1	
<b>Update Job Skills</b>					1	2%	1	
<b>Undecided</b>	3	23%	9	30%	14	24%	26	56%
<b>Total</b>	13	100%	30	100%	59	100%	102	97%

	<b>Spring 2004</b>		<b>Spring 2006</b>		<b>Sum 04-06 and % Change 05-06</b>	
<b>AA/AS &amp; Transfer</b>	16	84%	17	53%	33	6%
<b>AA/AS w/o Transfer</b>	1	5%	1	3%	2	0%
<b>Transfer w/o AA/AS</b>			7	22%	7	
<b>Acquire Job Skills</b>	1	5%			1	-100%
<b>Undecided</b>	1	5%	7	22%	8	600%
<b>Total</b>	19	100%	32	100%	51	68%

Source: SMCCD Data Warehouse

## Scholar Athlete Overall Success and Retention 2003/04 - 2005/06

	Head Count	Retention Count	Retention Rate	Success Count	Success Rate
2003/04	30	28	93%	28	93%
2004/05	30	28	93%	28	93%
2005/06	103	95%	91	88%	



Source: SMCCD Data Warehouse

Retention Count: Number of students with A,B,C,D,F,CR,NC, I grades.

Retention Rate: The percentage of students who complete a course with a grade of A,B,C,D,F,CR,NC, I out of total enrollments.

Success Count: Number of students with A,B,C,CR grades.

Success Rate: The percentage of students who complete a course with a grade of A,B,C,CR out of total enrollments.

**Scholar Athlete Success and Retention by Subject  
2003/04 - 2005/06**

**Career and Personal Development**

	<b>Head Count</b>	<b>Retention Count</b>	<b>Retention Rate</b>	<b>Success Count</b>	<b>Success Rate</b>
<b>2003/04</b>	30	28	93%	28	93%
<b>2004/05</b>	30	28	93%	28	93%
<b>2005/06</b>	38	36	95%	36	95%

**English**

	<b>Head Count</b>	<b>Retention Count</b>	<b>Retention Rate</b>	<b>Success Count</b>	<b>Success Rate</b>
<b>2003/04</b>					
<b>2004/05</b>					
<b>2005/06</b>	65	62	95%	55	85%

Source: SMCCD Data Warehouse

Retention Count: Number of students with A,B,C,D,F,CR,NC, I grades.

Retention Rate: The percentage of students who complete a course with a grade of A,B,C,D,F,CR,NC, I out of total enrollments.

Success Count: Number of students with A,B,C,CR grades.

Success Rate: The percentage of students who complete a course with a grade of A,B,C,CR out of total enrollments.