



2006




Honors Transfer

Learning Community Outcomes Report

Prepared by:

Office of Planning, Research & Institutional Effectiveness



Section Contents



Term Enrollment by Course

Term Enrollment by Demographic

Overall Success and Retention

Success and Retention by Subject

Grade Distribution by Subject



**Honors Transfer Program Enrollment by Course: 2003/04 - 2005/06
Unduplicated Head Count**

<u>Term Desc</u>	<u>Crn</u>	<u>Subject Code</u>	<u>Section</u>	<u>Course Title</u>	<u>Counts</u>
Fall 2003	80772	SPAN	130AA	Intermediate Spanish - Honors	4
	83877	ENGL	100AH	Composition - HONORS	26
	84374	ENGL	110JH	Comp, Lit. & Crit. Think Honor	11
	84877	ENGL	165AH	Crit. Think & Adv. Com -Honors	23
	88767	HIST	101AH	History Western Civ II -Honors	24
	88784	PSYC	100AH	General Psychology - Honors	29
	89249	MATH	251AH	Calc./Analytic Geom. I-Honors	11
	89298	BIOL	675AH	Honors Colloq. in Biology	15
	89310	CRER	650AH	Honors Seminar	23
	89586	PHYS	210AH	General Physics I-Honors	15
	89587	PHYS	211JH	General Phys I Calc Sup-Honors	5
	89640	MATH	241AH	Applied Calculus I-Honors	4
	89694	PSYC	690AH	Special Projects - Honors	1
	Total				191
Spring 2004	30296	ENGL	100AH	Composition - Honors	28
	30316	ENGL	110AH	Comp, Lit, Critical - Honors	19
	30685	PHIL	100JH	Intro to Philosophy - HONORS	21
	30760	SPAN	110AH	Elementary Spanish -Honors	24
	35380	MATH	251AH	Calc/Anal. Geom - Honors	1
	36562	SPCH	150AH	Communicate Across Cltrs-Honor	21
	37695	MUS.	202AH	Music Appreciation- Honors	20
	38083	PSYC	300AH	Social Psychology - hONORS	25
	38700	HIST	240AH	Ethnic Groups in CA - Honors	24
	38736	BIOL	675AH	Honors Colloq. in Biology	18
	38783	CRER	650AH	Honors Seminar	13
	38836	GEOL	210AH	General Geology - Honors	4
	39196	MATH	242AH	Applied Calculus II - Honors	9
	39363	PHYS	220AH	General Physics II - Honors	6
	Total				233
Fall 2004	80765	SPAN	110AH	Elementary Spanish -Honors	13
	83877	ENGL	100AH	Composition - HONORS	21
	84877	ENGL	165AH	Crit. Think & Adv. Com -Honors	16
	89249	MATH	251AH	Calc./Analytic Geom. I-Honors	20
	89298	BIOL	675AH	Honors Colloq. in Biology	20
	89310	CRER	650AH	Honors Seminar	17
	89866	SPCH	100AH	Fundamentals of Speech-Honors	27
	89867	ART	102AH	History of Art II - Honors	15
	89879	MATH	200AH	Probability&Statistics-Honors	6
	89882	PHYS	270AH	Physics with Calc. III-Honors	7
	89884	ECON	100AH	Macro Economics - Honors	27
	89887	ANTH	110AH	Cultural Anthropology - Honors	26
	89902	HIST	201JH	United States History I-HONORS	26
	Total				241

Source: SMCCD Data Warehouse

Note: Counts exclude honors students enrolled in non-honors-specific courses. Low enrolled honors sections were offered in conjunction with a regular section of the same course.

**Honors Transfer Program Enrollment by Course: 2003/04 - 2005/06
Unduplicated Head Count**

<u>Term Desc</u>	<u>Crn</u>	<u>Subject Code</u>	<u>Section</u>	<u>Course Title</u>	<u>Counts</u>
Spring 2005	30296	ENGL	100AH	Composition - Honors	19
	30316	ENGL	110AH	Comp, Lit, Critical - Honors	23
	30708	PSYC	100AH	General Psychology - Honors	21
	30760	SPAN	120AH	Elementary Spanish -Honors	9
	35380	MATH	251AH	Calc/Anal. Geom - Honors	12
	37695	MUS.	202AH	Music Appreciation- Honors	15
	38700	HIST	240AH	Ethnic Groups in CA - Honors	22
	38736	BIOL	675AH	Honors Colloq. in Biology	21
	38836	GEOL	210AH	General Geology - Honors	5
	39196	MATH	242AH	Applied Calculus II - Honors	8
	39363	PHYS	220AH	General Physics II - Honors	5
	39585	MATH	200AH	Elem Probability&Stats-Honors	9
	39587	PHYS	221AH	Gen Phys II Calc Suplm-Honors	3
	39717	ENGL	100JH	Composition - Honors	7
		Total			
Fall 2005	80028	ART	105AH	Art of Asia/ Near East-Honors	28
	80765	SPAN	110AH	Elementary Spanish -Honors	2
	83877	ENGL	100AH	Composition - HONORS	28
	84324	HIST	240JH	Hist-Ethnic Groups of CA-Hon	25
	84877	ENGL	165AH	Crit. Think & Adv. Com -Honors	10
	88767	HIST	101AH	History Western Civ II -Honors	12
	88786	PHIL	100AH	Intro to Philosophy-Honors	22
	89112	ENGL	100JH	Composition - Honors	14
	89249	MATH	251AH	Calc./Analytic Geom. I-Honors	16
	89298	BIOL	675AH	Honors Colloq. in Biology	16
	89310	CRER	650AH	Honors Seminar	15
	89577	ANTH	125AH	Physical Anthropology - Honors	15
	89879	MATH	200AH	Probability&Statistics-Honors	11
	89882	PHYS	270AH	Physics with Calc. III-Honors	7
	89884	ECON	100AH	Macro Economics - Honors	23
	90081	GEOL	210AH	General Geology - Honors	6
	90082	SPCH	127AH	Argumentation Honors	21
	90085	MATH	252AH	Calculus/Analy Geom II-Honors	9
	90142	PHIL	680AH	Intro-ScientificReason.-Honors	5
	90158	PHIL	680BH	Greek Myth,Fable&Legend-Honors	15
	Total				300

Source: SMCCD Data Warehouse

Note: Counts exclude honors students enrolled in non-honors-specific courses. Low enrolled honors sections were offered in conjunction with a regular section of the same course.

**Honors Transfer Program Enrollment by Course: 2003/04 - 2005/06
Unduplicated Head Count**

<u>Term Desc</u>	<u>Crn</u>	<u>Subject Code</u>	<u>Section</u>	<u>Course Title</u>	<u>Counts</u>	
Spring 2006	30296	ENGL	100AH	Composition - Honors	19	
	30316	ENGL	110AH	Comp, Lit, Critical - Honors	21	
	30760	SPAN	120AH	Elementary Spanish -Honors	8	
	35380	MATH	251AH	Calc/Anal. Geom - Honors	1	
	35545	PHIL	300AH	Intro to World Religions-Honor	26	
	37695	MUS.	202AH	Music Appreciation- Honors	9	
	38736	BIOL	675AH	Honors Colloq. in Biology	11	
	38836	GEOL	210AH	General Geology - Honors	9	
	39196	MATH	242AH	Applied Calculus II - Honors	6	
	39585	MATH	200AH	Elem Probability&Stats-Honors	5	
	39933	SPCH	100AH	Fundamentals of Speech - Honor	12	
	39967	ENGL	110JH	Comp, Lit, Crit Think - Honor	4	
	40030	CHEM	220AH	General Chemistry II - Honors	6	
	40032	PSYC	200AH	Developmental Psychology-Honor	22	
	40049	HIST	201JH	United States History I-Honors	23	
	40050	PHIL	320JH	Asian Philosophy-Honors	11	
	40074	ANTH	110AH	Cultural Anthropology-Honors	15	
	40136	MATH	252AH	Calc/Analytic Geom II - Honors	6	
	Total					214

Source: SMCCD Data Warehouse

Note: Counts exclude honors students enrolled in non-honors-specific courses. Low enrolled honors sections were offered in conjunction with a regular section of the same course.

**Honors Transfer Program Demographics
2003/04 - 2005/06**

Gender	Fall 2003		Fall 2004		Fall 2005		Sum 03-05 and % Change 04-05	
	Female	81	58%	85	47%	114	53%	280
Male	58	42%	94	52%	97	45%	249	3%
Unreported			2	1%	5	2%	7	150%
Total	139	100%	181	100%	216	100%	536	19%

	Spring 2004		Spring 2005		Spring 2006		Sum 04-06 and % Change 05-06	
	Female	101	55%	80	56%	105	59%	286
Male	81	45%	62	43%	72	40%	215	16%
Unreported			2	1%	2	1%	4	0%
Total	182	100%	144	100%	179	100%	505	24%

Age	Fall 2003		Fall 2004		Fall 2005		Sum 03-05 and % Change 04-05	
	Under 18	2	1%	5	3%	4	2%	11
Age 18-22	91	65%	126	70%	152	70%	369	21%
Age 23-28	25	18%	26	14%	40	19%	91	54%
Age 29-39	15	11%	17	9%	13	6%	45	-24%
Age 40-49	2	1%	4	2%	4	2%	10	0%
Age 50-59	4	3%	2	1%	2	1%	8	0%
Age 60+			1	1%	1	0%	2	0%
Total	139	100%	181	100%	216	100%	536	19%

	Spring 2004		Spring 2005		Spring 2006		Sum 04-06 and % Change 05-06	
	Under 18	3	2%	3	2%	5	3%	11
Age 18-22	123	68%	105	73%	121	68%	349	15%
Age 23-28	30	16%	21	15%	28	16%	79	33%
Age 29-39	12	7%	9	6%	14	8%	35	56%
Age 40-49	10	5%	4	3%	6	3%	20	50%
Age 50-59	4	2%	1	1%	4	2%	9	300%
Age 60+			1	1%	1	1%	2	0%
Total	182	100%	144	100%	179	100%	505	24%

Ethnicity	Fall 2003		Fall 2004		Fall 2005		Sum 03-05 and % Change 04-05	
	African American	2	1%	6	3%	6	3%	14
Asian	46	33%	55	30%	53	25%	154	-4%
Filipino	20	14%	24	13%	34	16%	78	42%
Hispanic	22	16%	37	20%	34	16%	93	-8%
Native American					2	1%	2	
White	40	29%	49	27%	58	27%	147	18%
Other	4	3%	2	1%	10	5%	16	400%
Unreported	5	4%	8	4%	19	9%	32	138%
Total	139	100%	181	100%	216	100%	536	19%

	Spring 2004		Spring 2005		Spring 2006		Sum 04-06 and % Change 05-06	
	African American	5	3%	4	3%	8	4%	17
Asian	49	27%	44	31%	51	28%	144	16%
Filipino	29	16%	18	13%	22	12%	69	22%
Hispanic	38	21%	32	22%	27	15%	97	-16%
Native American					1	1%	1	
White	50	27%	30	21%	47	26%	127	57%
Other	8	4%	7	5%	10	6%	25	43%
Unreported	3	2%	9	6%	13	7%	25	44%
Total	182	100%	144	100%	179	100%	505	24%

Source: SMCCD Data Warehouse

Note: Counts exclude honors students enrolled in non-honors-specific courses.

**Honors Transfer Program Demographics
2003/04 - 2005/06**

Enrollment Status	Fall 2003		Fall 2004		Fall 2005		Sum 03-05 and % Change 04-05	
Continuing	96	69%	121	67%	144	67%	361	19%
Current K-12			1	1%			1	-100%
First-Time	18	13%	32	18%	39	18%	89	22%
First-Time Transfer	10	7%	16	9%	15	7%	41	-6%
Returning	12	9%	9	5%	13	6%	34	44%
Returning Transfer	3	2%	2	1%	5	2%	10	150%
Total	139	100%	181	100%	216	100%	536	19%

	Spring 2004		Spring 2005		Spring 2006		Sum 04-06 and % Change 05-06	
Continuing	154	85%	125	87%	152	85%	431	22%
Current K-12	1	1%	1	1%	3	2%	5	200%
First-Time	12	7%	7	5%	4	2%	23	-43%
First-Time Transfer	4	2%	6	4%	8	4%	18	33%
Returning	10	5%	5	3%	7	4%	22	40%
Returning Transfer	1	1%			5	3%	6	
Total	182	100%	144	100%	179	100%	505	24%

Educational Goal	Fall 2003		Fall 2004		Fall 2005		Sum 03-05 and % Change 04-05	
AA/AS & Transfer	79	57%	117	65%	137	63%	333	17%
AA/AS w/o Transfer	3	2%	3	2%	9	4%	15	200%
Certificate w/o Transfer					1	0%	1	
Transfer w/o AA/AS	39	28%	45	25%	44	20%	128	-2%
Educational Development	2	1%	9	5%	7	3%	18	-22%
Undecided	16	12%	7	4%	18	8%	41	157%
Total	139	100%	181	100%	216	100%	536	19%

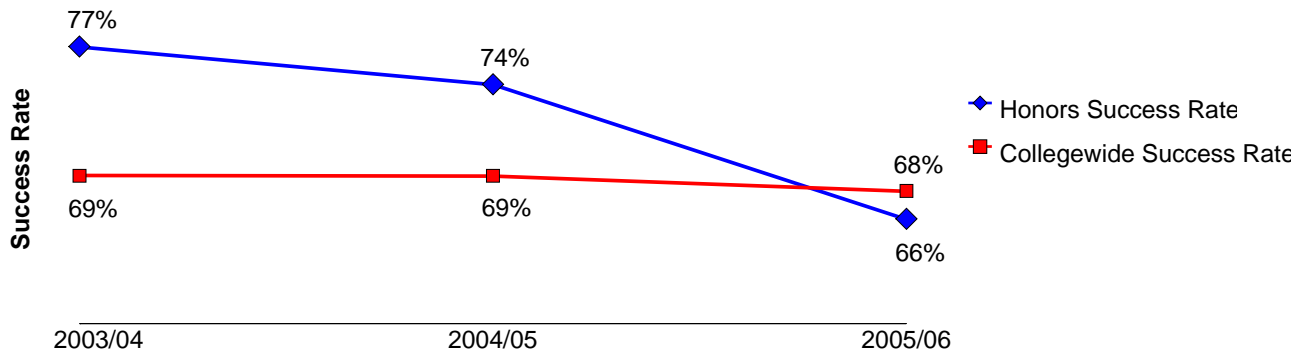
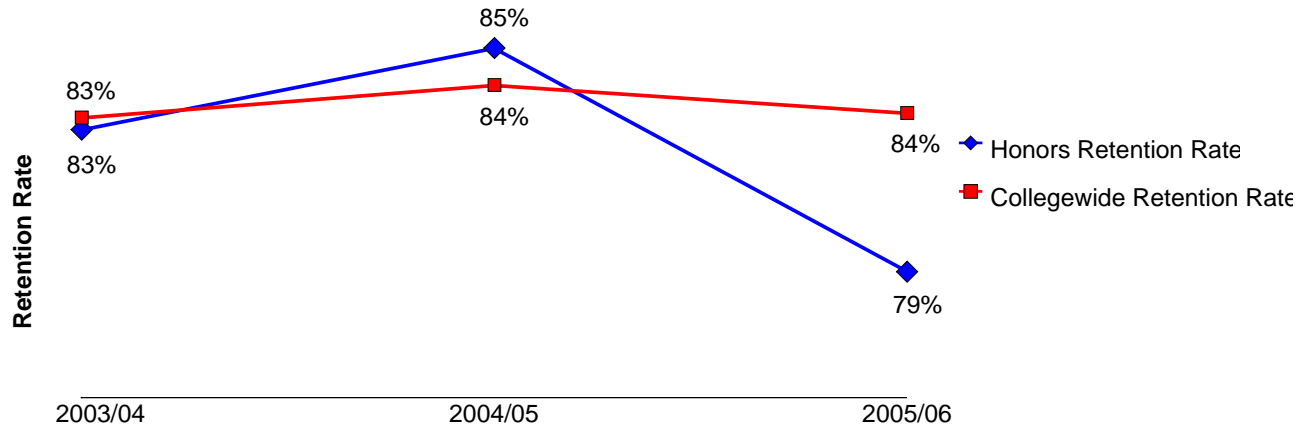
	Spring 2004		Spring 2005		Spring 2006		Sum 04-06 and % Change 05-06	
AA/AS & Transfer	108	59%	91	63%	117	65%	316	29%
AA/AS w/o Transfer	9	5%	4	3%	5	3%	18	25%
Certificate w/o Transfer	1	1%			1	1%	2	
Transfer w/o AA/AS	46	25%	36	25%	41	23%	123	14%
Acquire Job Skills	1	1%			1	1%	2	
Complete HS Credits					1	1%	1	
Educational Development	3	2%	4	3%	3	2%	10	-25%
Update Job Skills	1	1%			1	1%	2	
Undecided	13	7%	9	6%	9	5%	31	0%
Total	182	100%	144	100%	179	100%	505	24%

Source: SMCCD Data Warehouse

Note: Counts exclude honors students enrolled in non-honors-specific courses.

Honors Overall Success and Retention 2003/04 - 2005/06

	Head Count	Retention Count	Retention Rate	Success Count	Success Rate
2003/04	442	367	83%	339	77%
2004/05	434	371	85%	323	74%
2005/06	377	297	79%	250	66%



Source: SMCCD Data Warehouse

Retention Count: Number of students with A,B,C,D,F,CR,NC, I grades.

Retention Rate: The percentage of students who complete a course with a grade of A,B,C,D,F,CR,NC, I out of total enrollments.

Success Count: Number of students with A,B,C,CR grades.

Success Rate: The percentage of students who complete a course with a grade of A,B,C,CR out of total enrollments.

**Honors Success and Retention by Subject
2003/04 - 2005/06**

Anthropology

	Head Count	Retention Count	Retention Rate	Success Count	Success Rate
2003/04	1	1	100%	1	100%
2004/05	26	24	92%	19	73%
2005/06	14	10	71%	7	50%

Art

	Head Count	Retention Count	Retention Rate	Success Count	Success Rate
2003/04					
2004/05	16	14	88%	12	75%
2005/06	28	20	71%	16	57%

Biology

	Head Count	Retention Count	Retention Rate	Success Count	Success Rate
2003/04	60	60	100%	59	98%
2004/05	54	52	96%	51	94%
2005/06	37	33	89%	33	89%

Business

	Head Count	Retention Count	Retention Rate	Success Count	Success Rate
2003/04					
2004/05					
2005/06	1	1	100%	1	100%

Chemistry

	Head Count	Retention Count	Retention Rate	Success Count	Success Rate
2003/04	1	1	100%	1	100%
2004/05					
2005/06					

Career and Personal Development

	Head Count	Retention Count	Retention Rate	Success Count	Success Rate
2003/04	34	31	91%	29	85%
2004/05	16	16	100%	16	100%
2005/06	13	13	100%	13	100%

**Honors Success and Retention by Subject
2003/04 - 2005/06**

Economics

	Head Count	Retention Count	Retention Rate	Success Count	Success Rate
2003/04	1	1	100%	1	100%
2004/05	27	26	96%	22	81%
2005/06	21	17	81%	15	71%

English

	Head Count	Retention Count	Retention Rate	Success Count	Success Rate
2003/04	104	75	72%	65	63%
2004/05	84	70	83%	57	68%
2005/06	86	64	74%	54	63%

Geology

	Head Count	Retention Count	Retention Rate	Success Count	Success Rate
2003/04	4	4	100%	4	100%
2004/05	5	5	100%	5	100%
2005/06	15	15	100%	12	80%

History

	Head Count	Retention Count	Retention Rate	Success Count	Success Rate
2003/04	51	40	78%	38	75%
2004/05	51	38	75%	32	63%
2005/06	34	29	85%	26	76%

Math

	Head Count	Retention Count	Retention Rate	Success Count	Success Rate
2003/04	18	14	78%	13	72%
2004/05	54	44	81%	33	61%
2005/06	45	29	64%	26	58%

Music

	Head Count	Retention Count	Retention Rate	Success Count	Success Rate
2003/04	21	17	81%	15	71%
2004/05	15	10	67%	7	47%
2005/06	9	8	89%	6	67%

**Honors Success and Retention by Subject
2003/04 - 2005/06**

Philosophy

	Head Count	Retention Count	Retention Rate	Success Count	Success Rate
2003/04	19	16	84%	10	53%
2004/05					
2005/06	35	27	77%	19	54%

Physics

	Head Count	Retention Count	Retention Rate	Success Count	Success Rate
2003/04	22	20	91%	20	91%
2004/05	15	14	93%	14	93%
2005/06	7	6	86%	6	86%

Psychology

	Head Count	Retention Count	Retention Rate	Success Count	Success Rate
2003/04	54	47	87%	45	83%
2004/05	21	16	76%	15	71%
2005/06					

Spanish

	Head Count	Retention Count	Retention Rate	Success Count	Success Rate
2003/04	30	21	70%	21	70%
2004/05	23	21	91%	21	91%
2005/06	10	8	80%	8	80%

Speech

	Head Count	Retention Count	Retention Rate	Success Count	Success Rate
2003/04	22	19	86%	17	77%
2004/05	27	21	78%	19	70%
2005/06	22	17	77%	8	36%

Source: SMCCD Data Warehouse

Retention Count: Number of students with A,B,C,D,F,CR,NC, I grades.

Retention Rate: The percentage of students who complete a course with a grade of A,B,C,D,F,CR,NC, I out of total enrollments.

Success Count: Number of students with A,B,C,CR grades.

Success Rate: The percentage of students who complete a course with a grade of A,B,C,CR out of total enrollments.

**Honors Grades by Subject
2003/04 - 2005/06**

Anthropology

		A		B		D		F		I		W	
110AH	2004/05	11	42%	8	31%	1	4%	4	15%			2	8%
	2005/06												
125AA	2003/04	1	100%		0%		0%		0%				0%
	2004/05												
	2005/06												
125AH	2005/06	6	43%	1	7%			2	14%	1	7%	4	29%

Art

		A		B		C		D		F		I		W	
102AA	2003/04														
	2004/05	1	100%		0%		0%		0%		0%				0%
	2005/06														
102AH	2004/05	6	43%	3	21%	1	7%	1	7%			1	7%	2	14%
105AH	2005/06	6	21%	6	21%	4	14%	2	7%	1	4%	1	4%	8	29%
115AX	2003/04														
	2004/05	1	100%		0%		0%		0%		0%		0%		0%
	2005/06														

Biology

		A		B		C		D		F		W	
101AA	2003/04	1	100%		0%		0%		0%		0%		0%
	2004/05												
	2005/06												
110AB	2003/04	1	25%	3	75%		0%		0%		0%		0%
	2004/05		0%	1	100%		0%		0%		0%		0%
	2005/06	1	100%		0%		0%		0%		0%		0%
110AC	2003/04	2	100%		0%		0%		0%		0%		0%
	2004/05	1	100%		0%		0%		0%		0%		0%
	2005/06												
110JA	2003/04		0%		0%	1	100%		0%		0%		0%
	2004/05												
	2005/06												
130AA	2003/04	2	100%		0%		0%		0%		0%		0%
	2004/05												
	2005/06												
130AB	2003/04												
	2004/05												
	2005/06	1	100%		0%		0%		0%		0%		0%
130AS	2004/05	1	100%		0%		0%		0%		0%		0%
140AA	2003/04	1	50%	1	50%		0%		0%		0%		0%
	2004/05												
	2005/06												
150AA	2003/04	1	100%		0%		0%		0%		0%		0%

English

		A		B		C		D		F		I		W	
100AH	2003/04	11	22%	16	31%	4	8%	2	4%	1	2%	1	2%	16	31%
	2004/05	13	33%	5	13%	4	10%	4	10%	1	3%	2	5%	10	26%
	2005/06	19	44%	7	16%	3	7%	2	5%	1	2%	1	2%	10	23%
100JH	2004/05	5	71%									1	14%	1	14%
	2005/06	3	21%	2	14%	1	7%			3	21%			5	36%
110AH	2003/04	2	11%	7	39%	3	17%	1	6%	2	11%	2	11%	1	6%
	2004/05	5	22%	10	43%	2	9%	1	4%	2	9%			3	13%
	2005/06	2	10%	8	40%	3	15%					1	5%	6	30%
110JB	2003/04	1	100%		0%		0%		0%		0%				0%
	2004/05														
	2005/06														
110JH	2003/04	2	22%	1	11%	2	22%							4	44%
	2005/06														
161AX	2003/04														
	2004/05	1	100%		0%		0%		0%		0%				0%
	2005/06														
165AA	2003/04	1	100%		0%		0%		0%		0%				0%
	2004/05														
	2005/06														
165AH	2003/04	7	30%	7	30%					1	4%			8	35%
	2004/05	2	14%	5	36%	5	36%			2	14%				
	2005/06			2	22%	4	44%	2	22%					1	11%
165JA	2003/04	1	100%		0%		0%						0%		0%
	2004/05														
	2005/06														

Geology

		A		B		C		D		F	
210AH	2003/04	3	75%	1	25%						
	2004/05	5	100%								
	2005/06	8	53%	3	20%	1	7%	2	13%	1	7%

Math

		A		B		C		D		F		W	
200AH	2004/05	4	31%	3	23%	3	23%	1	8%			2	15%
	2005/06	3	23%	1	8%	3	23%			1	8%	5	38%
241AH	2003/04	2	100%		0%								
242AH	2003/04	3	38%	1	13%	1	13%			1	13%	2	25%
	2004/05	1	13%	7	88%								
	2005/06	3	50%	2	33%							1	17%
251AH	2003/04	1	13%	5	63%				0%		0%	2	25%
	2004/05	3	9%	6	19%	5	16%	5	16%	5	16%	8	25%
	2005/06	2	12%	4	24%	4	24%			1	6%	6	35%
252AB	2004/05	1	100%		0%		0%		0%		0%		0%
	2005/06												
252AH	2005/06	2	22%	1	11%	1	11%		0%	1	11%	4	44%

Psychology

		A		B		C		D		F		CR		W	
100AH	2003/04	6	21%	12	43%	4	14%							6	21%
	2004/05	7	33%	5	24%	3	14%	1	5%					5	24%
300AH	2003/04	5	20%	8	32%	9	36%	1	4%	1	4%			1	4%
690AH	2003/04											1	100%		

Spanish

		A		B		C		W	
110AA	2003/04	3	100%		0%		0%		0%
	2004/05								
	2005/06								
110AH	2003/04	12	52%	1	4%	1	4%	9	39%
	2004/05	11	85%					2	15%
	2005/06	1	50%					1	50%
120AH	2004/05	7	78%	1	11%	1	11%		
	2005/06	4	50%	3	38%			1	13%
130AA	2003/04	3	75%	1	25%				
	2004/05	1	100%						
	2005/06								

Speech

		A		B		C		D		F		W	
100AC	2003/04												
	2004/05	1	100%		0%		0%		0%				0%
	2005/06												
100AH	2004/05	9	35%	7	27%	2	8%			2	8%	6	23%
	2005/06												
120AD	2003/04	1	100%		0%		0%				0%		0%
	2004/05												
	2005/06												
127AH	2005/06	2	10%	3	14%	2	10%	2	10%	7	33%	5	24%
150AB	2003/04												
	2004/05												
	2005/06	1	100%		0%		0%				0%		0%
150AH	2003/04	11	52%	5	24%					2	10%	3	14%