



2008




Women In Transition

Learning Community Outcomes Report

Prepared by:

Office of Planning, Research & Institutional Effectiveness



Section Contents



Term Enrollment by Course

Term Enrollment by Demographic

Overall Success and Retention

Success and Retention by Subject

Grade Distribution by Subject



**WIT Enrollment by Course: 2003/04 to 2007/08
Unduplicated Head Count**

Term Desc	Crn	Subject Code	Section	Course Title	Counts
Fall 2003	80309	ENGL	100JR	Composition	26
	80544	MATH	111AR	Elementary Algebra I-WIT	39
	80762	SOSC	160AR	Women in Transition Seminar	15
	83161	CRER	137JR	Life and Career Planning WIT	32
	Total				112
Fall 2004	80309	ENGL	100JR	Composition	23
	80544	MATH	111AR	Elementary Algebra I-WIT	44
	80762	SOSC	160AR	Women in Transition Seminar	12
	83161	CRER	137JR	Life and Career Planning WIT	31
	Total				110
Fall 2005	80309	ENGL	100JR	Composition	25
	80541	MATH	111AR	Elementary Algebra I - WIT	38
	80762	SOSC	160AR	Women in Transition Seminar	8
	83161	CRER	137JR	Life and Career Planning WIT	27
	Total				98
Fall 2006	80309	ENGL	100JR	Composition	24
	80541	MATH	111AR	Elementary Algebra I - WIT	12
	80762	SOSC	160AR	Women in Transition Seminar	7
	83161	CRER	137JR	Life and Career Planning WIT	23
	Total				66
Fall 2007	80309	ENGL	100JR	Composition	13
	80541	MATH	111AR	Elementary Algebra I - WIT	19
	80762	SOSC	160AR	Women in Transition Seminar	6
	83161	CRER	137JR	Life and Career Planning WIT	26
	Total				64
Spring 2004	30305	ENGL	100JR	Composition	21
	30757	SOSC	160AR	Wom.in-Transition Seminar	11
	37080	CRER	137JR	Life and Career Planning-WIT	24
	37704	SOSC	150JR	Gender, Society and Culture	30
	Total				86
Spring 2005	30305	ENGL	100JR	Composition	23
	30757	SOSC	160AR	Wom.in-Transition Seminar	9
	37080	CRER	137JR	Life and Career Planning-WIT	28
	Total				60
Spring 2006	30305	ENGL	100JR	Composition	17
	37080	CRER	137JR	Life and Career Planning-WIT	18
	40238	MATH	111AR	Elementary Algebra I - WIT	5
	Total				40
Spring 2007	30305	ENGL	100JR	Composition	24
	37080	CRER	137JR	Life and Career Planning-WIT	18
	Total				42
Spring 2008	30305	ENGL	100JR	Composition	26
	37080	CRER	137JR	Life and Career Planning-WIT	13
	Total				39

Source: SMCCCD Data Warehouse

Women in Transition Enrollment Report - Fall 2003 to 2007

Enrollment by Gender

	Fall 2003		Fall 2004		Fall 2005		Fall 2006		Fall 2007		Change FA06-FA07	5 Year Row Total & Average	
Female	83	75%	84	76%	57	60%	42	67%	38	61%	-10%	304	69%
Male	26	24%	24	22%	37	39%	21	33%	23	37%	10%	131	30%
Unreported	1	1%	2	2%	1	1%			1	2%		5	1%
Column Total	110	100%	110	100%	95	100%	63	100%	62	100%	-2%	440	100%

Enrollment by Ethnicity

	Fall 2004		Fall 2004		Fall 2005		Fall 2006		Fall 2007		Change FA06-FA07	5 Year Row Total & Average	
African American	6	5%	5	5%	5	5%	5	8%	3	5%	-40%	24	5%
Asian	24	22%	22	20%	24	25%	10	16%	12	19%	20%	92	21%
Filipino	20	18%	19	17%	14	15%	7	11%	13	21%	86%	73	17%
Hispanic	20	18%	20	18%	20	21%	20	32%	15	24%	-25%	95	22%
Native American			3	3%	1	1%			1	2%		5	1%
Other	1	1%	4	4%	3	3%	2	3%	1	2%	-50%	11	3%
Unreported	3	3%	4	4%	4	4%	5	8%	3	5%	-40%	19	4%
White	36	33%	33	30%	24	25%	14	22%	14	23%	0%	121	28%
Column Total	110	100%	110	100%	95	100%	63	100%	62	100%	-2%	440	100%

Enrollment by Age

	Fall 2003		Fall 2004		Fall 2005		Fall 2006		Fall 2007		Change FA06-FA07	5 Year Row Total & Average	
Under 18	1	1%	3	3%	2	2%			2	3%		8	2%
Age 18-22	55	50%	58	53%	51	54%	21	33%	28	45%	33%	213	48%
Age 23-28	23	21%	18	16%	23	24%	18	29%	15	24%	-17%	97	22%
Age 29-39	13	12%	12	11%	8	8%	6	10%	8	13%	33%	47	11%
Age 40-49	13	12%	15	14%	7	7%	11	17%	4	6%	-64%	50	11%
Age 50-59	5	5%	3	3%	3	3%	5	8%	3	5%	-40%	19	4%
Age 60+			1	1%	1	1%	2	3%	2	3%	0%	6	1%
Column Total	110	100%	110	100%	95	100%	63	100%	62	100%	-2%	440	100%

Enrollment by Status

	Fall 2003		Fall 2004		Fall 2005		Fall 2006		Fall 2007		Change FA06-FA07	5 Year Row Total & Average	
Continuing	63	57%	62	56%	49	52%	31	49%	26	42%	-16%	231	53%
Currently K-12			1	1%	1	1%			2	3%		4	1%
First-Time	18	16%	15	14%	26	27%	10	16%	9	15%	-10%	78	18%
First-Time Transfer	5	5%	7	6%	4	4%	4	6%	5	8%	25%	25	6%
Returning	17	15%	18	16%	10	11%	9	14%	12	19%	33%	66	15%
Returning Transfer	7	6%	7	6%	5	5%	9	14%	8	13%	-11%	36	8%
Column Total	110	100%	110	100%	95	100%	63	100%	62	100%	-2%	440	100%

Source: SMCCCD Data Warehouse

*Note: Counts and percents are based on census figures.

Enrollment by Units

	Fall 2003		Fall 2004		Fall 2005		Fall 2006		Fall 2007		Change FA06-FA07	5 Year Row Total & Average	
Part-time	110	100%	110	100%	95	100%	63	100%	62	100%	-2%	440	100%
Column Total	110	100%	110	100%	95	100%	63	100%	62	100%	-2%	440	100%

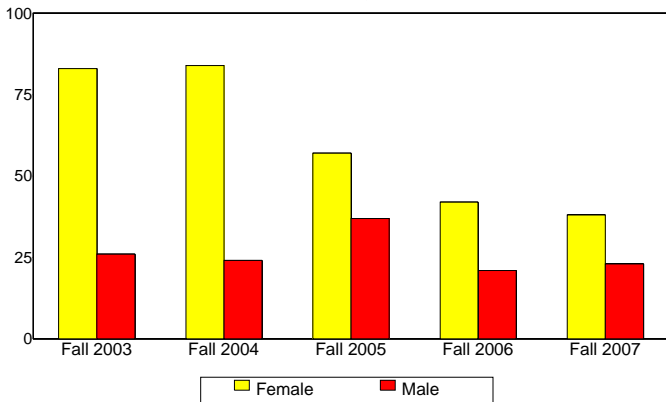
Enrollment by Course-Taking Pattern

	Fall 2003		Fall 2004		Fall 2005		Fall 2006		Fall 2007		Change FA06-FA07	5 Year Row Total & Average	
Day	52	47%	56	51%	43	45%	16	25%	24	39%	50%	191	43%
Day and Evening					3	3%	2	3%	1	2%	-50%	6	1%
Evening	58	53%	54	49%	49	52%	45	71%	37	60%	-18%	243	55%
Column Total	110	100%	110	100%	95	100%	63	100%	62	100%	-2%	440	100%

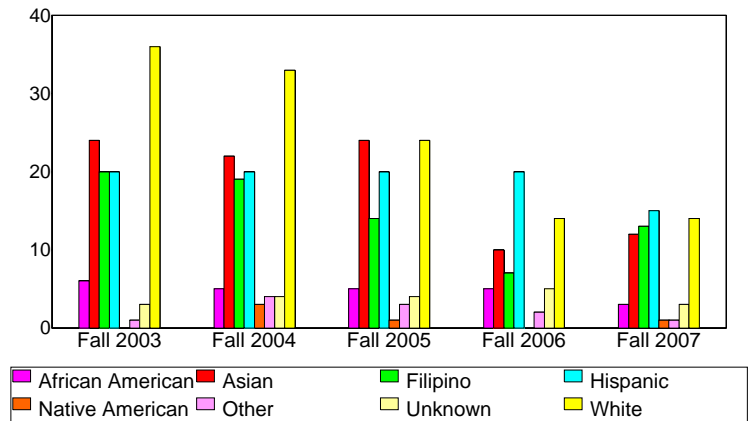
Enrollment by Educational Goal

	Fall 2003		Fall 2004		Fall 2005		Fall 2006		Fall 2007		Change FA06-FA07	5 Year Row Total & Average	
Transfer	75	68%	72	65%	69	73%	44	70%	27	44%	-39%	287	65%
AA/AS w/o Transfer	6	5%	8	7%	5	5%	1	2%	3	5%	200%	23	5%
Certificate w/o Transfer	4	4%	4	4%	2	2%	2	3%	1	2%	-50%	13	3%
Acquire/Update Job Skills	2	2%	6	5%	1	1%	5	8%	1	2%	-80%	15	3%
Complete HS Credits	3	3%	1	1%	2	2%						6	1%
Educational Development	3	3%	4	4%	2	2%	5	8%	2	3%	-60%	16	4%
Improve Basic Skills									2	3%		2	0%
Undecided	16	15%	15	14%	14	15%	6	10%	13	21%	117%	64	15%
Unreported	1	1%							13	21%		14	3%
Column Total	110	100%	110	100%	95	100%	63	100%	62	100%	-2%	440	100%

Enrollment by Gender



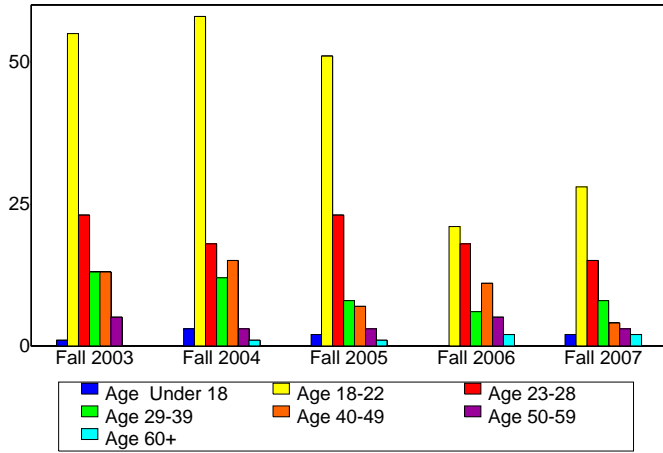
Enrollment by Ethnicity



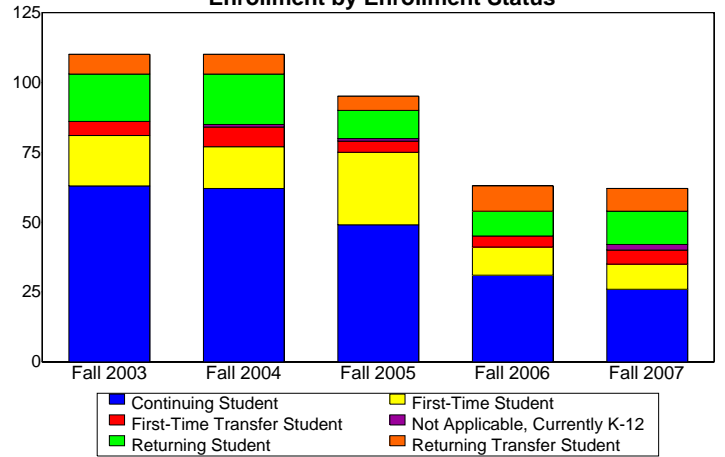
Source: SMCCCD Data Warehouse

*Note: Counts and percents are based on census figures.

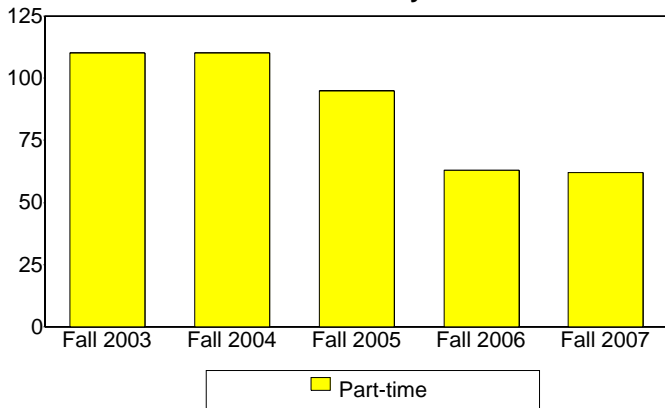
Enrollment by Student Age



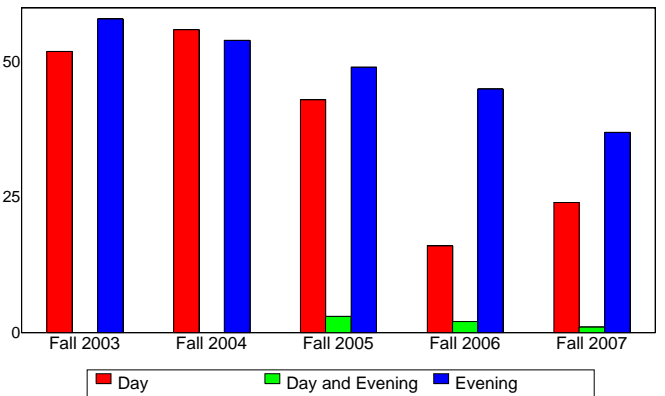
Enrollment by Enrollment Status



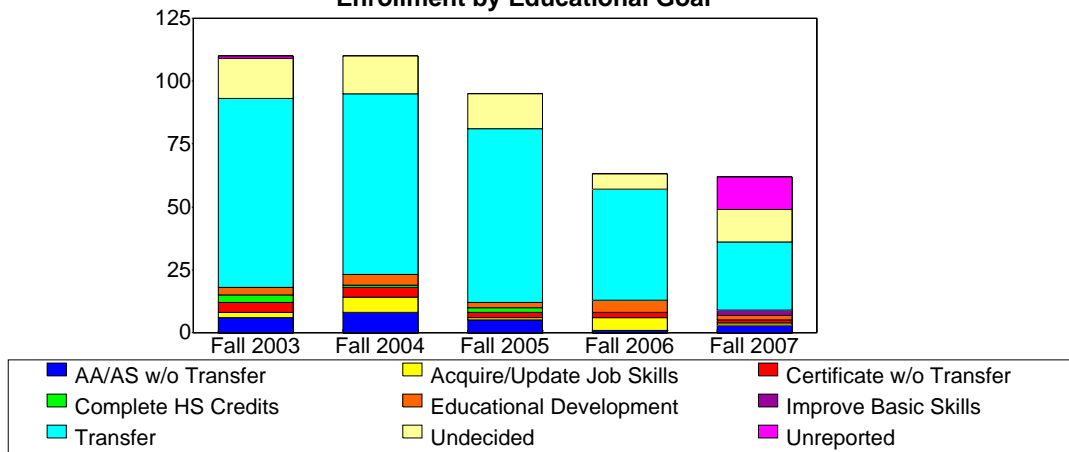
Enrollment by Units



Enrollment by Course-Taking Pattern



Enrollment by Educational Goal



Source: SMCCCD Data Warehouse

Women in Transition Enrollment Report - Spring 2004 to 2008

Enrollment by Gender

	Spring 2004		Spring 2005		Spring 2006		Spring 2007		Spring 2008		Change SP07-SP08	5 Year Row Total & Average	
Female	56	63%	48	78%	30	72%	27	59%	20	44%	-26%	181	63%
Male	30	37%	12	22%	10	28%	14	38%	17	51%	21%	83	35%
Unreported							1	3%	1	5%	0%	2	1%
Column Total	86	100%	60	100%	40	100%	42	100%	38	100%	-10%	266	100%

Enrollment by Ethnicity

	Spring 2006		Spring 2005		Spring 2006		Spring 2007		Spring 2008		Change SP07-SP08	5 Year Row Total & Average	
African American	4	3%	4	5%	3	9%	1	1%			-100%	12	3%
Asian	14	17%	10	19%	2	6%	16	47%	9	22%	-44%	51	22%
Filipino	18	25%	5	9%	8	19%	4	11%	7	17%	75%	42	17%
Hispanic	20	22%	15	24%	9	25%	5	4%	7	15%	40%	56	19%
Native American	2	2%							2	5%		4	1%
White	23	25%	21	34%	16	35%	11	23%	8	22%	-27%	79	27%
Other	2	3%	1	2%	1	3%	1	3%	1	2%	0%	6	3%
Unreported	3	3%	4	7%	1	3%	4	12%	4	17%	0%	16	8%
Column Total	86	100%	60	100%	40	100%	42	100%	38	100%	-10%	266	100%

Enrollment by Age

	Spring 2004		Spring 2005		Spring 2006		Spring 2007		Spring 2008		Change SP07-SP08	5 Year Row Total & Average	
Under 18	1	1%					1	3%	2	10%	100%	4	3%
Age 40-49	11	6%	12	15%	4	0%	9	12%	2	3%	-78%	38	7%
Age 18-22	32	40%	17	34%	16	44%	18	45%	19	53%	6%	102	43%
Age 23-28	27	39%	11	23%	14	43%	7	23%	9	20%	29%	68	30%
Age 29-39	10	9%	12	21%	6	13%	3	6%	4	7%	33%	35	11%
Age 50-59	3	3%	6	5%			4	11%	2	7%	-50%	15	5%
Age 60+	2	1%	2	2%								4	1%
Column Total	86	100%	60	100%	40	100%	42	100%	38	100%	-10%	266	100%

Enrollment by Status

	Spring 2004		Spring 2005		Spring 2006		Spring 2007		Spring 2008		Change SP07-SP08	5 Year Row Total & Average	
Continuing	52	59%	38	69%	22	54%	27	62%	23	61%	-15%	162	61%
Currently K-12	1	1%							2	10%		3	2%
First-Time	5	6%	3	7%	3	9%	1	6%	3	10%	200%	15	7%
First-Time Transfer	8	12%	8	17%	2	6%	5	22%	2	7%	-60%	25	13%
Returning	15	15%	10	6%	10	25%	4	4%	6	10%	50%	45	12%
Returning Transfer	5	7%	1	2%	3	6%	5	6%	2	2%	-60%	16	5%
Column Total	86	100%	60	100%	40	100%	42	100%	38	100%	-10%	266	100%

Source: SMCCCD Data Warehouse

*Note: Counts and percents are based on census figures.

Enrollment by Units

	Spring 2004		Spring 2005		Spring 2006		Spring 2007		Spring 2008		Change SP07-SP08		5 Year Row Total & Average	
Part-time	86	100%	60	100%	40	100%	42	100%	38	100%	-10%	17%	266	100%
Column Total	86	100%	60	100%	40	100%	42	100%	38	100%	-10%	17%	266	100%

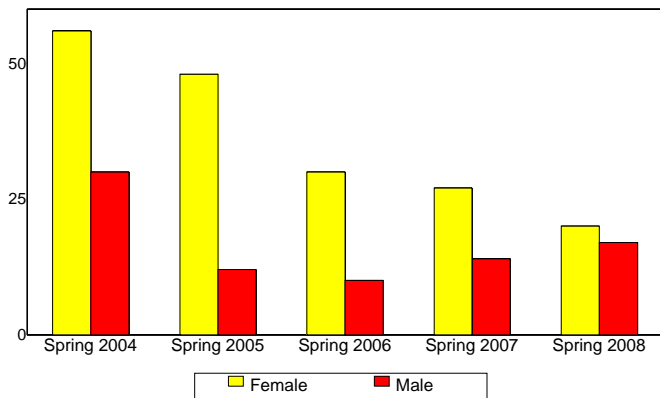
Enrollment by Course-Taking Pattern

	Spring 2004		Spring 2005		Spring 2006		Spring 2007		Spring 2008		Change SP07-SP08		5 Year Row Total & Average	
Day	11	13%	9	12%	5	13%							25	8%
Evening	75	87%	51	88%	35	87%	42	100%	38	100%	-10%		241	92%
Column Total	86	100%	60	100%	40	100%	42	100%	38	100%	-10%		266	100%

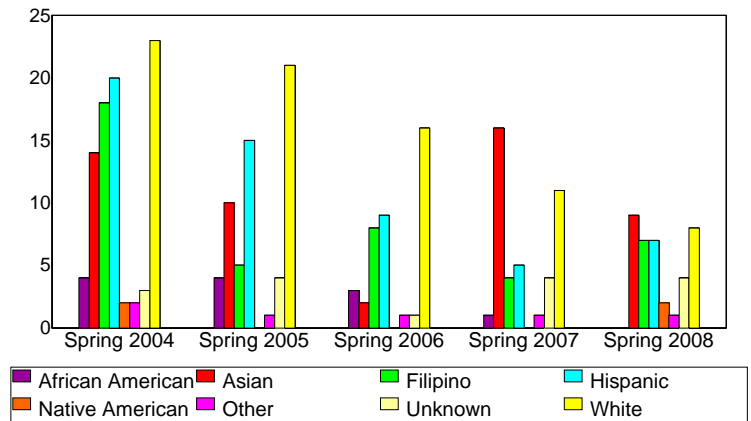
Enrollment by Educational Goal

	Spring 2004		Spring 2005		Spring 2006		Spring 2007		Spring 2008		Change SP07-SP08		5 Year Row Total & Average	
Transfer	51	59%	36	62%	25	62%	21	40%	10	20%	-52%		143	50%
AA/AS w/o Transfer	12	16%	10	21%	7	16%	9	26%	5	12%	-44%		43	18%
Certificate w/o Transfer	2	3%	1	0%					1	2%			4	1%
Acquire/Update Job Skills	2	2%	4	3%	1	3%	2	11%	1	2%	-50%		10	4%
Complete HS Credits									2	10%			2	2%
Educational Development	6	6%	3	7%	4	9%	5	9%	1	2%	-80%		19	6%
Improve Basic Skills							1	0%	1	2%	0%		2	0%
Undecided	13	15%	6	7%	3	9%	4	14%	4	12%	0%		30	12%
Unreported									13	36%			13	7%
Column Total	86	100%	60	100%	40	100%	42	100%	38	100%	-10%		266	100%

Enrollment by Gender



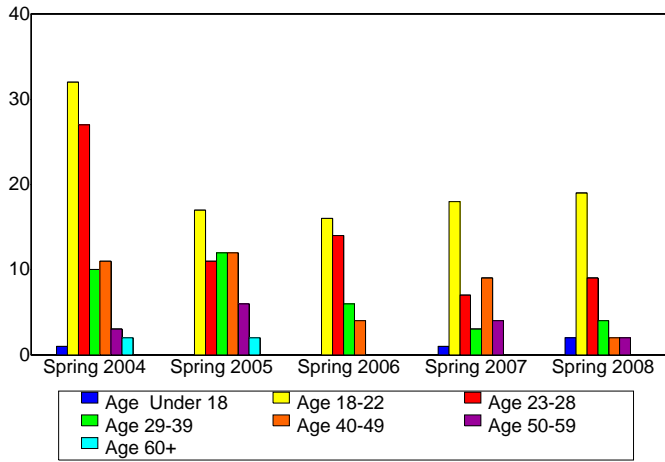
Enrollment by Ethnicity



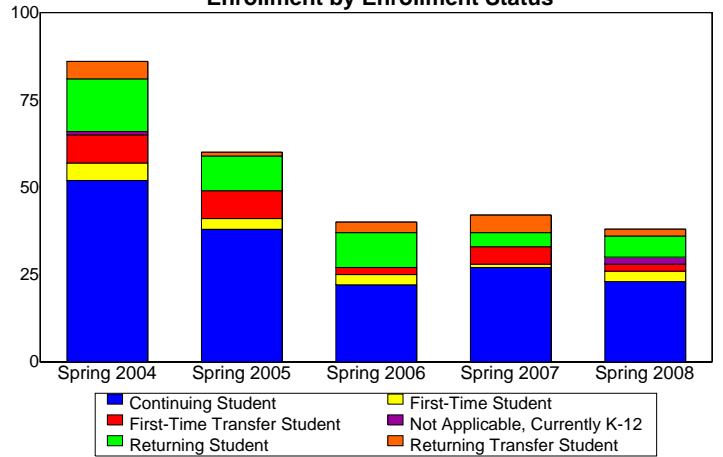
Source: SMCCCD Data Warehouse

*Note: Counts and percents are based on census.

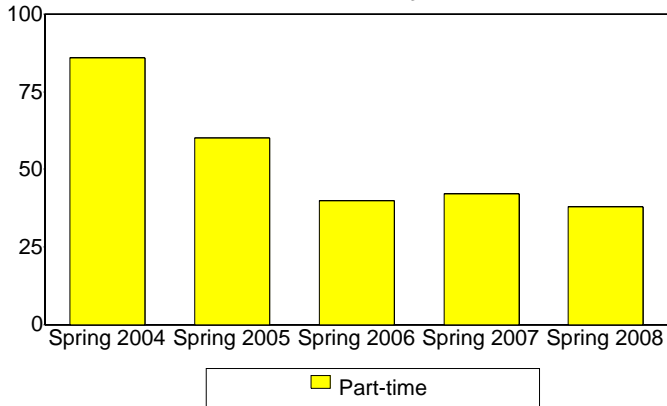
Enrollment by Student Age



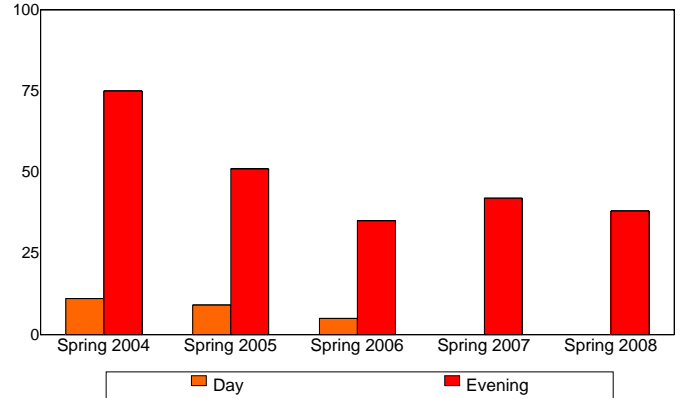
Enrollment by Enrollment Status



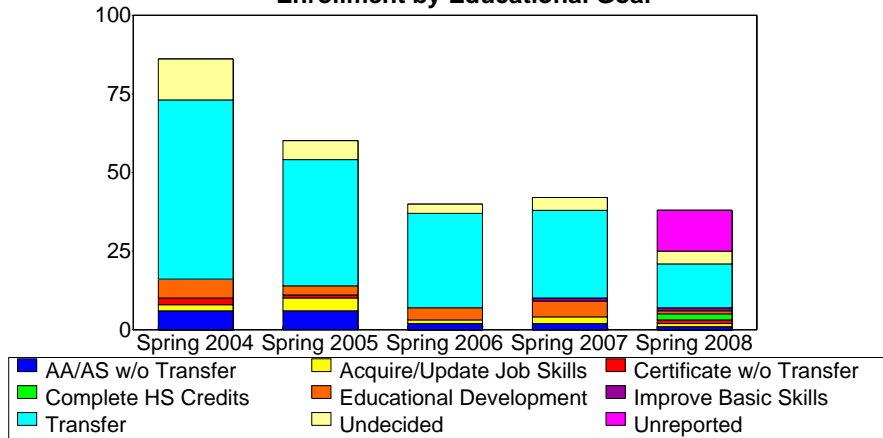
Enrollment by Units



Enrollment by Course-Taking Pattern



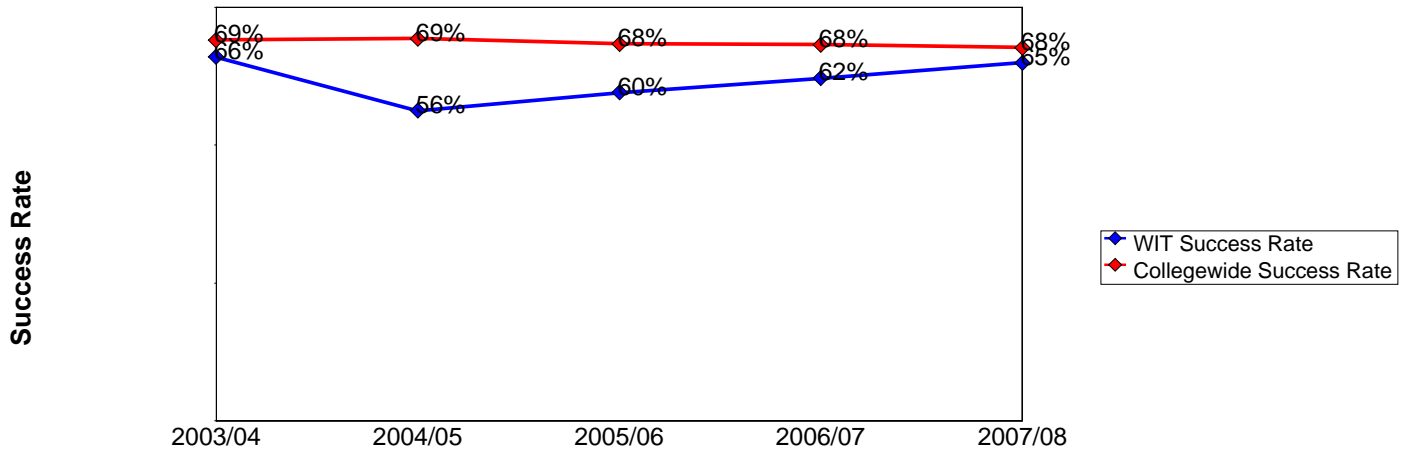
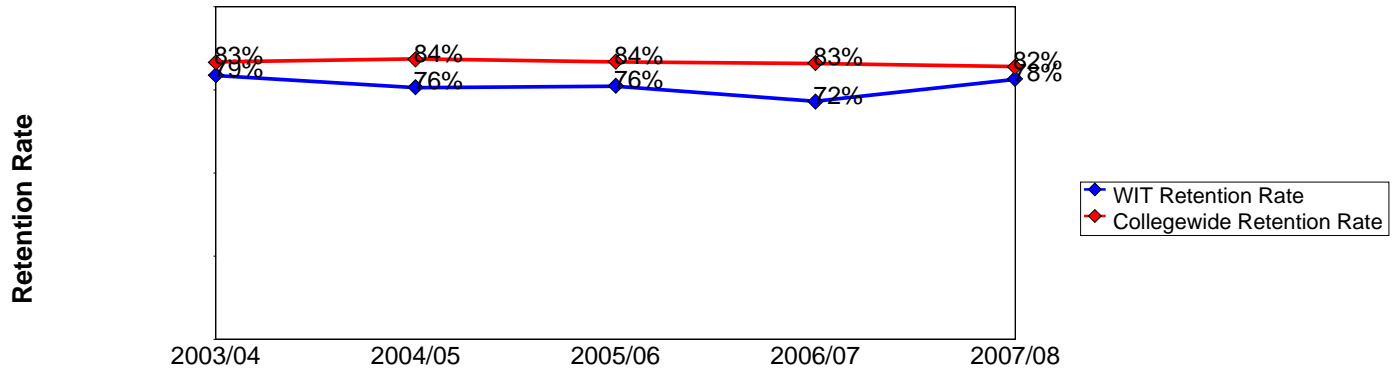
Enrollment by Educational Goal



Source: SMCCCD Data Warehouse

**WIT Overall Success and Retention
2003/04 to 2007/08**

	Head Count	Retention Count	Retention Rate	Success Count	Success Rate
2003/04	185	147	79%	122	66%
2004/05	153	116	76%	86	56%
2005/06	126	96	76%	75	60%
2006/07	95	68	72%	59	62%
2007/08	97	76	78%	63	65%



Source: SMCCCD Data Warehouse

Retention Count: Number of students with A,B,C,D,F,CR,NC, I grades.

Retention Rate: The percentage of students who complete a course with a grade of A,B,C,D,F,CR,NC, I out of total enrollments.

Success Count: Number of students with A,B,C,CR grades.

Success Rate: The percentage of students who complete a course with a grade of A,B,C,CR out of total enrollments.

**WIT Success and Retention by Subject
2003/04 to 2007/08**

Career and Personal Development

	Head Count	Retention Count	Retention Rate	Success Count	Success Rate
2003/04	56	43	77%	36	64%
2004/05	53	45	85%	37	70%
2005/06	42	39	93%	37	88%
2006/07	36	30	83%	27	75%
2007/08	39	33	85%	30	77%

English

	Head Count	Retention Count	Retention Rate	Success Count	Success Rate
2003/04	44	34	77%	30	68%
2004/05	42	26	62%	16	38%
2005/06	36	22	61%	21	58%
2006/07	42	28	67%	25	60%
2007/08	35	28	80%	24	69%

Math

	Head Count	Retention Count	Retention Rate	Success Count	Success Rate
2003/04	37	26	70%	15	41%
2004/05	43	30	70%	18	42%
2005/06	41	28	68%	12	29%
2007/08	30	15	50%	7	23%

Social Science

	Head Count	Retention Count	Retention Rate	Success Count	Success Rate
2003/04	48	44	92%	41	85%
2004/05	15	15	100%	15	100%
2005/06	7	7	100%	5	71%
2007/08	10	10	100%	9	90%

Source: SMCCCD Data Warehouse

Retention Count: Number of students with A,B,C,D,F,CR,NC, I grades.

Retention Rate: The percentage of students who complete a course with a grade of A,B,C,D,F,CR,NC, I out of total enrollments.

Success Count: Number of students with A,B,C,CR grades.

Success Rate: The percentage of students who complete a course with a grade of A,B,C,CR out of total enrollments.

**WIT Grades by Subject
2003/04 to 2007/08**

Career and Personal Development

		A		B		C		F		D		I		W		CR		NC	
137JR	2003/04	23	41%	4	7%	9	16%	6	11%	1	2%			13	23%				
	2004/05	24	45%	10	19%	1	2%	3	6%	3	6%			8	15%	2	4%	2	4%
	2005/06	30	71%	6	14%	1	2%	2	5%					3	7%				
	2006/07	23	64%			3	8%	1	3%	1	3%	1	3%	6	17%	1	3%		
	2007/08	22	56%	6	15%	2	5%			3	8%			6	15%				

English

		A		B		C		F		D		W	
100JR	2003/04	1	2%	16	36%	13	30%	2	5%	2	5%	10	23%
	2004/05	3	7%	7	17%	6	14%	6	14%	4	10%	16	38%
	2005/06	7	19%	7	19%	7	19%	1	3%			14	39%
	2006/07	8	19%	13	31%	4	10%	1	2%	2	5%	14	33%
	2007/08	6	17%	5	14%	13	37%			4	11%	7	20%

Math

		A		B		C		D		F		W	
111AR	2003/04	1	3%	10	27%	4	11%	3	8%	8	22%	11	30%
	2004/05	3	7%	7	16%	8	19%	1	2%	11	26%	13	30%
	2005/06	4	10%	3	7%	5	12%	3	7%	13	32%	13	32%
	2006/07	1	8%			1	8%			3	25%	7	58%
	2007/08			3	17%	2	11%	1	6%	4	22%	8	44%

Social Science

		A		B		C		F		W		CR		NC	
150JR	2003/04	9	35%	10	38%	2	8%	1	4%	4	15%				
160AR	2003/04											20	91%	2	9%
	2004/05											15	100%		
	2005/06											5	71%	2	29%
	2007/08											9	90%	1	10%

Source: SMCCCD Data Warehouse

Retention Count: Number of students with A,B,C,D,F,CR,NC, I grades.

Retention Rate: The percentage of students who complete a course with a grade of A,B,C,D,F,CR,NC, I out of total enrollment.

Success Count: Number of students with A,B,C,CR grades.

Success Rate: The percentage of students who complete a course with a grade of A,B,C,CR out of total enrollments.