



2008




# Scholar Athlete

## Learning Community Outcomes Report

Prepared by:

Office of Planning, Research & Institutional Effectiveness



# Section Contents



Term Enrollment by Course

Term Enrollment by Demographic

Overall Success and Retention

Success and Retention by Subject

Grade Distribution by Subject



**Scholar Athlete Enrollment by Course: 2003/04 - 2007/08**  
**Unduplicated Head Count**

<u>Term Desc</u>	<u>Crn</u>	<u>Subject Code</u>	<u>Section</u>	<u>Course Title</u>	<u>Counts</u>
<b>Fall 2003</b>	80243	CRER	650AC	Athletes Seminar	13
	<b>Total</b>				<b>13</b>
<b>Fall 2004</b>	80243	CRER	650JD	Athletes Seminar	30
	<b>Total</b>				<b>30</b>
<b>Fall 2005</b>	80243	CRER	650AE	Athletes Seminar	37
	90075	ENGL	846AE	Reading & Writing Connection	33
	<b>Total</b>				<b>70</b>
<b>Fall 2006</b>	80243	CRER	650AE	Athletes Seminar	53
	90075	ENGL	846AS	Reading & Writing Connection	40
	<b>Total</b>				<b>93</b>
<b>Fall 2007</b>	80243	CRER	650AE	Athletes Seminar	43
	90075	ENGL	846AE	Reading & Writing Connections	30
	<b>Total</b>				<b>73</b>
<b>Spring 2004</b>	39392	CRER	650JA	Athletes Seminar	20
	<b>Total</b>				<b>20</b>
<b>Spring 2006</b>	39900	ENGL	100AS	Composition	32
	<b>Total</b>				<b>32</b>
<b>Spring 2007</b>	39900	ENGL	100AS	Composition	38
	<b>Total</b>				<b>38</b>
<b>Spring 2008</b>	30292	ENGL	100AE	Composition - Scholar-Athlete	39
	39900	ENGL	100BE	Composition - Scholar Athlete	35
	41382	P.E.	105JA	The Student-Athlete Experience	42
	<b>Total</b>				<b>116</b>

Source: SMCCCD Data Warehouse

# Scholar Athlete Enrollment Report - Fall 2003 to 2007

## Enrollment by Gender

	Fall 2003		Fall 2004		Fall 2005		Fall 2006		Fall 2007		Change FA06-FA07	5 Year Row Total & Average	
Female	1	2%	3	11%	19	33%	29	37%	17	30%	-41%	69	29%
Male	12	98%	27	89%	37	63%	49	62%	44	69%	-10%	169	69%
Unknown					2	4%	1	1%	1	1%	0%	4	1%
<b>Column Total</b>	<b>13</b>	<b>100%</b>	<b>30</b>	<b>100%</b>	<b>58</b>	<b>100%</b>	<b>79</b>	<b>100%</b>	<b>62</b>	<b>100%</b>	<b>-22%</b>	<b>242</b>	<b>100%</b>

## Enrollment by Ethnicity

	Fall 2003		Fall 2004		Fall 2005		Fall 2006		Fall 2007		Change FA06-FA07	5 Year Row Total & Average	
African American	3	25%	4	14%	8	14%	11	14%	8	12%	-27%	34	14%
Asian			1	4%	3	5%	8	10%	4	6%	-50%	16	6%
Filipino			1	4%	2	3%	4	5%	1	1%	-75%	8	3%
Hispanic	6	43%	7	22%	20	35%	28	36%	20	35%	-29%	81	34%
Native American					2	4%	1	1%	1	2%	0%	4	2%
Other	1	8%	1	1%	1	2%	3	4%	2	3%	-33%	8	3%
Unreported					3	5%	6	8%	7	11%	17%	16	7%
White	3	24%	16	56%	19	32%	18	23%	19	30%	6%	75	31%
<b>Column Total</b>	<b>13</b>	<b>100%</b>	<b>30</b>	<b>100%</b>	<b>58</b>	<b>100%</b>	<b>79</b>	<b>100%</b>	<b>62</b>	<b>100%</b>	<b>-22%</b>	<b>242</b>	<b>100%</b>

## Enrollment by Age

	Fall 2003		Fall 2004		Fall 2005		Fall 2006		Fall 2007		Change FA06-FA07	5 Year Row Total & Average	
Under 18					2	4%	2	3%			-100%	4	2%
Age 18-22	11	84%	26	89%	53	93%	70	89%	58	95%	-17%	218	91%
Age 23-28	2	16%	3	8%	1	2%	5	6%	3	3%	-40%	14	5%
Age 29-39			1	4%	2	2%	2	3%	1	2%	-50%	6	2%
<b>Column Total</b>	<b>13</b>	<b>100%</b>	<b>30</b>	<b>100%</b>	<b>58</b>	<b>100%</b>	<b>79</b>	<b>100%</b>	<b>62</b>	<b>100%</b>	<b>-22%</b>	<b>242</b>	<b>100%</b>

## Enrollment by Status

	Fall 2003		Fall 2004		Fall 2005		Fall 2006		Fall 2007		Change FA06-FA07	5 Year Row Total & Average	
Continuing	5	41%	13	43%	18	32%	24	30%	29	35%	21%	89	34%
First-Time	5	41%	4	14%	28	50%	40	51%	25	53%	-38%	102	47%
First-Time Transfer	3	18%	5	18%	2	4%	7	9%	3	6%	-57%	20	8%
Returning			7	22%	9	14%	5	6%	3	3%	-40%	24	8%
Returning Transfer			1	4%			3	4%	2	2%	-33%	6	2%
<b>Column Total</b>	<b>13</b>	<b>100%</b>	<b>30</b>	<b>100%</b>	<b>57</b>	<b>100%</b>	<b>79</b>	<b>100%</b>	<b>62</b>	<b>100%</b>	<b>-22%</b>	<b>241</b>	<b>100%</b>

Source: SMCCCD Data Warehouse

\*Note: Counts and percents are based on census figures.

**Enrollment by Units**

	Fall 2003		Fall 2004		Fall 2005		Fall 2006		Fall 2007		Change FA06-FA07	5 Year Row Total & Average	
Part-time	13	100%	30	100%	58	100%	79	100%	62	100%	-22%	242	100%
<b>Column Total</b>	<b>13</b>	<b>100%</b>	<b>30</b>	<b>100%</b>	<b>58</b>	<b>100%</b>	<b>79</b>	<b>100%</b>	<b>62</b>	<b>100%</b>	<b>-22%</b>	<b>242</b>	<b>100%</b>

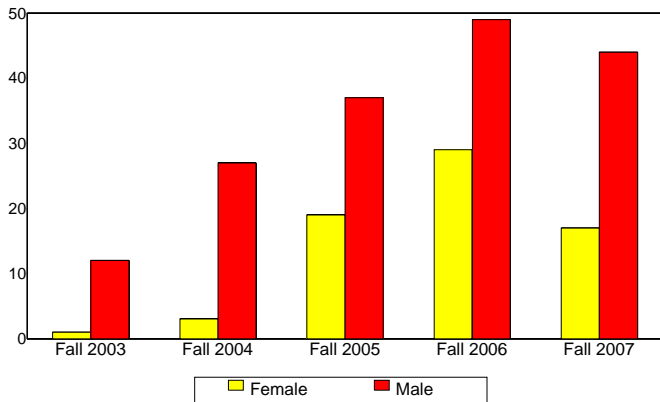
**Enrollment by Course-Taking Pattern**

	Fall 2003		Fall 2004		Fall 2005		Fall 2006		Fall 2007		Change FA06-FA07	5 Year Row Total & Average	
Day					58	100%	79	100%	62	100%	-22%	199	85%
Evening	13	100%	30	100%								43	15%
<b>Column Total</b>	<b>13</b>	<b>100%</b>	<b>30</b>	<b>100%</b>	<b>58</b>	<b>100%</b>	<b>79</b>	<b>100%</b>	<b>62</b>	<b>100%</b>	<b>-22%</b>	<b>242</b>	<b>100%</b>

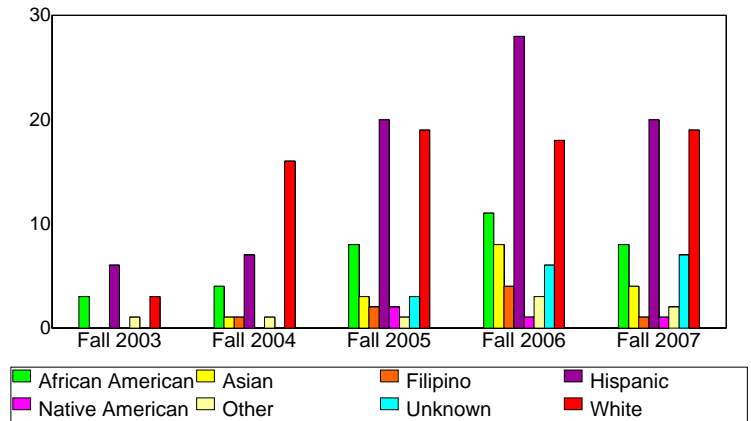
**Enrollment by Educational Goal**

	Fall 2003		Fall 2004		Fall 2005		Fall 2006		Fall 2007		Change FA06-FA07	5 Year Row Total & Average	
Transfer	8	66%	17	57%	40	70%	53	67%	39	59%	-26%	157	64%
AA/AS w/o Transfer	1	2%	3	11%	2	3%	3	4%	2	3%	-33%	11	4%
Acquire/Update Job Skills			1	4%	1	2%	4	5%	3	5%	-25%	9	4%
Certificate w/o Transfer									1	2%		1	1%
Educational Development	1	8%			1	2%	3	4%	3	5%	0%	8	4%
Unreported									5	9%		5	3%
Improve Basic Skills					1	0%						1	0%
Undecided	3	25%	9	29%	13	23%	16	20%	9	16%	-44%	50	20%
<b>Column Total</b>	<b>13</b>	<b>100%</b>	<b>30</b>	<b>100%</b>	<b>58</b>	<b>100%</b>	<b>79</b>	<b>100%</b>	<b>62</b>	<b>100%</b>	<b>-22%</b>	<b>242</b>	<b>100%</b>

**Enrollment by Gender**



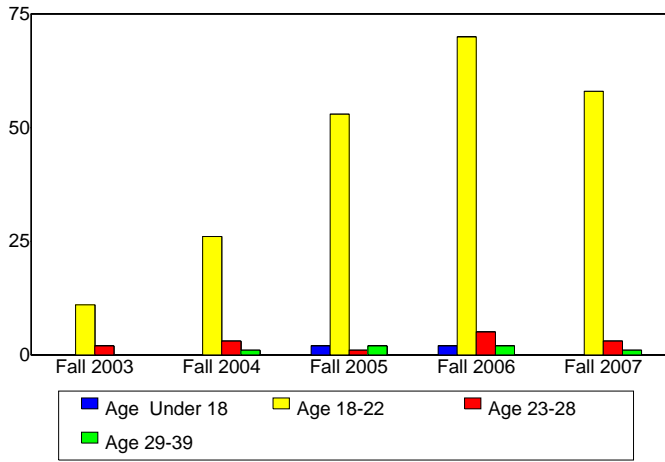
**Enrollment by Ethnicity**



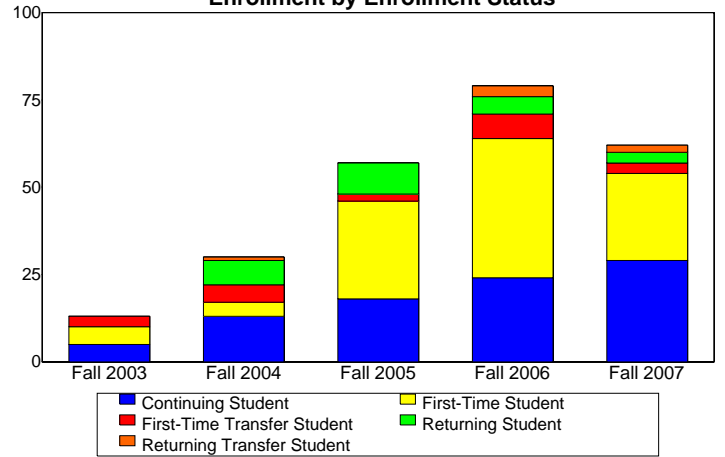
Source: SMCCCD Data Warehouse

\*Note: Counts and percents are based on census.

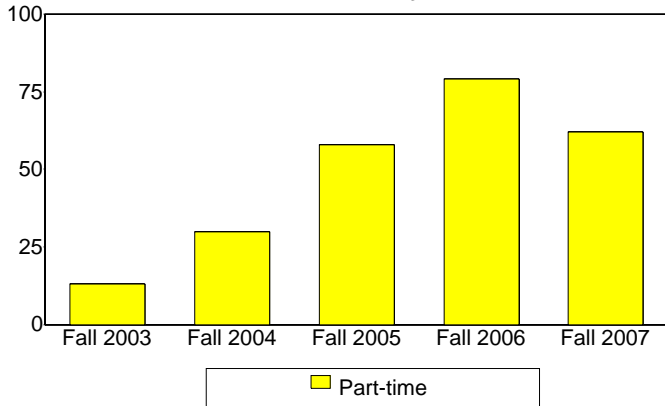
**Enrollment by Student Age**



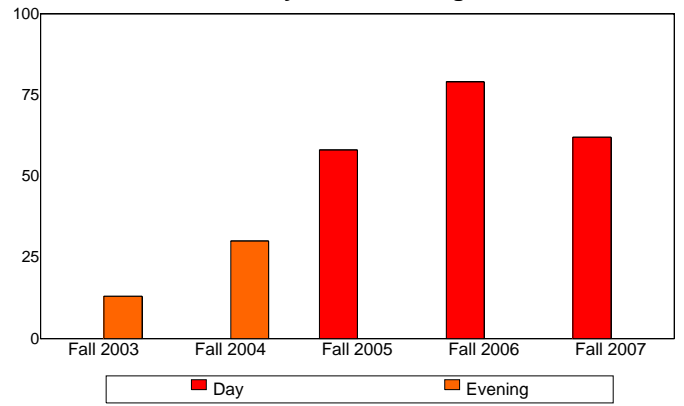
**Enrollment by Enrollment Status**



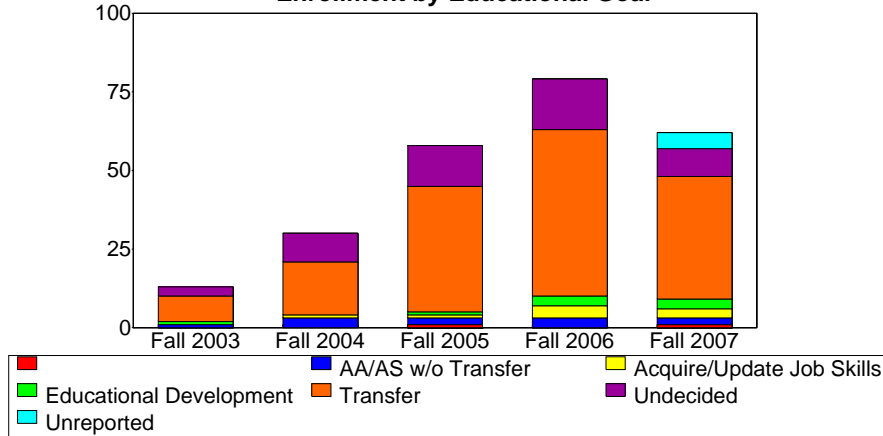
**Enrollment by Units**



**Enrollment by Course-Taking Pattern**



**Enrollment by Educational Goal**



Source: SMCCCD Data Warehouse

# Scholar Athlete Enrollment Report - Spring 2004 to 2008

## Enrollment by Gender

	Spring 2004		Spring 2006		Spring 2007		Spring 2008		Change SP07-SP08	5 Year Row Total & Average	
Female			7	20%	11	28%	32	34%	191%	50	29%
Male	20	100%	23	73%	27	72%	71	66%	163%	141	70%
Unknown			2	7%			1	0%		3	1%
<b>Column Total</b>	<b>20</b>	<b>100%</b>	<b>32</b>	<b>100%</b>	<b>38</b>	<b>100%</b>	<b>104</b>	<b>100%</b>	<b>174%</b>	<b>194</b>	<b>100%</b>

## Enrollment by Ethnicity

	Spring 2004		Spring 2006		Spring 2007		Spring 2008		Change SP07-SP08	5 Year Row Total & Average	
African American	10	48%	7	23%	4	10%	12	10%	200%	33	15%
Asian			2	4%	6	18%	12	8%	100%	20	9%
Filipino					2	5%	3	3%	50%	5	3%
Hispanic	5	24%	8	24%	10	26%	32	32%	220%	55	29%
Native American			1	3%	1	3%	1	1%	0%	3	2%
Other	2	11%					3	4%		5	3%
Unreported	2	11%	4	13%	1	3%	10	8%	900%	17	8%
White	1	6%	10	33%	14	36%	31	33%	121%	56	31%
<b>Column Total</b>	<b>20</b>	<b>100%</b>	<b>32</b>	<b>100%</b>	<b>38</b>	<b>100%</b>	<b>104</b>	<b>100%</b>	<b>174%</b>	<b>194</b>	<b>100%</b>

## Enrollment by Age

	Spring 2004		Spring 2006		Spring 2007		Spring 2008		Change SP07-SP08	5 Year Row Total & Average	
Under 18			1	3%			1	0%		2	0%
Age 18-22	19	94%	27	89%	37	97%	87	89%	135%	170	91%
Age 23-28			3	7%	1	3%	10	7%	900%	14	6%
Age 29-39	1	6%					5	3%		6	2%
Age 40-49			1	1%						1	0%
Age 50-59							1	1%		1	0%
<b>Column Total</b>	<b>20</b>	<b>100%</b>	<b>32</b>	<b>100%</b>	<b>38</b>	<b>100%</b>	<b>104</b>	<b>100%</b>	<b>174%</b>	<b>194</b>	<b>100%</b>

## Enrollment by Status

	Spring 2004		Spring 2006		Spring 2007		Spring 2008		Change SP07-SP08	5 Year Row Total & Average	
Continuing	18	89%	31	100%	37	95%	101	97%	173%	187	97%
First-Time	1	6%								1	0%
First-Time Transfer	1	6%			1	5%	2	2%	100%	4	3%
Returning Transfer							1	1%		1	0%
<b>Column Total</b>	<b>20</b>	<b>100%</b>	<b>31</b>	<b>100%</b>	<b>38</b>	<b>100%</b>	<b>104</b>	<b>100%</b>	<b>174%</b>	<b>193</b>	<b>100%</b>

Source: SMCCD Data Warehouse

\*Note: Counts and percents are based on census figures.

**Enrollment by Units**

	Spring 2004		Spring 2006		Spring 2007		Spring 2008		Change SP07-SP08	5 Year Row Total & Average	
Part-time	20	100%	32	100%	38	100%	104	100%	174%	194	100%
<b>Column Total</b>	<b>20</b>	<b>100%</b>	<b>32</b>	<b>100%</b>	<b>38</b>	<b>100%</b>	<b>104</b>	<b>100%</b>	<b>174%</b>	<b>194</b>	<b>100%</b>

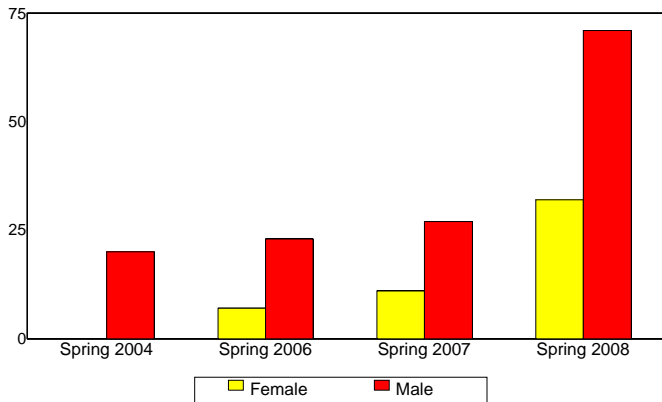
**Enrollment by Course-Taking Pattern**

	Spring 2004		Spring 2006		Spring 2007		Spring 2008		Change SP07-SP08	5 Year Row Total & Average	
Day			32	100%	38	100%	62	62%	63%	132	69%
Day and Evening							12	12%		12	7%
Evening	20	100%					30	26%		50	23%
<b>Column Total</b>	<b>20</b>	<b>100%</b>	<b>32</b>	<b>100%</b>	<b>38</b>	<b>100%</b>	<b>104</b>	<b>100%</b>	<b>174%</b>	<b>194</b>	<b>100%</b>

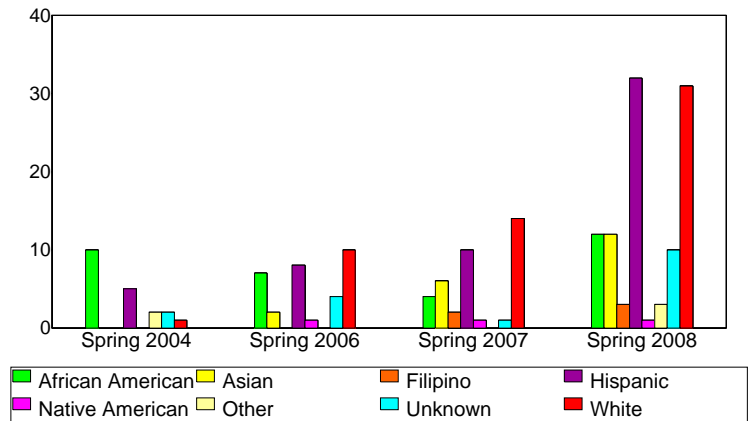
**Enrollment by Educational Goal**

	Spring 2004		Spring 2006		Spring 2007		Spring 2008		Change SP07-SP08	5 Year Row Total & Average	
Transfer	16	82%	24	74%	27	69%	64	61%	137%	131	66%
AA/AS w/o Transfer	1	6%	1	3%	2	5%	2	1%	0%	6	3%
Acquire/Update Job Skills	1	6%			2	8%	2	3%	0%	5	3%
Complete HS Credits							1	1%		1	0%
Educational Development					2	5%	8	9%	300%	10	6%
Unreported							20	18%		20	11%
Undecided	2	7%	7	23%	5	13%	7	8%	40%	21	11%
<b>Column Total</b>	<b>20</b>	<b>100%</b>	<b>32</b>	<b>100%</b>	<b>38</b>	<b>100%</b>	<b>104</b>	<b>100%</b>	<b>174%</b>	<b>194</b>	<b>100%</b>

**Enrollment by Gender**



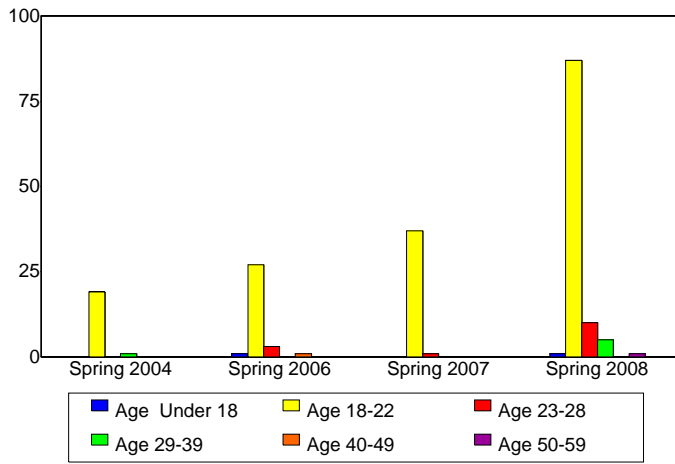
**Enrollment by Ethnicity**



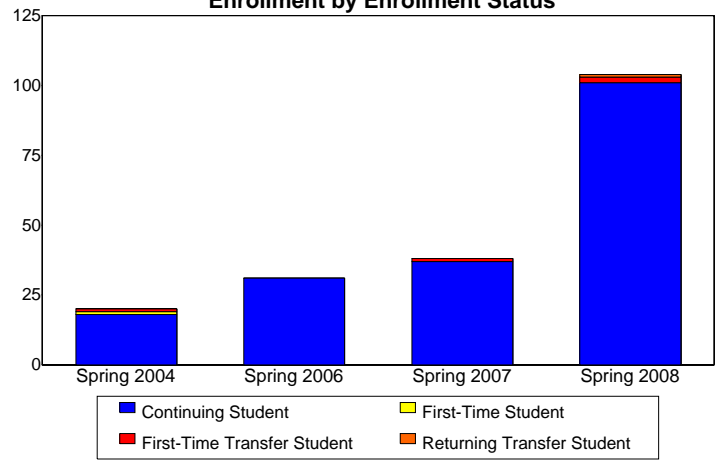
Source: SMCCCD Data Warehouse

\*Note: Counts and percents are based on census.

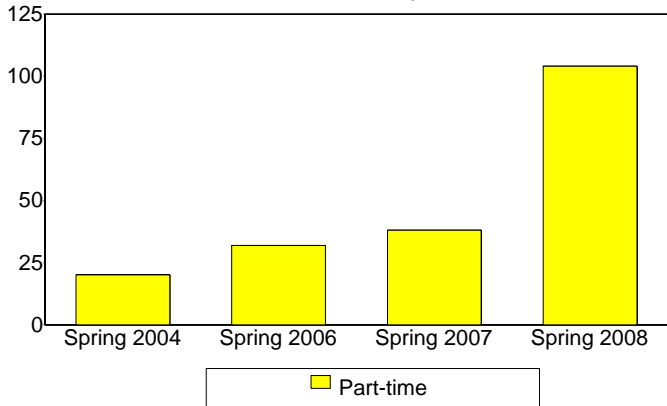
**Enrollment by Student Age**



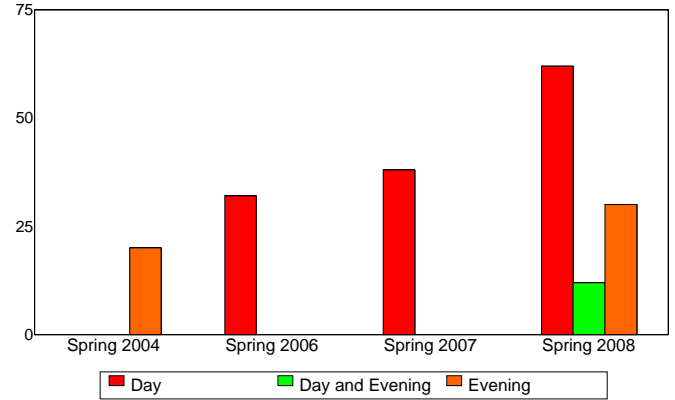
**Enrollment by Enrollment Status**



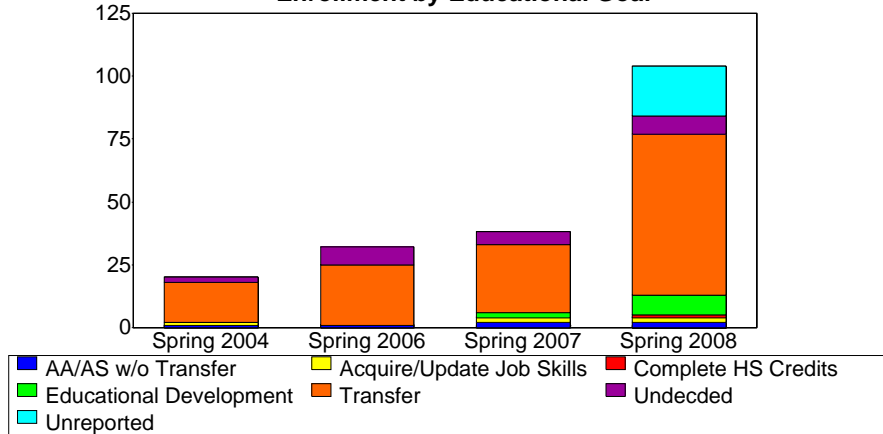
**Enrollment by Units**



**Enrollment by Course-Taking Pattern**



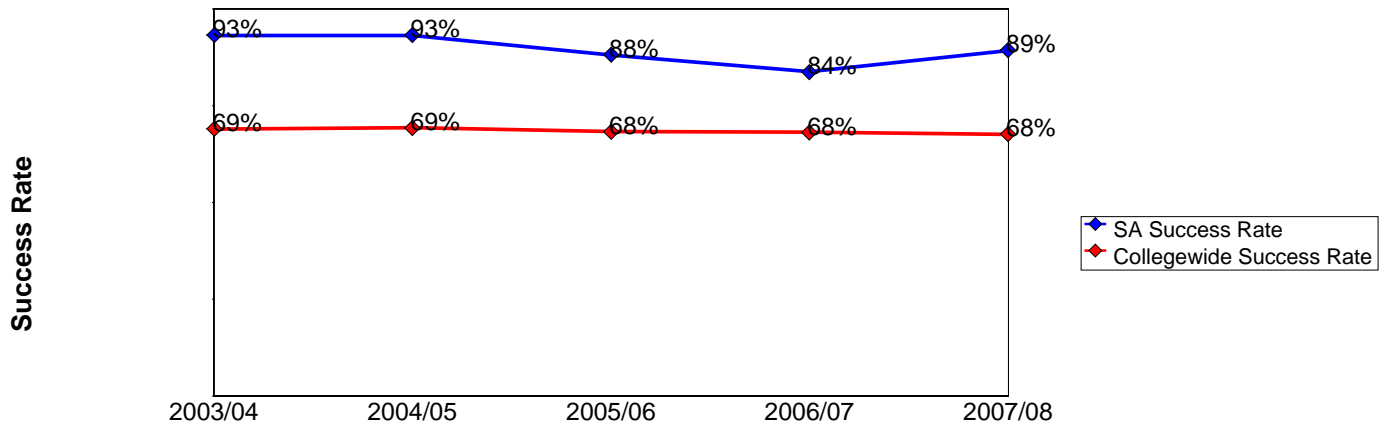
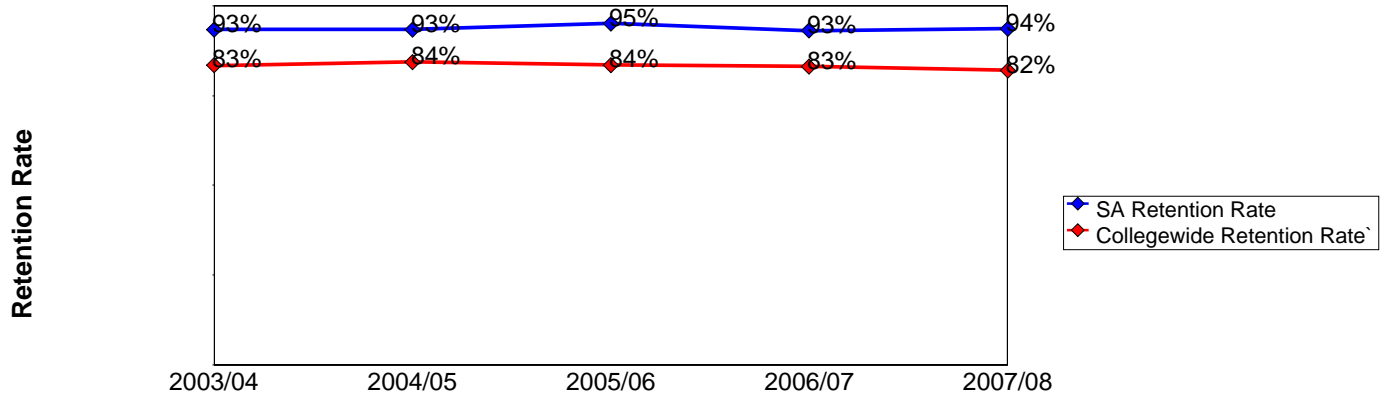
**Enrollment by Educational Goal**



Source: SMCCCD Data Warehouse

**Scholar Athlete Overall Success and Retention  
2003/04 to 2007/08**

	Head Count	Retention Count	Retention Rate	Success Count	Success Rate
<b>2003/04</b>	30	28	93%	28	93%
<b>2004/05</b>	30	28	93%	28	93%
<b>2005/06</b>	102	97	95%	90	88%
<b>2006/07</b>	130	121	93%	109	84%
<b>2007/08</b>	188	176	94%	168	89%



Source: SMCCCD Data Warehouse

Retention Count: Number of students with A,B,C,D,F,CR,NC, I grades.

Retention Rate: The percentage of students who complete a course with a grade of A,B,C,D,F,CR,NC, I out of total enrollments.

Success Count: Number of students with A,B,C,CR grades.

Success Rate: The percentage of students who complete a course with a grade of A,B,C,CR out of total enrollments.

**Scholar Athlete Success and Retention by Subject  
2003/04 to 2007/08**

**Career and Personal Development**

	<b>Head Count</b>	<b>Retention Count</b>	<b>Retention Rate</b>	<b>Success Count</b>	<b>Success Rate</b>
<b>2003/04</b>	30	28	93%	28	93%
<b>2004/05</b>	30	28	93%	28	93%
<b>2005/06</b>	37	35	95%	35	95%
<b>2006/07</b>	53	51	96%	51	96%
<b>2007/08</b>	43	43	100%	43	100%

**English**

	<b>Head Count</b>	<b>Retention Count</b>	<b>Retention Rate</b>	<b>Success Count</b>	<b>Success Rate</b>
<b>2005/06</b>	65	62	95%	55	85%
<b>2006/07</b>	77	70	91%	58	75%
<b>2007/08</b>	103	93	90%	85	83%

**Physical Education**

	<b>Head Count</b>	<b>Retention Count</b>	<b>Retention Rate</b>	<b>Success Count</b>	<b>Success Rate</b>
<b>2007/08</b>	42	40	95%	40	95%

Source: SMCCCD Data Warehouse

Retention Count: Number of students with A,B,C,D,F,CR,NC, I grades.

Retention Rate: The percentage of students who complete a course with a grade of A,B,C,D,F,CR,NC, I out of total enrollments.

Success Count: Number of students with A,B,C,CR grades.

Success Rate: The percentage of students who complete a course with a grade of A,B,C,CR out of total enrollments.

**Scholar Athlete Grades by Subject  
2003/04 to 2007/08**

**Career and Personal Development**

		A		W	
<b>650AC</b>	2003/04	12	92%	1	8%
<b>650AE</b>	2005/06	35	94%	2	6%
	2006/07	51	96%	2	4%
	2007/08	43	100%		
<b>650JA</b>	2003/04	16	93%	1	7%
<b>650JD</b>	2004/05	28	93%	2	7%

**English**

		A		B		C		D		F		W	
<b>100AE</b>	2007/08	5	12%	10	29%	15	42%	4	8%	1	2%	3	8%
<b>100AS</b>	2005/06	10	33%	3	10%	11	34%	6	20%			2	4%
	2006/07	1	3%	7	18%	19	53%	1	3%	4	11%	5	13%
<b>100BE</b>	2007/08			14	45%	12	32%	2	4%	1	4%	6	15%
<b>846AE</b>	2005/06	4	12%	11	33%	16	48%			1	3%	1	3%
	2007/08	6	22%	10	39%	13	37%					1	2%
<b>846AS</b>	2006/07	3	8%	7	18%	21	53%	3	7%	4	10%	2	5%

**Physical Education**

		A		CR		W	
<b>105JA</b>	2007/08	39	94%	1	2%	2	4%

Source: SMCCCD Data Warehouse

Retention Count: Number of students with A,B,C,D,F,CR,NC, I grades.

Retention Rate: The percentage of students who complete a course with a grade of A,B,C,D,F,CR,NC, I out of total enrollments

Success Count: Number of students with A,B,C,CR grades.

Success Rate: The percentage of students who complete a course with a grade of A,B,C,CR out of total enrollments.

Office of Planning, Research & Institutional Effectiveness

6/25/2008