



2007




Scholar Athlete

Learning Community Outcomes Report

Prepared by:

Office of Planning, Research & Institutional Effectiveness



Section Contents



Term Enrollment by Course

Term Enrollment by Demographic

Overall Success and Retention

Success and Retention by Subject

Grade Distribution by Subject



**Scholar Athlete Enrollment by Course: 2003/04 to 2006/07
Unduplicated Headcount**

<u>Term Desc</u>	<u>Crn</u>	<u>Subject</u>	<u>Section</u>	<u>Course Title</u>	<u>Count</u>
Fall 2003	80243	CRER	650AC	Athletes Seminar	13
	Total				13
Spring 2004	39392	CRER	650JA	Athletes Seminar	19
	Total				19
Fall 2004	80243	CRER	650JD	Athletes Seminar	30
	Total				30
Fall 2005	80243	CRER	650AE	Athletes Seminar	38
	90075	ENGL	846AE	Reading & Writing Connection	33
	Total				71
Spring 2006	39900	ENGL	100AS	Composition	32
	Total				32
Fall 2006	80243	CRER	650AE	Athletes Seminar	53
	90075	ENGL	846AS	Reading & Writing Connection	40
	Total				93
Spring 2007	39900	ENGL	100AS	Composition	38
	Total				38
Fall 2007	80243	CRER	650AE	Athletes Seminar	42
	90075	ENGL	846AE	Reading & Writing Connections	30
	Total				72

**Scholar Athlete Demographics
Fall 2003 to Fall 2007**

Gender	Fall 2005		Fall 2004		Fall 2005		Fall 2006		Fall 2007		Total FA03-FA07 and %	
Female	1	8%	3	10%	19	33%	29	37%	17	27%	69	-41%
Male	12	92%	27	90%	37	64%	49	62%	44	71%	169	-10%
Unreported					2	3%	1	1%	1	2%	4	0%
Total	13	100%	30	100%	58	100%	79	100%	62	100%	242	-22%

Age	Fall 2003		Fall 2004		Fall 2005		Fall 2006		Fall 2007		Total FA03- FA07 and % Change FA06-FA07	
Under 18					2	3%	2	3%			4	-100%
Age 18-22	11	85%	26	87%	53	91%	70	89%	58	94%	218	-17%
Age 23-28	2	15%	3	10%	1	2%	5	6%	3	5%	14	-40%
Age 29-39			1	3%	2	3%	2	3%	1	2%	6	-50%
Total	13	100%	30	100%	58	100%	79	100%	62	100%	242	-22%

Ethnicity	Fall 2003		Fall 2004		Fall 2005		Fall 2006		Fall 2007		Total FA03- FA07 and % Change FA06-FA07	
African American	3	23%	4	13%	8	14%	11	14%	8	13%	34	-27%
Asian			1	3%	3	5%	8	10%	4	6%	16	-50%
Filipino			1	3%	2	3%	4	5%	1	2%	8	-75%
Hispanic	6	46%	7	23%	20	34%	28	35%	20	32%	81	-29%
Native American					2	3%	1	1%	1	2%	4	0%
White	3	23%	16	53%	19	33%	18	23%	19	31%	75	6%
Other	1	8%	1	3%	1	2%	3	4%	2	3%	8	-33%
Unreported					3	5%	6	8%	7	11%	16	17%
Total	13	100%	30	100%	58	100%	79	100%	62	100%	242	-22%

Enrollment Status	Fall 2003		Fall 2004		Fall 2005		Fall 2006		Fall 2007		Total FA03- FA07 and % Change FA06-FA07	
Continuing	5	38%	13	43%	18	31%	24	30%	29	47%	89	21%
First-Time	5	38%	4	13%	28	48%	40	51%	25	40%	102	-38%
First-Time Transfer	3	23%	5	17%	2	3%	7	9%	3	5%	20	-57%
Returning			7	23%	9	16%	5	6%	3	5%	24	-40%
Returning Transfer			1	3%			3	4%	2	3%	6	-33%
Tech Prep Student					1	2%					1	
Total	13	100%	30	100%	58	100%	79	100%	62	100%	242	-22%

Educational Goal	Fall 2003		Fall 2004		Fall 2005		Fall 2006		Fall 2007		Total FA03- FA07 and % Change FA06-FA07	
AA/AS & Transfer	8	62%	14	47%	32	55%	44	56%	29	51%	127	-34%
AA/AS w/o Transfer	1	8%	3	10%	2	3%	3	4%	2	4%	11	-33%
Transfer w/o AA/AS			3	10%	8	14%	9	11%	10	18%	30	11%
Certificate w/o Transfer									1	2%	1	
Acquire Job Skills			1	3%			1	1%	1	2%	3	0%
Educational Development	1	8%			1	2%	3	4%	3	5%	8	0%
Improve Basic Skills					1	2%					1	
Update Job Skills					1	2%	3	4%	2	4%	6	-33%
Undecided	3	23%	9	30%	13	22%	16	20%	9	16%	50	-44%
Total	13	100%	30	100%	58	100%	79	100%	57	100%	237	-28%

Scholar Athlete Demographics Spring 2004 to Spring 2007

Gender

	Spring 2004		Spring 2006		Spring 2007		Total SP04-SP07 and % Change SP06-SP07	
Female			7	22%	11	29%	18	57%
Male	19	100%	23	72%	27	71%	69	17%
Unreported			2	6%			2	-100%
Total	19	100%	32	100%	38	100%	89	19%

Age

	Spring 2004		Spring 2006		Spring 2007		Total SP04-SP07 and % Change SP06-SP07	
Under 18			1	3%			1	-100%
Age 18-22	18	95%	27	84%	37	97%	82	37%
Age 23-28			3	9%	1	3%	4	-67%
Age 29-39	1	5%					1	
Age 40-49			1	3%			1	-100%
Total	19	100%	32	100%	38	100%	89	19%

Ethnicity

	Spring 2004		Spring 2006		Spring 2007		Total SP04-SP07 and % Change SP06-SP07	
African American	10	53%	7	22%	4	11%	21	-43%
Asian			2	6%	6	16%	8	200%
Filipino					2	5%	2	
Hispanic	4	21%	8	25%	10	26%	22	25%
Native American			1	3%	1	3%	2	0%
White	1	5%	10	31%	14	37%	25	40%
Other	2	11%					2	
Unreported	2	11%	4	13%	1	3%	7	-75%
Total	19	100%	32	100%	38	100%	89	19%

Enrollment Status

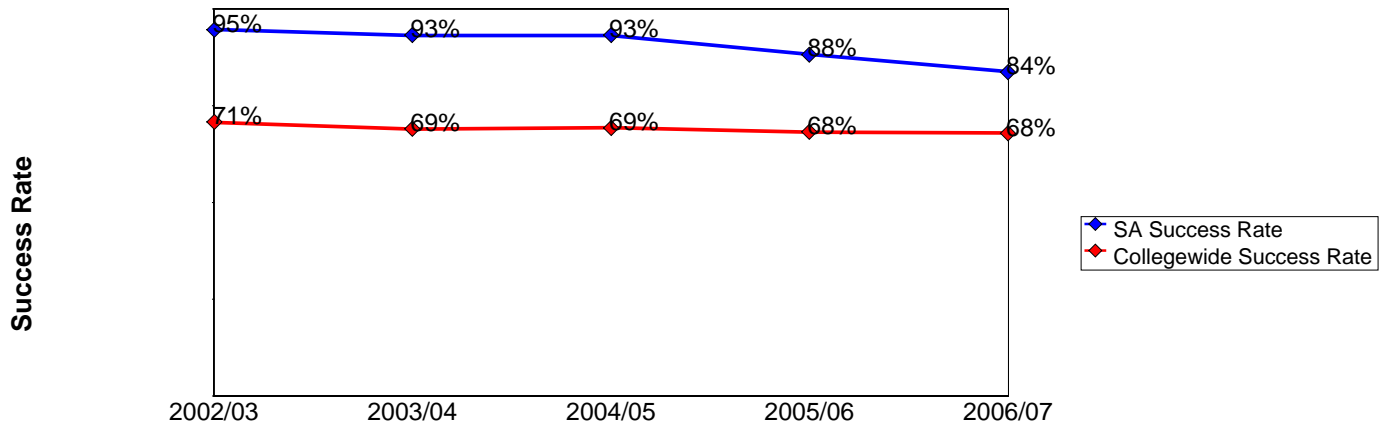
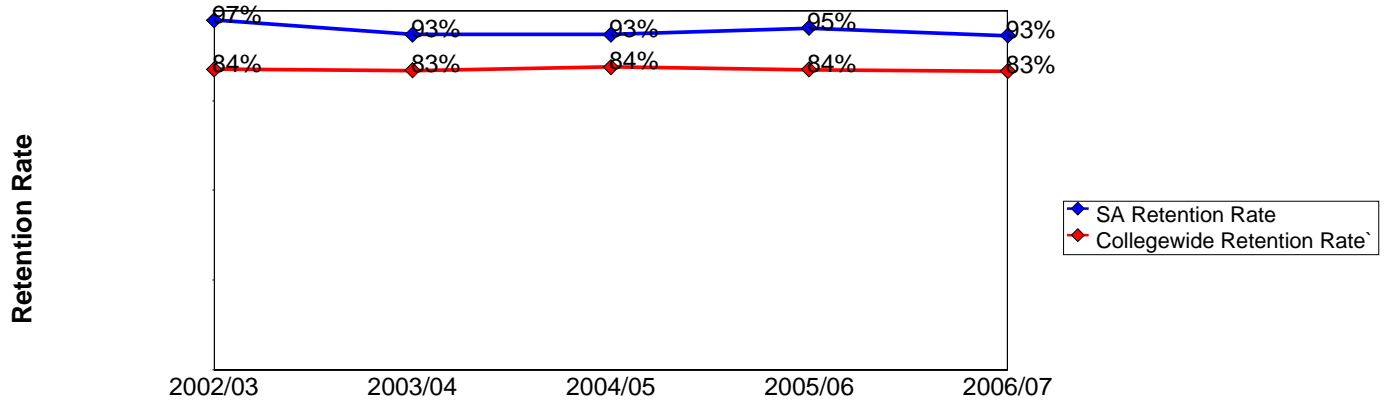
	Spring 2004		Spring 2006		Spring 2007		Total SP04-SP07 and % Change SP06-SP07	
Continuing	17	89%	31	97%	37	97%	85	19%
First-Time	1	5%					1	
First-Time Transfer	1	5%			1	3%	2	
Tech Prep Student			1	3%			1	-100%
Total	19	100%	32	100%	38	100%	89	19%

Educational Goal

	Spring 2004		Spring 2006		Spring 2007		Total SP04-SP07 and % Change SP06-SP07	
AA/AS & Transfer	16	84%	17	53%	28	74%	61	65%
AA/AS w/o Transfer	1	5%	1	3%	1	3%	3	0%
Transfer w/o AA/AS			7	22%			7	-100%
Acquire Job Skills	1	5%			1	3%	2	
Educational Development					2	5%	2	
Undecided	1	5%	7	22%	5	13%	13	-29%
Update Job Skills					1	3%	1	
Total	19	100%	32	100%	38	100%	89	19%

**Scholar Athlete Overall Success and Retention
2002/03 to 2006/07**

	Head Count	Retention Count	Retention Rate	Success Count	Success Rate
2002/03	38	37	97%	36	95%
2003/04	30	28	93%	28	93%
2004/05	30	28	93%	28	93%
2005/06	103	98	95%	91	88%
2006/07	130	121	93%	109	84%



Source: SMCCD Data Warehouse

Retention Count: Number of students with A,B,C,D,F,CR,NC, I grades.

Retention Rate: The percentage of students who complete a course with a grade of A,B,C,D,F,CR,NC, I out of total enrollments.

Success Count: Number of students with A,B,C,CR grades.

Success Rate: The percentage of students who complete a course with a grade of A,B,C,CR out of total enrollments.

**Scholar Athlete Success and Retention by Subject
2002/03 to 2006/07**

Career and Personal Development

	Head Count	Retention Count	Success Count	Retention Rate	Success Rate
2002/03	38	37	36	97%	95%
2003/04	30	28	28	93%	93%
2004/05	30	28	28	93%	93%
2005/06	38	36	36	95%	95%
2006/07	53	51	51	96%	96%

English

	Head Count	Retention Count	Success Count	Retention Rate	Success Rate
2005/06	65	62	55	95%	85%
2006/07	77	70	58	91%	75%

Source: SMCCD Data Warehouse

Retention Count: Number of students with A,B,C,D,F,CR,NC, I grades.

Retention Rate: The percentage of students who complete a course with a grade of A,B,C,D,F,CR,NC, I out of total enrollments.

Success Count: Number of students with A,B,C,CR grades.

Success Rate: The percentage of students who complete a course with a grade of A,B,C,CR out of total enrollments.

**Scholar Athlete Grades by Subject
2002/03 to 2006/07**

Career and Personal Development

		A		B		C		F		W	
650AC	2002/03	7	5%	18	100%	11	100%	1	100%	1	11%
	2003/04	12	8%							1	11%
650AE	2005/06	36	24%							2	22%
	2006/07	51	35%							2	22%
650JA	2003/04	16	10%							1	11%
650JD	2004/05	28	18%							2	22%

English

		A		B		C		D		F		W	
100AS	2005/06	10	55%	3	11%	11	15%	6	60%			2	13%
	2006/07	1	6%	7	25%	19	30%	1	10%	4	45%	5	55%
846AE	2005/06	4	22%	11	39%	16	24%			1	11%	1	11%
846AS	2006/07	3	17%	7	25%	21	31%	3	30%	4	44%	2	22%

Source: SMCCD Data Warehouse

Retention Count: Number of students with A,B,C,D,F,CR,NC, I grades.

Retention Rate: The percentage of students who complete a course with a grade of A,B,C,D,F,CR,NC, I out of total enrollments

Success Count: Number of students with A,B,C,CR grades.

Success Rate: The percentage of students who complete a course with a grade of A,B,C,CR out of total enrollments.