



2008




Puente

Learning Community Outcomes Report

Prepared by:

Office of Planning, Research & Institutional Effectiveness



Section Contents



Term Enrollment by Course

Term Enrollment by Demographic

Overall Success and Retention

Success and Retention by Subject

Grade Distribution by Subject



Puente Enrollment by Course: 2003/04 - 2007/08
Unduplicated Head Count

<u>Term Desc</u>	<u>Crn</u>	<u>Subject Code</u>	<u>Section</u>	<u>Course Title</u>	<u>Counts</u>
Fall 2003	80244	CRER	650AP	PUENTE Seminar	32
	80542	MATH	111AP	Elementary Algebra I-Puente	46
	89258	ENGL	846AP	Read & Write Connect	21
	89615	READ	846AP	Read & Write Conn. - Puente	11
	Total				110
Spring 2004	33320	MATH	112AP	Elementary Algebra II - PUENTE	32
	37022	ENGL	100AP	Composition	31
	Total				63
Fall 2004	80244	CRER	650AP	PUENTE Seminar	33
	80542	MATH	111AP	Elementary Algebra I-Puente	43
	89258	ENGL	846AP	Reading & Writing Connections	31
	Total				107
Spring 2005	33320	MATH	112AP	Elementary Algebra II - PUENTE	38
	37022	ENGL	100AP	Composition	28
	Total				66
Fall 2005	80244	CRER	650AP	PUENTE Seminar	33
	80542	MATH	111AP	Elementary Algebra I-Puente	44
	89258	ENGL	846AP	Read & Write Conn Puente	33
	Total				110
Spring 2006	33320	MATH	112AP	Elementary Algebra II - PUENTE	22
	37022	ENGL	100AP	Composition	26
	Total				48
Fall 2006	80542	MATH	111AP	Elementary Algebra I-Puente	9
	89258	ENGL	846AP	Read & Write Conn Puente	25
	90451	ENGL	110AP	Compos., Lit. & Crit. Thinking	28
	90602	COUN	100AP	College Success - Puente	25
	Total				87
Spring 2007	33320	MATH	112AP	Elementary Algebra II - PUENTE	8
	37022	ENGL	100AP	Composition	23
	Total				31
Fall 2007	80542	MATH	111AP	Elementary Algebra I-Puente	16
	89258	ENGL	846AP	Read & Write Conn Puente	38
	90451	ENGL	110AP	Comp, Lit. & Critical Thinking	35
	90602	COUN	100AP	College Success - Puente	37
	91047	SPAN	120AP	Advanced Elementary Spanish	5
	Total				131
Spring 2008	33320	MATH	112AP	Elementary Algebra II - PUENTE	8
	37022	ENGL	100AP	Composition	32
	41205	SPAN	130AP	Intermediate Spanish	3
	Total				43

Source: SMCCCD Data Warehouse

Puente Enrollment Report - Fall 2003 to 2007

Enrollment by Gender

	Fall 2003		Fall 2004		Fall 2005		Fall 2006		Fall 2007		Change FA06-FA07	5 Year Row Total & Average	
Female	39	53%	44	56%	37	51%	31	53%	33	40%	6%	184	50%
Male	34	47%	34	44%	35	49%	28	47%	48	58%	71%	179	49%
Unreported									2	2%		2	1%
Column Total	73	100%	78	100%	72	100%	59	100%	83	100%	41%	365	100%

Enrollment by Ethnicity

	Fall 2003		Fall 2004		Fall 2005		Fall 2006		Fall 2007		Change FA06-FA07	5 Year Row Total & Average	
African American	5	7%	7	9%	2	3%			4	5%		18	5%
Asian	6	8%	15	19%	6	8%	5	8%	11	13%	120%	43	12%
Filipino	13	18%	9	12%	11	15%	6	10%	3	4%	-50%	42	12%
Hispanic	40	55%	36	46%	39	54%	46	78%	56	67%	22%	217	59%
Other	2	3%			2	3%	1	2%	1	1%	0%	6	2%
White	6	8%	8	10%	10	14%			4	5%		28	8%
Unreported	1	1%	3	4%	2	3%	1	2%	4	5%	300%	11	3%
Column Total	73	100%	78	100%	72	100%	59	100%	83	100%	41%	365	100%

Enrollment by Age

	Fall 2003		Fall 2004		Fall 2005		Fall 2006		Fall 2007		Change FA06-FA07	5 Year Row Total & Average	
Under 18	2	3%	2	3%			1	2%	1	1%	0%	6	2%
Age 18-22	63	86%	57	73%	49	68%	45	76%	72	87%	60%	286	78%
Age 23-28	2	3%	9	12%	16	22%	9	15%	6	7%	-33%	42	12%
Age 29-39	4	5%	6	8%	3	4%	3	5%	2	2%	-33%	18	5%
Age 40-49	2	3%	2	3%	3	4%	1	2%	1	1%	0%	9	2%
Age 50-59			1	1%	1	1%						2	1%
Age 60+			1	1%					1	1%		2	1%
Column Total	73	100%	78	100%	72	100%	59	100%	83	100%	41%	365	100%

Enrollment by Status

	Fall 2003		Fall 2004		Fall 2005		Fall 2006		Fall 2007		Change FA06-FA07	5 Year Row Total & Average	
Continuing	31	42%	50	64%	28	39%	36	61%	64	77%	78%	209	57%
First-Time	32	44%	20	26%	29	40%	15	25%	13	16%	-13%	109	30%
First-Time Transfer	3	4%	3	4%	3	4%	2	3%	3	4%	50%	14	4%
Returning	5	7%	4	5%	5	7%	4	7%	3	4%	-25%	21	6%
Returning Transfer	2	3%	1	1%	7	10%	2	3%			-100%	12	3%
Column Total	73	100%	78	100%	72	100%	59	100%	83	100%	41%	365	100%

Source: SMCCCD Data Warehouse

*Note: Counts and percents are based on census figures.

Enrollment by Units

	Fall 2003		Fall 2004		Fall 2005		Fall 2006		Fall 2007		Change FA06-FA07	5 Year Row Total & Average
Full-time									1	1%		1 0%
Part-time	73	100%	78	100%	72	100%	59	100%	82	99%	39%	364 100%
Column Total	73	100%	78	100%	72	100%	59	100%	83	100%	41%	365 100%

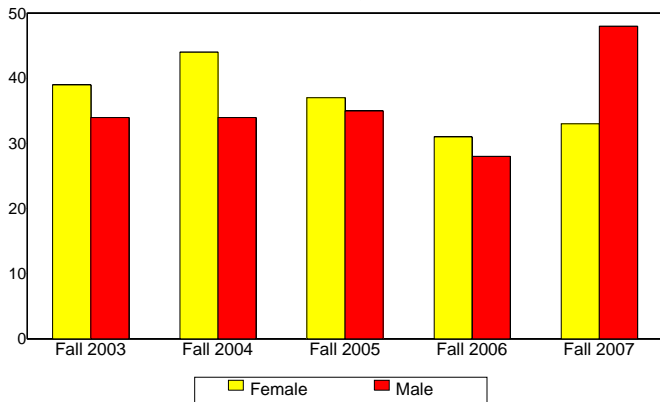
Enrollment by Course-Taking Pattern

	Fall 2003		Fall 2004		Fall 2005		Fall 2006		Fall 2007		Change FA06-FA07	5 Year Row Total & Average
Day	73	100%	78	100%	72	100%	59	100%	83	100%	41%	365 100%
Column Total	73	100%	78	100%	72	100%	59	100%	83	100%	41%	365 100%

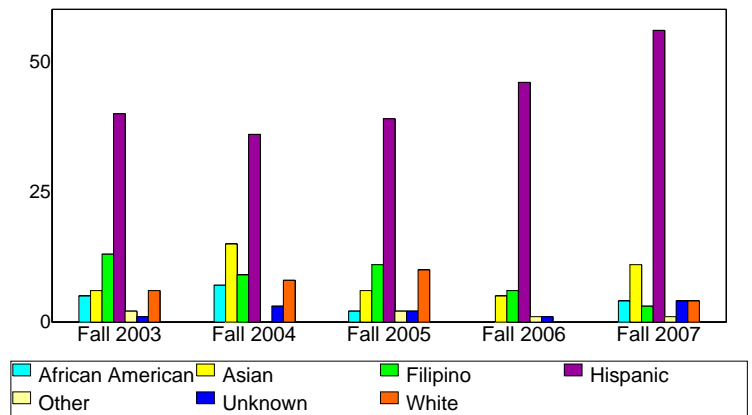
Enrollment by Educational Goal

	Fall 2003		Fall 2004		Fall 2005		Fall 2006		Fall 2007		Change FA06-FA07	5 Year Row Total & Average
Transfer	51	70%	46	59%	52	72%	48	81%	55	66%	15%	252 69%
AA/AS w/o Transfer	7	10%	10	13%	7	10%	2	3%	3	4%	50%	29 8%
Acquire/Update Job Skills			1	1%	3	4%	1	2%	2	2%	100%	7 2%
Certificate w/o Transfer	1	1%	2	3%	2	3%			1	1%		6 2%
Complete HS Credits	1	1%			1	1%						2 1%
Educational Development	1	1%	4	5%	2	3%	2	3%	3	4%	50%	12 3%
Undecided	12	16%	15	19%	5	7%	6	10%	7	8%	17%	45 12%
Unreported									12	14%		12 3%
Column Total	73	100%	78	100%	72	100%	59	100%	83	100%	41%	365 100%

Enrollment by Gender



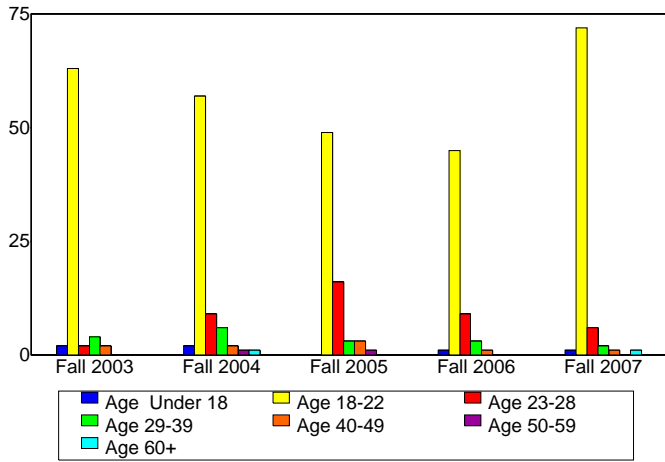
Enrollment by Ethnicity



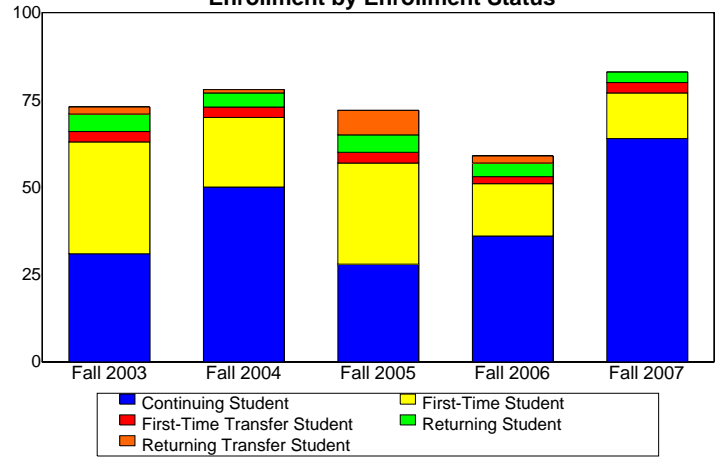
Source: SMCCCD Data Warehouse

*Note: Counts and percents are based on census figures.

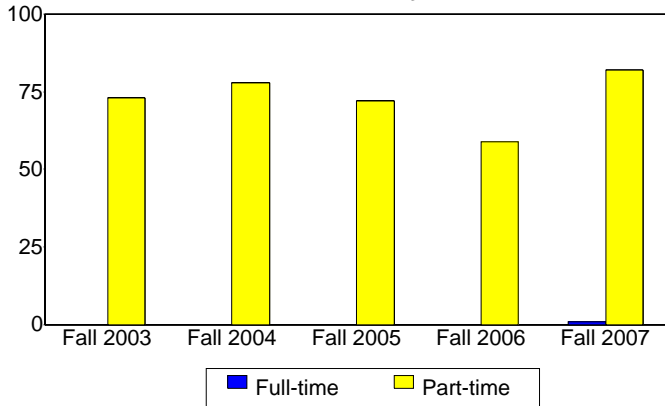
Enrollment by Student Age



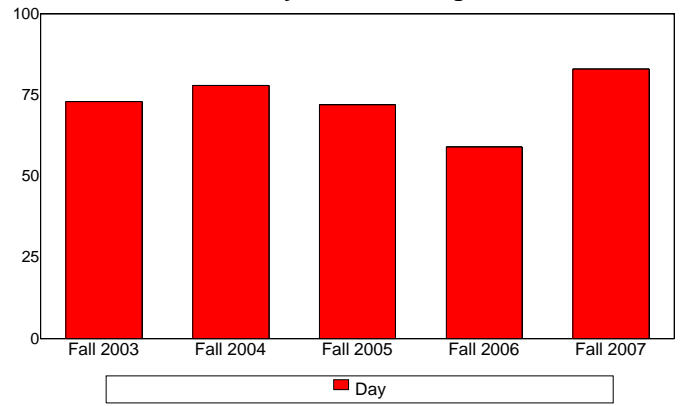
Enrollment by Enrollment Status



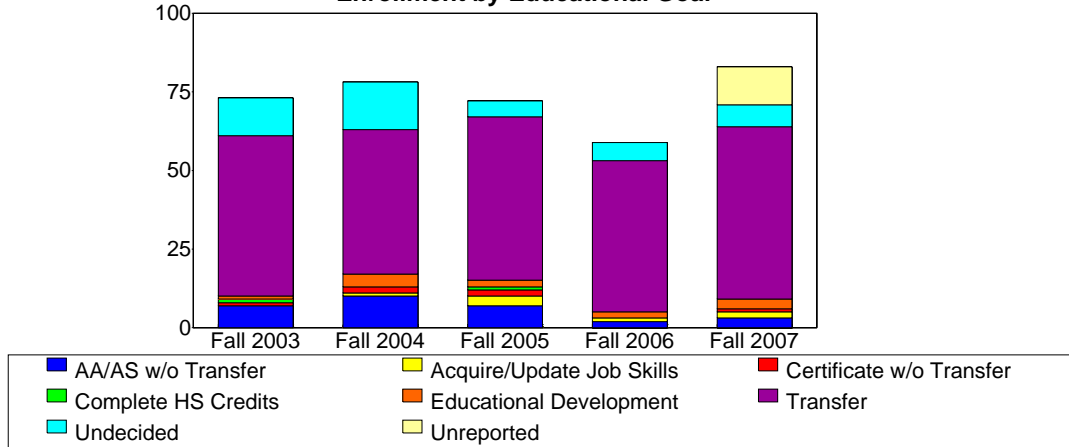
Enrollment by Units



Enrollment by Course-Taking Pattern



Enrollment by Educational Goal



Source: SMCCCD Data Warehouse

Puente Enrollment Report - Spring 2004 to 2008

Enrollment by Gender

	Spring 2004		Spring 2005		Spring 2006		Spring 2007		Spring 2008		Change SP07-SP08	5 Year Row Total & Average	
Female	40	66%	40	64%	23	49%	16	50%	17	40%	6%	136	54%
Male	18	34%	24	34%	23	51%	15	50%	21	58%	40%	101	45%
Unreported			1	2%					1	2%		2	1%
Column Total	58	100%	65	100%	46	100%	31	100%	39	100%	26%	239	100%

Enrollment by Ethnicity

	Spring 2004		Spring 2005		Spring 2006		Spring 2007		Spring 2008		Change SP07-SP08	5 Year Row Total & Average	
African American	3	7%	2	2%	1	2%	1	3%			-100%	7	3%
Asian	2	2%	8	12%	6	14%	4	13%	1	4%	-75%	21	9%
Filipino	9	16%	6	8%	5	11%	3	9%	1	2%	-67%	24	9%
Hispanic	33	56%	28	41%	27	56%	23	75%	33	84%	43%	144	62%
Native American	2	4%	1	0%								3	1%
White	6	8%	15	27%	4	9%			3	8%		28	11%
Other	1	2%	1	2%	3	7%						5	2%
Unreported	2	4%	4	8%					1	2%		7	3%
Column Total	58	100%	65	100%	46	100%	31	100%	39	100%	26%	239	100%

Enrollment by Age

	Spring 2004		Spring 2005		Spring 2006		Spring 2007		Spring 2008		Change SP07-SP08	5 Year Row Total & Average	
Under 18			2	4%								2	1%
Age 18-22	45	78%	47	76%	38	82%	29	94%	32	89%	10%	191	83%
Age 23-28	7	15%	3	6%	6	14%	1	3%	6	10%	500%	23	10%
Age 29-39	3	5%	4	6%	1	2%	1	3%	1	0%	0%	10	3%
Age 40-49	2	2%	7	4%	1	2%						10	2%
Age 50-59	1	0%	1	2%								2	0%
Age 60+			1	2%								1	0%
Column Total	58	100%	65	100%	46	100%	31	100%	39	100%	26%	239	100%

Enrollment by Status

	Spring 2004		Spring 2005		Spring 2006		Spring 2007		Spring 2008		Change SP07-SP08	5 Year Row Total & Average	
Continuing	57	98%	64	98%	43	93%	26	82%	38	98%	46%	228	95%
Currently K-12									1	2%		1	0%
First-Time					2	5%	2	9%			-100%	4	2%
First-Time Transfer							2	6%			-100%	2	1%
Returning			1	2%	1	2%	1	3%			-100%	3	1%
Returning Transfer	1	2%										1	0%
Column Total	58	100%	65	100%	46	100%	31	100%	39	100%	26%	239	100%

Source: SMCCCD Data Warehouse

*Note: Counts and percents are based on census figures.

Enrollment by Units

	Spring 2004		Spring 2005		Spring 2006		Spring 2007		Spring 2008		Change SP07-SP08	5 Year Row Total & Average	
Part-time	58	100%	65	100%	46	100%	31	100%	39	100%	26%	239	100%
Column Total	58	100%	65	100%	46	100%	31	100%	39	100%	26%	239	100%

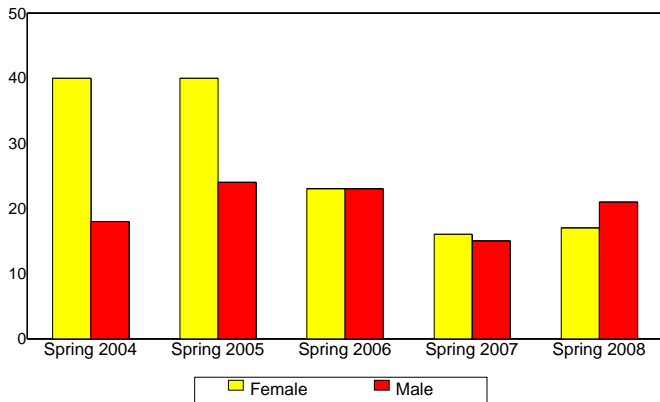
Enrollment by Course-Taking Pattern

	Spring 2004		Spring 2005		Spring 2006		Spring 2007		Spring 2008		Change SP07-SP08	5 Year Row Total & Average	
Day	58	100%	65	100%	46	100%	31	100%	39	100%	26%	239	100%
Column Total	58	100%	65	100%	46	100%	31	100%	39	100%	26%	239	100%

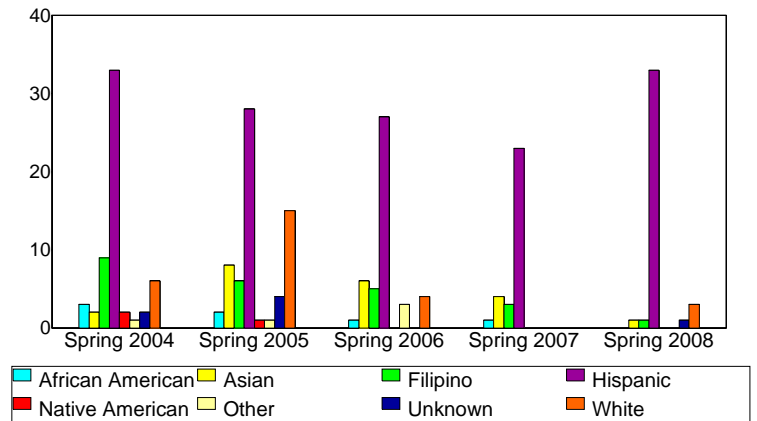
Enrollment by Educational Goal

	Spring 2004		Spring 2005		Spring 2006		Spring 2007		Spring 2008		Change SP07-SP08	5 Year Row Total & Average	
Transfer	48	84%	46	68%	32	70%	27	85%	25	68%	-7%	178	74%
AA/AS w/o Transfer	1	0%	6	10%	4	7%	2	6%	1	2%	-50%	14	5%
Acquire/Update Job Skills			1	0%					1	2%		2	0%
Certificate w/o Transfer					1	2%						1	0%
Complete HS Credits					1	2%						1	0%
Educational Development	1	2%	2	4%	1	2%			1	2%		5	2%
Undecided	8	14%	10	18%	7	16%	2	9%	2	6%	0%	29	13%
Unreported									9	20%		9	5%
Column Total	58	100%	65	100%	46	100%	31	100%	39	100%	26%	239	100%

Enrollment by Gender



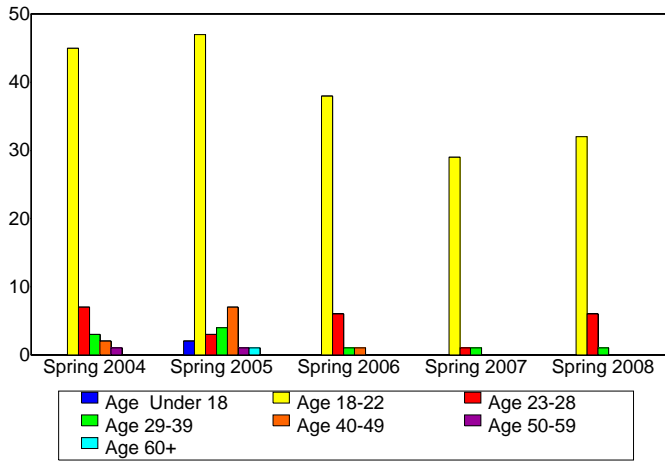
Enrollment by Ethnicity



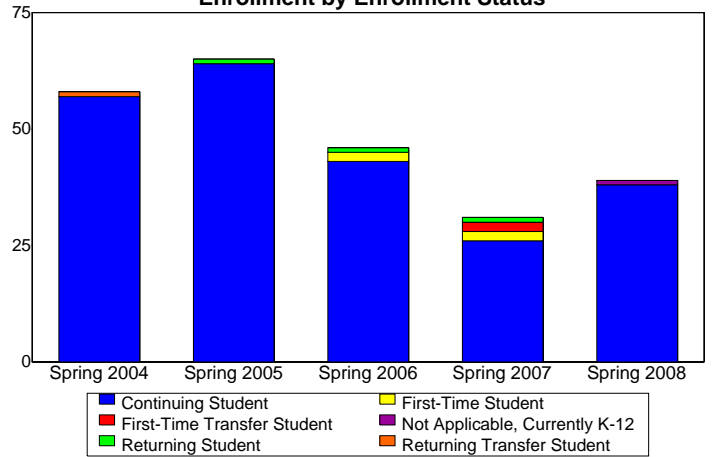
Source: SMCCCD Data Warehouse

*Note: Counts and percents are based on census.

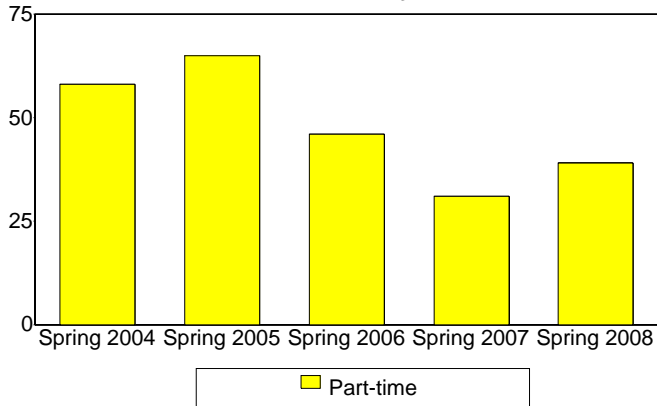
Enrollment by Student Age



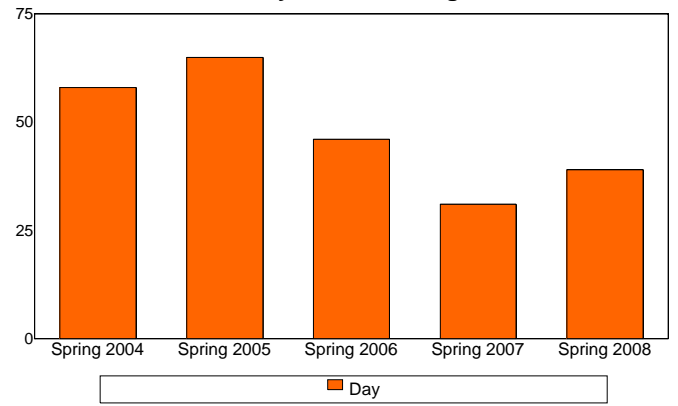
Enrollment by Enrollment Status



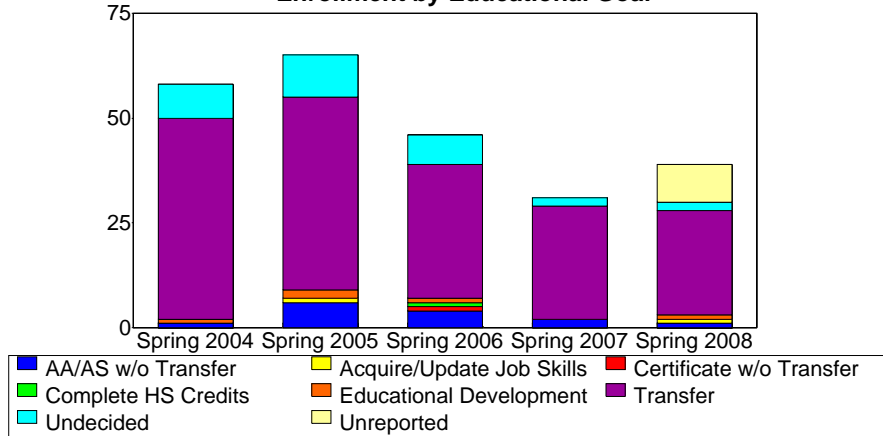
Enrollment by Units



Enrollment by Course-Taking Pattern



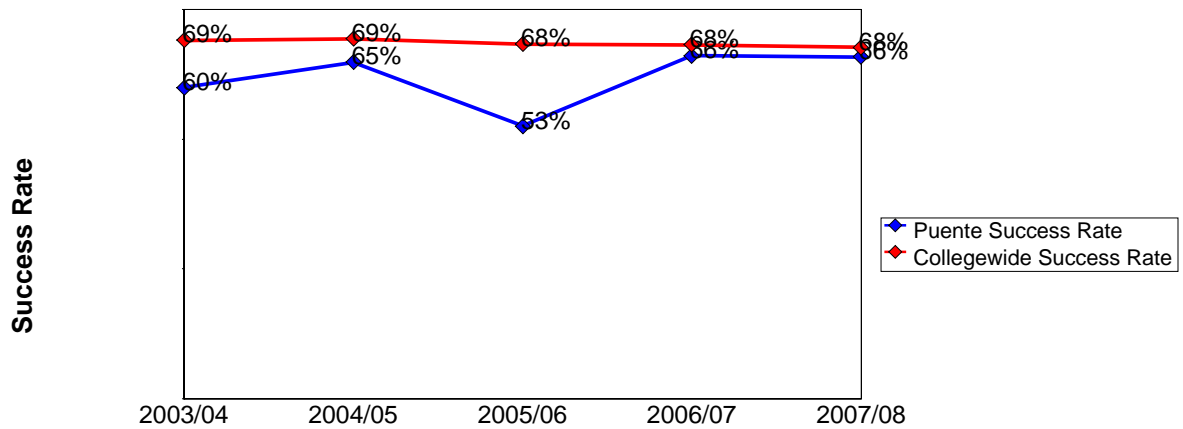
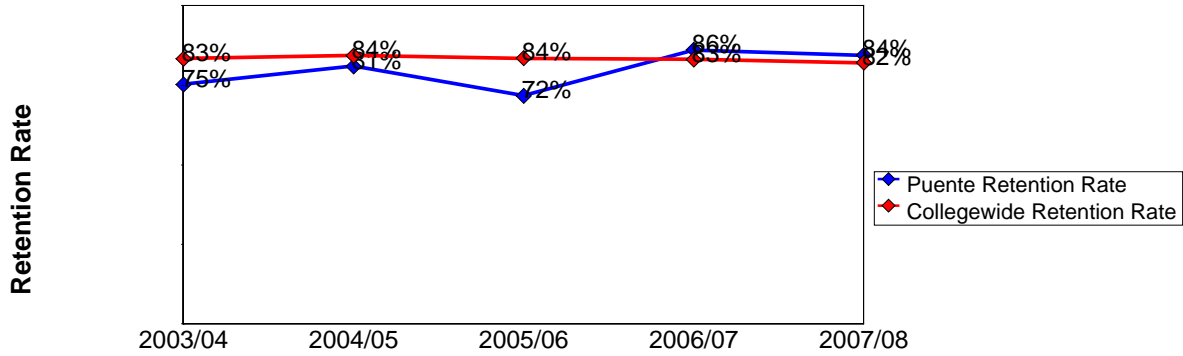
Enrollment by Educational Goal



Source: SMCCCD Data Warehouse

**Puente Overall Success and Retention
2003/04 to 2007/08**

	Head Count	Retention Count	Retention Rate	Success Count	Success Rate
2003/04	170	128	75%	102	60%
2004/05	168	136	81%	109	65%
2005/06	156	112	72%	82	53%
2006/07	115	99	86%	76	66%
2007/08	173	146	84%	114	66%



Source: SMCCCD Data Warehouse

Retention Count: Number of students with A,B,C,D,F,CR,NC, I grades.

Retention Rate: The percentage of students who complete a course with a grade of A,B,C,D,F,CR,NC, I out of total enrollments.

Success Count: Number of students with A,B,C,CR grades.

Success Rate: The percentage of students who complete a course with a grade of A,B,C,CR out of total enrollments.

**Puente Success and Retention by Subject
2003/04 to 2007/08**

Career and Personal Development

	Head Count	Retention Count	Retention Rate	Success Count	Success Rate
2003/04	32	27	84%	25	78%
2004/05	32	27	84%	23	72%
2005/06	33	25	76%	15	45%

Counseling

	Head Count	Retention Count	Retention Rate	Success Count	Success Rate
2006/07	25	20	80%	11	44%
2007/08	37	37	100%	28	76%

English

	Head Count	Retention Count	Retention Rate	Success Count	Success Rate
2003/04	52	45	87%	37	71%
2004/05	59	53	90%	49	83%
2005/06	60	48	80%	39	65%
2006/07	75	68	91%	57	76%
2007/08	105	86	82%	71	68%

Math

	Head Count	Retention Count	Retention Rate	Success Count	Success Rate
2003/04	75	47	63%	34	45%
2004/05	77	56	73%	37	48%
2005/06	63	39	62%	28	44%
2006/07	15	11	73%	8	53%
2007/08	24	18	75%	10	42%

Reading

	Head Count	Retention Count	Retention Rate	Success Count	Success Rate
2003/04	11	9	82%	6	55%

Spanish

	Head Count	Retention Count	Retention Rate	Success Count	Success Rate
2007/08	7	5	71%	5	71%

Source: SMCCCD Data Warehouse

Retention Count: Number of students with A,B,C,D,F,CR,NC, I grades.

Retention Rate: The percentage of students who complete a course with a grade of A,B,C,D,F,CR,NC, I out of total enrollments.

Success Count: Number of students with A,B,C,CR grades.

Success Rate: The percentage of students who complete a course with a grade of A,B,C,CR out of total enrollments.

**Puente Grades by Subject
2003/04 to 2007/08**

Career and Personal Development

		A		B		C		D		F		W	
650AP	2003/04	15	47%	6	19%	4	13%	2	6%			5	16%
	2004/05	14	44%	7	22%	2	6%	2	6%	2	6%	5	16%
	2005/06	8	28%	5	17%	2	7%	3	10%	3	10%	8	28%

Counseling

		A		B		C		CR		D		F		I		W		
100AP	2006/07	3	12%	7	28%			1	4%	7	28%	2	8%				5	20%
	2007/08	12	32%	11	30%	5	14%			3	8%	4	11%	2	5%			

Math

		A		B		C		D		F		W	
111AP	2003/04	1	2%	8	19%	12	28%	3	7%	7	16%	12	28%
	2004/05	2	5%	8	20%	9	23%	7	18%	5	13%	9	23%
	2005/06	2	5%	9	21%	8	19%	3	7%	6	14%	14	33%
	2006/07			1	11%	2	22%	1	11%	1	11%	4	44%
	2007/08	1	6%	1	6%	6	38%	3	19%	3	19%	2	13%
112AP	2003/04	2	6%	5	16%	6	19%	2	6%	1	3%	16	50%
	2004/05	1	3%	6	16%	11	30%	4	11%	3	8%	12	32%
	2005/06			3	14%	6	29%			2	10%	10	48%
	2006/07	1	17%			4	67%	1	17%				
	2007/08			1	13%	1	13%			2	25%	4	50%

English

		A		B		C		D		F		I		W	
100AP	2003/04	3	10%	10	32%	9	29%	3	10%					6	19%
	2004/05	1	4%	13	46%	12	43%							2	7%
	2005/06	1	4%	5	19%	12	44%	4	15%	2	7%			3	11%
	2006/07			5	22%	13	57%	2	9%			1	4%	2	9%
	2007/08	7	22%	6	19%	9	28%			4	13%			6	19%
110AP	2006/07	2	7%	12	44%	10	37%	2	7%	1	4%				
	2007/08	8	23%	7	20%	8	23%	1	3%			1	3%	10	29%
846AP	2003/04	3	14%	6	29%	6	29%	5	24%					1	5%
	2004/05	1	3%	12	39%	10	32%	4	13%					4	13%
	2005/06			11	33%	10	30%	3	9%					9	27%
	2006/07	1	4%	5	20%	9	36%	5	20%					5	20%
	2007/08	2	5%	8	21%	16	42%			1	3%	8	21%	3	8%

Reading

		A		B		C		D		W	
846AP	2003/04	1	9%	4	36%	1	9%	3	27%	2	18%

Spanish

		A		C		W	
120AP	2007/08	2	50%	1	25%	1	25%
130AP	2007/08	2	67%			1	33%

Source: SMCCCD Data Warehouse

Retention Count: Number of students with A,B,C,D,F,CR,NC, I grades.

Retention Rate: The percentage of students who complete a course with a grade of A,B,C,D,F,CR,NC, I out of total enrollment.

Success Count: Number of students with A,B,C,CR grades.

Success Rate: The percentage of students who complete a course with a grade of A,B,C,CR out of total enrollments.