



2007




Puente

Learning Community Outcomes Report

Prepared by:

Office of Planning, Research & Institutional Effectiveness



Section Contents



Term Enrollment by Course

Term Enrollment by Demographic

Overall Success and Retention

Success and Retention by Subject

Grade Distribution by Subject



**Puente Enrollment by Course: 2003/04 to 2006/07
Unduplicated Headcount**

<u>Term Desc</u>	<u>Crn</u>	<u>Subject Code</u>	<u>Section</u>	<u>Course Title</u>	<u>Counts</u>
Fall 2003	80244	CRER	650AP	PUENTE Seminar	32
	80542	MATH	111AP	Elementary Algebra I-Puente	43
	89258	ENGL	846AP	Read & Write Connect	21
	89615	READ	846AP	Read & Write Conn. - Puente	11
	Total				107
Spring 2004	33320	MATH	112AP	Elementary Algebra II - PUENTE	32
	37022	ENGL	100AP	Composition	31
	Total				63
Fall 2004	80244	CRER	650AP	PUENTE Seminar	33
	80542	MATH	111AP	Elementary Algebra I-Puente	40
	89258	ENGL	846AP	Reading & Writing Connections	31
	Total				104
Spring 2005	33320	MATH	112AP	Elementary Algebra II - PUENTE	39
	37022	ENGL	100AP	Composition	28
	Total				67
Fall 2005	80244	CRER	650AP	PUENTE Seminar	33
	80542	MATH	111AP	Elementary Algebra I-Puente	44
	89258	ENGL	846AP	Read & Write Conn Puente	33
	Total				110
Spring 2006	33320	MATH	112AP	Elementary Algebra II - PUENTE	22
	37022	ENGL	100AP	Composition	26
	Total				48
Fall 2006	80542	MATH	111AP	Elementary Algebra I-Puente	9
	89258	ENGL	846AP	Read & Write Conn Puente	25
	90451	ENGL	110AP	Compos., Lit. & Crit. Thinking	27
	90602	COUN	100AP	College Success - Puente	25
	Total				86
Spring 2007	33320	MATH	112AP	Elementary Algebra II - PUENTE	8
	37022	ENGL	100AP	Composition	23
	Total				31
Fall 2007	80542	MATH	111AP	Elementary Algebra I-Puente	15
	89258	ENGL	846AP	Read & Write Conn Puente	38
	90451	ENGL	110AP	Comp, Lit. & Critical Thinking	35
	90602	COUN	100AP	College Success - Puente	37
	91047	SPAN	120AP	Advanced Elementary Spanish	5
	Total				130

**Puente Demographics
Fall 2003 to Fall 2007**

Gender	Fall 2003		Fall 2004		Fall 2005		Fall 2006		Fall 2007		Total FA03-FA07 and % Change FA06-FA07	
	Female	39	53%	44	56%	37	51%	31	53%	33	40%	184
Male	34	47%	34	44%	35	49%	28	47%	48	58%	179	71%
Unreported									2	2%	2	
Total	73	100%	78	100%	72	100%	59	100%	83	100%	365	41%

Age	Fall 2003		Fall 2004		Fall 2005		Fall 2006		Fall 2007		Total FA03-FA07 and % Change FA06-FA07	
	Under 18	2	3%	2	3%			1	2%	1	1%	6
Age 18-22	63	86%	57	73%	49	68%	45	76%	72	87%	286	60%
Age 23-28	2	3%	9	12%	16	22%	9	15%	6	7%	42	-33%
Age 29-39	4	5%	6	8%	3	4%	3	5%	2	2%	18	-33%
Age 40-49	2	3%	2	3%	3	4%	1	2%	1	1%	9	0%
Age 50-59			1	1%	1	1%					2	
Age 60+			1	1%					1	1%	2	
Total	73	100%	78	100%	72	100%	59	100%	83	100%	365	41%

Ethnicity	Fall 2003		Fall 2004		Fall 2005		Fall 2006		Fall 2007		Total FA03-FA07 and % Change FA06-FA07	
	African American	5	7%	7	9%	2	3%			4	5%	18
Asian	6	8%	16	21%	6	8%	5	8%	11	13%	44	120%
Filipino	13	18%	8	10%	11	15%	6	10%	3	4%	41	-50%
Hispanic	40	55%	36	46%	39	54%	46	78%	56	67%	217	22%
White	6	8%	8	10%	10	14%			4	5%	28	
Other	2	3%			2	3%	1	2%	1	1%	6	0%
Unreported	1	1%	3	4%	2	3%	1	2%	4	5%	11	300%
Total	73	100%	78	100%	72	100%	59	100%	83	100%	365	41%

Enrollment Status	Fall 2003		Fall 2004		Fall 2005		Fall 2006		Fall 2007		Total FA03-FA07 and % Change FA06-FA07	
	Continuing	31	42%	50	64%	28	39%	36	61%	64	77%	209
First-Time	32	44%	20	26%	29	40%	15	25%	13	16%	109	-13%
First-Time Transfer	3	4%	3	4%	3	4%	2	3%	3	4%	14	50%
Returning	5	7%	4	5%	5	7%	4	7%	3	4%	21	-25%
Returning Transfer	2	3%	1	1%	7	10%	2	3%			12	-100%
Total	73	100%	78	100%	72	100%	59	100%	83	100%	365	41%

Educational Goal	Fall 2003		Fall 2004		Fall 2005		Fall 2006		Fall 2007		Total FA03-FA07 and % Change FA06-FA07	
	AA/AS & Transfer	46	63%	38	49%	44	61%	42	71%	42	59%	212
AA/AS w/o Transfer	7	10%	10	13%	7	10%	2	3%	3	4%	29	50%
Certificate w/o Transfer	1	1%	2	3%	2	3%			1	1%	6	
Transfer w/o AA/AS	5	7%	8	10%	8	11%	6	10%	13	18%	40	117%
Acquire Job Skills			1	1%	2	3%	1	2%	1	1%	5	0%
Complete HS Credits	1	1%			1	1%					2	
Educational Development	1	1%	4	5%	2	3%	2	3%	3	4%	12	50%
Undecided	12	16%	15	19%	5	7%	6	10%	7	10%	45	17%
Update Job Skills					1	1%			1	1%	2	
Total	73	100%	78	100%	72	100%	59	100%	71	100%	353	20%

**Puente Demographics
Spring 2004 to Spring 2007**

Gender	Spring 2004		Spring 2005		Spring 2006		Spring 2007		Total SP04-SP07 and % Change SP06-SP07	
Female	40	69%	41	62%	23	50%	16	52%	120	-30%
Male	18	31%	24	36%	23	50%	15	48%	80	-35%
Unreported			1	2%					1	
Total	58	100%	66	100%	46	100%	31	100%	201	-33%

Age	Spring 2004		Spring 2005		Spring 2006		Spring 2007		Total SP04-SP07 and % Change SP06-SP07	
Under 18			2	3%					2	
Age 18-22	45	78%	47	71%	38	83%	29	94%	159	-24%
Age 23-28	7	12%	3	5%	6	13%	1	3%	17	-83%
Age 29-39	3	5%	5	8%	1	2%	1	3%	10	0%
Age 40-49	2	3%	7	11%	1	2%			10	-100%
Age 50-59	1	2%	1	2%					2	
Age 60+			1	2%					1	
Total	58	100%	66	100%	46	100%	31	100%	201	-33%

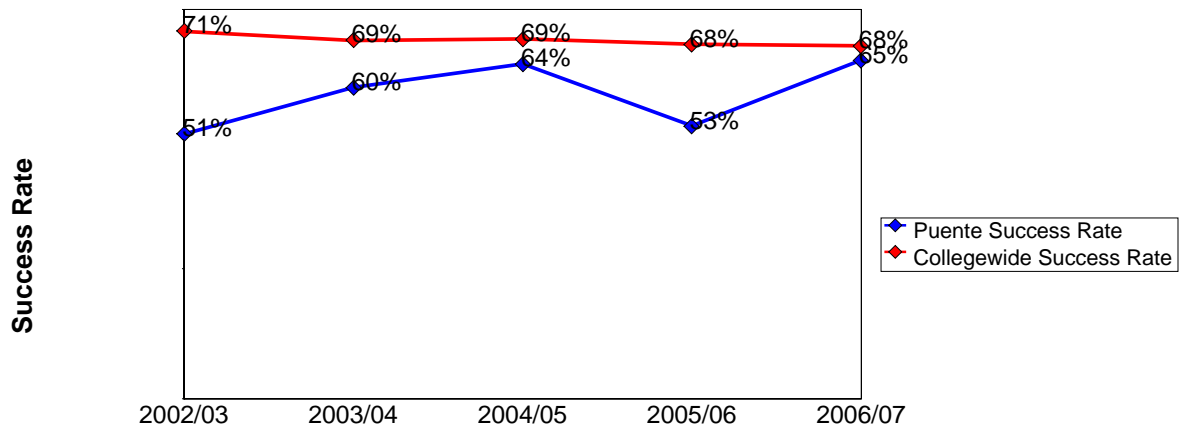
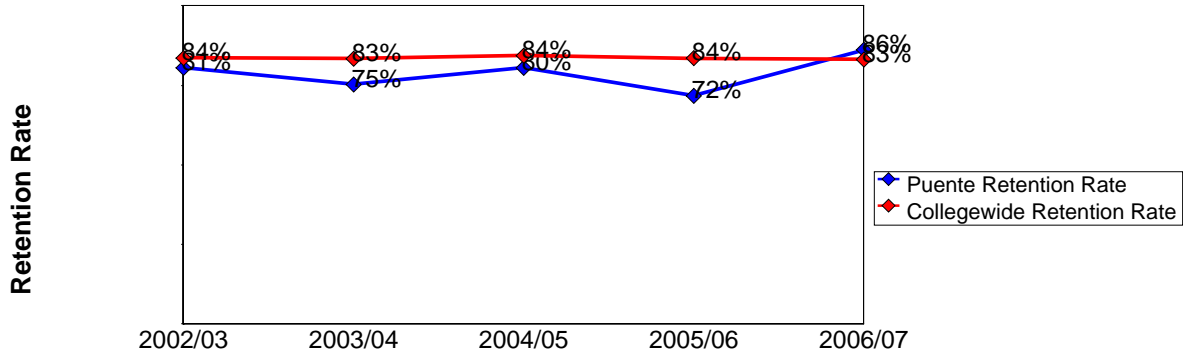
Ethnicity	Spring 2004		Spring 2005		Spring 2006		Spring 2007		Total SP04-SP07 and % Change SP06-SP07	
African American	3	5%	2	3%	1	2%	1	3%	7	0%
Asian	2	3%	8	12%	6	13%	4	13%	20	-33%
Filipino	9	16%	6	9%	5	11%	3	10%	23	-40%
Hispanic	33	57%	29	44%	27	59%	23	74%	112	-15%
Native American	2	3%	1	2%					3	
White	6	10%	15	23%	4	9%			25	-100%
Other	1	2%	1	2%	3	7%			5	-100%
Unreported	2	3%	4	6%					6	
Total	58	100%	66	100%	46	100%	31	100%	201	-33%

Enrollment Status	Spring 2004		Spring 2005		Spring 2006		Spring 2007		Total SP04-SP07 and % Change SP06-SP07	
Continuing	57	98%	65	98%	43	93%	26	84%	191	-40%
First-Time					2	4%	2	6%	4	0%
First-Time Transfer							2	6%	2	
Returning			1	2%	1	2%	1	3%	3	0%
Returning Transfer	1	2%							1	
Total	58	100%	66	100%	46	100%	31	100%	201	-33%

Educational Goal	Spring 2004		Spring 2005		Spring 2006		Spring 2007		Total SP04-SP07 and % Change SP06-SP07	
AA/AS & Transfer	42	72%	40	61%	30	65%	24	77%	136	-20%
AA/AS w/o Transfer	1	2%	7	11%	4	9%	2	6%	14	-50%
Certificate w/o Transfer					1	2%			1	-100%
Transfer w/o AA/AS	6	10%	6	9%	2	4%	3	10%	17	50%
Educational Development	1	2%	2	3%	1	2%			4	-100%
Undecided	8	14%	10	15%	7	15%	2	6%	27	-71%
Complete HS Credits					1	2%			1	-100%
Update Job Skills			1	2%					1	
Total	58	100%	66	100%	46	100%	31	100%	201	-33%

**Puente Overall Success and Retention
2002/03 to 2006/07**

	Head Count	Retention Count	Retention Rate	Success Count	Success Rate
2002/03	149	120	81%	76	51%
2003/04	170	128	75%	102	60%
2004/05	169	136	80%	109	64%
2005/06	156	112	72%	82	53%
2006/07	115	99	86%	75	65%



Source: SMCCD Data Warehouse

Retention Count: Number of students with A,B,C,D,F,CR,NC, I grades.

Retention Rate: The percentage of students who complete a course with a grade of A,B,C,D,F,CR,NC, I out of total enrollments.

Success Count: Number of students with A,B,C,CR grades.

Success Rate: The percentage of students who complete a course with a grade of A,B,C,CR out of total enrollments.

**Puente Success and Retention by Subject
2002/03 to 2006/07**

Career and Personal Development

	Head Count	Retention Count	Retention Rate	Success Count	Success Rate
2002/03	18	16	89%	7	39%
2003/04	32	27	84%	25	78%
2004/05	32	27	84%	23	72%
2005/06	33	25	76%	15	45%

Counseling

	Head Count	Retention Count	Retention Rate	Success Count	Success Rate
2006/07	25	20	80%	10	40%

English

	Head Count	Retention Count	Retention Rate	Success Count	Success Rate
2002/03	47	41	87%	34	72%
2003/04	52	45	87%	37	71%
2004/05	59	53	90%	49	83%
2005/06	60	48	80%	39	65%
2006/07	75	68	91%	57	76%

MATH

	Head Count	Retention Count	Retention Rate	Success Count	Success Rate
2002/03	84	63	75%	35	42%
2003/04	75	47	63%	34	45%
2004/05	78	56	72%	37	47%
2005/06	63	39	62%	28	44%
2006/07	15	11	73%	8	53%

Reading

	Head Count	Retention Count	Retention Rate	Success Count	Success Rate
2003/04	11	9	82%	6	55%

Source: SMCCD Data Warehouse

Retention Count: Number of students with A,B,C,D,F,CR,NC, I grades.

Retention Rate: The percentage of students who complete a course with a grade of A,B,C,D,F,CR,NC, I out of total enrollments.

Success Count: Number of students with A,B,C,CR grades.

Success Rate: The percentage of students who complete a course with a grade of A,B,C,CR out of total enrollments.

**Puente Grades by Subject
2002/03 to 2006/07**

Career and Personal Development

		A		B		C		D		F		I		W	
650AP	2002/03	5	28%	1	6%	1	6%			4	22%	5	28%	2	11%
	2003/04	15	47%	6	19%	4	13%	2	6%					5	16%
	2004/05	14	44%	7	22%	2	6%	2	6%	2	6%			5	16%
	2005/06	8	28%	5	17%	2	7%	3	10%	3	10%			8	28%

Counseling

		A		B		CR		D		F		I		W	
100AP	2006/07	3	12%	6	24%	1	4%	5	20%	2	8%	3	12%	5	20%

Math

		A		B		C		D		F		W	
111AP	2002/03	1	2%	4	8%	14	29%	9	19%	7	15%	13	27%
	2003/04	1	2%	8	19%	12	28%	3	7%	7	16%	12	28%
	2004/05	2	5%	8	20%	9	23%	7	18%	5	13%	9	23%
	2005/06	2	5%	9	21%	8	19%	3	7%	6	14%	14	33%
	2006/07			1	11%	2	22%	1	11%	1	11%	4	44%
112AP	2002/03	1	3%	7	19%	8	22%	7	19%	5	14%	8	22%
	2003/04	2	6%	5	16%	6	19%	2	6%	1	3%	16	50%
	2004/05	1	3%	6	16%	11	29%	4	11%	3	8%	13	34%
	2005/06			3	14%	6	29%			2	10%	10	48%
	2006/07	1	17%			4	67%	1	17%				

English

		A		B		C		D		F		I		W	
100AP	2002/03	2	7%	5	17%	15	52%	3	10%					4	14%
	2003/04	3	10%	10	32%	9	29%	3	10%					6	19%
	2004/05	1	4%	13	46%	12	43%							2	7%
	2005/06	1	4%	5	19%	12	44%	4	15%	2	7%			3	11%
	2006/07			5	22%	13	57%	2	9%			1	4%	2	9%
110AP	2006/07	2	7%	12	44%	10	37%	2	7%	1	4%				
836AP	2002/03			3	17%	9	50%	3	17%			1	6%	2	11%
846AP	2003/04	3	14%	6	29%	6	29%	5	24%					1	5%
	2004/05	1	3%	12	39%	10	32%	4	13%					4	13%
	2005/06			11	33%	10	30%	3	9%					9	27%
	2006/07	1	4%	5	20%	9	36%	5	20%					5	20%

Reading

		A		B		C		D		W	
846AP	2003/04	1	9%	4	36%	1	9%	3	27%	2	18%

Source: SMCCD Data Warehouse

Retention Count: Number of students with A,B,C,D,F,CR,NC, I grades.

Retention Rate: The percentage of students who complete a course with a grade of A,B,C,D,F,CR,NC, I out of total enrollment.

Success Count: Number of students with A,B,C,CR grades.

Success Rate: The percentage of students who complete a course with a grade of A,B,C,CR out of total enrollments.