



2008




Honors Transfer

Learning Community Outcomes Report

Prepared by:

Office of Planning, Research & Institutional Effectiveness



Section Contents



Term Enrollment by Course

Term Enrollment by Demographic

Overall Success and Retention

Success and Retention by Subject

Grade Distribution by Subject



**Honors Transfer Program Enrollment by Course: 2003/04 - 2007/08
Unduplicated Head Count**

<u>Term Desc</u>	<u>Crn</u>	<u>Subject Code</u>	<u>Section</u>	<u>Course Title</u>	<u>Counts</u>
Fall 2003	80772	SPAN	130AA	Intermediate Spanish - Honors	4
	83877	ENGL	100AH	Composition - HONORS	26
	84374	ENGL	110JH	Comp, Lit. & Crit. Think Honor	11
	84877	ENGL	165AH	Crit. Think & Adv. Com -Honors	24
	88767	HIST	101AH	History Western Civ II -Honors	24
	88784	PSYC	100AH	General Psychology - Honors	29
	89249	MATH	251AH	Calc./Analytic Geom. I-Honors	11
	89298	BIOL	675AH	Honors Colloq. in Biology	15
	89310	CRER	650AH	Honors Seminar	23
	89586	PHYS	210AH	General Physics I-Honors	15
	89587	PHYS	211JH	General Phys I Calc Sup-Honors	5
	89640	MATH	241AH	Applied Calculus I-Honors	4
	89694	PSYC	690AH	Special Projects - Honors	1
	Total				192
Spring 2004	30296	ENGL	100AH	Composition - Honors	28
	30316	ENGL	110AH	Comp, Lit, Critical - Honors	21
	30685	PHIL	100JH	Intro to Philosophy - HONORS	22
	30760	SPAN	110AH	Elementary Spanish -Honors	26
	35380	MATH	251AH	Calc/Anal. Geom - Honors	1
	36562	SPCH	150AH	Communicate Across Cltrs-Honor	21
	37695	MUS.	202AH	Music Appreciation- Honors	23
	38083	PSYC	300AH	Social Psychology - hONORS	29
	38700	HIST	240AH	Ethnic Groups in CA - Honors	24
	38736	BIOL	675AH	Honors Colloq. in Biology	19
	38783	CRER	650AH	Honors Seminar	13
	38836	GEOL	210AH	General Geology - Honors	4
	39196	MATH	242AH	Applied Calculus II - Honors	9
	39363	PHYS	220AH	General Physics II - Honors	6
		Total			
Fall 2004	80765	SPAN	110AH	Elementary Spanish -Honors	13
	83877	ENGL	100AH	Composition - HONORS	21
	84877	ENGL	165AH	Crit. Think & Adv. Com -Honors	16
	89249	MATH	251AH	Calc./Analytic Geom. I-Honors	21
	89298	BIOL	675AH	Honors Colloq. in Biology	20
	89310	CRER	650AH	Honors Seminar	17
	89866	SPCH	100AH	Fundamentals of Speech-Honors	27
	89867	ART	102AH	History of Art II - Honors	15
	89879	MATH	200AH	Probability&Statistics-Honors	6
	89882	PHYS	270AH	Physics with Calc. III-Honors	7
	89884	ECON	100AH	Macro Economics - Honors	27
	89887	ANTH	110AH	Cultural Anthropology - Honors	26
	89902	HIST	201JH	United States History I-HONORS	27
		Total			

Source: SMCCCD Data Warehouse

Note: Counts exclude honors students enrolled in non-honors-specific courses. Low enrolled honors sections were offered in conjunction with a regular section of the same course.

**Honors Transfer Program Enrollment by Course: 2003/04 - 2007/08
Unduplicated Head Count**

<u>Term Desc</u>	<u>Crn</u>	<u>Subject Code</u>	<u>Section</u>	<u>Course Title</u>	<u>Counts</u>
Spring 2005	30296	ENGL	100AH	Composition - Honors	21
	30316	ENGL	110AH	Comp, Lit, Critical - Honors	24
	30708	PSYC	100AH	General Psychology - Honors	22
	30760	SPAN	120AH	Elementary Spanish -Honors	10
	35380	MATH	251AH	Calc/Anal. Geom - Honors	13
	37695	MUS.	202AH	Music Appreciation- Honors	15
	38700	HIST	240AH	Ethnic Groups in CA - Honors	22
	38736	BIOL	675AH	Honors Colloq. in Biology	22
	38836	GEOL	210AH	General Geology - Honors	5
	39196	MATH	242AH	Applied Calculus II - Honors	8
	39363	PHYS	220AH	General Physics II - Honors	5
	39585	MATH	200AH	Elem Probability&Stats-Honors	9
	39587	PHYS	221AH	Gen Phys II Calc Suplm-Honors	3
	39717	ENGL	100JH	Composition - Honors	7
		Total			
Fall 2005	80028	ART	105AH	Art of Asia/ Near East-Honors	29
	80765	SPAN	110AH	Elementary Spanish -Honors	2
	83877	ENGL	100AH	Composition - HONORS	28
	84324	HIST	240JH	Hist-Ethnic Groups of CA-Hon	26
	84877	ENGL	165AH	Crit. Think & Adv. Com -Honors	11
	88767	HIST	101AH	History Western Civ II -Honors	12
	88786	PHIL	100AH	Intro to Philosophy-Honors	24
	89112	ENGL	100JH	Composition - Honors	14
	89249	MATH	251AH	Calc./Analytic Geom. I-Honors	16
	89298	BIOL	675AH	Honors Colloq. in Biology	16
	89310	CRER	650AH	Honors Seminar	15
	89577	ANTH	125AH	Physical Anthropology - Honors	16
	89879	MATH	200AH	Probability&Statistics-Honors	11
	89882	PHYS	270AH	Physics with Calc. III-Honors	7
	89884	ECON	100AH	Macro Economics - Honors	24
	90081	GEOL	210AH	General Geology - Honors	6
	90082	SPCH	127AH	Argumentation Honors	21
	90085	MATH	252AH	Calculus/Analy Geom II-Honors	9
	90142	PHIL	680AH	Intro-ScientificReason.-Honors	5
	90154	ENGL	680AH	Honors Topic in Literature	1
90158	PHIL	680BH	Greek Myth,Fable&Legend-Honors	14	
	Total				307

Source: SMCCCD Data Warehouse

Note: Counts exclude honors students enrolled in non-honors-specific courses. Low enrolled honors sections were offered in conjunction with a regular section of the same course.

**Honors Transfer Program Enrollment by Course: 2003/04 - 2007/08
Unduplicated Head Count**

<u>Term Desc</u>	<u>Crn</u>	<u>Subject Code</u>	<u>Section</u>	<u>Course Title</u>	<u>Counts</u>	
Spring 2006	30296	ENGL	100AH	Composition - Honors	20	
	30316	ENGL	110AH	Comp, Lit, Critical - Honors	21	
	30760	SPAN	120AH	Elementary Spanish -Honors	9	
	35380	MATH	251AH	Calc/Anal. Geom - Honors	3	
	35545	PHIL	300AH	Intro to World Religions-Honor	27	
	37695	MUS.	202AH	Music Appreciation- Honors	9	
	38736	BIOL	675AH	Honors Colloq. in Biology	11	
	38836	GEOL	210AH	General Geology - Honors	9	
	39196	MATH	242AH	Applied Calculus II - Honors	6	
	39585	MATH	200AH	Elem Probability&Stats-Honors	5	
	39933	SPCH	100AH	Fundamentals of Speech - Honor	12	
	39967	ENGL	110JH	Comp, Lit, Crit Think - Honor	4	
	40030	CHEM	220AH	General Chemistry II - Honors	6	
	40032	PSYC	200AH	Developmental Psychology-Honor	23	
	40049	HIST	201JH	United States History I-Honors	24	
	40050	PHIL	320JH	Asian Philosophy-Honors	12	
	40074	ANTH	110AH	Cultural Anthropology-Honors	14	
	40136	MATH	252AH	Calc/Analytic Geom II - Honors	7	
		Total				222
	Fall 2006	80029	ART	115AH	Art, Music and Ideas-Honors	31
80600		MUS.	115AH	Music, Art and Ideas-Honors	13	
80765		SPAN	110AH	Elementary Spanish -Honors	12	
83877		ENGL	100AH	Composition - HONORS	24	
88767		HIST	101AH	History Western Civ II -Honors	16	
88786		PHIL	100AH	Intro to Philosophy-Honors	24	
89112		ENGL	100JH	Composition - Honors	18	
89125		ENGL	110AH	Comp, Lit. & Crit. Think/Honor	19	
89249		MATH	251AH	Calc./Analytic Geom. I-Honors	7	
89577		ANTH	125AH	Physical Anthropology - Honors	6	
89879		MATH	200AH	Probability&Statistics-Honors	6	
89882		PHYS	270AH	Physics with Calc. III-Honors	7	
89884		ECON	100AH	Macro Economics - Honors	29	
90081		GEOL	210AH	General Geology - Honors	2	
90082		SPCH	127AH	Argumentation Honors	16	
90085		MATH	252AH	Calculus/Analy Geom II-Honors	9	
90154		ENGL	680AH	Honors Topic in Literature	2	
90476		HIST	201AH	United States History I-Honors	17	
90557		MATH	241AH	Applied Calculus I - Honors	4	
90603		PSYC	268AH	Black Psychology-Honors	11	
90753	ENGL	690AV	Special Projects - Honors	1		
	Total				274	
Spring 2007	30296	ENGL	100AH	Composition - Honors	17	
	30316	ENGL	110AH	Comp, Lit, Critical - Honors	18	
	30760	SPAN	120AH	Elementary Spanish -Honors	15	

Source: SMCCCD Data Warehouse

Note: Counts exclude honors students enrolled in non-honors-specific courses. Low enrolled honors sections were offered in conjunction with a regular section of the same course.

**Honors Transfer Program Enrollment by Course: 2003/04 - 2007/08
Unduplicated Head Count**

<u>Term Desc</u>	<u>Crn</u>	<u>Subject Code</u>	<u>Section</u>	<u>Course Title</u>	<u>Counts</u>
	34142	SPCH	150AH	Intercultural Comm -Honors	19
	35380	MATH	251AH	Calc/Anal. Geom - Honors	13
	37642	HIST	100AH	Western Civ I -Honors	17
	38836	GEOL	210AH	General Geology - Honors	4
	39196	MATH	242AH	Applied Calculus II - Honors	3
	39585	MATH	200AH	Elem Probability&Stats-Honors	5
	39967	ENGL	110JH	Comp, Lit, Crit Think - Honor	3
	40074	ANTH	110AH	Cultural Anthropology-Honors	16
	40136	MATH	252AH	Calc/Analytic Geom II - Honors	8
	40603	HIST	240AH	Hist-Ethnic Groups inCA-Honors	16
	40650	PLSC	210AH	American Politics-Honors	12
	40653	PHIL	240AH	Introduction to Ethics-Honors	16
	40800	MUS.	250AH	World Music - Honors	21
	Total				203
Fall 2007	80029	ART	115AH	Art, Music and Ideas-Honors	29
	80600	MUS.	115AH	Music, Art and Ideas-Honors	8
	80765	SPAN	110AH	Elementary Spanish -Honors	11
	83877	ENGL	100AH	Composition - Honors	20
	89112	ENGL	100JH	Composition - Honors	11
	89125	ENGL	110AH	Comp, Lit. & Crit. Think/Honor	16
	89182	SPCH	100AH	Public Speaking - Honors	6
	89249	MATH	251AH	Calc./Analytic Geom. I-Honors	9
	89298	BIOL	675AH	Honors Colloq. in Biology	7
	89310	CRER	650AH	Honors Seminar	20
	89879	MATH	200AH	Probability&Statistics-Honors	6
	89882	PHYS	270AH	Physics with Calc. III-Honors	4
	89884	ECON	100AH	Macro Economics - Honors	20
	90081	GEOL	210AH	General Geology - Honors	3
	90085	MATH	252AH	Calculus/Analy Geom II-Honors	14
	90557	MATH	241AH	Applied Calculus I - Honors	3
	90603	PSYC	268AH	Black Psychology-Honors	3
	91048	SPAN	120AH	Advanced Elem. Spanish - Honor	10
	91052	SPAN	130AH	Intermediate Spanish - Honors	11
	91060	LIT.	111JH	The Short Story - Honors	20
	91211	ANTH	110AH	Cultural Anthropology-Honors	25
	91225	PSYC	300AH	Social Psychology-Honors	20
	91262	MUS.	665SMRO	Choir: Symphony of Psalms	25
	Total				301
Spring 2008	30296	ENGL	100AH	Composition - Honors	23
	30316	ENGL	110AH	Comp, Lit, Critical - Honors	20
	30760	SPAN	120AH	Elementary Spanish -Honors	7
	35380	MATH	251AH	Calc/Anal. Geom - Honors	3
	36127	ENGL	165AH	Advanced Composition-Honors	14
	38736	BIOL	675AH	Honors Colloq. in Biology	6

Source: SMCCCD Data Warehouse

Note: Counts exclude honors students enrolled in non-honors-specific courses. Low enrolled honors sections were offered in conjunction with a regular section of the same course.

**Honors Transfer Program Enrollment by Course: 2003/04 - 2007/08
Unduplicated Head Count**

<u>Term Desc</u>	<u>Crn</u>	<u>Subject Code</u>	<u>Section</u>	<u>Course Title</u>	<u>Counts</u>
	38836	GEOG	210AH	General Geology - Honors	6
	39196	MATH	242AH	Applied Calculus II - Honors	8
	39585	MATH	200AH	Elem Probability&Stats-Honors	9
	40136	MATH	252AH	Calc/Analytic Geom II - Honors	13
	40384	SOCI	100AH	Intro to Sociology-Honors	8
	40653	PHIL	240AH	Introduction to Ethics-Honors	14
	41201	SPAN	110AH	Elementary Spanish - Honors	5
	41206	SPAN	130AH	Intermediate Spanish - Honors	9
	41219	LIT.	151AH	Intro to Shakespeare - Honors	6
	41280	HIST	201AH	United States History I-Honors	17
	41369	LIT.	113JH	The Novel - Honors	8
	41404	SPCH	140AH	Group Discussion - Honors	4
	41411	ART	101AH	History of Art I - Honors	16
	Total				196

Source: SMCCCD Data Warehouse

Note: Counts exclude honors students enrolled in non-honors-specific courses. Low enrolled honors sections were offered in conjunction with a regular section of the same course.

Honors Transfer Enrollment Report - Fall 2003 to 2007

Enrollment by Gender

	Fall 2003		Fall 2004		Fall 2005		Fall 2006		Fall 2007		Change FA06-FA07	5 Year Row Total & Average	
Female	79	56%	85	46%	122	54%	92	44%	100	47%	9%	478	49%
Male	59	42%	97	53%	101	44%	111	53%	108	51%	-3%	476	49%
Unreported	2	1%	1	1%	5	2%	7	3%	5	2%	-29%	20	2%
Column Total	140	100%	183	100%	228	100%	210	100%	213	100%	1%	974	100%

Enrollment by Ethnicity

	Fall 2003		Fall 2004		Fall 2005		Fall 2006		Fall 2007		Change FA06-FA07	5 Year Row Total & Average	
African American	2	1%	6	3%	6	3%	14	7%	13	6%	-7%	41	4%
Asian	45	32%	54	30%	55	24%	64	30%	60	28%	-6%	278	29%
Filipino	19	14%	24	13%	37	16%	31	15%	31	15%	0%	142	15%
Hispanic	23	16%	37	20%	36	16%	34	16%	34	16%	0%	164	17%
Native American					2	1%						2	0%
Other	4	3%	2	1%	10	4%	3	1%	7	3%	133%	26	3%
Unreported	9	6%	11	6%	19	8%	20	10%	20	9%	0%	79	8%
White	38	27%	49	27%	63	28%	44	21%	48	23%	9%	242	25%
Column Total	140	100%	183	100%	228	100%	210	100%	213	100%	1%	974	100%

Enrollment by Age

	Fall 2003		Fall 2004		Fall 2005		Fall 2006		Fall 2007		Change FA06-FA07	5 Year Row Total & Average	
Under 18	2	1%	5	3%	4	2%	11	5%	6	3%	-45%	28	3%
Age 18-22	92	66%	127	69%	161	71%	163	78%	153	72%	-6%	696	71%
Age 23-28	25	18%	27	15%	41	18%	17	8%	32	15%	88%	142	15%
Age 29-39	15	11%	17	9%	14	6%	13	6%	14	7%	8%	73	7%
Age 40-49	2	1%	4	2%	5	2%	3	1%	3	1%	0%	17	2%
Age 50-59	4	3%	2	1%	2	1%	1	0%	4	2%	300%	13	1%
Age 60+			1	1%	1	0%	2	1%	1	0%	-50%	5	1%
Column Total	140	100%	183	100%	228	100%	210	100%	213	100%	1%	974	100%

Enrollment by Status

	Fall 2003		Fall 2004		Fall 2005		Fall 2006		Fall 2007		Change FA06-FA07	5 Year Row Total & Average	
Continuing	97	69%	122	67%	154	68%	119	57%	135	63%	13%	627	64%
Currently K-12			1	1%	1	0%	2	1%	1	0%	-50%	5	1%
First-Time	18	13%	33	18%	39	17%	66	31%	38	18%	-42%	194	20%
First-Time Transfer	10	7%	16	9%	15	7%	11	5%	15	7%	36%	67	7%
Returning	12	9%	9	5%	14	6%	8	4%	17	8%	113%	60	6%
Returning Transfer	3	2%	2	1%	5	2%	4	2%	7	3%	75%	21	2%
Column Total	140	100%	183	100%	228	100%	210	100%	213	100%	1%	974	100%

Source: SMCCCD Data Warehouse

*Note: Counts and percents are based on census figures.

Enrollment by Units

	Fall 2003		Fall 2004		Fall 2005		Fall 2006		Fall 2007		Change FA06-FA07	5 Year Row Total & Average	
Full-time					1	0%	4	2%	2	1%	-50%	7	1%
Part-time	140	100%	183	100%	227	100%	206	98%	211	99%	2%	967	99%
Column Total	140	100%	183	100%	228	100%	210	100%	213	100%	1%	974	100%

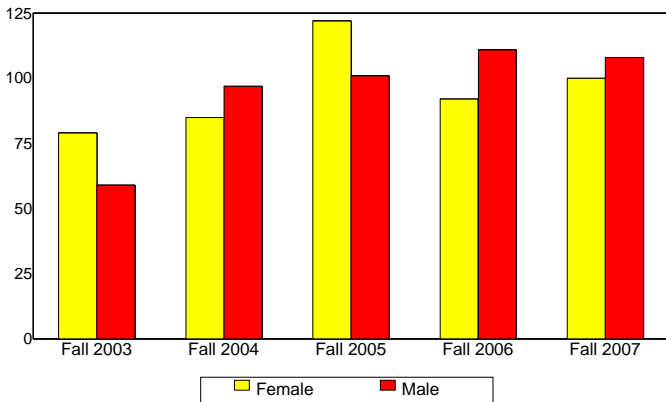
Enrollment by Course-Taking Pattern

	Fall 2003		Fall 2004		Fall 2005		Fall 2006		Fall 2007		Change FA06-FA07	5 Year Row Total & Average	
Day	129	92%	156	85%	188	82%	192	91%	182	85%	-5%	847	87%
Day and Evening	1	1%	8	4%	6	3%	6	3%	12	6%	100%	33	3%
Evening	10	7%	19	10%	34	15%	12	6%	19	9%	58%	94	10%
Column Total	140	100%	183	100%	228	100%	210	100%	213	100%	1%	974	100%

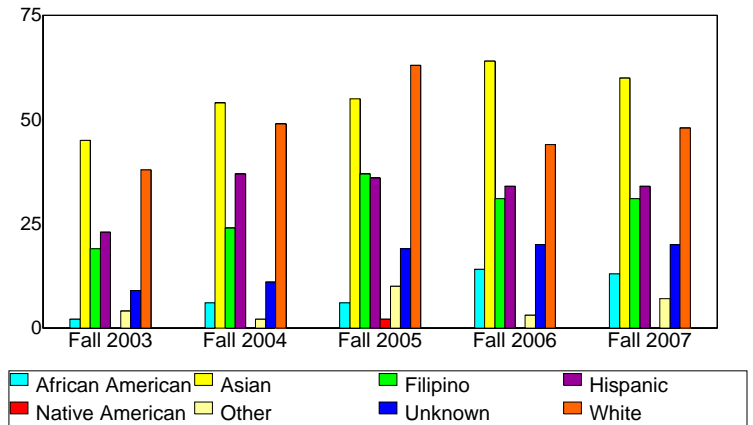
Enrollment by Educational Goal

	Fall 2003		Fall 2004		Fall 2005		Fall 2006		Fall 2007		Change FA06-FA07	5 Year Row Total & Average	
Transfer	119	85%	163	89%	191	84%	194	92%	147	69%	-24%	814	84%
AA/AS w/o Transfer	3	2%	3	2%	9	4%	4	2%	2	1%	-50%	21	2%
Certificate w/o Transfer					1	0%	1	0%	1	0%	0%	3	0%
Acquire/Update Job Skills							3	1%	3	1%	0%	6	1%
Educational Development	2	1%	9	5%	7	3%	3	1%	3	1%	0%	24	2%
Improve Basic Skills									1	0%		1	0%
Undecided	16	11%	8	4%	20	9%	5	2%	12	6%	140%	61	6%
Unreported									44	21%		44	5%
Column Total	140	100%	183	100%	228	100%	210	100%	213	100%	1%	974	100%

Enrollment by Gender



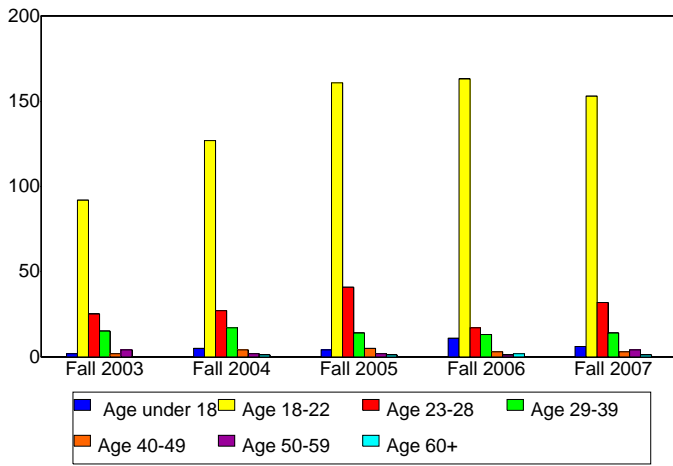
Enrollment by Ethnicity



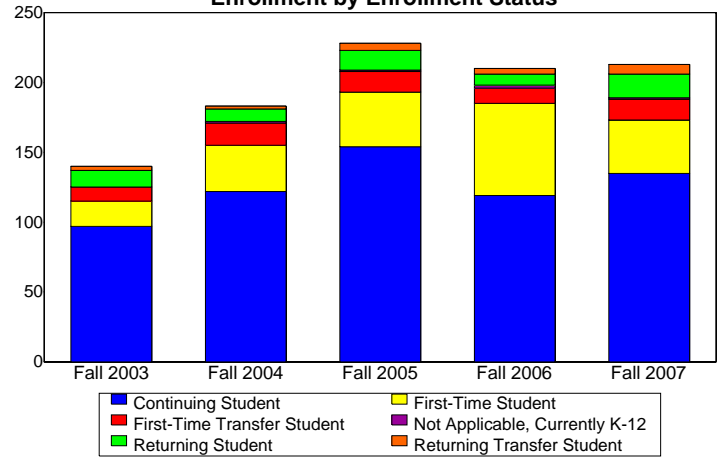
Source: SMCCCD Data Warehouse

*Note: Counts and percents are based on census figures.

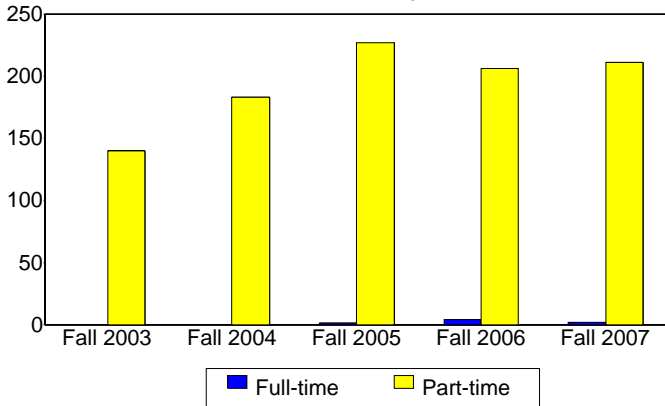
Enrollment by Student Age



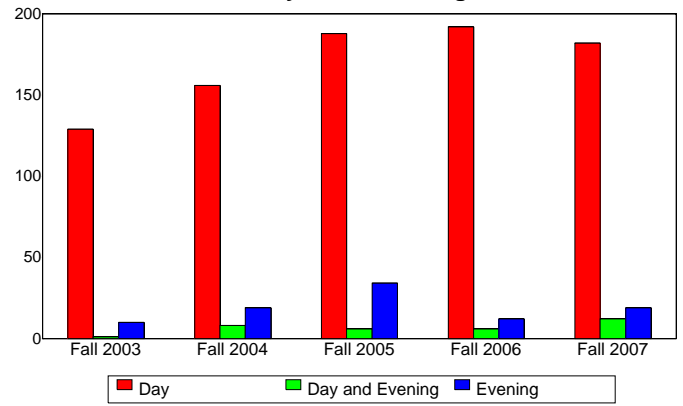
Enrollment by Enrollment Status



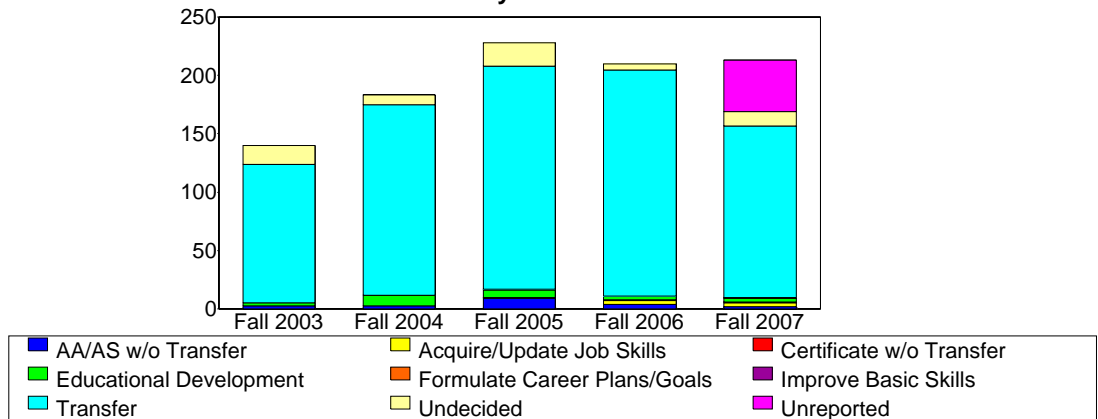
Enrollment by Units



Enrollment by Course-Taking Pattern



Enrollment by Educational Goal



Source: SMCCCD Data Warehouse

Honors Transfer Enrollment Report - Spring 2004 to 2008

11

Enrollment by Gender

	Spring 2004		Spring 2005		Spring 2006		Spring 2007		Spring 2008		Change SP07-SP08	5 Year Row Total & Average	
Female	107	54%	85	56%	108	57%	110	58%	75	48%	-32%	485	54%
Male	85	46%	64	43%	76	42%	73	39%	77	50%	5%	375	44%
Unreported	1	1%	2	1%	2	1%	5	3%	4	2%	-20%	14	2%
Column Total	193	100%	151	100%	186	100%	188	100%	156	100%	-17%	874	100%

Enrollment by Ethnicity

	Spring 2005		Spring 2005		Spring 2006		Spring 2007		Spring 2008		Change SP07-SP08	5 Year Row Total & Average	
African American	6	4%	3	2%	8	3%	7	4%	5	2%	-29%	29	3%
Asian	50	26%	45	29%	54	30%	49	25%	40	28%	-18%	238	27%
Filipino	31	17%	19	13%	24	14%	29	16%	25	16%	-14%	128	15%
Hispanic	40	21%	34	22%	27	14%	38	21%	26	15%	-32%	165	19%
Native American					1	1%	2	1%	2	1%	0%	5	0%
Other	8	5%	8	5%	10	6%	4	2%	4	3%	0%	34	4%
Unported	4	2%	8	6%	13	8%	14	8%	16	10%	14%	55	7%
White	54	26%	34	23%	49	25%	45	23%	38	25%	-16%	220	24%
Column Total	193	100%	151	100%	186	100%	188	100%	156	100%	-17%	874	100%

Enrollment by Age

	Spring 2004		Spring 2005		Spring 2006		Spring 2007		Spring 2008		Change SP07-SP08	5 Year Row Total & Average	
Under 18	3	1%	3	2%	5	3%	2	1%	2	2%	0%	15	2%
Age 18-22	130	71%	110	75%	126	70%	144	80%	109	74%	-24%	619	74%
Age 23-28	34	18%	22	14%	29	15%	24	11%	23	14%	-4%	132	14%
Age 29-39	12	4%	10	6%	15	8%	10	4%	15	8%	50%	62	6%
Age 40-49	10	4%	4	2%	6	2%	3	2%	3	1%	0%	26	2%
Age 50-59	4	1%	1	1%	4	2%	3	1%	3	1%	0%	15	1%
Age 60+			1	1%	1	1%	2	1%	1	1%	-50%	5	1%
Column Total	193	100%	151	100%	186	100%	188	100%	156	100%	-17%	874	100%

Enrollment by Status

	Spring 2004		Spring 2005		Spring 2006		Spring 2007		Spring 2008		Change SP07-SP08	5 Year Row Total & Average	
Continuing	163	84%	131	86%	156	83%	164	84%	144	89%	-12%	758	85%
Currently K-12	1	1%	1	1%	3	2%						5	1%
First-Time	12	7%	7	5%	4	2%	2	2%	3	3%	50%	28	4%
First-Time Transfer	5	3%	6	4%	8	5%	11	9%	6	6%	-45%	36	6%
Returning	11	5%	5	4%	9	5%	6	3%	1	1%	-83%	32	3%
Returning Transfer	1	1%	1	1%	6	3%	5	2%	2	1%	-60%	15	2%
Column Total	193	100%	151	100%	186	100%	188	100%	156	100%	-17%	874	100%

Source: SMCCCD Data Warehouse

*Note: Counts and percents are based on census figures.

Enrollment by Units

	Spring 2004		Spring 2005		Spring 2006		Spring 2007		Spring 2008		Change SP07-SP08	5 Year Row Total & Average	
Full-time	2	1%			1	1%	2	1%			-100%	5	0%
Part-time	191	99%	151	100%	185	99%	186	99%	156	100%	-16%	869	100%
Column Total	193	100%	151	100%	186	100%	188	100%	156	100%	-17%	874	100%

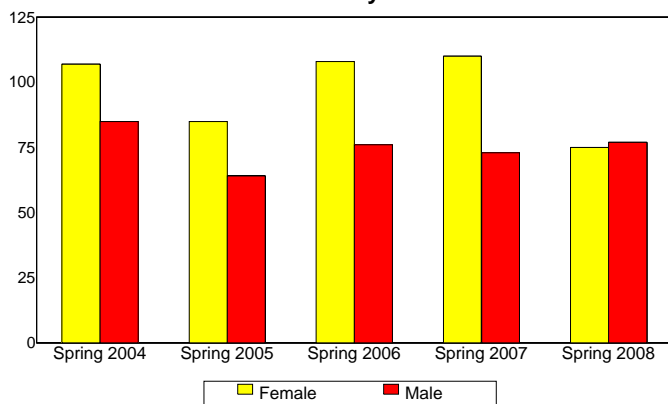
Enrollment by Course-Taking Pattern

	Spring 2004		Spring 2005		Spring 2006		Spring 2007		Spring 2008		Change SP07-SP08	5 Year Row Total & Average	
Day	171	90%	144	96%	146	81%	168	89%	148	96%	-12%	777	90%
Day and Evening	7	2%	3	2%	5	3%	4	2%	2	1%	-50%	21	2%
Evening	15	8%	4	2%	35	16%	16	9%	6	3%	-63%	76	8%
Column Total	193	100%	151	100%	186	100%	188	100%	156	100%	-17%	874	100%

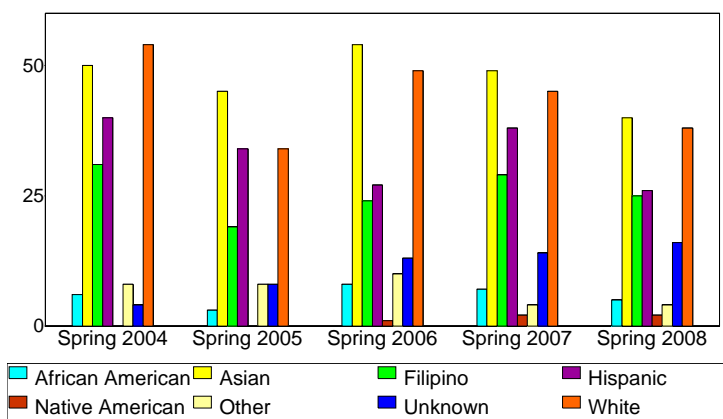
Enrollment by Educational Goal

	Spring 2004		Spring 2005		Spring 2006		Spring 2007		Spring 2008		Change SP07-SP08	5 Year Row Total & Average	
Transfer	151	85%	133	87%	164	88%	172	91%	111	74%	-35%	743	85%
AA/AS w/o Transfer	9	4%	4	3%	5	2%	1	1%	1	1%	0%	20	2%
Certificate w/o Transfer	1	0%			1	1%						2	0%
Acquire/Update Job Skills	2	1%			2	1%	2	1%	1	0%	-50%	7	1%
Educational Development	18	10%	14	10%	14	8%	13	7%	10	8%	-23%	69	8%
Improve Basic Skills									1	1%		1	0%
Unreported									32	17%		32	4%
Column Total	193	100%	151	100%	186	100%	188	100%	156	100%	-17%	874	100%

Enrollment by Gender

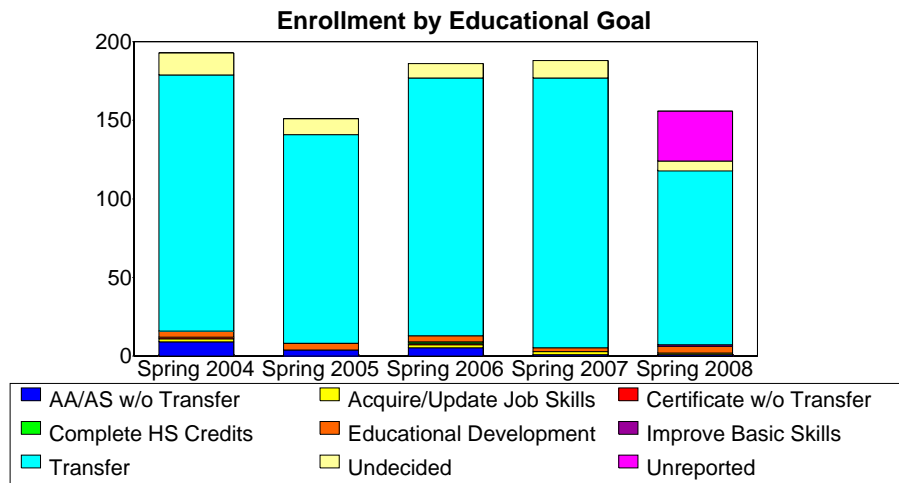
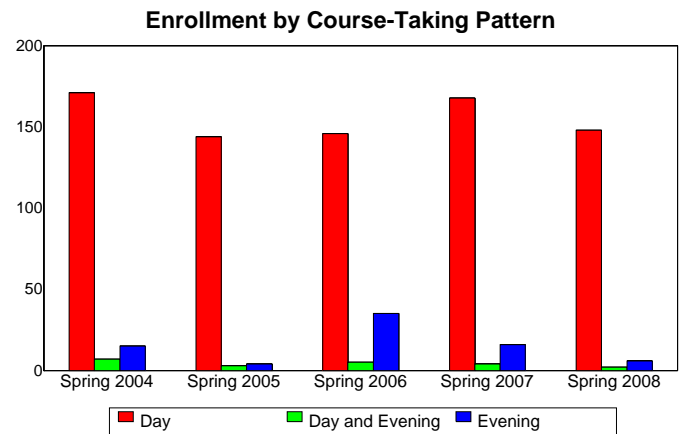
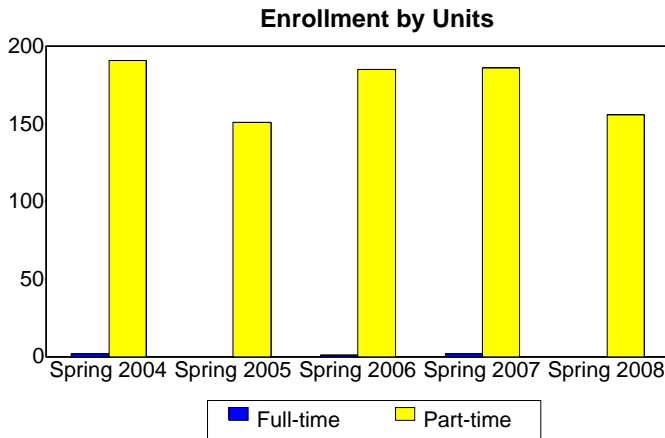
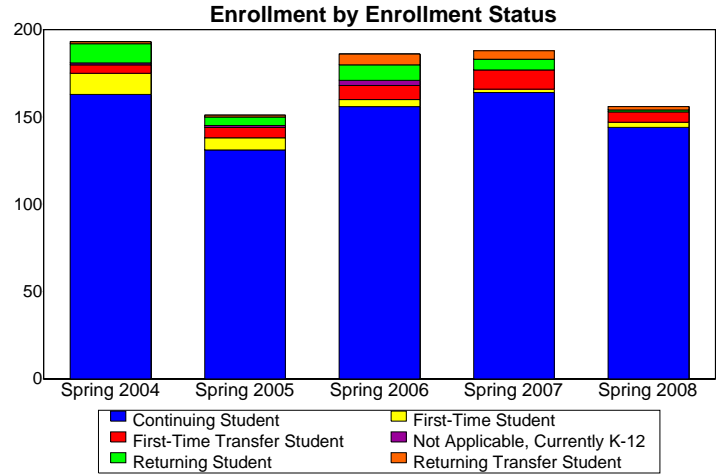
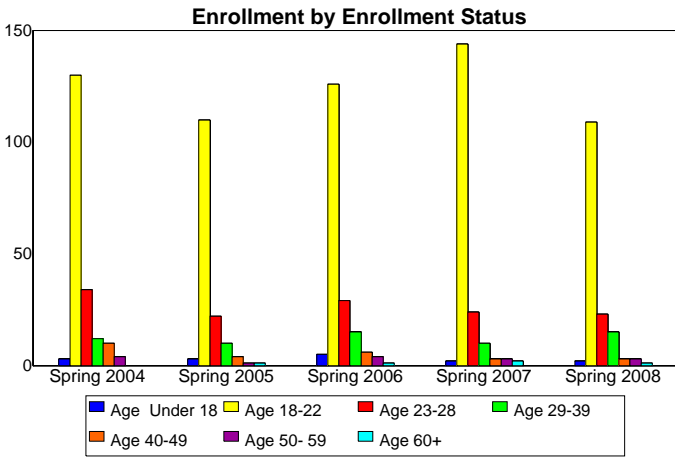


Enrollment by Ethnicity



Source: SMCCCD Data Warehouse

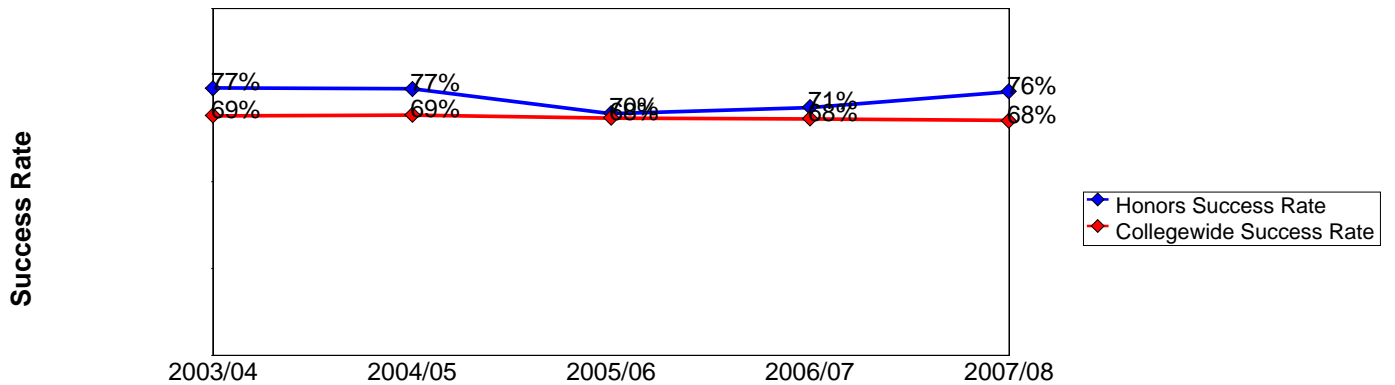
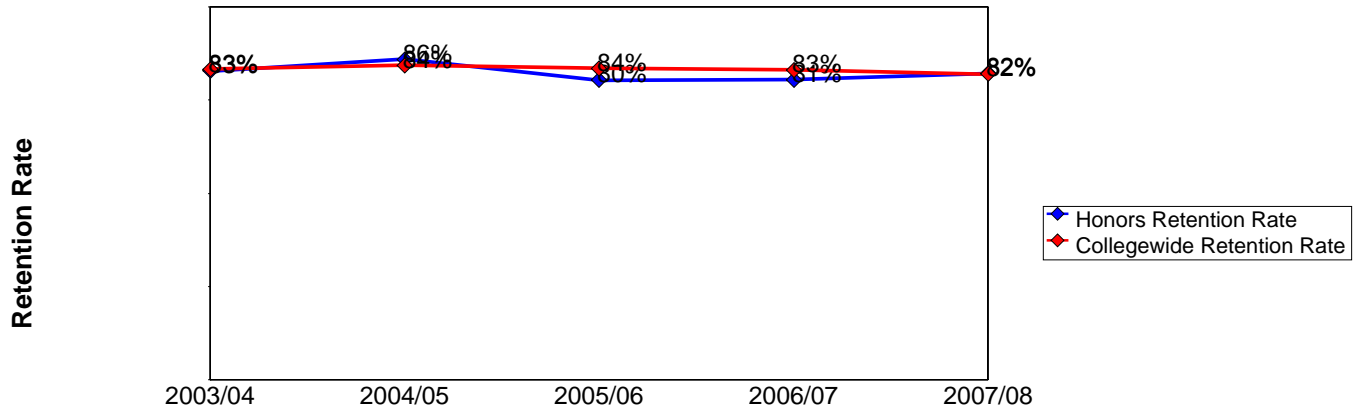
*Note: Counts and percents are based on census.



Source: SMCCCD Data Warehouse

Honors Overall Success and Retention 2003/04 to 2007/08

	Head Count	Retention Count	Retention Rate	Success Count	Success Rate
2003/04	443	367	83%	341	77%
2004/05	443	381	86%	340	77%
2005/06	524	421	80%	365	70%
2006/07	478	385	81%	342	72%
2007/08	470	383	81%	358	76%



Retention Count: Number of students with A,B,C,D,F,CR,NC, I grades.

Retention Rate: The percentage of students who complete a course with a grade of A,B,C,D,F,CR,NC, I out of total enrollments.

Success Count: Number of students with A,B,C,CR grades.

Success Rate: The percentage of students who complete a course with a grade of A,B,C,CR out of total enrollments.

**Honors Success and Retention by Subject
2003/04 to 2007/08**

Anthropology

	Head Count	Retention Count	Retention Rate	Success Count	Success Rate
2003/04	1	1	100%	1	100%
2004/05	26	24	92%	19	73%
2005/06	29	21	72%	17	59%
2006/07	24	21	88%	17	71%
2007/08	23	16	70%	13	57%

Art

	Head Count	Retention Count	Retention Rate	Success Count	Success Rate
2004/05	16	14	88%	13	81%
2005/06	29	21	72%	18	62%
2006/07	34	32	94%	31	91%
2007/08	44	37	84%	32	73%

Biology

	Head Count	Retention Count	Retention Rate	Success Count	Success Rate
2003/04	60	60	100%	59	98%
2004/05	69	67	97%	66	96%
2005/06	47	43	91%	43	91%
2007/08	13	13	100%	12	92%

Business

	Head Count	Retention Count	Retention Rate	Success Count	Success Rate
2005/06	1	1	100%	1	100%
2007/08	1	1	100%	1	100%

Chemistry

	Head Count	Retention Count	Retention Rate	Success Count	Success Rate
2003/04	1	1	100%	1	100%
2005/06	6	6	100%	6	100%

Career and Personal Development

	Head Count	Retention Count	Retention Rate	Success Count	Success Rate
2003/04	34	31	91%	29	85%
2004/05	16	16	100%	16	100%
2005/06	13	13	100%	13	100%
2007/08	20	20	100%	20	100%

Source: SMCCCD Data Warehouse

Retention Count: Number of students with A,B,C,D,F,CR,NC, I grades.

Retention Rate: The percentage of students who complete a course with a grade of A,B,C,D,F,CR,NC, I out of total enrollments.

Success Count: Number of students with A,B,C,CR grades.

Success Rate: The percentage of students who complete a course with a grade of A,B,C,CR out of total enrollments.

**Honors Success and Retention by Subject
2003/04 to 2007/08**

Early Childhood Education

	Head Count	Retention Count	Retention Rate	Success Count	Success Rate
2006/07	1	1	100%	1	100%

Economics

	Head Count	Retention Count	Retention Rate	Success Count	Success Rate
2003/04	1	1	100%	1	100%
2004/05	27	26	96%	22	81%
2005/06	21	17	81%	15	71%
2006/07	29	21	72%	19	66%
2007/08	19	13	68%	13	68%

English

	Head Count	Retention Count	Retention Rate	Success Count	Success Rate
2003/04	105	75	71%	66	63%
2004/05	84	70	83%	59	70%
2005/06	91	69	76%	58	64%
2006/07	95	74	78%	64	67%
2007/08	104	78	75%	70	67%

Geology

	Head Count	Retention Count	Retention Rate	Success Count	Success Rate
2003/04	4	4	100%	4	100%
2004/05	5	5	100%	5	100%
2005/06	15	15	100%	12	80%
2006/07	6	6	100%	6	100%
2007/08	9	8	89%	8	89%

History

	Head Count	Retention Count	Retention Rate	Success Count	Success Rate
2003/04	51	40	78%	38	75%
2004/05	51	39	76%	33	65%
2005/06	57	47	82%	43	75%
2006/07	67	56	84%	48	72%
2007/08	19	18	95%	15	79%

Math

	Head Count	Retention Count	Retention Rate	Success Count	Success Rate
2003/04	18	14	78%	13	72%
2004/05	46	36	78%	29	63%
2005/06	58	39	67%	34	59%
2006/07	58	40	69%	35	60%
2007/08	67	54	81%	54	81%

Source: SMCCCD Data Warehouse

Retention Count: Number of students with A,B,C,D,F,CR,NC, I grades.

Retention Rate: The percentage of students who complete a course with a grade of A,B,C,D,F,CR,NC, I out of total enrollments

Success Count: Number of students with A,B,C,CR grades.

Success Rate: The percentage of students who complete a course with a grade of A,B,C,CR out of total enrollments.

**Honors Success and Retention by Subject
2003/04 to 2007/08**

Music

	Head Count	Retention Count	Retention Rate	Success Count	Success Rate
2003/04	21	17	81%	15	71%
2004/05	15	10	67%	7	47%
2005/06	10	9	90%	7	70%
2006/07	33	26	79%	23	70%
2007/08	7	7	100%	5	71%

Philosophy

	Head Count	Retention Count	Retention Rate	Success Count	Success Rate
2003/04	19	16	84%	11	58%
2004/05	1	1	100%	1	100%
2005/06	72	59	82%	50	69%
2006/07	43	31	72%	29	67%
2007/08	13	11	85%	11	85%

Political Science

	Head Count	Retention Count	Retention Rate	Success Count	Success Rate
2006/07	12	12	100%	10	83%
2007/08	1	1	100%	1	100%

Physics

	Head Count	Retention Count	Retention Rate	Success Count	Success Rate
2003/04	22	20	91%	20	91%
2004/05	15	14	93%	14	93%
2005/06	7	6	86%	6	86%
2006/07	7	7	100%	7	100%
2007/08	5	5	100%	5	100%

Psychology

	Head Count	Retention Count	Retention Rate	Success Count	Success Rate
2003/04	54	47	87%	45	83%
2004/05	21	16	76%	15	71%
2005/06	23	19	83%	17	74%
2006/07	11	9	82%	5	45%
2007/08	23	21	91%	19	83%

Source: SMCCCD Data Warehouse

Retention Count: Number of students with A,B,C,D,F,CR,NC, I grades.

Retention Rate: The percentage of students who complete a course with a grade of A,B,C,D,F,CR,NC, I out of total enrollments.

Success Count: Number of students with A,B,C,CR grades.

Success Rate: The percentage of students who complete a course with a grade of A,B,C,CR out of total enrollments.

**Honors Success and Retention by Subject
2003/04 to 2007/08**

Sociology

	Head Count	Retention Count	Retention Rate	Success Count	Success Rate
2005/06	1	1	100%	1	100%
2007/08	8	4	50%	4	50%

Spanish

	Head Count	Retention Count	Retention Rate	Success Count	Success Rate
2003/04	30	21	70%	21	70%
2004/05	24	22	92%	22	92%
2005/06	10	8	80%	8	80%
2006/07	25	23	92%	22	88%
2007/08	51	41	80%	41	80%

Speech

	Head Count	Retention Count	Retention Rate	Success Count	Success Rate
2003/04	22	19	86%	17	77%
2004/05	27	21	78%	19	70%
2005/06	34	27	79%	16	47%
2006/07	33	26	79%	25	76%
2007/08	10	10	100%	10	100%

Source: SMCCCD Data Warehouse

Retention Count: Number of students with A,B,C,D,F,CR,NC, I grades.

Retention Rate: The percentage of students who complete a course with a grade of A,B,C,D,F,CR,NC, I out of total enrollments.

Success Count: Number of students with A,B,C,CR grades.

Success Rate: The percentage of students who complete a course with a grade of A,B,C,CR out of total enrollments.

**Honors Grades by Subject
2003/04 to 2007/08**

Anthropology

		A	B	C	D	F	W
30023	2006/07	1 100%					
40074	2005/06	5 36%	3 21%	1 7%		1 7%	4 29%
	2006/07	5 31%	6 38%			3 19%	2 13%
40075	2005/06	1 100%					
	2006/07	1 100%					
89577	2002/03	1 100%					
	2005/06	6 43%	1 7%		1 7%	2 14%	4 29%
	2006/07	3 50%		1 17%		1 17%	1 17%
89887	2004/05	11 42%	8 31%		1 4%	4 15%	2 8%
91211	2007/08	7 30%	3 13%	3 13%	1 4%	2 9%	7 30%

Art

		A	B	C	CR	D	F	W
30025	2004/05	1 100%						
30026	2004/05	1 100%						
36803	2006/07	1 100%						
40076	2005/06	1 100%						
40718	2006/07	2 100%						
41411	2007/08	5 31%	2 13%	4 25%		2 13%		3 19%
80028	2005/06	6 21%	6 21%	5 18%		2 7%	1 4%	8 29%
80029	2006/07	23 74%	3 10%	2 6%			1 3%	2 6%
	2007/08	13 46%	5 18%	2 7%	1 4%		3 11%	4 14%
89867	2004/05	6 43%	4 29%	1 7%		1 7%		2 14%

Biology

		A	B	C	F	W
30140	2003/04	1 100%				
30142	2003/04		3 100%			
	2004/05		1 100%			
	2006/07	1 100%				
30143	2003/04	1 100%				
	2004/05	1 100%				
30144	2006/07	1 100%				
30146	2003/04	1 100%				
30149	2003/04	1 100%				
30150	2004/05	2 67%	1 33%			
30151	2003/04	4 80%	1 20%			
	2004/05	1 50%	1 50%			
	2006/07	2 67%	1 33%			
30152	2003/04	1 100%				
	2004/05	1 33%		2 67%		
	2006/07			1 100%		
34782	2003/04		2 67%	1 33%		
	2004/05	1 33%		2 67%		

Business**A**

30161	2007/08	1	100%
80192	2005/06	1	100%

Chemistry**A****B****C**

40030	2005/06	3	50%	2	33%	1	17%
80197	2002/03	1	100%				

Career and Personal Development**A****B****C****D****F****CR****W**

38783	2003/04	8	62%	1	8%	1	8%		1	8%	1	8%	
89310	2003/04	16	76%			2	10%	1	5%			2	10%
	2004/05	9	56%	2	13%						5	31%	
	2005/06	13	100%										
	2007/08	18	90%								2	10%	

Early Childhood Education**A**

36436	2006/07	1	100%
--------------	---------	---	------

Economics**A****B****C****D****F****W**

30285	2006/07	1	100%										
30286	2003/04			1	100%								
	2004/05			1	100%								
36554	2004/05	1	100%										
	2007/08	1	100%										
89884	2004/05	3	12%	9	36%	8	32%	3	12%	1	4%	1	4%
	2005/06	7	33%	4	19%	4	19%	1	5%	1	5%	4	19%
	2006/07	3	11%	9	32%	6	21%	2	7%			8	29%
	2007/08	3	17%	7	39%	2	11%					6	33%

English**A****C****D****F****CR****W**

30296	2003/04	5	28%	3	17%	1	6%					9	50%
	2004/05	5	33%	2	13%	1	7%					7	47%
	2005/06	6	46%			1	8%	2	15%			4	31%
	2006/07	4	36%			1	9%					6	55%
	2007/08	8	57%			2	14%					4	29%
30316	2003/04	2	17%	3	25%	1	8%	4	33%			2	17%
	2004/05	5	38%	2	15%	1	8%	2	15%			3	23%
	2005/06	2	17%	3	25%	1	8%					6	50%
	2006/07	4	40%	3	30%	2	20%					1	10%
	2007/08	4	31%	2	15%			1	8%			6	46%

English

		A	C	D	F	CR	W
30319	2004/05	1 100%					
30326	2003/04	1 100%					
34218	2007/08	1 100%					
36127	2007/08	2 22%	2 22%				5 56%
38474	2007/08	1 100%					
38497	2006/07		1 100%				
39717	2004/05	5 71%		1 14%			1 14%
39967	2005/06	2 100%					
	2006/07	3 100%					
80318	2007/08	1 100%					
83582	2003/04	1 100%					
83877	2003/04	6 35%	2 12%	1 6%	1 6%		7 41%
	2004/05	9 47%	3 16%	3 16%	1 5%		3 16%
	2005/06	13 54%	3 13%	2 8%			6 25%
	2006/07	10 63%					6 38%
	2007/08	6 43%	1 7%	2 14%			5 36%
84367	2003/04	1 100%					
84374	2003/04	2 25%	2 25%				4 50%
84877	2003/04	7 44%			1 6%		8 50%
	2004/05	2 22%	5 56%		2 22%		
	2005/06		4 57%	2 29%			1 14%
89112	2005/06	3 25%	1 8%		3 25%		5 42%
	2006/07	10 71%			4 29%		
	2007/08	4 57%					3 43%
89125	2006/07	4 24%	2 12%		3 18%		8 47%
	2007/08	4 44%	2 22%				3 33%
89126	2007/08	1 100%					
89859	2007/08	1 100%					
90753	2006/07					1 100%	

Geology

		A	B	C	D	F	W
38836	2003/04	3 75%	1 25%				
	2004/05	5 100%					
	2005/06	5 56%	1 11%	1 11%	1 11%	1 11%	
	2007/08	2 50%	1 25%	1 25%			
	200803	5 83%					1 17%
90081	2005/06	3 50%	2 33%		1 17%		
	2006/07	2 100%					
	2007/08		1 33%	2 67%			

History

		A	B	C	D	F	I	W
30443	2003/04	1 50%	1 50%					
30445	2003/04	1 100%						
30446	2004/05	2 100%						
30457	2004/05	1 100%						

History

		A	B	C	D	F	I	W	23
35937	2004/05	1 100%							
35938	2003/04	1 100%							
37642	2006/07	7 41%	5 29%			3 18%		2 12%	
38700	2003/04	4 17%	8 35%	5 22%				6 26%	
	2004/05	3 14%	1 5%	3 14%	1 5%	1 5%		12 57%	
39770	2006/07	1 100%							
40049	2005/06	12 52%	4 17%	1 4%		1 4%		5 22%	
40603	2006/07	10 63%	2 13%	1 6%			1 6%	2 13%	
41280	2007/08	4 24%	7 41%	2 12%		3 18%		1 6%	
80438	2006/07		1 100%						
80450	2007/08	1 100%							
80453	2007/08	1 100%							
84323	2006/07	1 100%							
84324	2005/06	7 30%	5 22%	5 22%	1 4%	1 4%		4 17%	
88446	2003/04	1 100%							
88767	2003/04	10 43%	5 22%	1 4%	1 4%	1 4%		5 22%	
	2005/06	6 55%	2 18%	1 9%		1 9%		1 9%	
	2006/07	7 50%	4 29%	2 14%				1 7%	
89900	2004/05	1 100%							
89902	2004/05	14 58%	6 25%	1 4%		3 13%			
90476	2006/07	5 29%	1 6%	1 6%	1 6%	3 18%		6 35%	

Math

		A	B	C	D	F	W
30570	2005/06	1 50%	1 50%				
30574	2005/06		1 100%				
34638	2004/05	1 100%					
	2006/07	1 50%	1 50%				
	2007/08	4 100%					
35380	2003/04		1 100%				
	2004/05	1 8%	3 25%	2 17%	1 8%	4 33%	1 8%
	2005/06						1 100%
	2006/07	5 38%	2 15%		3 23%		3 23%
	2007/08	1 33%					2 67%
39196	2003/04	3 38%	1 13%	1 13%		1 13%	2 25%
	2004/05	1 13%	7 88%				
	2005/06	3 50%	2 33%				1 17%
	2006/07	3 100%					
	2007/08	5 63%	1 13%				2 25%
39585	2004/05	3 38%	1 13%	1 13%	1 13%		2 25%
	2005/06	1 20%	1 20%	2 40%			1 20%
	2006/07	1 20%	1 20%	2 40%			1 20%
	2007/08	6 75%	2 25%				
40136	2005/06	2 29%			1 14%	1 14%	3 43%
	2006/07	3 38%	2 25%	1 13%		1 13%	1 13%
	2007/08	4 36%	5 45%	2 18%			
80570	2007/08			1 100%			

Math

		A	B	C	D	F	W
80578	2006/07	1 100%					
88298	2007/08		1 100%				
89249	2003/04	1 14%	4 57%				2 29%
	2004/05	1 8%	3 25%		1 8%		7 58%
	2005/06	2 13%	4 25%	4 25%		1 6%	5 31%
	2006/07	3 43%	3 43%				1 14%
	2007/08	6 67%		1 11%			2 22%
89640	2003/04	2 100%					
89879	2004/05	1 20%	2 40%	2 40%			
	2005/06	3 27%	1 9%	2 18%		1 9%	4 36%
	2006/07	1 17%		1 17%			4 67%
	2007/08	2 40%					3 60%
89893	2007/08	1 100%					
90085	2005/06	2 22%	1 11%	1 11%		1 11%	4 44%
	2006/07	2 22%	2 22%		1 11%		4 44%
	2007/08	8 62%	3 23%	1 8%			1 8%
90557	2006/07						4 100%
	2007/08						3 100%

Music

		A	B	C	D	F	W
37695	2003/04	5 25%	6 30%	3 15%		2 10%	4 20%
	2004/05	5 36%	1 7%	1 7%	1 7%	1 7%	5 36%
	2005/06	2 22%	2 22%	2 22%	1 11%	1 11%	1 11%
38745	2005/06	1 100%					
40800	2006/07	10 50%	4 20%			1 5%	5 25%
80600	2006/07	6 50%	2 17%			2 17%	2 17%
	2007/08	2 29%	2 29%	1 14%		2 29%	
89548	2003/04	1 100%					
89682	2006/07	1 100%					

Philosophy

		A	B	C	D	F	NC	W
30684	2006/07	1 100%						
30685	2003/04	5 26%	4 21%	2 11%		2 11%	3 16%	3 16%
30689	2006/07	1 100%						
35545	2005/06	4 16%	12 48%	3 12%		1 4%		5 20%
35940	2005/06		1 100%					
39514	2006/07	1 100%						
40050	2005/06	4 36%	4 36%	2 18%		1 9%		
40653	2006/07	6 38%	5 31%	1 6%				4 25%
	2007/08	2 15%	6 46%	3 23%				2 15%
84841	2004/05	1 100%						
88786	2005/06	7 32%	3 14%	2 9%		3 14%		7 32%
	2006/07	6 25%	6 25%	2 8%		2 8%		8 33%
90142	2005/06	3 60%	1 20%			1 20%		
90158	2005/06	3 38%		1 13%	1 13%	2 25%		1 13%

Political Science

		A		B		C		D		F	
40650	2006/07	3	25%	2	17%	5	42%	1	8%	1	8%
89150	2007/08	1	100%								

Physics

		A		B		C		W	
39363	2003/04	1	20%	3	60%	1	20%		
	2004/05	3	60%			1	20%	1	20%
39587	2004/05	3	100%						
80699	2007/08	1	100%						
89586	2003/04	3	23%	5	38%	4	31%	1	8%
89587	2003/04	2	50%	1	25%			1	25%
89882	2004/05	2	29%	4	57%	1	14%		
	2005/06	3	43%	3	43%			1	14%
	2006/07	4	57%	2	29%	1	14%		
	2007/08	2	50%	1	25%	1	25%		

Psychology

		A		B		C		D		F		CR		W	
30708	2004/05	7	33%	5	24%	3	14%	1	5%					5	24%
30709	2007/08	1	100%												
37645	2005/06	1	100%												
38083	2003/04	5	20%	8	32%	9	36%	1	4%	1	4%			1	4%
40032	2005/06	7	32%	6	27%	3	14%			2	9%			4	18%
83188	2006/07	1	100%												
88784	2003/04	6	21%	12	43%	4	14%							6	21%
89694	2003/04											1	100%		
90603	2006/07	1	10%	2	20%	1	10%			4	40%			2	20%
	2007/08			1	33%	1	33%			1	33%				
91225	2007/08	9	47%	6	32%	1	5%	1	5%					2	11%

Sociology

		A		B		W	
30746	2005/06	1	100%				
40384	2007/08	3	38%	1	13%	4	50%

Source: SMCCCD Data Warehouse

Retention Count: Number of students with A,B,C,D,F,CR,NC, I grades.

Retention Rate: The percentage of students who complete a course with a grade of A,B,C,D,F,CR,NC, I out of total enrollments.

Success Count: Number of students with A,B,C,CR grades.

Success Rate: The percentage of students who complete a course with a grade of A,B,C,CR out of total enrollments.

Office of Planning, Research & Institutional Effectiveness

Spanish

		A		B		C		F		W	
30760	2003/04	12	52%	1	4%	1	4%			9	39%
	2004/05	7	78%	1	11%	1	11%				
	2005/06	4	50%	3	38%					1	13%
	2006/07	8	57%	4	29%					2	14%
	2007/08	3	43%	3	43%	1	14%				
37024	2004/05	1	100%								
41201	2007/08	3	60%							2	40%
41206	2007/08	3	33%	3	33%	1	11%			2	22%
80765	2004/05	11	85%							2	15%
	2005/06	1	50%							1	50%
	2006/07	9	82%	1	9%			1	9%		
	2007/08	6	55%	2	18%	2	18%			1	9%
80770	2004/05	1	100%								
80772	2003/04	3	75%	1	25%						
89179	2003/04	3	100%								
91048	2007/08	4	44%	1	11%	1	11%			3	33%
91052	2007/08	8	80%							2	20%

Speech

		A		B		C		D		F		W	
30769	2004/05	1	100%										
30777	2003/04	1	100%										
34142	2006/07	7	41%	1	6%	6	35%					3	18%
36562	2003/04	11	52%	5	24%					2	10%	3	14%
39933	2005/06	4	36%	3	27%	1	9%			1	9%	2	18%
41404	2007/08	3	75%	1	25%								
84823	2005/06	1	100%										
89182	2007/08	2	33%	3	50%	1	17%						
89866	2004/05	9	35%	7	27%	2	8%			2	8%	6	23%
90082	2005/06	2	10%	3	14%	2	10%	2	10%	7	33%	5	24%
	2006/07			5	31%	6	38%	1	6%			4	25%

Source: SMCCCD Data Warehouse

Retention Count: Number of students with A,B,C,D,F,CR,NC, I grades.

Retention Rate: The percentage of students who complete a course with a grade of A,B,C,D,F,CR,NC, I out of total enrollments.

Success Count: Number of students with A,B,C,CR grades.

Success Rate: The percentage of students who complete a course with a grade of A,B,C,CR out of total enrollments.