



2008




Gateway

Learning Community Outcomes Report

Prepared by:

Office of Planning, Research & Institutional Effectiveness



Section Contents



Term Enrollment by Course

Term Enrollment by Demographic

Overall Success and Retention

Success and Retention by Subject

Grade Distribution by Subject



**Gateway Enrollment by Course: Summer 2005 - Spring 2008
Unduplicated Head Count**

Term Desc	Crn	Subject Code	Section	Course Title	Counts
Summer 2005	53257	MATH	811GW	Pre-Algebra - GW	13
	53258	CRER	650GW	Gateway Seminar	20
	53259	ENGL	853GW	Writing Assistance Lab	17
	53263	ENGL	826GW	Basic Writing Skills	17
	53264	READ	826GW	Reading Improvement	17
	53267	MATH	650GW	Supervised Tutoring - Gateway	17
	Total				101
Fall 2006	80353	ENGL	826GW	Basic Writ. Skills - Gateway	40
	80731	READ	826GW	Reading Improv. - Gateway	43
	90092	MATH	805GW	Fundamentals of Mathematics I	13
	90093	MATH	806GW	Fundamentals of Mathematics II	14
	90555	ENGL	853GW	Writing Instruction w/Computer	38
Total				148	
Fall 2007	80353	ENGL	826GW	Basic Writ. Skills - Gateway	14
	80731	READ	826GW	Reading Improv. - Gateway	12
	91164	MATH	811GW	Fundamentals of Math-Gateway	20
	91219	LSKL	853GW	Writing&Reading Assistance-GW	21
	91394	CRER	650GW	Seminar Group - Gateway	21
Total				88	
Spring 2006	40306	ENGL	826GW	Basic Writing Skills	19
	40307	READ	826GW	Reading Improvement	21
	40392	MATH	805GW	Fund of Math I - Gateway	19
	40403	CRER	650GW	Gateway Seminar	21
	40414	MATH	806GW	Fundamentals of Mathematics II	18
	40416	MATH	650GW	Supp. Math Instr. - Gateway	22
	40417	ENGL	853GW	Writ. Inst - Comp Ass. Gateway	22
Total				142	
Spring 2007	40306	ENGL	826GW	Basic Writing Skills	33
	40307	READ	826GW	Reading Improvement	42
	40417	ENGL	853GW	Writ. Inst - Comp Ass. Gateway	17
	40679	MATH	811GW	Fundamentals of Math - Gateway	34
Total				126	
Spring 2008	40306	ENGL	826GW	Basic Writing Skills	23
	40307	READ	826GW	Reading Improvement	23
	40403	CRER	650GW	Gateway Seminar	23
	40416	MATH	650GW	Supp. Math Instr. - Gateway	22
	40679	MATH	811GW	Fundamentals of Math - Gateway	28
	41587	LSKL	853GW	Writing and Reading Assistance	22
Total				141	

Source: SMCCCD Data Warehouse

Gateway Enrollment Report - Fall 2006 to 2007

Enrollment by Gender

	Fall 2006		Fall 2007		Change FA06-FA07	2 Year Row Total & Average	
Female	39	48%	11	52%	-72%	50	49%
Male	41	51%	10	48%	-76%	51	50%
Unreported	1	1%			-100%	1	1%
Column Total	81	100%	21	100%	-74%	102	100%

Enrollment by Ethnicity

	Column Total		Fall 2007		Change FA06-FA07	2 Year Row Total & Average	
African American	3	4%			-100%	3	3%
Asian	22	27%	6	29%	-73%	28	27%
Filipino	22	27%	6	29%	-73%	28	27%
Hispanic	15	19%	4	19%	-73%	19	19%
Other			1	5%		1	1%
Unreported	5	6%			-100%	5	5%
White	14	17%	4	19%	-71%	18	18%
Column Total	81	100%	21	100%	-74%	102	100%

Enrollment by Age

	Fall 2006		Fall 2007		Change FA06-FA07	2 Year Row Total & Average	
Age 18-22	67	83%	4	19%	-94%	71	70%
Age 23-28	7	9%	6	29%	-14%	13	13%
Age 29-39	6	7%	5	24%	-17%	11	11%
Age 40-49	1	1%	3	14%	200%	4	4%
Age 50-59			2	10%		2	2%
Age 60+			1	5%		1	1%
Column Total	81	100%	21	100%	-74%	102	100%

Enrollment by Status

	Fall 2006		Fall 2007		Change FA06-FA07	2 Year Row Total & Average	
Continuing	20	25%	2	10%	-90%	22	22%
First-Time	45	56%	6	29%	-87%	51	50%
First-Time Transfer	4	5%	6	29%	50%	10	10%
Returning	9	11%	4	19%	-56%	13	13%
Returning Transfer	3	4%	3	14%	0%	6	6%
Column Total	81	100%	21	100%	-74%	102	100%

Source: SMCCCD Data Warehouse

*Note: Counts and percents are based on census figures.

Enrollment by Units

	Fall 2006		Fall 2007		Change FA06-FA07	2 Year Row Total & Average	
	Count	Percent	Count	Percent		Count	Percent
Part-time	81	100%	21	100%	-74%	102	100%
Column Total	81	100%	21	100%	-74%	102	100%

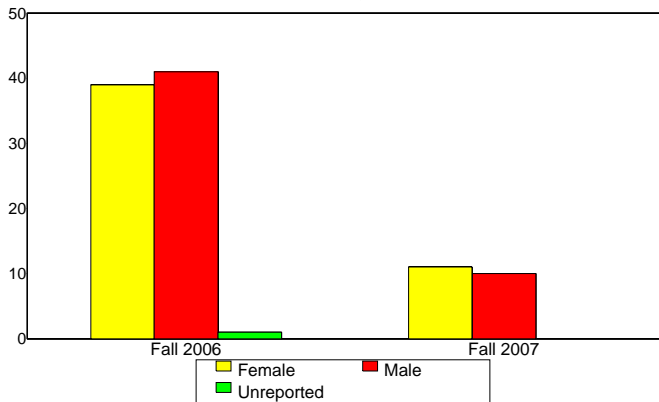
Enrollment by Course-Taking Pattern

	Fall 2006		Fall 2007		Change FA06-FA07	2 Year Row Total & Average	
	Count	Percent	Count	Percent		Count	Percent
Day	81	100%	21	100%	-74%	102	100%
Column Total	81	100%	21	100%	-74%	102	100%

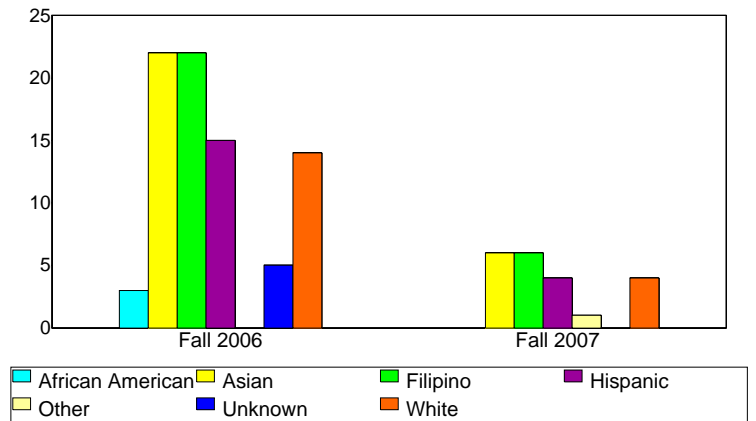
Enrollment by Educational Goal

	Fall 2006		Fall 2007		Change FA06-FA07	2 Year Row Total & Average	
	Count	Percent	Count	Percent		Count	Percent
Transfer	51	63%	1	5%	-98%	52	51%
AA/AS w/o Transfer	1	1%	1	5%	0%	2	2%
Acquire/Update Job Skills	4	5%	11	52%	175%	15	15%
Certificate w/o Transfer	5	6%	6	29%	20%	11	11%
Educational Development	1	1%			-100%	1	1%
Improve Basic Skills	1	1%			-100%	1	1%
Undecided	18	22%	2	10%	-89%	20	20%
Column Total	81	100%	21	100%	-74%	102	100%

Enrollment by Gender



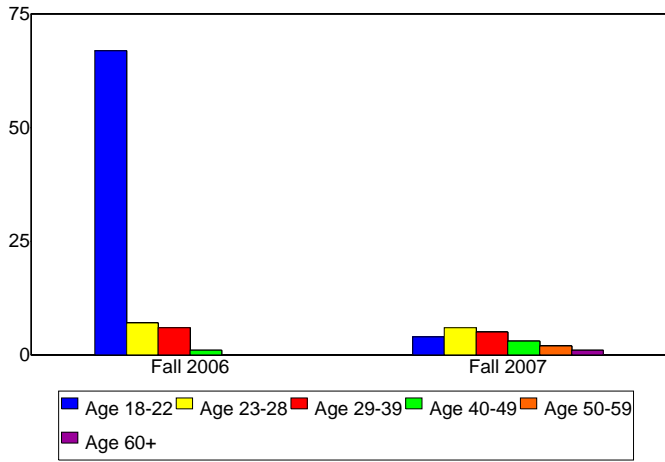
Enrollment by Ethnicity



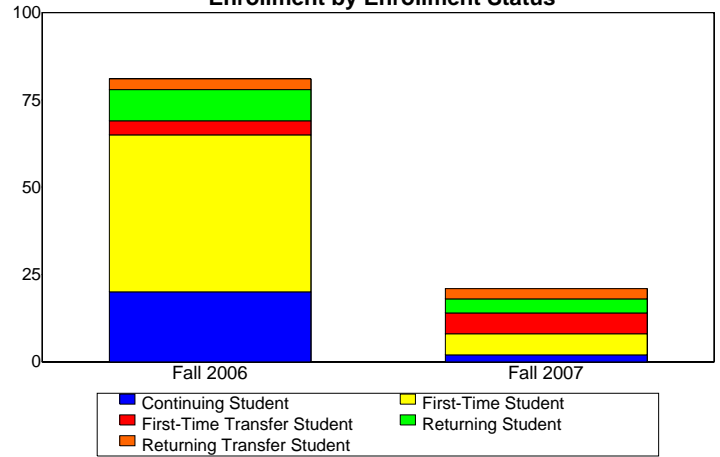
Source: SMCCCD Data Warehouse

*Note: Counts and percents are based on census figures.

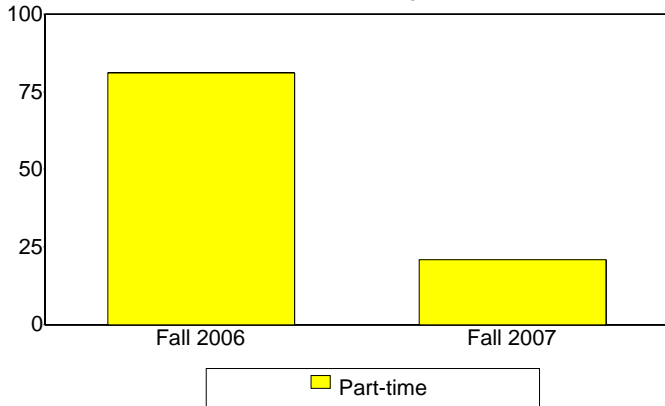
Enrollment by Student Age



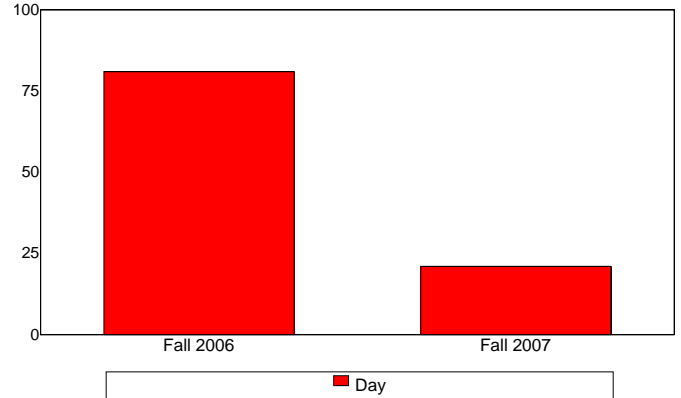
Enrollment by Enrollment Status



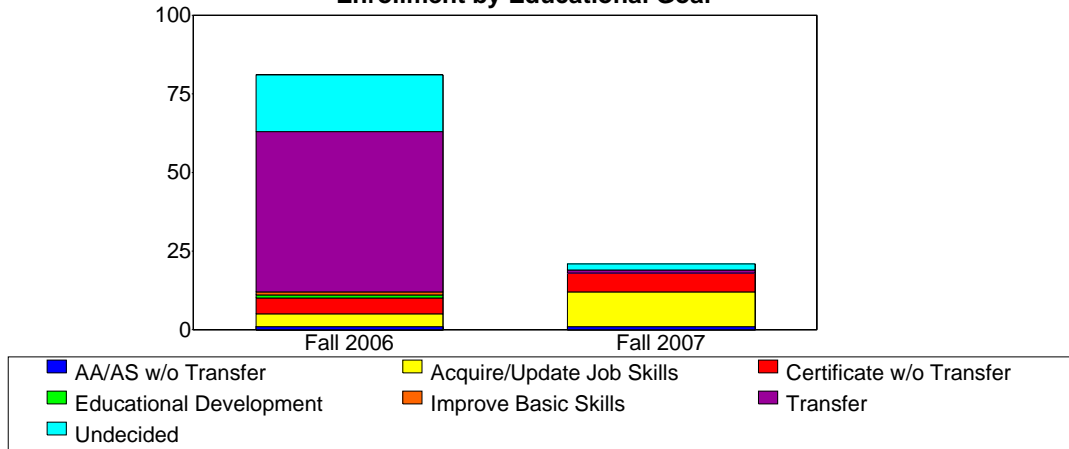
Enrollment by Units



Enrollment by Course-Taking Pattern



Enrollment by Educational Goal



Source: SMCCCD Data Warehouse

Gateway Enrollment Report - Spring 2006 to Spring 2008

Enrollment by Gender

	Spring 2006		Spring 2007		Spring 2008		Change SP07-SP08	3 Year Row Total & Average	
Female	13	51%	30	35%	27	76%	-10%	70	50%
Male	10	44%	58	65%	9	24%	-84%	77	49%
Unreported	1	5%	1	0%	1	0%	0%	3	1%
Column Total	24	100%	89	100%	37	100%	-58%	150	100%

Enrollment by Ethnicity

	Spring 2006		Spring 2007		Spring 2008		Change SP07-SP08	3 Year Row Total & Average	
African American	4	20%	8	8%	6	18%	-25%	18	13%
Asian	4	15%	26	30%	1	0%	-96%	31	19%
Filipino	2	10%	18	20%	4	11%	-78%	24	16%
Hispanic	9	35%	23	25%	21	60%	-9%	53	38%
Unreported	1	5%	4	3%	1	0%	-75%	6	2%
White	4	16%	10	12%	4	11%	-60%	18	12%
Column Total	24	100%	89	100%	37	100%	-58%	150	100%

Enrollment by Age

	Spring 2006		Spring 2007		Spring 2008		Change SP07-SP08	3 Year Row Total & Average	
Age 18-22	11	50%	76	87%	25	76%	-67%	112	79%
Age 23-28	2	6%	9	10%	4	8%	-56%	15	8%
Age 29-39	2	10%	4	3%	5	11%	25%	11	7%
Age 40-49	5	20%			3	6%		8	4%
Age 50-59	4	15%						4	2%
Column Total	24	100%	89	100%	37	100%	-58%	150	100%

Enrollment by Status

	Spring 2006		Spring 2007		Spring 2008		Change SP07-SP08	3 Year Row Total & Average	
Continuing	4	19%	53	55%	19	53%	-64%	76	50%
First-Time	11	54%	19	24%	8	23%	-58%	38	27%
First-Time Transfer	1	5%	6	10%	4	14%	-33%	11	11%
Returning	5	20%	7	7%	6	10%	-14%	18	9%
Returning Transfer	3	2%	4	4%			-100%	7	3%
Column Total	24	100%	89	100%	37	100%	-58%	150	100%

Source: SMCCCD Data Warehouse

*Note: Counts and percents are based on census figures.

Enrollment by Units

	Spring 2006		Spring 2007		Spring 2008		Change SP07 - SP08	3 Year Row Total & Average	
Full-time	17	66%	1	1%	14	38%	1,300%	32	21%
Part-time	7	34%	88	99%	23	62%	-74%	118	79%
Column Total	24	100%	89	100%	37	100%	-58%	150	100%

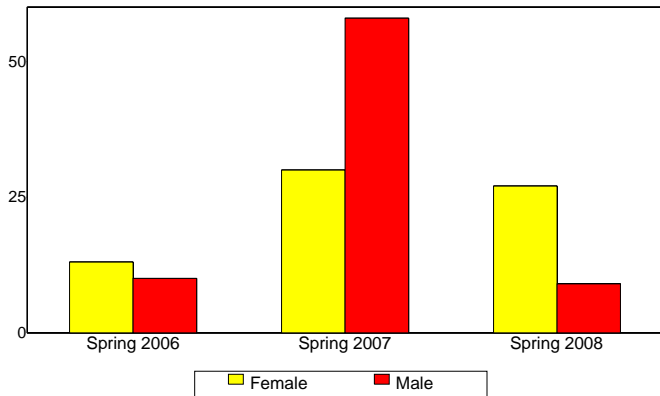
Enrollment by Course-Taking Pattern

	Spring 2006		Spring 2007		Spring 2008		Change SP07-SP08	3 Year Row Total & Average	
Day	24	100%	89	100%	37	100%	-58%	150	100%
Column Total	24	100%	89	100%	37	100%	-58%	150	100%

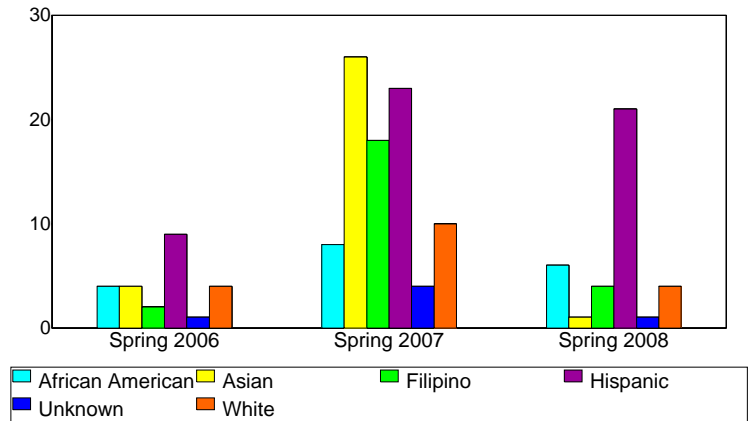
Enrollment by Educational Goal

	Spring 2006		Spring 2007		Spring 2008		Change SP07-SP08	3 Year Row Total & Average	
Transfer	10	41%	56	62%	13	38%	-77%	79	52%
AA/AS w/o Transfer	1	5%	10	9%	4	9%	-60%	15	9%
Acquire/Update Job Skills	4	15%	2	2%	5	11%	150%	11	6%
Certificate w/o Transfer	3	10%	5	6%	3	11%	-40%	11	8%
Educational Development					1	4%		1	1%
Improve Basic Skills	2	10%			2	4%		4	2%
Undecided	4	19%	16	20%	5	13%	-69%	25	18%
Unreported					4	11%		4	4%
Column Total	24	100%	89	100%	37	100%	-58%	150	100%

Enrollment by Gender



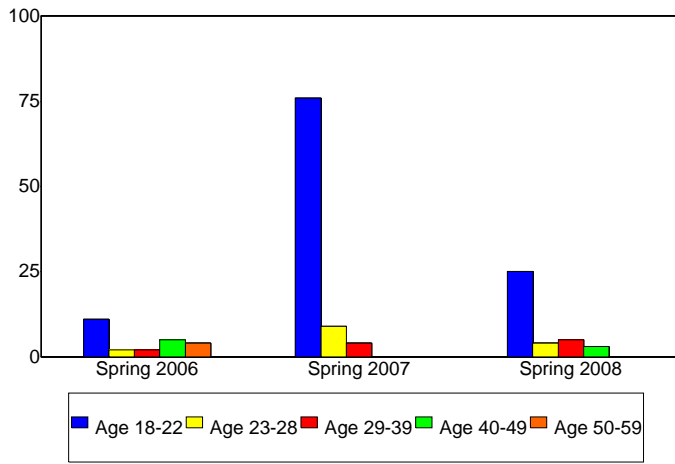
Enrollment by Ethnicity



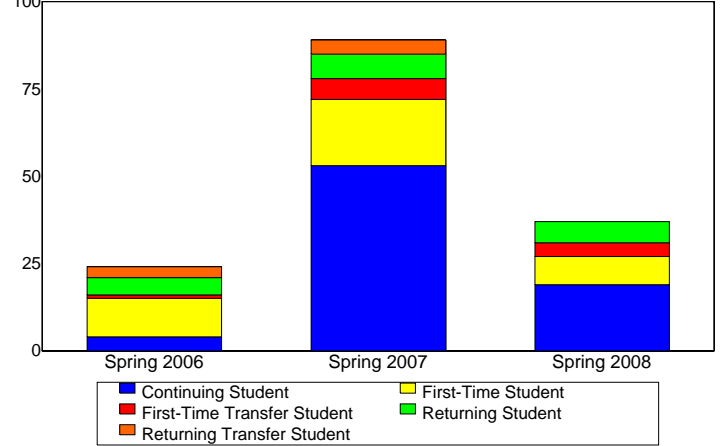
Source: SMCCCD Data Warehouse

*Note: Counts and percents are based on census.

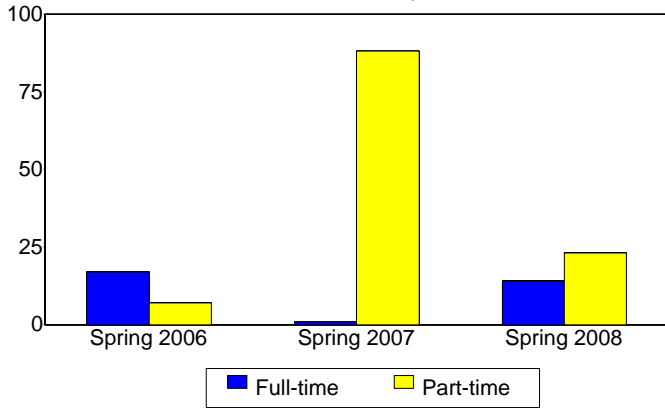
Enrollment by Student Age



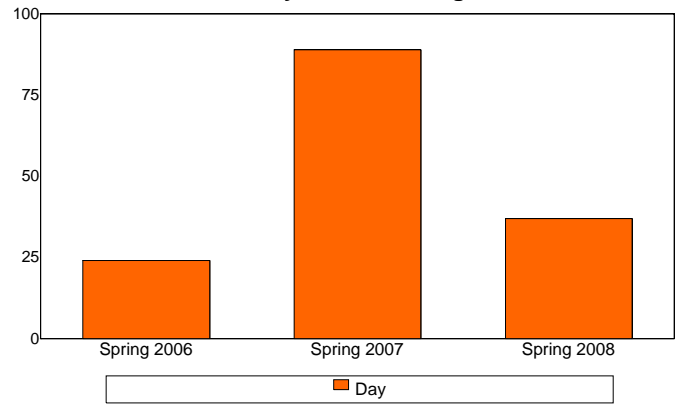
Enrollment by Enrollment Status



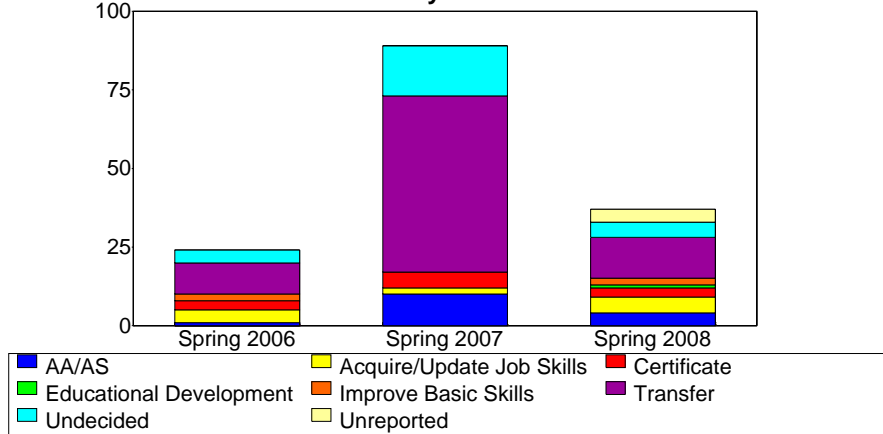
Enrollment by Units



Enrollment by Course-Taking Pattern



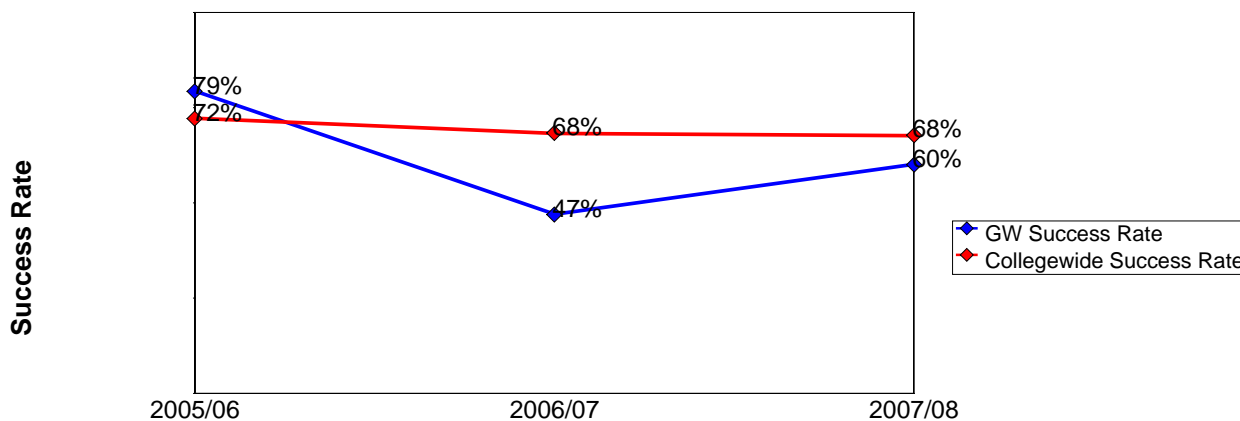
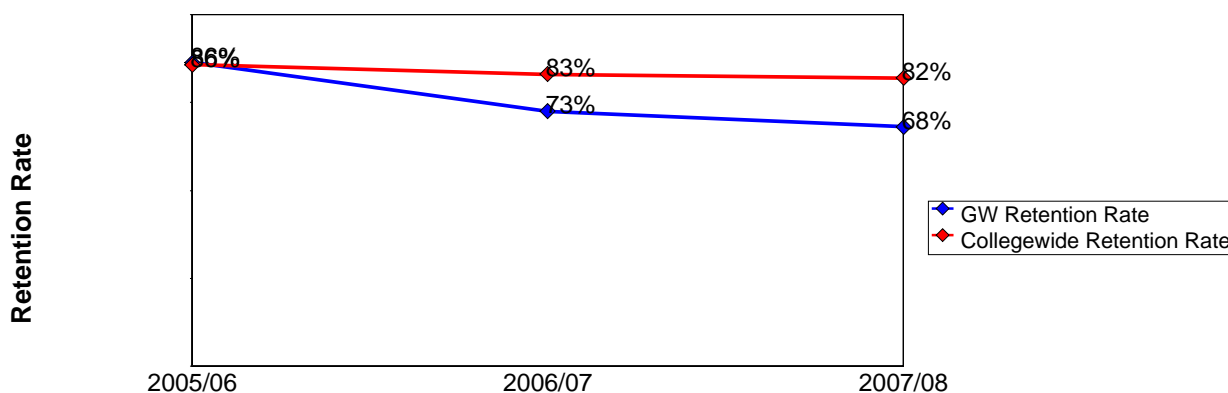
Enrollment by Educational Goal



Source: SMCCCD Data Warehouse

**Gateway Overall Success and Retention
2005/06 to 2007/08**

	Head Count	Retention Count	Retention Rate	Success Count	Success Rate
2005/06	236	204	86%	187	79%
2006/07	266	193	73%	125	47%
2007/08	223	152	68%	134	60%
Totals & Averages	725	549	76%	446	62%



Source: SMCCCD Data Warehouse

Retention Count: Number of students with A,B,C,D,F,CR,NC, I grades.

Retention Rate: The percentage of students who complete a course with a grade of A,B,C,D,F,CR,NC, I out of total enrollment.

Success Count: Number of students with A,B,C,CR grades.

Success Rate: The percentage of students who complete a course with a grade of A,B,C,CR out of total enrollments.

**Gateway Success and Retention Overall and by Subject
2005/06 to 2007/08**

Career and Personal Development

	Head Count	Retention Count	Retention Rate	Success Count	Success Rate
2005/06	41	37	90%	30	73%
2007/08	44	32	73%	30	68%

English

	Head Count	Retention Count	Retention Rate	Success Count	Success Rate
2005/06	71	60	85%	55	77%
2006/07	124	94	76%	57	46%
2007/08	37	24	65%	21	57%

Math

	Head Count	Retention Count	Retention Rate	Success Count	Success Rate
2005/06	88	77	88%	74	84%
2006/07	59	46	78%	29	49%
2007/08	64	44	69%	33	52%

Learning Skills

	Head Count	Retention Count	Retention Rate	Success Count	Success Rate
2007/08	43	30	70%	30	70%

Reading

	Head Count	Retention Count	Retention Rate	Success Count	Success Rate
2005/06	36	30	83%	28	78%
2006/07	83	53	64%	39	47%
2007/08	35	22	63%	20	57%

Source: SMCCCD Data Warehouse

Retention Count: Number of students with A,B,C,D,F,CR,NC, I grades.

Retention Rate: The percentage of students who complete a course with a grade of A,B,C,D,F,CR,NC, I out of total enrollments.

Success Count: Number of students with A,B,C,CR grades.

Success Rate: The percentage of students who complete a course with a grade of A,B,C,CR out of total enrollments.

**Gateway Grades by Subject
2005/06 to 2007/08**

Career and Personal Development

		A		B		C		D		F		W	
40403	2005/06	11	52%	4	19%	1	5%			1	5%	4	19%
	2007/08	3	13%	4	17%	2	9%	1	4%	1	4%	12	52%
53258	2005/06	10	50%	2	10%	2	10%	1	5%	5	25%		
91394	2007/08	18	86%	3	14%								

English

		A		B		C		D		CR		I		W	
40306	2005/06	4	24%	5	29%	4	24%							4	24%
	2006/07	1	3%	6	20%	4	13%					4	13%	15	50%
	2007/08	1	4%	2	9%	5	22%	2	9%					13	57%
40417	2005/06									13	72%			5	28%
	2006/07									5	45%			6	55%
53259	2005/06									15	94%			1	6%
53263	2005/06	6	40%	4	27%	4	27%							1	7%
80353	2006/07	5	16%	16	50%	4	13%							7	22%
	2007/08	6	43%	4	29%	3	21%					1	7%		
90555	2006/07									16	89%			2	11%

Math

		A		B		C		CR		D		F		NC		W	
40392	2005/06	6	33%	4	22%	7	39%									1	6%
40414	2005/06	6	33%	1	6%	7	39%									4	22%
40416	2005/06							17	77%							5	23%
	2007/08							8	50%							8	50%
40679	2006/07	2	7%	4	14%	3	11%			8	29%					11	39%
	2007/08			2	7%	6	22%			4	15%	3	11%			12	44%
53257	2005/06	3	25%	3	25%	4	33%			1	8%					1	8%
53267	2005/06							16	94%					1	6%		
90093	2006/07	2	20%	3	30%	3	30%			1	10%					1	10%
90092	2006/07	3	23%	1	8%	8	62%									1	8%
91164	2007/08	6	30%	7	35%	4	20%			3	15%						

Learning Skills

		CR		NC		W	
41587	2007/08	9	41%	5	23%	8	36%

Reading

		A		B		C		D		I		W	
40307	2005/06	5	28%	4	22%	4	22%					5	28%
	2006/07	6	15%	6	15%	6	15%			3	8%	19	48%
	2007/08	1	4%	4	17%	4	17%	1	4%			13	57%
53264	2005/06	6	38%	7	44%	2	13%					1	6%
80731	2006/07	2	6%	9	28%	10	31%					11	34%
	2007/08	6	50%	4	33%	1	8%			1	8%		

Source: SMCCCD Data Warehouse

Retention Count: Number of students with A,B,C,D,F,CR,NC, I grades.

Retention Rate: The percentage of students who complete a course with a grade of A,B,C,D,F,CR,NC, I out of total enrollments.

Success Count: Number of students with A,B,C,CR grades.

Success Rate: The percentage of students who complete a course with a grade of A,B,C,CR out of total enrollments.