



2007




Gateway

Learning Community Outcomes Report

Prepared by:

Office of Planning, Research & Institutional Effectiveness



Section Contents



Term Enrollment by Course

Term Enrollment by Demographic

Overall Success and Retention

Success and Retention by Subject

Grade Distribution by Subject



**Gateway Enrollment by Course: Summer 2005 to Fall 2007
Unduplicated Headcount**

<u>Term Desc</u>	<u>Crn</u>	<u>Subject</u>	<u>Section</u>	<u>Course Title</u>	<u>Count</u>
Summer 2005	53257	MATH	811GW	Pre-Algebra - GW	13
	53258	CRER	650GW	Gateway Seminar	20
	53259	ENGL	853GW	Writing Assistance Lab	17
	53263	ENGL	826GW	Basic Writing Skills	17
	53264	READ	826GW	Reading Improvement	17
	53267	MATH	650GW	Supervised Tutoring - Gateway	17
	Total				101
Spring 2006	40306	ENGL	826GW	Basic Writing Skills	18
	40307	READ	826GW	Reading Improvement	19
	40392	MATH	805GW	Fund of Math I - Gateway	19
	40403	CRER	650GW	Gateway Seminar	21
	40414	MATH	806GW	Fundamentals of Mathematics II	18
	40416	MATH	650GW	Supp. Math Instr. - Gateway	22
	40417	ENGL	853GW	Writ. Inst - Comp Ass. Gateway	19
Total				136	
Fall 2006	80353	ENGL	826GW	Basic Writ. Skills - Gateway	40
	80731	READ	826GW	Reading Improv. - Gateway	42
	90092	MATH	805GW	Fundamentals of Mathematics I	13
	90093	MATH	806GW	Fundamentals of Mathematics II	14
	90555	ENGL	853GW	Writing Instruction w/Computer	37
Total				146	
Spring 2007	40306	ENGL	826GW	Basic Writing Skills	33
	40307	READ	826GW	Reading Improvement	41
	40417	ENGL	853GW	Writ. Inst - Comp Ass. Gateway	17
	40679	MATH	811GW	Fundamentals of Math - Gateway	33
Total				124	
Fall 2007	80353	ENGL	826GW	Basic Writ. Skills - Gateway	14
	80731	READ	826GW	Reading Improv. - Gateway	12
	91164	MATH	811GW	Fundamentals of Math-Gateway	21
	91219	LSKL	853GW	Writing&Reading Assistance-GW	22
	91394	CRER	650GW	Seminar Group - Gateway	22
Total				91	

**Gateway Demographics
Summer 2005 - Fall 2007**

Gender

	Summer 2005		Spring 2006		Fall 2006		Spring 2007		Fall 2007		Total SU 05 - FA 07 and % Change SP 07 - FA 07	
Female	14	70%	13	54%	39	48%	30	34%	11	52%	107	-63%
Male	6	30%	10	42%	41	51%	58	65%	10	48%	125	-83%
Unreported			1	4%	1	1%	1	1%			3	-100%
Total	20	100%	24	100%	81	100%	89	100%	21	100%	235	-76%

Age

	Summer 2005		Spring 2006		Fall 2006		Spring 2007		Fall 2007		Total SU 05 - FA 07 and % Change SP 07 - FA 07	
Age 18-22	6	30%	11	46%	67	83%	76	85%	4	19%	164	-95%
Age 23-28	2	10%	2	8%	7	9%	9	10%	6	29%	26	-33%
Age 29-39	4	20%	2	8%	6	7%	4	4%	5	24%	21	25%
Age 40-49	6	30%	5	21%	1	1%			3	14%	15	
Age 50-59	2	10%	4	17%					2	10%	8	
Age 60+									1	5%	1	
Total	20	100%	24	100%	81	100%	89	100%	21	100%	235	-76%

Ethnicity

	Summer 2005		Spring 2006		Fall 2006		Spring 2007		Fall 2007		Total SU 05 - FA 07 and % Change SP 07 - FA 07	
African American	2	10%	4	17%	3	4%	8	9%			17	-100%
Asian	3	15%	4	17%	22	27%	26	29%	6	29%	61	-77%
Filipino	1	5%	2	8%	22	27%	18	20%	6	29%	49	-67%
Hispanic	12	60%	9	38%	16	20%	23	26%	4	19%	64	-83%
White	2	10%	4	17%	14	17%	10	11%	4	19%	34	-60%
Other									1	5%	1	
Unreported			1	4%	4	5%	4	4%			9	-100%
Total	20	100%	24	100%	81	100%	89	100%	21	100%	235	-76%

Enrollment Status

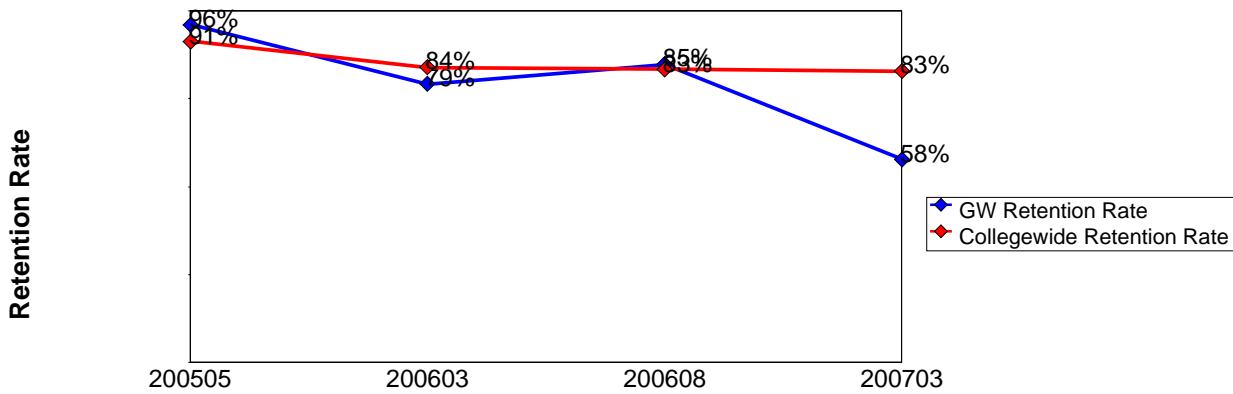
	Summer 2005		Spring 2006		Fall 2006		Spring 2007		Fall 2007		Total SU 05 - FA 07 and % Change SP 07 - FA 07	
Continuing	6	30%	4	17%	20	25%	53	60%	2	10%	85	-96%
First-Time	10	50%	11	46%	45	56%	19	21%	6	29%	91	-68%
First-Time Transfer	2	10%	1	4%	4	5%	6	7%	6	29%	19	0%
Returning			5	21%	9	11%	7	8%	4	19%	25	-43%
Returning Transfer	2	10%	3	13%	3	4%	4	4%	3	14%	15	-25%
Total	20	100%	24	100%	81	100%	89	100%	21	100%	235	-76%

Educational Goal

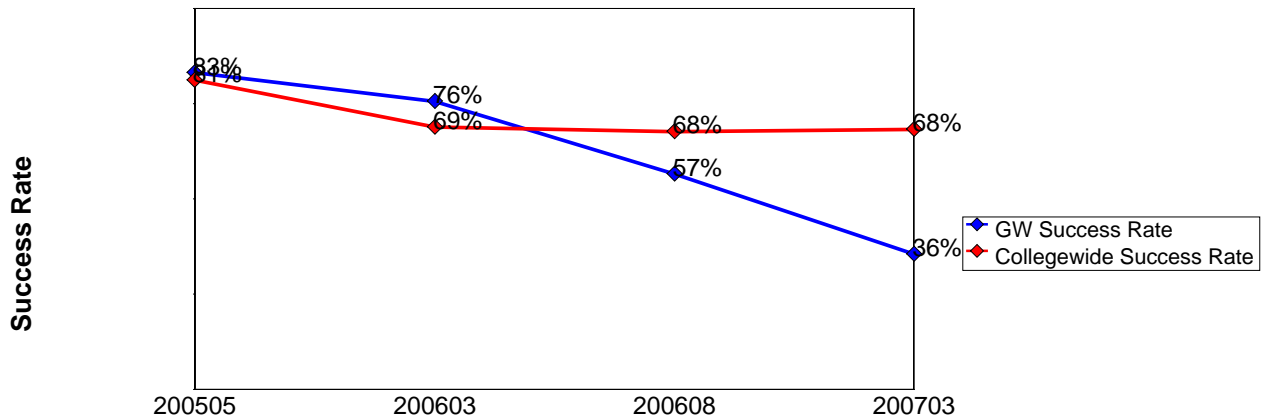
	Summer 2005		Spring 2006		Fall 2006		Spring 2007		Fall 2007		Total SU 05 - FA 07 and % Change SP 07 - FA 07	
AA/AS & Transfer	1	5%	10	42%	45	56%	52	58%	1	5%	109	-98%
AA/AS w/o Transfer	5	25%	1	4%	1	1%	10	11%	1	5%	18	-90%
Certificate w/o Transfer	1	5%	3	13%	5	6%	5	6%	6	29%	20	20%
Transfer w/o AA/AS	1	5%			6	7%	4	4%			11	-100%
Acquire Job Skills	5	25%	3	13%	4	5%	2	2%	10	48%	24	400%
Educational Development	1	5%			1	1%					2	
Improve Basic Skills	1	5%	2	8%	1	1%					4	
Undecided	2	10%	4	17%	18	22%	16	18%	2	10%	42	-88%
Update Job Skills	3	15%	1	4%					1	5%	5	
Total	20	100%	24	100%	81	100%	89	100%	21	100%	235	-76%

**Gateway Overall Success and Retention
Summer 2005 to Spring 2007**

	Head Count	Retention Count	Retention Rate	Success Count	Success Rate
Summer 2005	101	97	96%	84	83%
Spring 2006	135	107	79%	102	76%
Fall 2006	145	123	85%	82	57%
Spring 2007	121	70	58%	43	36%
Totals & Averages	502	397	79%	311	62%



200505= Summer 2005
 200603= Spring 2006
 200608= Fall 2006
 200703= Spring 2007



Source: SMCCD Data Warehouse

Retention Count: Number of students with A,B,C,D,F,CR,NC, I grades.

Retention Rate: The percentage of students who complete a course with a grade of A,B,C,D,F,CR,NC, I out of total enrollment.

Success Count: Number of students with A,B,C,CR grades.

Success Rate: The percentage of students who complete a course with a grade of A,B,C,CR out of total enrollments.

**Gateway Success and Retention Overall and by Subject
Summer 2005 to Spring 2007**

Career and Personal Development

	Head Count	Retention Count	Retention Rate	Success Count	Success Rate
Summer 2005	20	20	100%	14	70%
Spring 2006	21	17	81%	16	76%

English

	Head Count	Retention Count	Retention Rate	Success Count	Success Rate
Summer 2005	34	32	94%	29	85%
Spring 2006	37	28	76%	26	70%
Fall 2006	76	67	88%	41	54%
Spring 2007	48	27	56%	16	33%

Math

	Head Count	Retention Count	Retention Rate	Success Count	Success Rate
Summer 2005	30	29	97%	26	87%
Spring 2006	58	48	83%	47	81%
Fall 2006	27	25	93%	20	74%
Spring 2007					

Reading

	Head Count	Retention Count	Retention Rate	Success Count	Success Rate
Summer 2005	17	16	94%	15	88%
Spring 2006	19	14	74%	13	68%
Fall 2006	42	31	74%	21	50%
Spring 2007	41	22	54%	18	44%

Source: SMCCD Data Warehouse

Retention Count: Number of students with A,B,C,D,F,CR,NC, I grades.

Retention Rate: The percentage of students who complete a course with a grade of A,B,C,D,F,CR,NC, I out of total enrollments.

Success Count: Number of students with A,B,C,CR grades.

Success Rate: The percentage of students who complete a course with a grade of A,B,C,CR out of total enrollments.

**Gateway Grades by Subject
Summer 2005 to Spring 2007**

Career and Personal Development

		A		B		C		D		F		W	
40403	Spring 2006	11	52%	4	19%	1	5%			1	5%	4	19%
53258	Summer 2005	10	50%	2	10%	2	10%	1	5%	5	25%		

English

		A		B		C		CR		I		W	
40306	Spring 2006	4	22%	5	28%	4	22%			1	6%	4	22%
	Spring 2007	1	3%	6	20%	4	13%			4	13%	15	50%
40417	Spring 2006							13	68%	1	5%	5	26%
	Spring 2007							5	45%			6	55%
53259	Summer 2005							15	94%			1	6%
53263	Summer 2005	6	40%	4	27%	4	27%					1	7%
80353	Fall 2006	5	16%	16	50%	4	13%					7	22%
90555	Fall 2006							16	89%			2	11%

Math

		A		B		C		D		CR		NC		I		W	
40392	Spring 2006	6	33%	4	22%	7	39%									1	6%
40414	Spring 2006	6	33%	1	6%	6	33%							1	6%	4	22%
40416	Spring 2006									17	77%					5	23%
40679	Spring 2007	2	7%	4	14%	3	11%	8	29%							11	39%
53257	Summer 2005	3	25%	3	25%	4	33%	1	8%							1	8%
53267	Summer 2005									16	94%	1	6%				
90093	Fall 2006	2	20%	3	30%	3	30%	1	10%							1	10%
90092	Fall 2006	3	23%	1	8%	8	62%									1	8%

Reading

		A		B		C		I		W	
40307	Spring 2006	5	26%	4	21%	4	21%	1	5%	5	26%
	Spring 2007	6	15%	6	15%	6	15%	3	8%	19	48%
53264	Summer 2005	6	38%	7	44%	2	13%			1	6%
80731	Fall 2006	2	6%	9	28%	10	31%			11	34%

Source: SMCCD Data Warehouse

Retention Count: Number of students with A,B,C,D,F,CR,NC, I grades.

Retention Rate: The percentage of students who complete a course with a grade of A,B,C,D,F,CR,NC, I out of total enrollments.

Success Count: Number of students with A,B,C,CR grades.

Success Rate: The percentage of students who complete a course with a grade of A,B,C,CR out of total enrollments.