



2008



**Skyline**  
**COLLEGE**


**ACHIEVE**

**ASTEP**

# Learning Community Outcomes Report

Prepared by:

Office of Planning, Research & Institutional Effectiveness



# Section Contents



Term Enrollment by Course

Term Enrollment by Demographic

Overall Success and Retention

Success and Retention by Subject

Grade Distribution by Subject



**ASTEP Enrollment by Course: 2003/04 to 2007/08**  
**Unduplicated Head Count**

<b>Term Desc</b>	<b>Crn</b>	<b>Subject Code</b>	<b>Section</b>	<b>Course Title</b>	<b>Counts</b>
<b>Fall 2003</b>	80734	READ	836AQ	Academic Reading Strategies	33
	83165	CRER	650AQ	ASTEP Seminar	8
	83826	ENGL	836AQ	Writing Development	28
	89583	MATH	120AQ	Intermediate Algebra-ASTEP	49
	<b>Total</b>				<b>118</b>
<b>Fall 2004</b>	80734	READ	836AQ	Academic Reading Strategies	31
	83165	CRER	650AQ	ASTEP Seminar	9
	83826	ENGL	836AQ	Intro to College Composition	36
	84371	PSYC	268AQ	Black Psychology	28
	89188	SPCH	150AQ	Comm. Across Cultures	32
	89873	MATH	110AQ	Elementary Algebra-ASTEP	47
<b>Total</b>				<b>183</b>	
<b>Fall 2005</b>	83165	CRER	650AQ	ASTEP Seminar	19
	84371	PSYC	268AQ	Black Psychology	23
	84378	MATH	200AQ	Probability & Statistics:ASTEP	8
	88372	PLSC	200AQ	National, State & Local Govt	47
	89188	SPCH	150AQ	Intercultural Communication	34
	90073	ENGL	846AQ	Read & Write Conn. ASTEP	28
<b>Total</b>				<b>159</b>	
<b>Fall 2006</b>	83165	CRER	650AQ	ASTEP Seminar	23
	84371	PSYC	268AQ	Black Psychology	28
	88372	PLSC	200AQ	National, State & Local Govt	36
	89188	SPCH	150AQ	Intercultural Communication	30
	90073	ENGL	846AQ	Read & Write Conn. ASTEP	27
	90615	MATH	110AQ	Elementary Algebra - ASTEP	12
<b>Total</b>				<b>156</b>	
<b>Fall 2007</b>	84371	PSYC	268AQ	Black Psychology	8
	88372	PLSC	200AQ	National, State & Local Govt	25
	89188	SPCH	150AQ	Intercultural Communication	41
	90073	ENGL	846AQ	Read & Write Conn. ASTEP	32
	90615	MATH	110AQ	Elementary Algebra - ASTEP	37
	91386	COUN	100AQ	College Success - ASTEP	43
<b>Total</b>				<b>186</b>	
<b>Spring 2004</b>	30230	CRER	650AQ	ASTEP Seminar	6
	30534	MATH	110AQ	Elementary Algebra - ASTEP	31
	33325	ENGL	100AQ	Composition	22
	34142	SPCH	150AQ	Communicating Across Cultures	31
	37643	HIST	244AQ	African American History	46
<b>Total</b>				<b>136</b>	
<b>Spring 2005</b>	30230	CRER	650AQ	ASTEP Seminar	11
	33325	ENGL	100AQ	Composition	25
	37643	HIST	244AQ	African American History	40
	39581	MATH	120AQ	Intermediate Algebra	44
<b>Total</b>				<b>120</b>	

Source: SMCCCD Data Warehouse

**ASTEP Enrollment by Course: 2003/04 to 2007/08**  
**Unduplicated Head Count**

<b>Term Desc</b>	<b>Crn</b>	<b>Subject Code</b>	<b>Section</b>	<b>Course Title</b>	<b>Counts</b>
<b>Spring 2006</b>	30230	CRER	650AQ	ASTEP Seminar	12
	33325	ENGL	100AQ	Composition	26
	37643	HIST	244AQ	African American History	34
	40231	MATH	110AQ	Elementary Algebra - ASTEP	12
	40300	PSYC	268AQ	Black Psychology	17
	<b>Total</b>				<b>101</b>
<b>Spring 2007</b>	30230	CRER	650AQ	ASTEP Seminar	23
	33325	ENGL	100AQ	Composition	20
	37643	HIST	244AQ	African American History	21
	40300	PSYC	268AQ	Black Psychology	17
	40613	SPCH	150AQ	Intercultural Communication	24
	40670	MATH	120AQ	Intermediate Algebra-ASTEP	16
<b>Total</b>				<b>121</b>	
<b>Spring 2008</b>	33325	ENGL	100AQ	Composition	27
	37643	HIST	244AQ	African American History	43
	40122	COUN	100AQ	College Success - ASTEP	54
	40231	MATH	110AQ	Elementary Algebra - ASTEP	15
	40300	PSYC	268AQ	Black Psychology	10
	40613	SPCH	150AQ	Intercultural Communication	33
	40670	MATH	120AQ	Intermediate Algebra-ASTEP	48
	40953	PLSC	210AQ	American Politics	38
<b>Total</b>				<b>268</b>	

Source: SMCCCD Data Warehouse

## ASTEP Enrollment Report - Fall 2003 to 2007

### Enrollment by Gender

	Fall 2003		Fall 2004		Fall 2005		Fall 2006		Fall 2007		Change FA06-FA07	5 Year Row Total & Average	
	Count	Percent	Count	Percent	Count	Percent	Count	Percent	Count	Percent		Count	Percent
Female	52	47%	70	45%	61	45%	65	48%	73	48%	32,100%	321	47%
Male	59	53%	85	55%	74	54%	69	51%	75	50%	36,200%	362	53%
Unreported					1	1%	2	1%	3	2%	600%	6	1%
<b>Column Total</b>	<b>111</b>	<b>100%</b>	<b>155</b>	<b>100%</b>	<b>136</b>	<b>100%</b>	<b>136</b>	<b>100%</b>	<b>151</b>	<b>100%</b>	<b>68,900%</b>	<b>689</b>	<b>100%</b>

### Enrollment by Ethnicity

	Fall 2003		Fall 2004		Fall 2005		Fall 2006		Fall 2007		Change FA06-FA07	5 Year Row Total & Average	
	Count	Percent	Count	Percent	Count	Percent	Count	Percent	Count	Percent		Count	Percent
African American	15	14%	42	27%	31	23%	45	33%	44	29%	-2%	177	26%
Asian	30	27%	31	20%	37	27%	21	15%	29	19%	38%	148	21%
Filipino	16	14%	28	18%	19	14%	12	9%	17	11%	42%	92	13%
Hispanic	24	22%	34	22%	28	21%	28	21%	26	17%	-7%	140	20%
Native American							1	1%	3	2%	200%	4	1%
Other	3	3%	3	2%			5	4%	4	3%	-20%	15	2%
White	20	18%	14	9%	16	12%	15	11%	16	11%	7%	81	12%
Unreported	3	3%	3	2%	5	4%	9	7%	12	8%	33%	32	5%
<b>Column Total</b>	<b>111</b>	<b>100%</b>	<b>155</b>	<b>100%</b>	<b>136</b>	<b>100%</b>	<b>136</b>	<b>100%</b>	<b>151</b>	<b>100%</b>	<b>11%</b>	<b>689</b>	<b>100%</b>

### Enrollment by Age

	Fall 2003		Fall 2004		Fall 2005		Fall 2006		Fall 2007		Change FA06-FA07	5 Year Row Total & Average	
	Count	Percent	Count	Percent	Count	Percent	Count	Percent	Count	Percent		Count	Percent
Under 18	1	1%			3	2%	2	1%	1	1%	-50%	7	1%
Age 18-22	93	84%	121	78%	105	77%	117	86%	111	74%	-5%	547	79%
Age 23-28	10	9%	21	14%	19	14%	12	9%	23	15%	92%	85	12%
Age 29-39	5	5%	9	6%	6	4%	4	3%	7	5%	75%	31	4%
Age 40-49	2	2%	3	2%	3	2%			2	1%		10	1%
Age 50-59			1	1%			1	1%	3	2%	200%	5	1%
Age 60+									4	3%		4	1%
<b>Column Total</b>	<b>111</b>	<b>100%</b>	<b>155</b>	<b>100%</b>	<b>136</b>	<b>100%</b>	<b>136</b>	<b>100%</b>	<b>151</b>	<b>100%</b>	<b>11%</b>	<b>689</b>	<b>100%</b>

### Enrollment by Status

	Fall 2003		Fall 2004		Fall 2005		Fall 2006		Fall 2007		Change FA06-FA07	5 Year Row Total & Average	
	Count	Percent	Count	Percent	Count	Percent	Count	Percent	Count	Percent		Count	Percent
Continuing	67	60%	65	42%	72	53%	65	48%	96	64%	48%	365	53%
Currently K-12					1	1%			1	1%		2	0%
First-Time	28	25%	54	35%	32	24%	47	35%	31	21%	-34%	192	28%
First-Time Transfer	7	6%	14	9%	11	8%	9	7%	11	7%	22%	52	8%
Returning	8	7%	20	13%	11	8%	10	7%	7	5%	-30%	56	8%
Returning Transfer	1	1%	2	1%	9	7%	5	4%	5	3%	0%	22	3%
<b>Column Total</b>	<b>111</b>	<b>100%</b>	<b>155</b>	<b>100%</b>	<b>136</b>	<b>100%</b>	<b>136</b>	<b>100%</b>	<b>151</b>	<b>100%</b>	<b>11%</b>	<b>689</b>	<b>100%</b>

Source: SMCCCD Data Warehouse

\*Note: Counts and percents are based on census figures.

**Enrollment by Units**

	Fall 2003		Fall 2004		Fall 2005		Fall 2006		Fall 2007		Change FA06-FA07	5 Year Row Total & Average	
Full-time			1	1%					3	2%		4	1%
Part-time	111	100%	154	99%	136	100%	136	100%	148	98%	9%	685	99%
<b>Column Total</b>	<b>111</b>	<b>100%</b>	<b>155</b>	<b>100%</b>	<b>136</b>	<b>100%</b>	<b>136</b>	<b>100%</b>	<b>151</b>	<b>100%</b>	<b>11%</b>	<b>689</b>	<b>100%</b>

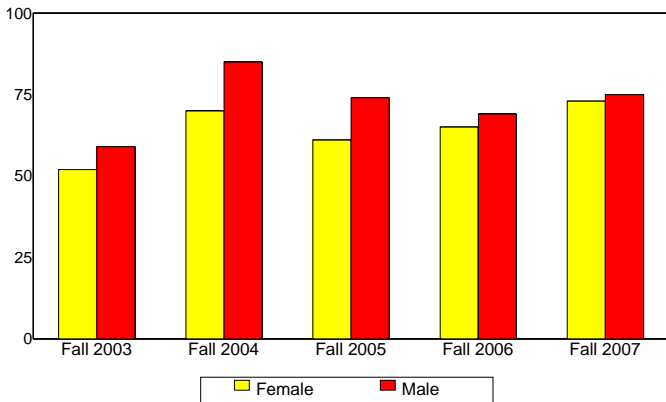
**Enrollment by Course-Taking Pattern**

	Fall 2003		Fall 2004		Fall 2005		Fall 2006		Fall 2007		Change FA06-FA07	5 Year Row Total & Average	
Day	111	100%	155	100%	136	100%	136	100%	143	95%	5%	681	99%
Evening									8	5%		8	1%
<b>Column Total</b>	<b>111</b>	<b>100%</b>	<b>155</b>	<b>100%</b>	<b>136</b>	<b>100%</b>	<b>136</b>	<b>100%</b>	<b>151</b>	<b>100%</b>	<b>11%</b>	<b>689</b>	<b>100%</b>

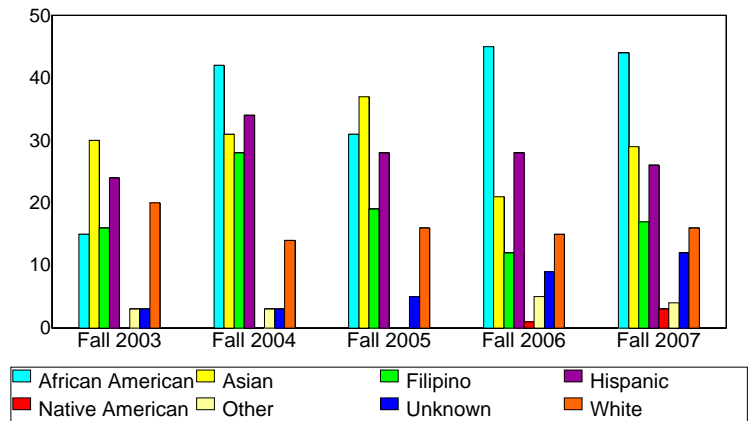
**Enrollment by Educational Goal**

	Fall 2003		Fall 2004		Fall 2005		Fall 2006		Fall 2007		Change FA06-FA07	5 Year Row Total & Average	
Transfer	79	71%	106	68%	98	72%	114	84%	101	67%	-11%	498	72%
AA/AS w/o Transfer	9	8%	9	6%	11	8%	4	3%	3	2%	-25%	36	5%
Acquire/Update Job Skills			3	2%	1	1%			2	1%		6	1%
Certificate w/o Transfer	3	3%	4	3%	2	1%	1	1%	1	1%	0%	11	2%
Complete HS Credits	1	1%	1	1%			1	1%	1	1%	0%	4	1%
Educational Development	1	1%	2	1%	3	2%	4	3%	8	5%	100%	18	3%
Undecided	18	16%	30	19%	21	15%	12	9%	15	10%	25%	96	14%
Unreported									20	13%		20	3%
<b>Column Total</b>	<b>111</b>	<b>100%</b>	<b>155</b>	<b>100%</b>	<b>136</b>	<b>100%</b>	<b>136</b>	<b>100%</b>	<b>151</b>	<b>100%</b>	<b>11%</b>	<b>689</b>	<b>100%</b>

**Enrollment by Gender**



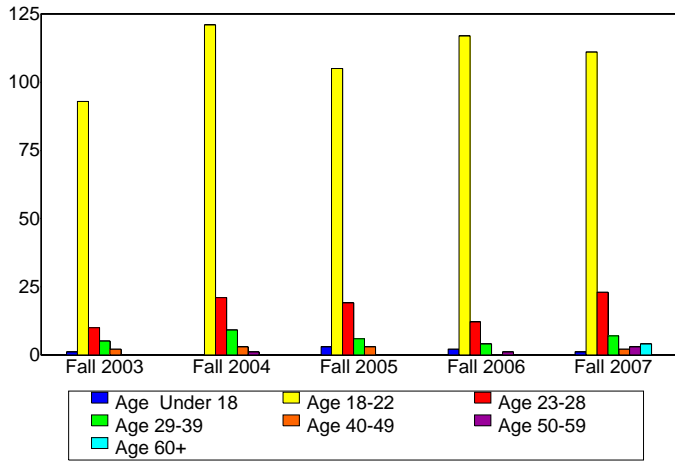
**Enrollment by Ethnicity**



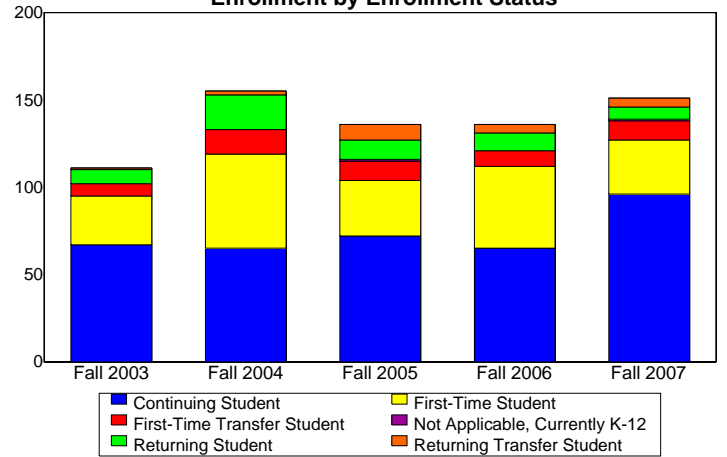
Source: SMCCCD Data Warehouse

\*Note: Counts and percents are based on census figures.

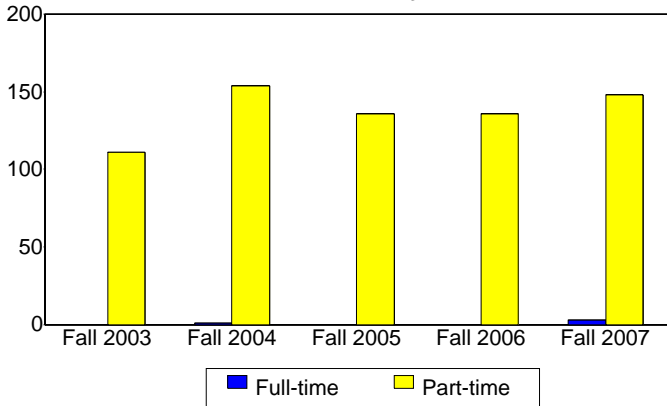
**Enrollment by Student Age**



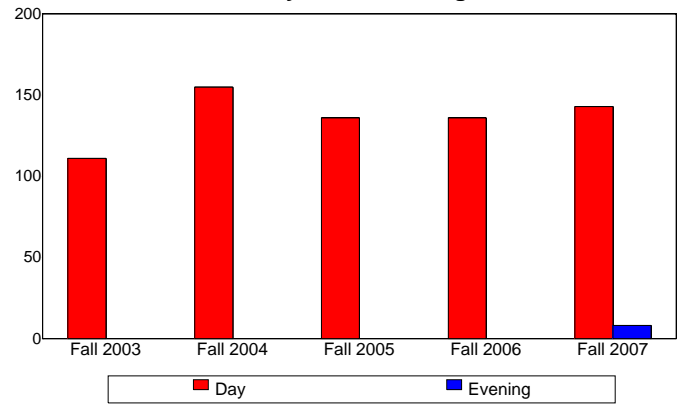
**Enrollment by Enrollment Status**



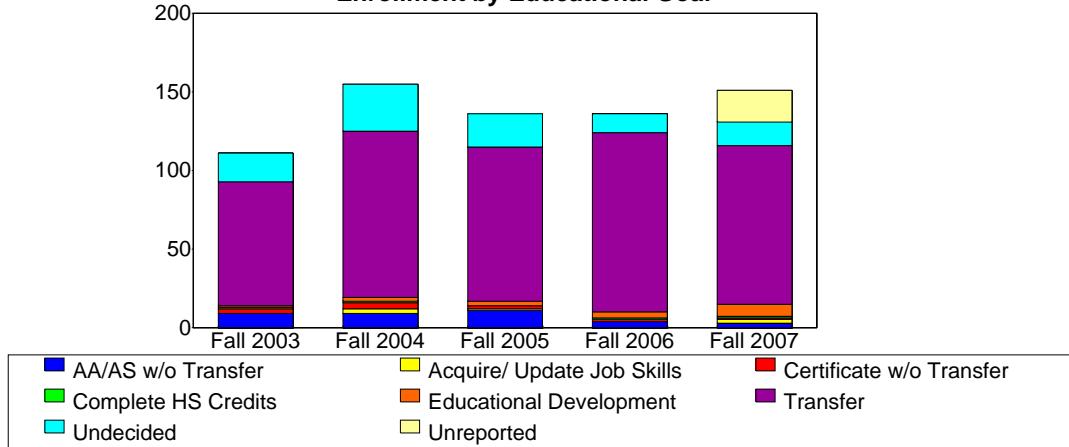
**Enrollment by Units**



**Enrollment by Course-Taking Pattern**



**Enrollment by Educational Goal**



Source: SMCCCD Data Warehouse

## ASTEP Enrollment Report - Spring 2004 to 2008

### Enrollment by Gender

	Spring 2004		Spring 2005		Spring 2006		Spring 2007		Spring 2008		Change	5 Year Row	
	Count	%	Count	%	Count	%	Count	%	Count	%	SP07-SP08	Total & Average	
Female	62	52%	55	46%	43	48%	44	45%	94	41%	114%	298	45%
Male	65	48%	60	53%	43	52%	53	54%	118	56%	123%	339	54%
Unreported			1	1%			1	1%	5	3%	400%	7	2%
<b>Column Total</b>	<b>127</b>	<b>100%</b>	<b>116</b>	<b>100%</b>	<b>86</b>	<b>100%</b>	<b>98</b>	<b>100%</b>	<b>217</b>	<b>100%</b>	<b>121%</b>	<b>644</b>	<b>100%</b>

### Enrollment by Ethnicity

	Spring 2004		Spring 2005		Spring 2006		Spring 2007		Spring 2008		Change	5 Year Row	
	Count	%	Count	%	Count	%	Count	%	Count	%	SP07-SP08	Total & Average	
African American	34	26%	34	27%	28	35%	39	43%	64	32%	64%	199	32%
Asian	20	14%	26	23%	16	19%	6	6%	43	21%	617%	111	18%
Filipino	10	9%	14	12%	13	14%	12	12%	28	14%	133%	77	13%
Hispanic	29	20%	18	17%	14	17%	13	12%	34	14%	162%	108	15%
Native American	1	1%					1	0%	1	0%	0%	3	0%
Other	8	8%	7	7%			1	1%	6	3%	500%	22	4%
White	17	16%	10	7%	9	8%	14	13%	21	8%	50%	71	10%
Unreported	8	7%	7	7%	6	7%	12	12%	20	9%	67%	53	9%
<b>Column Total</b>	<b>127</b>	<b>100%</b>	<b>116</b>	<b>100%</b>	<b>86</b>	<b>100%</b>	<b>98</b>	<b>100%</b>	<b>217</b>	<b>100%</b>	<b>121%</b>	<b>644</b>	<b>100%</b>

### Enrollment by Age

	Spring 2004		Spring 2005		Spring 2006		Spring 2007		Spring 2008		Change	5 Year Row	
	Count	%	Count	%	Count	%	Count	%	Count	%	SP07-SP08	Total & Average	
Under 18	2	2%	1	1%			3	3%	1	1%	-67%	7	1%
Age 18-22	91	73%	78	69%	64	77%	77	78%	166	83%	116%	476	78%
Age 23-28	26	20%	22	20%	12	13%	13	14%	33	12%	154%	106	15%
Age 29-39	8	5%	12	7%	6	7%	3	2%	14	4%	367%	43	5%
Age 40-49					3	2%	1	2%	3	1%	200%	7	1%
Age 50-59			3	3%	1	0%	1	1%			-100%	5	1%
<b>Column Total</b>	<b>127</b>	<b>100%</b>	<b>116</b>	<b>100%</b>	<b>86</b>	<b>100%</b>	<b>98</b>	<b>100%</b>	<b>217</b>	<b>100%</b>	<b>121%</b>	<b>644</b>	<b>100%</b>

### Enrollment by Status

	Spring 2004		Spring 2005		Spring 2006		Spring 2007		Spring 2008		Change	5 Year Row	
	Count	%	Count	%	Count	%	Count	%	Count	%	SP07-SP08	Total & Average	
Continuing	108	86%	96	83%	68	80%	75	72%	165	73%	120%	512	77%
Currently K-12									4	3%		4	1%
First-Time	10	8%	7	7%	8	10%	8	9%	15	10%	88%	48	9%
First-Time Transfer	2	2%	6	6%	4	5%	8	12%	16	9%	100%	36	7%
Returning	7	4%	5	2%	4	5%	4	4%	9	3%	125%	29	4%
Returning Transfer			2	2%	2	0%	3	3%	8	3%	167%	15	2%
<b>Column Total</b>	<b>127</b>	<b>100%</b>	<b>116</b>	<b>100%</b>	<b>86</b>	<b>100%</b>	<b>98</b>	<b>100%</b>	<b>217</b>	<b>100%</b>	<b>121%</b>	<b>644</b>	<b>100%</b>

Source: SMCCCD Data Warehouse

\*Note: Counts and percents are based on census figures.

**Enrollment by Units**

	Spring 2004		Spring 2005		Spring 2006		Spring 2007		Spring 2008		Change SP07-SP08	5 Year Row Total & Average	
Full-time							2	2%	1	0%	-50%	3	0%
Part-time	127	100%	116	100%	86	100%	96	98%	216	100%	125%	641	100%
<b>Column Total</b>	<b>127</b>	<b>100%</b>	<b>116</b>	<b>100%</b>	<b>86</b>	<b>100%</b>	<b>98</b>	<b>100%</b>	<b>217</b>	<b>100%</b>	<b>121%</b>	<b>644</b>	<b>100%</b>

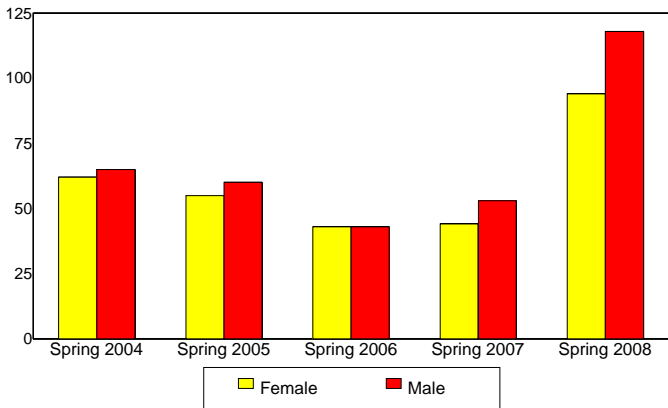
**Enrollment by Course-Taking Pattern**

	Spring 2004		Spring 2005		Spring 2006		Spring 2007		Spring 2008		Change SP07-SP08	5 Year Row Total & Average	
Day	127	100%	116	100%	86	100%	98	100%	217	100%	121%	644	100%
<b>Column Total</b>	<b>127</b>	<b>100%</b>	<b>116</b>	<b>100%</b>	<b>86</b>	<b>100%</b>	<b>98</b>	<b>100%</b>	<b>217</b>	<b>100%</b>	<b>121%</b>	<b>644</b>	<b>100%</b>

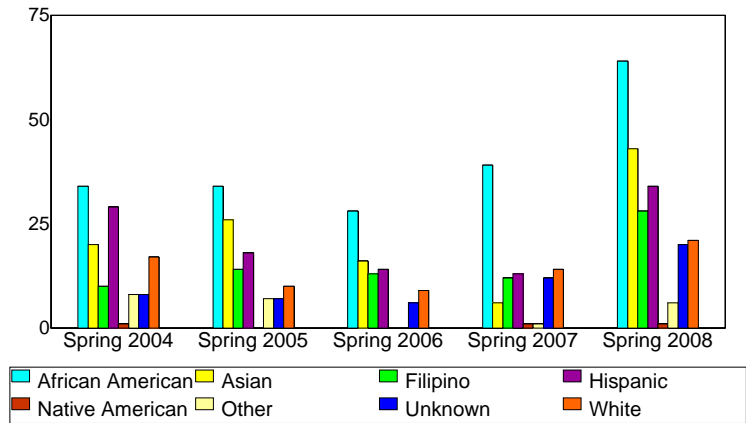
**Enrollment by Educational Goal**

	Spring 2004		Spring 2005		Spring 2006		Spring 2007		Spring 2008		Change SP07-SP08	5 Year Row Total & Average	
Transfer	94	76%	83	73%	65	77%	73	74%	130	60%	78%	445	68%
Complete HS Credits									1	1%		1	0%
Educational Development	1	1%	1	1%	1	1%	5	7%	5	2%	0%	13	2%
AA/AS w/o Transfer	13	10%	10	7%	9	10%	6	6%	9	4%	50%	47	6%
Acquire/Update Job Skills	1	0%	2	2%	1	1%	3	3%	4	2%	33%	11	2%
Certificate w/o Transfer	5	3%	1	1%	1	1%	2	2%	2	1%	0%	11	1%
Undecided	13	10%	19	16%	9	9%	9	8%	14	8%	56%	64	10%
Unreported									52	22%		52	10%
<b>Column Total</b>	<b>127</b>	<b>100%</b>	<b>116</b>	<b>100%</b>	<b>86</b>	<b>100%</b>	<b>98</b>	<b>100%</b>	<b>217</b>	<b>100%</b>	<b>121%</b>	<b>644</b>	<b>100%</b>

**Enrollment by Gender**



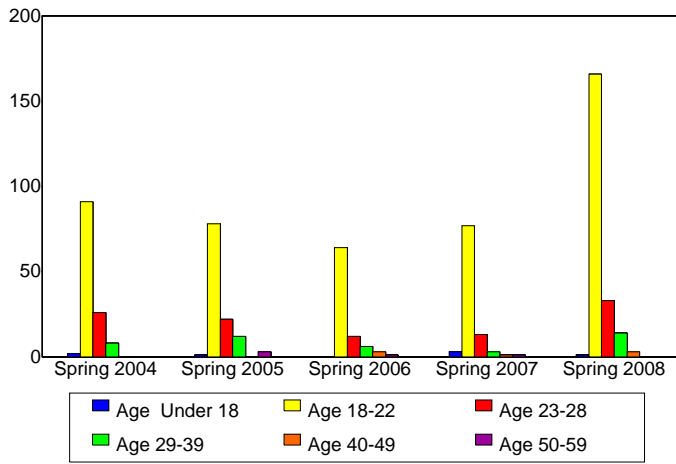
**Enrollment by Ethnicity**



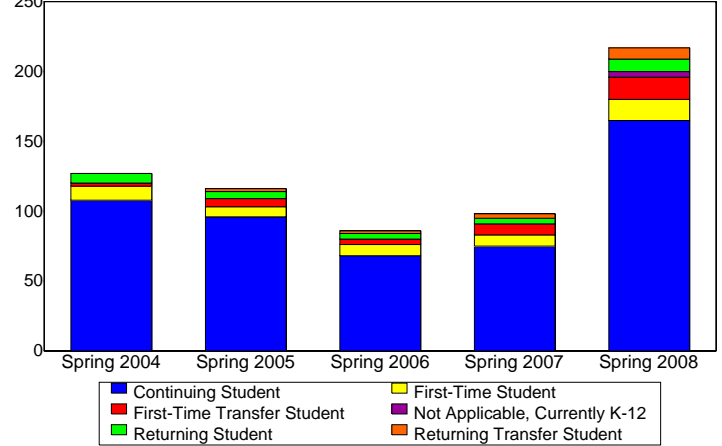
Source: SMCCCD Data Warehouse

\*Note: Counts and percents are based on census.

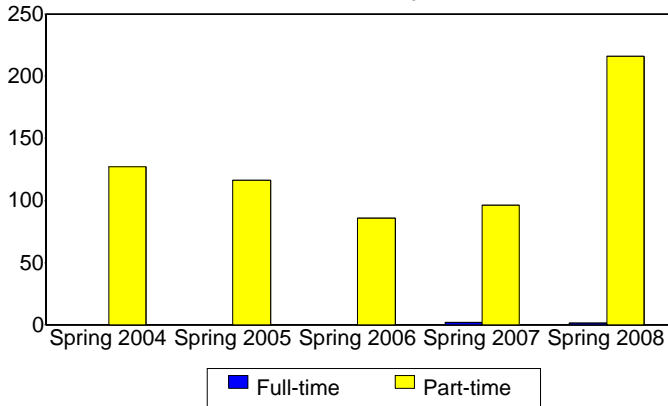
**Enrollment by Student Age**



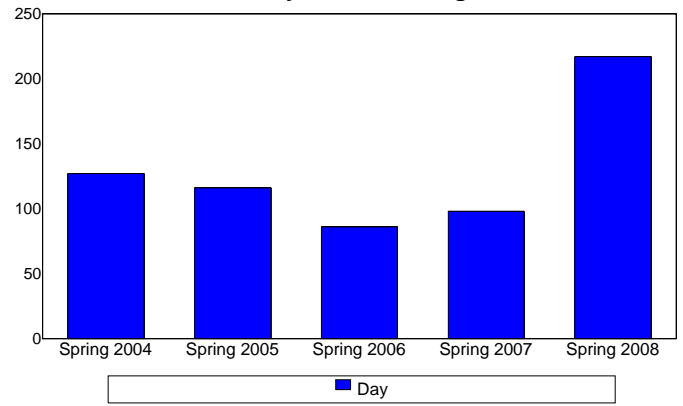
**Enrollment by Enrollment Status**



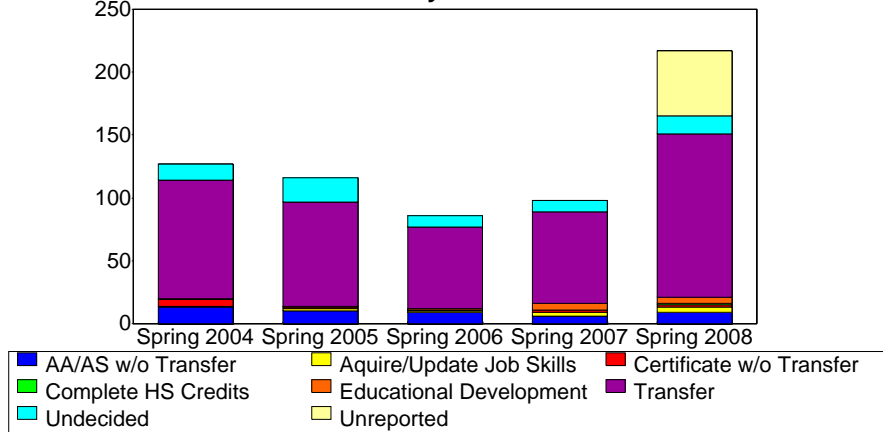
**Enrollment by Units**



**Enrollment by Course-Taking Pattern**



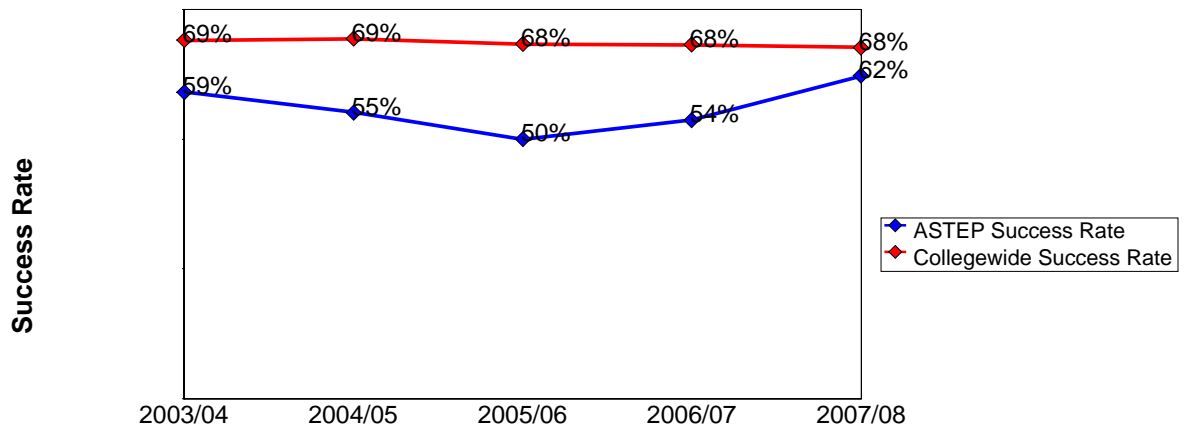
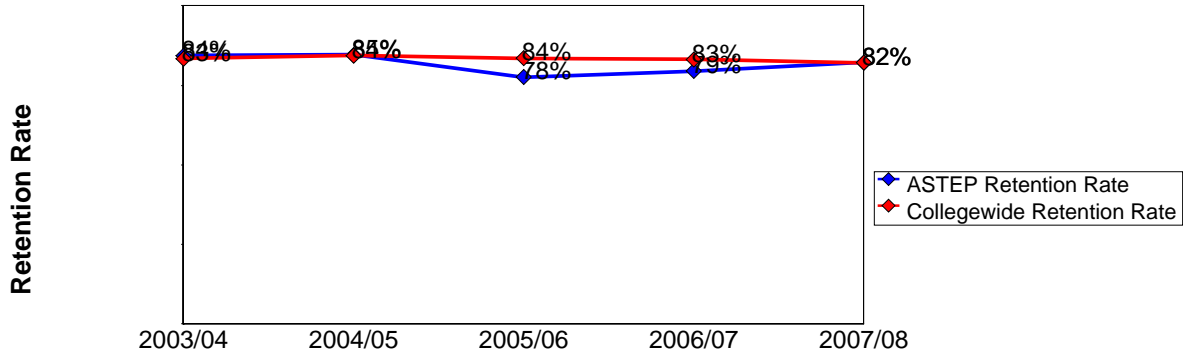
**Enrollment by Educational Goal**



Source: SMCCCD Data Warehouse

**ASTEP Overall Success and Retention  
2003/04 to 2007/08**

	Head Count	Retention Count	Retention Rate	Success Count	Success Rate
<b>2003/04</b>	242	204	84%	143	59%
<b>2004/05</b>	292	247	85%	161	55%
<b>2005/06</b>	236	183	78%	118	50%
<b>2006/07</b>	268	213	79%	144	54%
<b>2007/08</b>	447	369	83%	280	63%



Source: SMCCCD Data Warehouse

Retention Count: Number of students with A,B,C,D,F,CR,NC, I grades.

Retention Rate: The percentage of students who complete a course with a grade of A,B,C,D,F,CR,NC, I out of total enrollments.

Success Count: Number of students with A,B,C,CR grades.

Success Rate: The percentage of students who complete a course with a grade of A,B,C,CR out of total enrollments.

**ASTEP Success and Retention by Subject  
2003/04 to 2007/08**

**Career and Personal Development**

	<b>Head Count</b>	<b>Retention Count</b>	<b>Retention Rate</b>	<b>Success Count</b>	<b>Success Rate</b>
<b>2003/04</b>	14	13	93%	6	43%
<b>2004/05</b>	20	16	80%	6	30%
<b>2005/06</b>	30	26	87%	12	40%
<b>2006/07</b>	46	41	89%	24	52%

**Counseling**

	<b>Head Count</b>	<b>Retention Count</b>	<b>Retention Rate</b>	<b>Success Count</b>	<b>Success Rate</b>
<b>2007/08</b>	91	82	90%	65	71%

**English**

	<b>Head Count</b>	<b>Retention Count</b>	<b>Retention Rate</b>	<b>Success Count</b>	<b>Success Rate</b>
<b>2003/04</b>	46	40	87%	31	67%
<b>2004/05</b>	58	47	81%	40	69%
<b>2005/06</b>	50	37	74%	25	50%
<b>2006/07</b>	45	36	80%	26	58%
<b>2007/08</b>	59	49	83%	39	66%

**History**

	<b>Head Count</b>	<b>Retention Count</b>	<b>Retention Rate</b>	<b>Success Count</b>	<b>Success Rate</b>
<b>2003/04</b>	43	38	88%	20	47%
<b>2004/05</b>	37	32	86%	11	30%
<b>2005/06</b>	30	24	80%	18	60%
<b>2006/07</b>	21	18	86%	12	57%
<b>2007/08</b>	42	37	88%	19	45%

**Math**

	<b>Head Count</b>	<b>Retention Count</b>	<b>Retention Rate</b>	<b>Success Count</b>	<b>Success Rate</b>
<b>2003/04</b>	77	66	86%	49	64%
<b>2004/05</b>	90	79	88%	58	64%
<b>2005/06</b>	20	15	75%	11	55%
<b>2006/07</b>	26	23	88%	18	69%
<b>2007/08</b>	99	82	83%	65	66%

Source: SMCCCD Data Warehouse

Retention Count: Number of students with A,B,C,D,F,CR,NC, I grades.

Retention Rate: The percentage of students who complete a course with a grade of A,B,C,D,F,CR,NC, I out of total enrollments.

Success Count: Number of students with A,B,C,CR grades.

Success Rate: The percentage of students who complete a course with a grade of A,B,C,CR out of total enrollments.

**Political Science**

	<b>Head Count</b>	<b>Retention Count</b>	<b>Retention Rate</b>	<b>Success Count</b>	<b>Success Rate</b>
<b>2005/06</b>	41	31	76%	23	56%
<b>2006/07</b>	35	21	60%	19	54%
<b>2007/08</b>	59	42	71%	37	63%

**Psychology**

	<b>Head Count</b>	<b>Retention Count</b>	<b>Retention Rate</b>	<b>Success Count</b>	<b>Success Rate</b>
<b>2004/05</b>	27	21	78%	9	33%
<b>2005/06</b>	33	23	70%	8	24%
<b>2006/07</b>	42	29	69%	12	29%
<b>2007/08</b>	18	9	50%	1	6%

**Reading**

	<b>Head Count</b>	<b>Retention Count</b>	<b>Retention Rate</b>	<b>Success Count</b>	<b>Success Rate</b>
<b>2003/04</b>	32	22	69%	15	47%
<b>2004/05</b>	28	24	86%	16	57%

**Speech**

	<b>Head Count</b>	<b>Retention Count</b>	<b>Retention Rate</b>	<b>Success Count</b>	<b>Success Rate</b>
<b>2003/04</b>	30	25	83%	22	73%
<b>2004/05</b>	32	28	88%	21	66%
<b>2005/06</b>	32	27	84%	21	66%
<b>2006/07</b>	53	45	85%	33	62%
<b>2007/08</b>	71	60	85%	47	66%

Source: SMCCCD Data Warehouse

Retention Count: Number of students with A,B,C,D,F,CR,NC, I grades.

Retention Rate: The percentage of students who complete a course with a grade of A,B,C,D,F,CR,NC, I out of total enrollment.

Success Count: Number of students with A,B,C,CR grades.

Success Rate: The percentage of students who complete a course with a grade of A,B,C,CR out of total enrollments.

**ASTEP Grades by Subject  
2003/04 to 2007/08**

**Career and Personal Development**

		A		B		C		D		F		W	
<b>650AQ</b>	2003/04	4	29%	1	7%	1	7%	6	43%	1	7%	1	7%
	2004/05	5	25%	1	5%			3	15%	7	35%	4	20%
	2005/06	6	20%	3	10%	3	10%	7	23%	7	23%	4	13%
	2006/07	3	7%	16	35%	5	11%	8	17%	9	20%	5	11%

**Counseling**

		A		B		C		D		F		W	
<b>100AQ</b>	2007/08	19	22%	32	37%	13	15%	4	5%	10	11%	9	10%

**English**

		A		B		C		D		F		I		W	
<b>100AQ</b>	2003/04	2	11%	4	22%	6	33%	1	6%	2	11%			3	17%
	2004/05	1	4%	3	13%	9	39%	1	4%	3	13%			6	26%
	2005/06			4	17%	10	43%	3	13%	4	17%			2	9%
	2006/07			4	21%	5	26%	4	21%	1	5%			5	26%
	2007/08	4	15%	6	22%	5	19%	2	7%	1	4%	3	11%	6	22%
<b>836AQ</b>	2003/04	2	7%	10	36%	7	25%	1	4%	5	18%			3	11%
	2004/05	6	17%	7	20%	14	40%	2	6%	1	3%			5	14%
<b>846AQ</b>	2005/06			3	11%	8	30%	5	19%					11	41%
	2006/07	5	19%	5	19%	7	27%	2	8%	3	12%			4	15%
	2007/08	5	16%	8	25%	11	34%			3	9%	1	3%	4	13%

**History**

		A		B		C		D		F		W	
<b>244AQ</b>	2003/04	2	5%	8	19%	10	24%	7	17%	11	26%	4	10%
	2004/05	1	3%	4	11%	6	16%	3	8%	18	49%	5	14%
	2005/06			5	17%	13	43%			6	20%	6	20%
	2006/07	1	5%			11	52%	3	14%	3	14%	3	14%
	2007/08	3	7%	7	17%	9	21%	5	12%	13	31%	5	12%

**Math**

		A		B		C		D		F		I		W	
<b>110AQ</b>	2003/04	2	7%	5	17%	5	17%	3	10%	8	28%			6	21%
	2004/05	1	2%	12	26%	18	39%	3	7%	7	15%			5	11%
	2005/06	1	8%	3	25%	2	17%	2	17%	1	8%			3	25%
	2006/07			5	45%	3	27%			2	18%			1	9%
	2007/08	2	4%	18	35%	16	31%	3	6%	3	6%	1	2%	8	16%
<b>120AQ</b>	2003/04	4	9%	13	28%	20	43%	6	13%					4	9%
	2004/05			8	19%	19	44%	9	21%	2	5%			5	12%
	2006/07			5	33%	5	33%	3	20%					2	13%
	2007/08	3	6%	9	19%	17	35%			1	2%	9	19%	9	19%
<b>200AQ</b>	2005/06	2	25%	2	25%	1	13%			1	13%			2	25%

Source: SMCCCD Data Warehouse

Retention Count: Number of students with A,B,C,D,F,CR,NC, I grades.

Retention Rate: The percentage of students who complete a course with a grade of A,B,C,D,F,CR,NC, I out of total enrollment.

Success Count: Number of students with A,B,C,CR grades.

Success Rate: The percentage of students who complete a course with a grade of A,B,C,CR out of total enrollments.

**Political Science**

		A		B		C		D		F		W	
<b>200AQ</b>	2005/06	6	15%	3	7%	14	34%	4	10%	4	10%	10	24%
	2006/07	8	23%	7	20%	4	11%	1	3%	1	3%	14	40%
	2007/08	5	22%	5	22%	3	13%	1	4%			9	39%
<b>210AQ</b>	2007/08	7	19%	6	17%	11	31%	1	3%	3	8%	8	22%

**Psychology**

		A		B		C		D		F		I		W	
<b>268AQ</b>	2004/05	2	8%	5	19%	2	8%	3	12%	9	35%			5	19%
	2005/06	3	9%	2	6%	3	9%	3	9%	12	36%			10	30%
	2006/07			4	10%	8	19%	2	5%	15	36%			13	31%
	2007/08			1	6%					6	33%	2	11%	9	50%

**Read**

		A		B		C		D		F		W	
<b>836AQ</b>	2003/04	4	13%	8	25%	3	9%	2	6%	5	16%	10	31%
	2004/05	2	7%	7	25%	7	25%	8	29%			4	14%

**Speech**

		A		B		C		D		F		W	
<b>150AQ</b>	2003/04	14	47%	6	20%	2	7%	2	7%	1	3%	5	17%
	2004/05	7	22%	8	25%	6	19%	1	3%	6	19%	4	13%
	2005/06	8	25%	10	31%	3	9%	2	6%	4	13%	5	16%
	2006/07	10	19%	11	21%	12	23%	4	8%	8	15%	8	15%
	2007/08	16	23%	19	27%	12	17%	3	4%	10	14%	11	15%

Source: SMCCCD Data Warehouse

Retention Count: Number of students with A,B,C,D,F,CR,NC, I grades.

Retention Rate: The percentage of students who complete a course with a grade of A,B,C,D,F,CR,NC, I out of total enrollments.

Success Count: Number of students with A,B,C,CR grades.

Success Rate: The percentage of students who complete a course with a grade of A,B,C,CR out of total enrollments.