



2007




ASTEP

Learning Community Outcomes Report

Prepared by:

Office of Planning, Research & Institutional Effectiveness



Section Contents



Term Enrollment by Course

Term Enrollment by Demographic

Overall Success and Retention

Success and Retention by Subject

Grade Distribution by Subject



ASTEP Enrollment by Course: 2003/04 to 2006/07
Unduplicated Headcount

<u>Term Desc</u>	<u>Crn</u>	<u>Subject</u>	<u>Section</u>	<u>Course Title</u>	<u>Counts</u>
Fall 2003	80734	READ	836AQ	Academic Reading Strategies	33
	83165	CRER	650AQ	ASTEP Seminar	8
	83826	ENGL	836AQ	Writing Development	28
	89583	MATH	120AQ	Intermediate Algebra-ASTEP	49
	Total				118
Spring 2004	30230	CRER	650AQ	ASTEP Seminar	6
	30534	MATH	110AQ	Elementary Algebra - ASTEP	31
	33325	ENGL	100AQ	Composition	22
	34142	SPCH	150AQ	Communicating Across Cultures	31
	37643	HIST	244AQ	African American History	46
Total				136	
Fall 2004	80734	READ	836AQ	Academic Reading Strategies	31
	83165	CRER	650AQ	ASTEP Seminar	9
	83826	ENGL	836AQ	Intro to College Composition	36
	84371	PSYC	268AQ	Black Psychology	28
	89188	SPCH	150AQ	Comm. Across Cultures	32
	89873	MATH	110AQ	Elementary Algebra-ASTEP	47
Total				183	
Spring 2005	30230	CRER	650AQ	ASTEP Seminar	11
	33325	ENGL	100AQ	Composition	25
	37643	HIST	244AQ	African American History	40
	39581	MATH	120AQ	Intermediate Algebra	44
Total				120	
Fall 2005	83165	CRER	650AQ	ASTEP Seminar	19
	84371	PSYC	268AQ	Black Psychology	23
	84378	MATH	200AQ	Probability & Statistics:ASTEP	8
	88372	PLSC	200AQ	National, State & Local Govt	47
	89188	SPCH	150AQ	Intercultural Communication	34
	90073	ENGL	846AQ	Read & Write Conn. ASTEP	28
Total				159	
Spring 2006	30230	CRER	650AQ	ASTEP Seminar	12
	33325	ENGL	100AQ	Composition	26
	37643	HIST	244AQ	African American History	34
	40231	MATH	110AQ	Elementary Algebra - ASTEP	12
	40300	PSYC	268AQ	Black Psychology	17
Total				101	
Fall 2006	83165	CRER	650AQ	ASTEP Seminar	23
	84371	PSYC	268AQ	Black Psychology	28
	88372	PLSC	200AQ	National, State & Local Govt	36
	89188	SPCH	150AQ	Intercultural Communication	30
	90073	ENGL	846AQ	Read & Write Conn. ASTEP	27

**ASTEP Enrollment by Course: 2003/04 to 2006/07
Unduplicated Headcount**

<u>Term Desc</u>	<u>Crn</u>	<u>Subject</u>	<u>Section</u>	<u>Course Title</u>	<u>Counts</u>
	90615	MATH	110AQ	Elementary Algebra - ASTEP	12
	Total				156
Spring 2007	30230	CRER	650AQ	ASTEP Seminar	23
	33325	ENGL	100AQ	Composition	20
	37643	HIST	244AQ	African American History	21
	40300	PSYC	268AQ	Black Psychology	17
	40613	SPCH	150AQ	Intercultural Communication	24
	40670	MATH	120AQ	Intermediate Algebra-ASTEP	16
	Total				121
Fall 2007	84371	PSYC	268AQ	Black Psychology	8
	88372	PLSC	200AQ	National, State & Local Govt	25
	89188	SPCH	150AQ	Intercultural Communication	41
	90073	ENGL	846AQ	Read & Write Conn. ASTEP	32
	90615	MATH	110AQ	Elementary Algebra - ASTEP	37
	91259	MUS.	665SJQX	Jazz Band: Sammy Nestico	8
	91386	COUN	100AQ	College Success - ASTEP	43
	Total				194

**ASTEP Demographics
Fall 2003 to Fall 2007**

Gender

	Under 18		Fall 2004		Fall 2005		Fall 2006		Fall 2007		Total FA03-FA07 and % Change FA06-FA07	
	Count	%	Count	%	Count	%	Count	%	Count	%	Count	%
Female	52	47%	69	45%	61	45%	65	48%	73	48%	320	12%
Male	59	53%	86	55%	74	54%	69	51%	75	50%	363	9%
Unreported					1	1%	2	1%	3	2%	6	50%
Total	111	100%	155	100%	136	100%	136	100%	151	100%	689	11%

Age

	Fall 2003		Fall 2004		Fall 2005		Fall 2006		Fall 2007		Total FA03-FA07 and % Change FA06-FA07	
	Count	%	Count	%	Count	%	Count	%	Count	%	Count	%
Under 18	1	1%			3	2%	2	1%	1	1%	7	-50%
Age 18-22	93	84%	121	78%	105	77%	117	86%	111	74%	547	-5%
Age 23-28	10	9%	21	14%	19	14%	12	9%	23	15%	85	92%
Age 29-39	5	5%	9	6%	6	4%	4	3%	7	5%	31	75%
Age 40-49	2	2%	3	2%	3	2%			2	1%	10	
Age 50-59			1	1%			1	1%	3	2%	5	200%
Age 60+									4	3%	4	
Total	111	100%	155	100%	136	100%	136	100%	151	100%	689	11%

Ethnicity

	Fall 2003		Fall 2004		Fall 2005		Fall 2006		Fall 2007		Total FA03-FA07 and % Change FA06-FA07	
	Count	%	Count	%	Count	%	Count	%	Count	%	Count	%
African American	15	14%	41	26%	31	23%	45	33%	44	29%	176	-2%
Asian	31	28%	31	20%	37	27%	21	15%	29	19%	149	38%
Filipino	17	15%	29	19%	19	14%	12	9%	17	11%	94	42%
Hispanic	24	22%	34	22%	28	21%	28	21%	26	17%	140	-7%
Native American							1	1%	3	2%	4	200%
White	20	18%	13	8%	15	11%	15	11%	16	11%	79	7%
Other	3	3%	5	3%	1	1%	5	4%	4	3%	18	-20%
Unreported	1	1%	2	1%	5	4%	9	7%	12	8%	29	33%
Total	111	100%	155	100%	136	100%	136	100%	151	100%	689	11%

Enrollment Status

	Fall 2003		Fall 2004		Fall 2005		Fall 2006		Fall 2007		Total FA03-FA07 and % Change FA06-FA07	
	Count	%	Count	%	Count	%	Count	%	Count	%	Count	%
Continuing	67	60%	65	42%	72	53%	65	48%	96	64%	365	48%
Current K-12					1	1%			1	1%	2	
First-Time	28	25%	54	35%	32	24%	47	35%	31	21%	192	-34%
First-Time Transfer	7	6%	14	9%	11	8%	9	7%	11	7%	52	22%
Returning	8	7%	20	13%	11	8%	10	7%	7	5%	56	-30%
Returning Transfer	1	1%	2	1%	9	7%	5	4%	5	3%	22	0%
Total	111	100%	155	100%	136	100%	136	100%	151	100%	689	11%

Educational Goal

	Fall 2003		Fall 2004		Fall 2005		Fall 2006		Fall 2007		Total FA03-FA07 and % Change FA06-FA07	
	Count	%	Count	%	Count	%	Count	%	Count	%	Count	%
AA/AS & Transfer	65	59%	89	57%	83	61%	86	63%	84	64%	407	-2%
AA/AS w/o Transfer	9	8%	9	6%	11	8%	4	3%	3	2%	36	-25%
Certificate w/o Transfer	3	3%	4	3%	2	1%	1	1%	1	1%	11	0%
Transfer w/o AA/AS	14	13%	17	11%	15	11%	28	21%	17	13%	91	-39%
Acquire Job Skills			2	1%					1	1%	3	
Complete HS Credits	1	1%	1	1%			1	1%	1	1%	4	0%
Educational Development	1	1%	2	1%	3	2%	4	3%	8	6%	18	100%
Undecided	18	16%	30	19%	21	15%	12	9%	15	11%	96	25%
Update Job Skills			1	1%	1	1%			1	1%	3	
Total	111	100%	155	100%	136	100%	136	100%	131	100%	669	-4%

**ASTEP Demographics
Spring 2004 to Spring 2007**

Gender

	Spring 2004		Spring 2005		Spring 2006		Spring 2007		Total SP04-SP07 and % Change SP06-SP07	
Female	61	48%	55	47%	43	50%	44	45%	203	2%
Male	66	52%	60	52%	43	50%	53	54%	222	23%
Unreported			1	1%			1	1%	2	
Total	127	100%	116	100%	86	100%	98	100%	427	14%

Age

	Spring 2004		Spring 2005		Spring 2006		Spring 2007		Total SP04-SP07 and % Change SP06-SP07	
Under 18	2	2%	1	1%			3	3%	6	
Age 18-22	91	72%	78	67%	64	74%	77	79%	310	20%
Age 23-28	26	20%	22	19%	12	14%	13	13%	73	8%
Age 29-39	8	6%	12	10%	6	7%	3	3%	29	-50%
Age 40-49					3	3%	1	1%	4	-67%
Age 50-59			3	3%	1	1%	1	1%	5	0%
Total	127	100%	116	100%	86	100%	98	100%	427	14%

Ethnicity

	Spring 2004		Spring 2005		Spring 2006		Spring 2007		Total SP04-SP07 and % Change SP06-SP07	
African American	33	26%	34	29%	28	33%	39	40%	134	39%
Asian	20	16%	26	22%	16	19%	6	6%	68	-63%
Filipino	11	9%	14	12%	13	15%	12	12%	50	-8%
Hispanic	29	23%	18	16%	14	16%	13	13%	74	-7%
Native American	1	1%					1	1%	2	
White	17	13%	10	9%	9	10%	14	14%	50	56%
Other	9	7%	7	6%			1	1%	17	
Unreported	7	6%	7	6%	6	7%	12	12%	32	100%
Total	127	100%	116	100%	86	100%	98	100%	427	14%

Enrollment Status

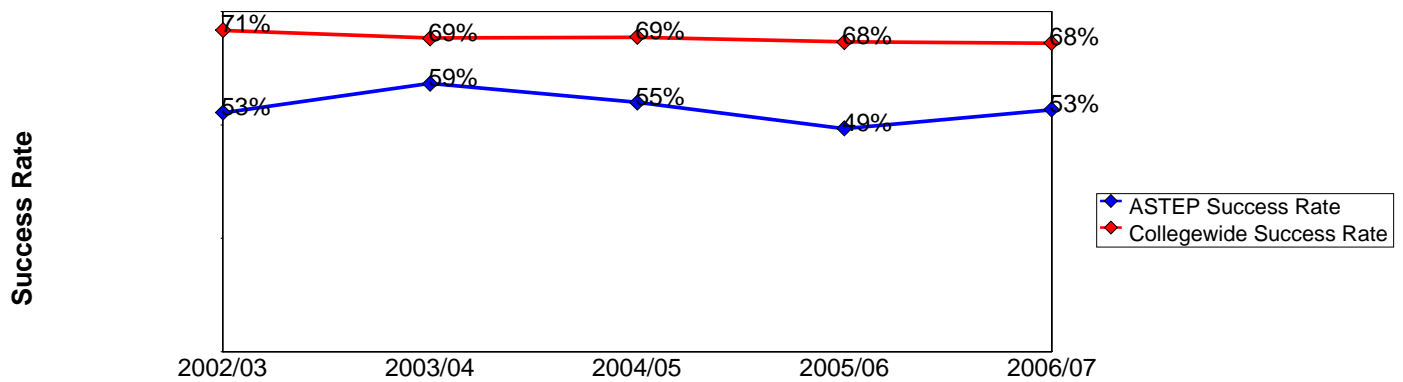
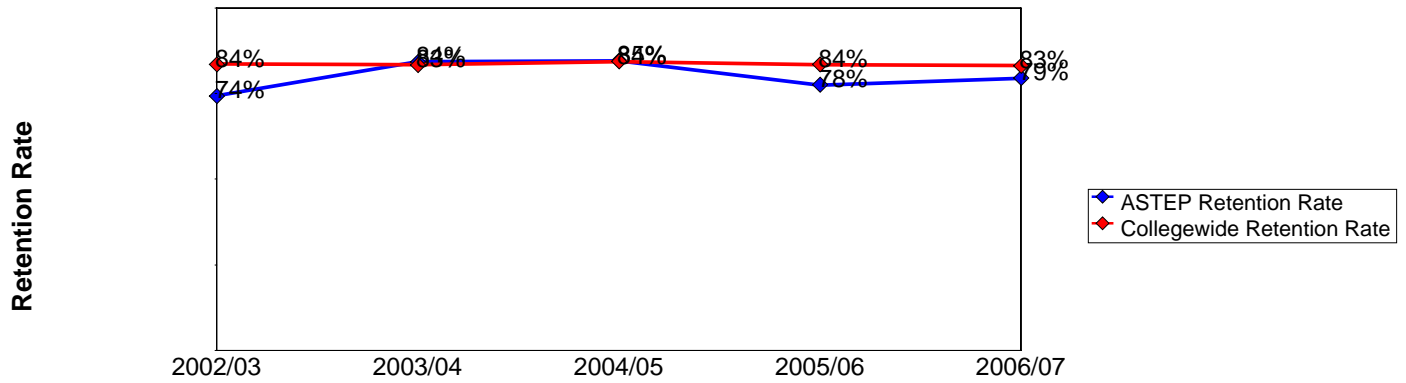
	Spring 2004		Spring 2005		Spring 2006		Spring 2007		Total SP04-SP07 and % Change SP06-SP07	
Continuing	108	85%	96	83%	68	79%	75	77%	347	10%
First-Time	10	8%	7	6%	8	9%	8	8%	33	0%
First-Time Transfer	2	2%	6	5%	4	5%	8	8%	20	100%
Returning	7	6%	5	4%	4	5%	4	4%	20	0%
Returning Transfer			2	2%	2	2%	3	3%	7	50%
Total	127	100%	116	100%	86	100%	98	100%	427	14%

Educational Goal

	Spring 2004		Spring 2005		Spring 2006		Spring 2007		Total SP04-SP07 and % Change SP06-SP07	
AA/AS & Transfer	81	64%	71	61%	51	59%	61	62%	264	20%
AA/AS w/o Transfer	13	10%	10	9%	9	10%	6	6%	38	-33%
Certificate w/o Transfer	5	4%	1	1%	1	1%	2	2%	9	100%
Transfer w/o AA/AS	13	10%	12	10%	14	16%	12	12%	51	-14%
Acquire Job Skills	1	1%	2	2%	1	1%	2	2%	6	100%
Educational Development	1	1%	1	1%	1	1%	5	5%	8	400%
Undecided	13	10%	19	16%	9	10%	9	9%	50	0%
Update Job Skills							1	1%	1	
Total	127	100%	116	100%	86	100%	98	100%	427	14%

ASTEP Overall Success and Retention 2002/03 to 2006/07

	Head Count	Retention Count	Retention Rate	Success Count	Success Rate
2002/03	203	151	74%	107	53%
2003/04	242	204	84%	143	59%
2004/05	293	248	85%	161	55%
2005/06	236	183	78%	116	49%
2006/07	268	213	79%	143	53%



Source: SMCCD Data Warehouse

Retention Count: Number of students with A,B,C,D,F,CR,NC, I grades.

Retention Rate: The percentage of students who complete a course with a grade of A,B,C,D,F,CR,NC, I out of total enrollments.

Success Count: Number of students with A,B,C,CR grades.

Success Rate: The percentage of students who complete a course with a grade of A,B,C,CR out of total enrollments.

**ASTEP Success and Retention by Subject
2002/03 to 2006/07**

Career and Personal Development

	Head Count	Retention Count	Retention Rate	Success Count	Success Rate
2002/03	16	13	81%	9	56%
2003/04	14	13	93%	6	43%
2004/05	20	16	80%	6	30%
2005/06	30	26	87%	12	40%
2006/07	46	41	89%	24	52%

English

	Head Count	Retention Count	Retention Rate	Success Count	Success Rate
2002/03	56	54	96%	35	63%
2003/04	46	40	87%	31	67%
2004/05	59	47	80%	40	68%
2005/06	50	37	74%	24	48%
2006/07	45	36	80%	25	56%

History

	Head Count	Retention Count	Retention Rate	Success Count	Success Rate
2003/04	43	38	88%	20	47%
2004/05	37	32	86%	11	30%
2005/06	30	24	80%	17	57%
2006/07	21	18	86%	12	57%

Math

	Head Count	Retention Count	Retention Rate	Success Count	Success Rate
2002/03	48	30	63%	30	63%
2003/04	77	66	86%	49	64%
2004/05	90	80	89%	58	64%
2005/06	20	15	75%	11	55%
2006/07	26	23	88%	18	69%

Political Science

	Head Count	Retention Count	Retention Rate	Success Count	Success Rate
2005/06	41	31	76%	23	56%
2006/07	35	21	60%	19	54%

Psychology

	Head Count	Retention Count	Retention Rate	Success Count	Success Rate
2002/03	42	25	60%	11	26%
2004/05	27	21	78%	9	33%
2005/06	33	23	70%	8	24%
2006/07	42	29	69%	12	29%

**ASTEP Success and Retention by Subject
2002/03 to 2006/07**

Reading

	Head Count	Retention Count	Retention Rate	Success Count	Success Rate
2002/03	26	19	73%	13	50%
2003/04	32	22	69%	15	47%
2004/05	28	24	86%	16	57%

Speech

	Head Count	Retention Count	Retention Rate	Success Count	Success Rate
2002/03	15	10	67%	9	60%
2003/04	30	25	83%	22	73%
2004/05	32	28	88%	21	66%
2005/06	32	27	84%	21	66%
2006/07	53	45	85%	33	62%

Source: SMCCD Data Warehouse

Retention Count: Number of students with A,B,C,D,F,CR,NC, I grades.

Retention Rate: The percentage of students who complete a course with a grade of A,B,C,D,F,CR,NC, I out of total enrollments.

Success Count: Number of students with A,B,C,CR grades.

Success Rate: The percentage of students who complete a course with a grade of A,B,C,CR out of total enrollments.

**ASTEP Grades by Subject
2002/03 to 2006/07**

Career and Personal Development

		A		B		C		CR		D		F		W	
650AQ	2002/03	2	13%	1	6%			6	38%	4	25%			3	19%
	2003/04	4	29%	1	7%	1	7%			6	43%	1	7%	1	7%
	2004/05	5	25%	1	5%					3	15%	7	35%	4	20%
	2005/06	6	20%	3	10%	3	10%			7	23%	7	23%	4	13%
	2006/07	3	7%	16	35%	5	11%			8	17%	9	20%	5	11%

English

		A		B		C		D		F		I		W	
100AQ	2002/03	6	21%	9	31%	3	10%	6	21%	4	14%			1	3%
	2003/04	2	11%	4	22%	6	33%	1	6%	2	11%			3	17%
	2004/05	1	4%	3	13%	9	38%	1	4%	3	13%			7	29%
	2005/06			4	17%	9	39%	3	13%	4	17%	1	4%	2	9%
	2006/07			4	21%	5	26%	4	21%	1	5%			5	26%
836AQ	2002/03	4	15%	8	30%	5	19%	1	4%	8	30%			1	4%
	2003/04	2	7%	10	36%	7	25%	1	4%	5	18%			3	11%
	2004/05	6	17%	7	20%	14	40%	2	6%	1	3%			5	14%
846AQ	2005/06			3	11%	8	30%	5	19%					11	41%
	2006/07	5	19%	5	19%	6	23%	2	8%	3	12%	1	4%	4	15%

History

		A		B		C		D		F		I		W	
244AQ	2003/04	2	5%	8	19%	10	23%	7	16%	11	26%			5	12%
	2004/05	1	3%	4	11%	6	16%	3	8%	18	49%			5	14%
	2005/06			5	17%	12	40%			6	20%	1	3%	6	20%
	2006/07	1	5%			11	52%	3	14%	3	14%			3	14%

Math

		A		B		C		D		F		W	
110AQ	2002/03	4	8%	11	23%	15	31%					18	38%
	2003/04	2	7%	5	17%	5	17%	3	10%	8	27%	7	23%
	2004/05	1	2%	12	26%	18	39%	3	7%	7	15%	5	11%
	2005/06	1	8%	3	25%	2	17%	2	17%	1	8%	3	25%
	2006/07			5	45%	3	27%			2	18%	1	9%
120AQ	2003/04	4	9%	13	28%	20	43%	6	13%			4	9%
	2004/05			8	18%	19	43%	9	20%	3	7%	5	11%
	2006/07			5	33%	5	33%	3	20%			2	13%
200AQ	2005/06	2	25%	2	25%	1	13%			1	13%	2	25%

Political Science

		A		B		C		D		F		W	
200AQ	2005/06	6	15%	3	7%	14	34%	4	10%	4	10%	10	24%
	2006/07	8	23%	7	20%	4	11%	1	3%	1	3%	14	40%

**ASTEP Grades by Subject
2002/03 to 2006/07**

Psychology

		A		B		C		D		F		I		W	
268AQ	2002/03	2	5%	7	17%	2	5%	4	10%	10	24%			17	40%
	2004/05	2	7%	5	19%	2	7%	3	11%	9	33%			6	22%
	2005/06	3	9%	2	6%	3	9%	2	6%	10	30%	3	9%	10	30%
	2006/07			4	10%	8	19%	2	5%	14	33%	1	2%	13	31%

Reading

		A		B		C		D		F		W	
836AQ	2002/03	3	12%	5	19%	5	19%	5	19%	1	4%	7	27%
	2003/04	4	13%	8	25%	3	9%	2	6%	5	16%	10	31%
	2004/05	2	7%	7	25%	7	25%	8	29%			4	14%

Speech

		A		B		C		D		F		W	
150AQ	2002/03	6	40%	2	13%	1	7%			1	7%	5	33%
	2003/04	14	47%	6	20%	2	7%	2	7%	1	3%	5	17%
	2004/05	7	22%	8	25%	6	19%	1	3%	6	19%	4	13%
	2005/06	8	25%	10	31%	3	9%	2	6%	4	13%	5	16%
	2006/07	10	19%	11	21%	12	23%	4	8%	8	15%	8	15%

Source: SMCCD Data Warehouse

Retention Count: Number of students with A,B,C,D,F,CR,NC, I grades.

Retention Rate: The percentage of students who complete a course with a grade of A,B,C,D,F,CR,NC, I out of total enrollments.

Success Count: Number of students with A,B,C,CR grades.

Success Rate: The percentage of students who complete a course with a grade of A,B,C,CR out of total enrollments.