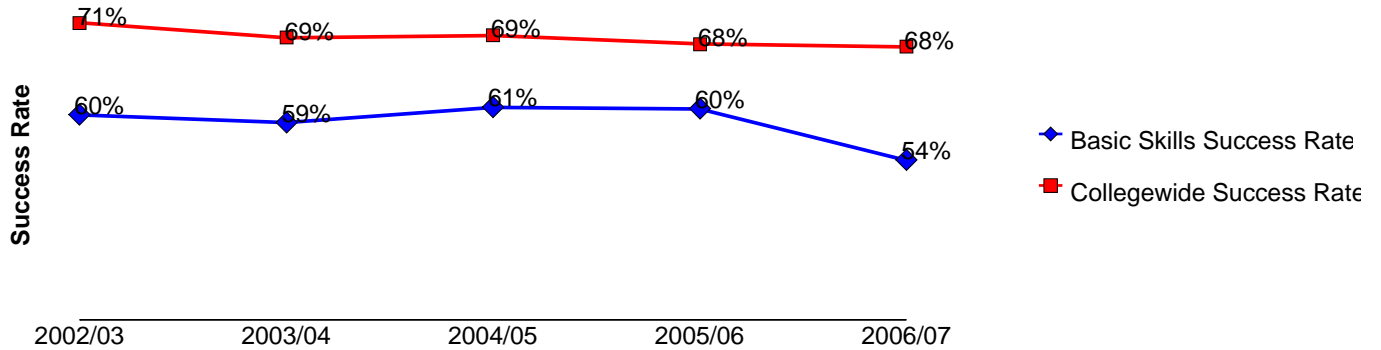
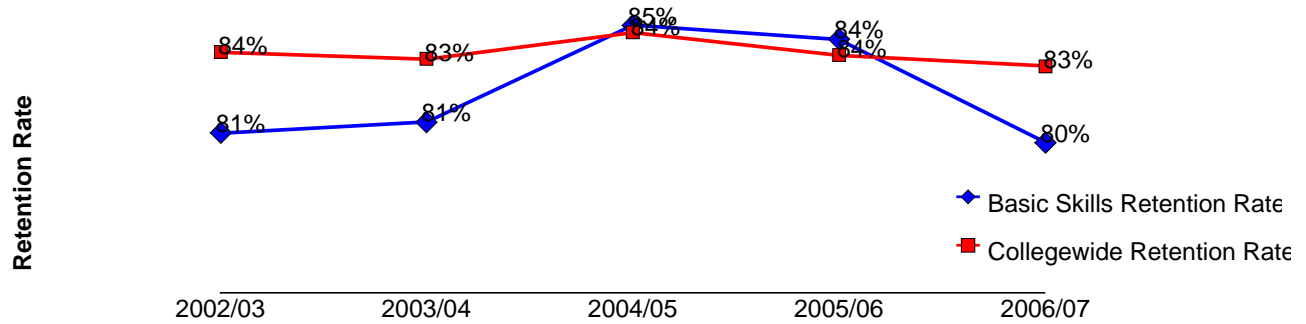


**Basic Skills Success and Retention
2002/03 to 2006/07**

	Head Count	Retention Count	Retention Rate	Success Count	Success Rate
2002/03	3,371	2,722	81%	2,015	60%
2003/04	2,916	2,366	81%	1,715	59%
2004/05	2,498	2,114	85%	1,515	61%
2005/06	2,525	2,124	84%	1,527	60%
2006/07	2,424	1,949	80%	1,316	54%
Totals & Averages	13,734	11,275	82%	8,088	59%



Source: SMCCD Data Warehouse

Retention Count: Number of students with A,B,C,D,F,CR,NC, I grades.

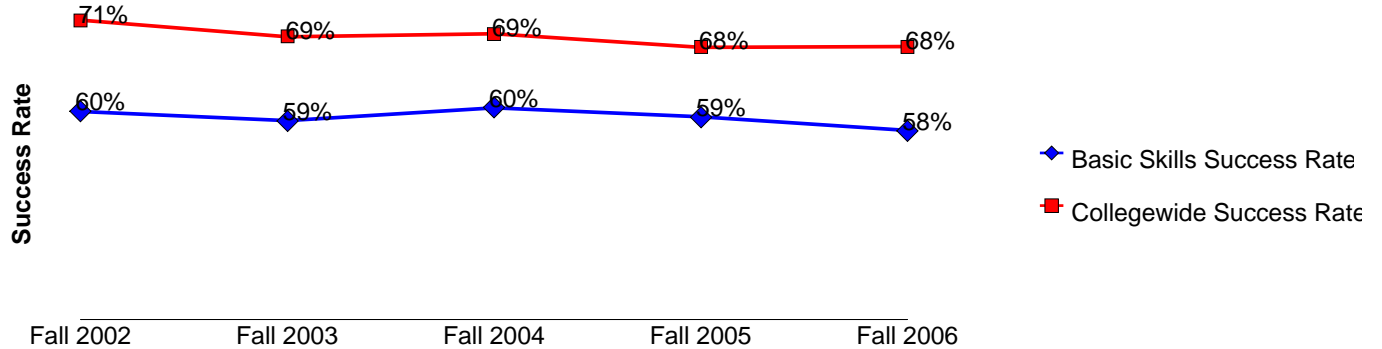
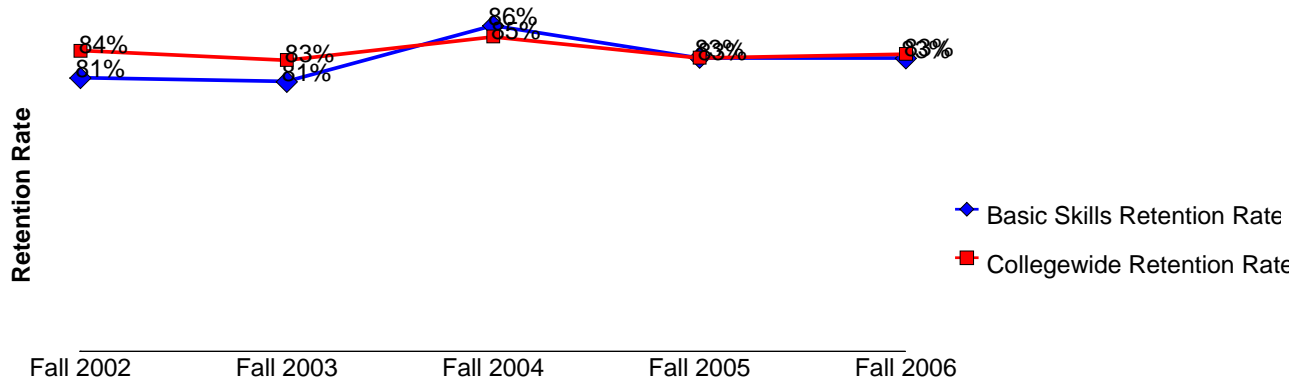
Retention Rate: The percentage of students who complete a course with a grade of A,B,C,D,F,CR,NC, I out of total enrollments.

Success Count: Number of students with A,B,C,CR grades.

Success Rate: The percentage of students who complete a course with a grade of A,B,C,CR out of total enrollments.

Basic Skills Success and Retention Fall 2002 to 2006

	Head Count	Retention Count	Retention Rate	Success Count	Success Rate
Fall 2002	1,897	1,540	81%	1,137	60%
Fall 2003	1,635	1,321	81%	962	59%
Fall 2004	1,366	1,177	86%	825	60%
Fall 2005	1,319	1,096	83%	782	59%
Fall 2006	1,475	1,225	83%	850	58%
Totals & Averages	7,692	6,359	83%	4,556	59%



Source: SMCCD Data Warehouse

Retention Count: Number of students with A,B,C,D,F,CR,NC, I grades.

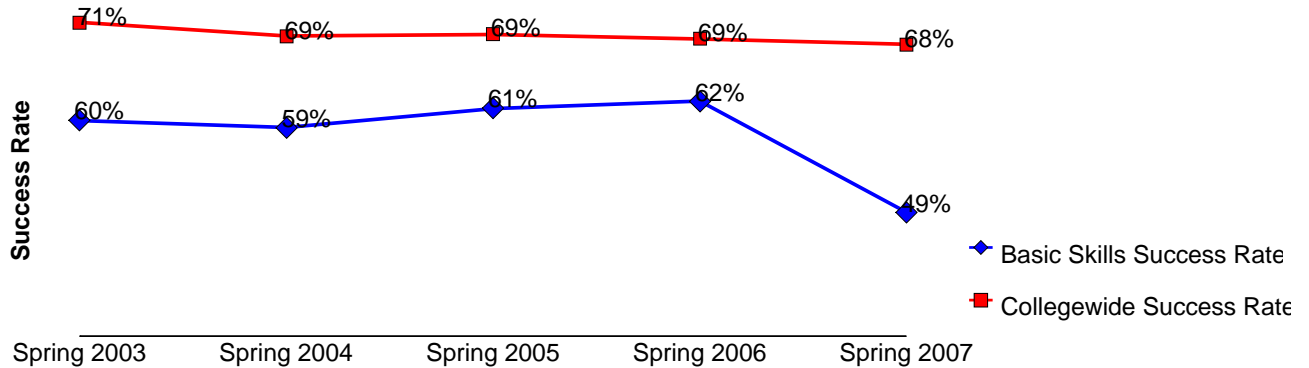
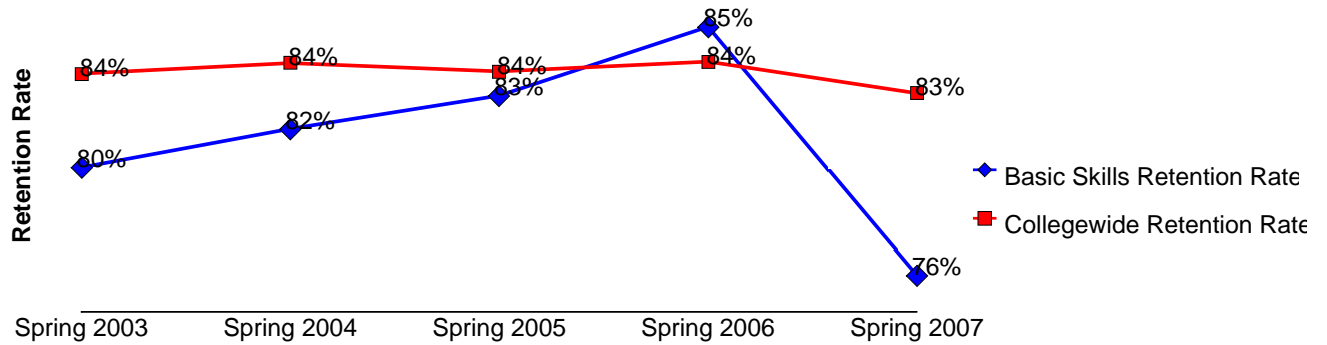
Retention Rate: The percentage of students who complete a course with a grade of A,B,C,D,F,CR,NC, I out of total enrollments.

Success Count: Number of students with A,B,C,CR grades.

Success Rate: The percentage of students who complete a course with a grade of A,B,C,CR out of total enrollments.

Basic Skills Success and Retention Spring 2003 to 2007

	Head Count	Retention Count	Retention Rate	Success Count	Success Rate
Spring 2003	1,474	1,182	80%	878	60%
Spring 2004	1,281	1,045	82%	753	59%
Spring 2005	1,132	937	83%	690	61%
Spring 2006	1,206	1,028	85%	745	62%
Spring 2007	949	724	76%	466	49%
Totals & Averages	6,042	4,916	81%	3,532	58%



Source: SMCCD Data Warehouse

Retention Count: Number of students with A,B,C,D,F,CR,NC, I grades.

Retention Rate: The percentage of students who complete a course with a grade of A,B,C,D,F,CR,NC, I out of total enrollments.

Success Count: Number of students with A,B,C,CR grades.

Success Rate: The percentage of students who complete a course with a grade of A,B,C,CR out of total enrollments.