

Department Productivity: By Year and By Term

	Census Headcount	End of Term Headcount	FTEF	FTES	WSCH	Load	Sections	Max Enroll
2003/04	107	74	0.47	5.14	154	330	7	206
2004/05	91	61	0.47	3.81	114	245	7	202
2005/06	71	54	0.60	3.60	108	180	8	242
2006/07	71	42	0.53	2.88	86	162	8	228
2007/08	117	65	0.47	2.80	84	178	7	202

	Census Headcount	End of Term Headcount	FTEF	FTES	WSCH	Load	Sections	Max Enroll
Fall 2003	51	31	0.20	2.51	75	377	3	86
Fall 2004	55	33	0.27	2.65	80	298	4	112
Fall 2005	48	38	0.27	2.86	86	322	4	112
Fall 2006	34	12	0.27	1.80	54	202	4	112
Fall 2007	49	20	0.20	1.53	46	225	3	86
Spring 2004	56	43	0.27	2.62	79	295	4	120
Spring 2005	36	28	0.20	1.16	35	173	3	90
Spring 2006	23	16	0.33	0.74	22	67	4	130
Spring 2007	37	30	0.27	1.09	33	122	4	116
Spring 2008	68	45	0.27	1.27	38	142	4	116

Source: SMCCCD Data Warehouse

Census Headcount: Number of duplicated headcount at final census.

End of Term Headcount: Number of duplicated headcount at the end of the term.

FTEF: Total number of full time equivalent faculty assigned.

FTES: Total number of full time equivalent students enrolled at first census.

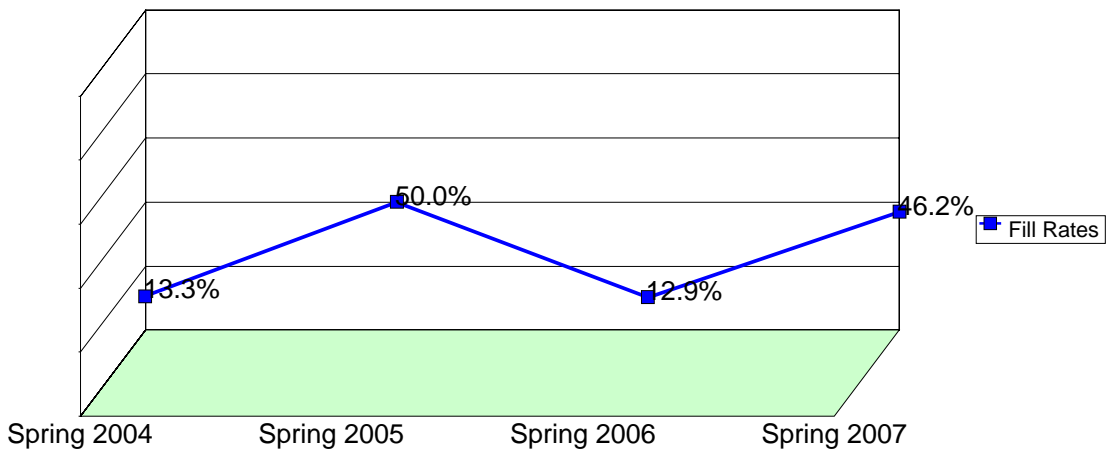
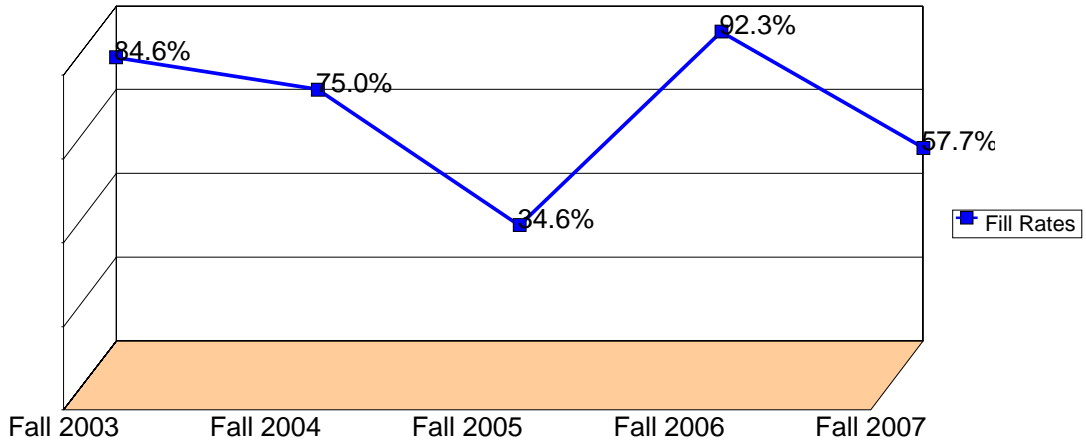
WSCH: Weekly student contact hours generated by census enrollments.

Load: The ratio of WSCH to FTEF, used to measure productivity.

Sections: Total number of sections offered per semester.

Max Enroll: The enrollment capacity or maximum enrollment as defined in curriculum.

Department Fill Rates by Term



Source: SMCCCD Data Warehouse

Fill Rates: The percent a class fills/enrolls based on capacity or enrollment maximum defined in the curriculum (does not include positive attendance, open entry/open exit or independent study classes).

Department Productivity: Term by Course

				Census Headcount	End of Term Headcount	FTEF	FTES	WSCH	Load	Sections	Max Enroll
Fall 2003	LSCI	100	Intro to Information Research	29	23	0.13	1.19	36	268	2	60
		106	Online Research I: Intro to On	22	8	0.07	1.32	40	594	1	26
Fall 2004	LSCI	100	Intro to Information Research	16	10	0.13	0.75	22	168	2	60
		106	Online Research I: Intro to On	22	6	0.07	1.32	40	594	1	26
		110	Digital Oral Research Project	17	17	0.07	0.58	17	262	1	26
Fall 2005	LSCI	100	Intro to Information Research	17	12	0.13	0.57	17	127	2	60
		106	Online Research I: Intro to On	9	4	0.07	0.48	14	216	1	26
		110	Digital Oral Research Project	22	22	0.07	1.82	54	816	1	26
Fall 2006	LSCI	100	Intro to Information Research	34	12	0.20	1.80	54	269	3	86
		110	Digital Oral Research Project	0	0	0.07	0.00	0	0	1	26
Fall 2007	LSCI	100	Intro to Information Research	49	20	0.20	1.53	46	225	3	86
Spring 2004	LSCI	100	Intro to Information Research	28	18	0.13	1.70	51	382	2	60
		106	Online Research I: Intro to On	24	21	0.07	0.80	24	360	1	30
		110	Digital Oral Research Project	4	4	0.07	0.12	4	55	1	30
Spring 2005	LSCI	100	Intro to Information Research	21	18	0.13	0.70	21	157	2	60
		110	Digital Oral Research Project	15	10	0.07	0.46	14	206	1	30
Spring 2006	LSCI	100	Intro to Information Research	23	16	0.20	0.74	22	111	3	100
		110	Digital Oral Research Project	0	0	0.13	0.00	0	0	1	30
Spring 2007	LSCI	100	Intro to Information Research	20	16	0.20	0.63	19	95	3	86
		110	Digital Oral Research Project	17	14	0.07	0.45	14	204	1	30
Spring 2008	LSCI	100	Intro to Information Research	38	18	0.20	1.27	38	190	3	86
		110	Digital Oral Research Project	30	27	0.07	0.00	0	0	1	30

Source: SMCCD Data Warehouse

Census Headcount: Number of duplicated headcount at final census.
 End of Term Headcount: Number of duplicated headcount at the end of the term.
 FTEF: Total number of full time equivalent faculty assigned.
 FTES: Total number of full time equivalent students enrolled at first census.
 WSCH: Weekly student contact hours generated by census enrollments.
 Load: The ratio of WSCH to FTEF, used to measure productivity.
 Sections: Total number of sections offered per semester.
 Max Enroll: The enrollment capacity or maximum enrollment as defined in curriculum.