

## Department Enrollment

### Enrollment by Term

FA03	FA04	FA05	FA06	FA07	SP04	SP05	SP06	SP07	SP08
49	52	48	34	45	55	35	23	43	66

### Enrollment by Gender

	2003/04		2004/05		2005/06		2006/07		2007/08		Change 06/07-07/08	5 Year Row Total & Average	
Female	58	54%	58	64%	47	65%	36	43%	61	55%	69%	260	56%
Male	43	45%	29	36%	23	35%	36	54%	44	43%	22%	175	43%
Unreported	1	1%					2	3%	2	2%	0%	5	1%
<b>Column Total</b>	<b>102</b>	<b>100%</b>	<b>87</b>	<b>100%</b>	<b>70</b>	<b>100%</b>	<b>74</b>	<b>100%</b>	<b>107</b>	<b>100%</b>	<b>45%</b>	<b>440</b>	<b>100%</b>

### Enrollment by Ethnicity

	2007/08		2004/05		2005/06		2006/07		2007/08		Change 06/07-07/08	5 Year Row Total & Average	
African American	6	7%	3	3%	5	8%	3	3%	5	7%	67%	22	6%
Asian	24	23%	15	20%	15	23%	14	19%	21	18%	50%	89	20%
Filipino	9	11%	25	28%	19	27%	24	35%	33	30%	38%	110	26%
Hispanic	24	21%	23	26%	10	12%	17	20%	17	17%	0%	91	19%
Native American	1	1%			1	0%	1	0%			-100%	3	0%
Other	2	1%	1	0%	2	3%			4	5%		9	2%
White	32	28%	16	17%	18	25%	10	10%	21	13%	110%	97	18%
Unreported	6	6%	4	6%	1	2%	8	13%	10	11%	25%	29	8%
<b>Column Total</b>	<b>104</b>	<b>100%</b>	<b>87</b>	<b>100%</b>	<b>71</b>	<b>100%</b>	<b>77</b>	<b>100%</b>	<b>111</b>	<b>100%</b>	<b>44%</b>	<b>450</b>	<b>100%</b>

### Enrollment by Age

	2003/04		2004/05		2005/06		2006/07		2007/08		Change 06/07-07/08	5 Year Row Total & Average	
Under 18	2	3%	1	1%					3	5%		6	2%
Age 18-22	39	45%	48	58%	35	52%	38	58%	57	61%	50%	217	55%
Age 23-28	19	22%	13	16%	15	24%	21	32%	25	27%	19%	93	25%
Age 29-39	20	14%	14	17%	8	13%	9	7%	8	5%	-11%	59	10%
Age 40-49	10	6%	6	3%	6	5%	1	0%	6	1%	500%	29	3%
Age 50-59	10	9%	5	4%	3	3%	4	2%	4	1%	0%	26	4%
Age 60+	2	1%			3	2%	1	2%	4	0%	300%	10	1%
<b>Column Total</b>	<b>102</b>	<b>100%</b>	<b>87</b>	<b>100%</b>	<b>70</b>	<b>100%</b>	<b>74</b>	<b>100%</b>	<b>107</b>	<b>100%</b>	<b>45%</b>	<b>440</b>	<b>100%</b>

Source: SMCCCD Data Warehouse

\*Note: Counts and percents are based on census figures for summer, fall and spring except where noted.

\*\*Note: The variations in total numbers each year within the demographic segments are due to changes students make from term to term in reporting their demographic status.

**Enrollment by Status**

	2003/04		2004/05		2005/06		2006/07		2007/08		Change 06/07-07/08	5 Year Row Total & Averag	
Continuing	70	69%	65	69%	59	85%	62	84%	69	62%	11%	325	72%
Currently K-12									2	3%		2	1%
First-Time	9	11%	5	7%	1	2%	1	2%	12	18%	1,100%	28	10%
First-Time Transfer	8	10%	6	8%	2	3%	5	8%	5	7%	0%	26	7%
Returning	9	7%	5	7%	4	5%	6	5%	9	4%	50%	33	5%
Returning Transfer	6	3%	6	8%	4	5%	1	2%	11	6%	1,000%	28	5%
<b>Column Total</b>	<b>102</b>	<b>100%</b>	<b>87</b>	<b>100%</b>	<b>70</b>	<b>100%</b>	<b>75</b>	<b>100%</b>	<b>108</b>	<b>100%</b>	<b>44%</b>	<b>442</b>	<b>100%</b>

**Enrollment by Course-Taking Pattern (Fall and Spring only)**

	2003/04		2004/05		2005/06		2006/07		2007/08		Change 06/07-07/08	5 Year Row Total & Average	
Day	57	60%	67	73%	52	75%	33	46%	81	76%	145%	290	68%
Evening	43	37%	19	25%	18	25%	41	54%	26	21%	-37%	147	31%
Day and Evening	3	3%	1	1%					2	2%		6	2%
<b>Column Total</b>	<b>103</b>	<b>100%</b>	<b>87</b>	<b>100%</b>	<b>70</b>	<b>100%</b>	<b>74</b>	<b>100%</b>	<b>109</b>	<b>100%</b>	<b>47%</b>	<b>443</b>	<b>100%</b>

**Enrollment by Educational Goal**

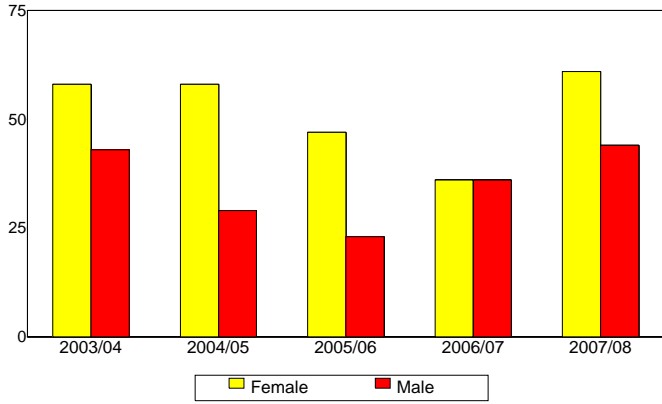
	2003/04		2004/05		2005/06		2006/07		2007/08		Change 06/07-07/08	5 Year Row Total & Average	
Transfer	66	67%	59	62%	54	79%	61	83%	57	50%	-7%	297	65%
AA/AS w/o Transfer	8	9%	5	7%	3	3%	2	3%	8	7%	300%	26	6%
Certificate w/o Transfer	5	5%	3	4%	3	5%	1	0%			-100%	12	2%
Acquire/Update Job Skills	5	3%	4	6%	4	7%	5	8%	4	6%	-20%	22	6%
Educational Development	10	9%	5	6%	2	2%	1	0%	7	4%	600%	25	4%
Improve Basic Skills									3	4%		3	1%
Undecided	8	8%	11	15%	4	5%	4	6%	10	11%	150%	37	9%
Unreported									19	18%		19	6%
<b>Column Total</b>	<b>102</b>	<b>100%</b>	<b>87</b>	<b>100%</b>	<b>70</b>	<b>100%</b>	<b>74</b>	<b>100%</b>	<b>108</b>	<b>100%</b>	<b>46%</b>	<b>441</b>	<b>100%</b>

Source: SMCCCD Data Warehouse

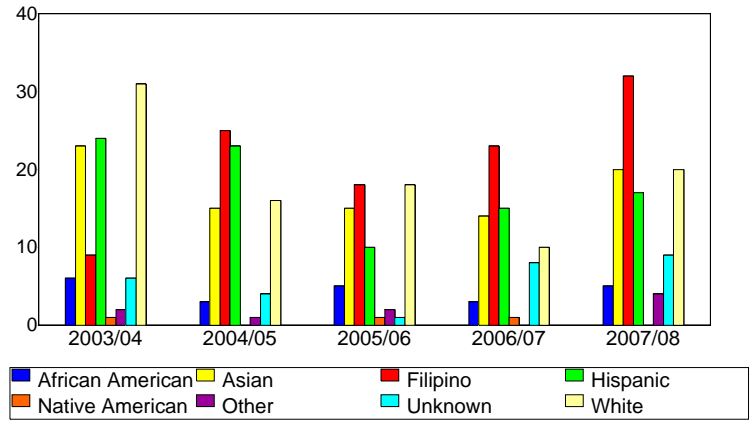
\*Note: Counts and percents are based on census figures for summer, fall and spring except where noted.

\*\*Note: The variations in total numbers each year within the demographic segments are due to changes students make from term to term in reporting their demographic status.

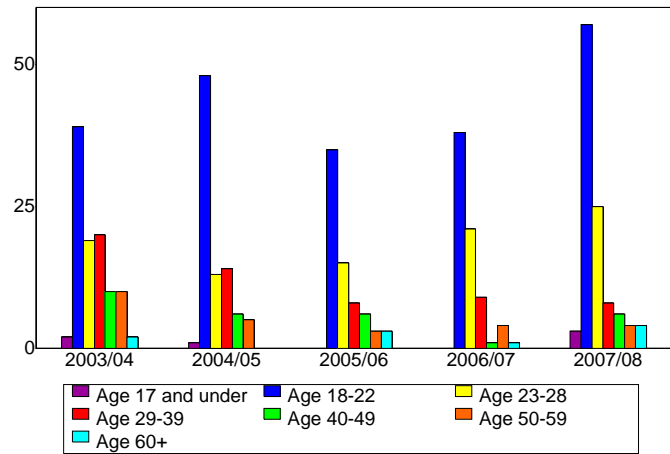
**Enrollment by Gender**



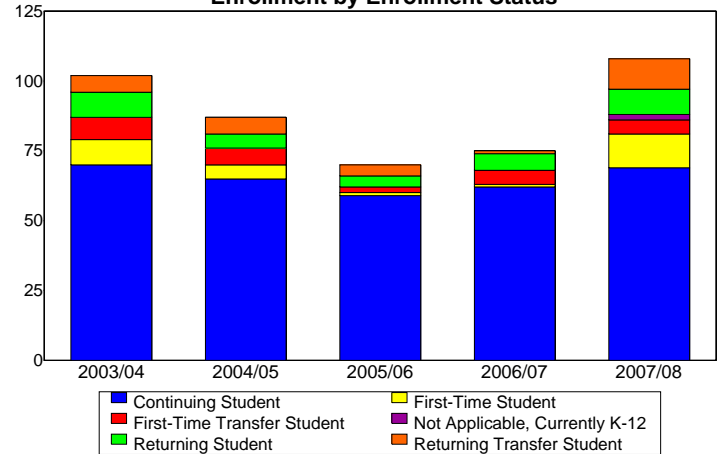
**Enrollment by Ethnicity**



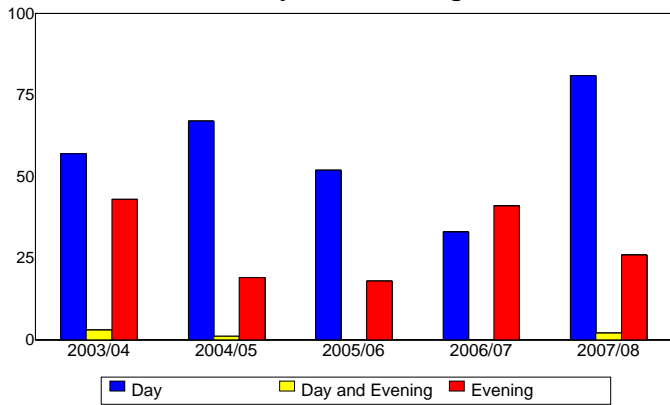
**Enrollment by Student Age**



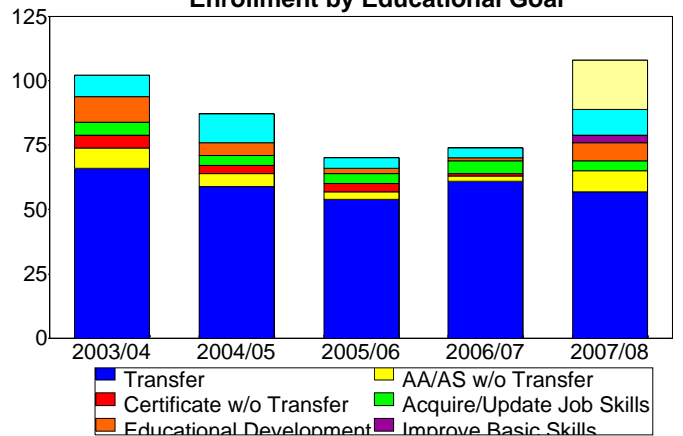
**Enrollment by Enrollment Status**



**Enrollment by Course-Taking Pattern**



**Enrollment by Educational Goal**



Source: SMCCCD Data Warehouse