

## Department Productivity: By Year and By Term

	<b>Census Headcount</b>	<b>End of Term Headcount</b>	<b>FTEF</b>	<b>FTES</b>	<b>WSCH</b>	<b>Load</b>	<b>Sections</b>	<b>Max Enroll</b>
2003/04	134	116	1.20	14.41	432	360	12	310
2004/05	177	149	1.20	19.23	577	481	12	305
2005/06	201	175	2.00	21.94	658	329	16	1,414
2006/07	135	96	1.20	15.11	453	378	10	1,194
2007/08	134	104	1.20	15.99	480	400	10	181

	<b>Census Headcount</b>	<b>End of Term Headcount</b>	<b>FTEF</b>	<b>FTES</b>	<b>WSCH</b>	<b>Load</b>	<b>Sections</b>	<b>Max Enroll</b>
Fall 2003	83	73	0.60	9.15	274	457	6	125
Fall 2004	94	83	0.60	9.90	297	495	6	125
Fall 2005	101	87	0.90	11.37	341	379	7	165
Fall 2006	65	51	0.60	7.87	236	394	5	95
Fall 2007	71	52	0.60	8.55	257	428	5	95
Spring 2004	51	43	0.60	5.27	158	263	6	185
Spring 2005	83	66	0.60	9.33	280	467	6	180
Spring 2006	75	64	0.80	8.07	242	303	7	215
Spring 2007	70	45	0.60	7.23	217	362	4	100
Spring 2008	63	52	0.60	7.43	223	372	5	86

Source: SMCCCD Data Warehouse

\*Note: Crosslisted courses have been combined to calculate a single fill rate.

Census Headcount: Number of duplicated headcount at final census.

End of Term Headcount: Number of duplicated headcount at the end of the term.

FTEF: Total number of full time equivalent faculty assigned.

FTES: Total number of full time equivalent students enrolled at first census.

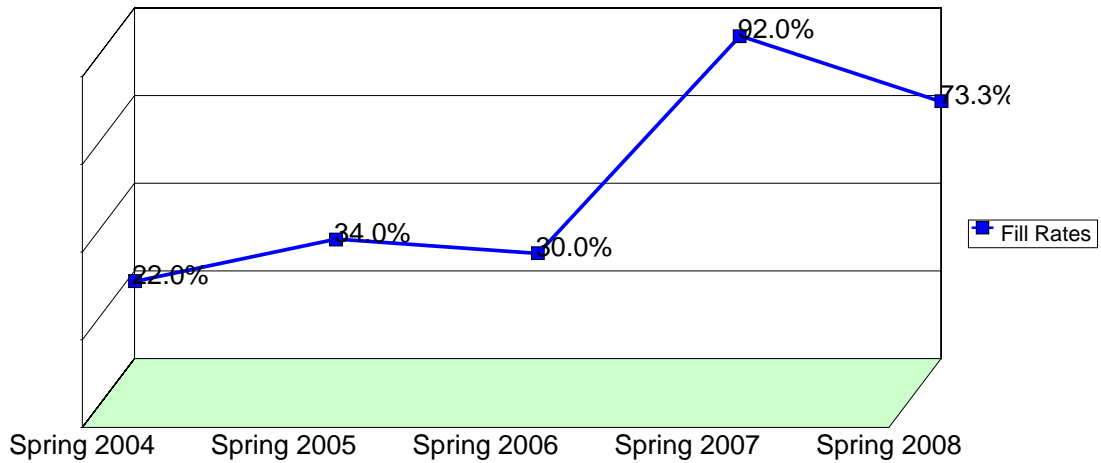
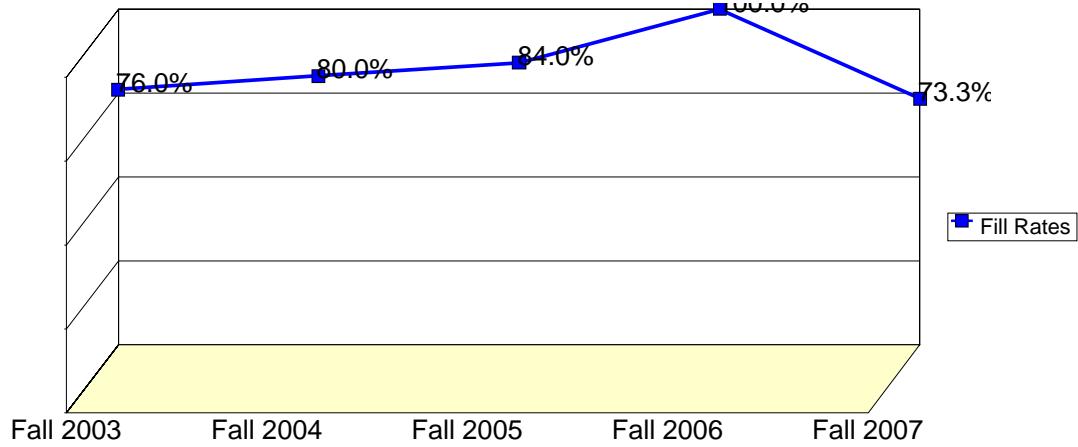
WSCH: Weekly student contact hours generated by census enrollments.

Load: The ratio of WSCH to FTEF, used to measure productivity.

Sections: Total number of sections offered per semester.

Max Enroll: The enrollment capacity or maximum enrollment as defined in curriculum.

## Department Fill Rates by Term



Source: SMCCCD Data Warehouse

\*Note: Crosslisted courses have been combined to calculate a single fill rate.

Fill Rates: The percent a class fills/enrolls based on capacity or enrollment maximum defined in the curriculum (does not include positive attendance, open entry/open exit or independent study classes).

## Department Productivity: Term by Course

				Census Headcount	End of Term Headcount	FTEF	FTES	WSCH	Load	Sections	Max Enroll
<b>Fall 2003</b>	JOUR	110	Mass Media & Society	35	31	0.20	3.50	105	525	1	40
		120	Newswriting	20	15	0.20	2.67	80	400	1	30
		300	Newspaper Production	9	9	0.20	1.76	53	265	2	60
		670	Journalism Work Experience	1	1		0.13	4		1	10
		690	Special Projects	18	17	0.00	1.08	33	#INF	1	15
<b>Fall 2004</b>	JOUR	110	Mass Media & Society	46	40	0.20	4.60	138	690	1	40
		120	Newswriting	19	16	0.20	2.53	76	380	1	30
		300	Newspaper Production	9	8	0.10	1.80	54	540	2	60
		670	Journalism Work Experience	0	0	0.10				1	10
		690	Special Projects	20	19	0.00	0.97	29	#INF	1	15
<b>Fall 2005</b>	JOUR	110	Mass Media & Society	43	36	0.40	4.40	132	330	2	80
		120	Newswriting	19	17	0.20	2.53	76	380	1	30
		300	Newspaper Production	18	15	0.20	3.60	108	540	2	60
		670	Journalism Work Experience	0	0	0.10				1	10
		690	Special Projects	21	19	0.00	0.83	25	#INF	1	15
<b>Fall 2006</b>	JOUR	110	Mass Media & Society	20	16	0.20	2.00	60	300	1	30
		120	Newswriting	16	13	0.20	2.24	67	336	1	30
		300	Newspaper Production	11	9	0.10	2.20	66	660	1	30
		301	Online Newspaper Staff	3	3	0.10	0.60	18	180	1	30
		690	Special Projects	15	10	0.00	0.83	25	#INF	1	15
<b>Fall 2007</b>	JOUR	110	Mass Media & Society	26	21	0.20	2.60	78	390	1	30
		120	Newswriting	23	15	0.20	3.22	97	483	1	30
		300	Newspaper Production	8	8	0.10	1.60	48	480	1	30
		301	Online Newspaper Staff	3	3	0.10	0.60	18	180	1	30
		690	Special Projects	11	5	0.00	0.53	16	#INF	1	15
<b>Spring 2004</b>	JOUR	110	Mass Media & Society	27	24	0.20	2.70	81	405	1	40
		120	Newswriting	10	7	0.20	1.33	40	200	1	35
		300	Newspaper Production	3	3	0.20	0.60	18	90	2	60
		670	Journalism Work Experience	0	0					1	30
		690	Special Projects	11	9	0.00	0.63	19	#INF	1	20
<b>Spring 2005</b>	JOUR	110	Mass Media & Society	34	26	0.20	3.40	102	510	1	35
		120	Newswriting	20	12	0.20	2.67	80	400	1	35
		300	Newspaper Production	12	12	0.20	2.40	72	360	2	60
		670	Journalism Work Experience	0	0	0.00				1	30
		690	Special Projects	17	16	0.00	0.87	26	#INF	1	20
<b>Spring 2006</b>	JOUR	110	Mass Media & Society	39	27	0.40	3.90	117	293	2	70
		120	Newswriting	9	7	0.20	1.20	36	180	1	35
		300	Newspaper Production	12	15	0.20	2.40	72	360	2	60
		670	Journalism Work Experience	0	0	0.00				1	30
		690	Special Projects	15	15	0.00	0.57	17	#INF	1	20
<b>Spring 2007</b>	JOUR	110	Mass Media & Society	20	14	0.20	2.00	60	300	1	30
		120	Newswriting	17	11	0.20	2.27	68	340	1	30
		300	Newspaper Production	10	9	0.20	2.00	60	300	1	15
		690	Special Projects	23	11	0.00	0.97	29	#INF	1	25
<b>Spring 2008</b>	JOUR	110	Mass Media & Society	26	21	0.20	2.60	78	390	1	30

			<b>Census Headcount</b>	<b>End of Term Headcount</b>	<b>FTEF</b>	<b>FTES</b>	<b>WSCH</b>	<b>Load</b>	<b>Sections</b>	<b>Max Enroll</b>
	120	Writing & Reporting for Media	14	9	0.10	1.96	59	588	1	26
	121	AdvWriting&Reporting for Media	4	4	0.10	0.56	17	168	1	26
	300	Newspaper Production	8	7	0.20	1.81	54	272	1	15
	302	Newspaper Workshop	11	11	0.00	0.50	15	#INF	1	15
<b>Summer 2005</b>	JOUR 120	Newsriting	18	18	0.30	2.30	69	230	1	35
	690	Special Projects	7	6	0.00	0.20	6	#INF	1	999
<b>Summer 2006</b>	JOUR 690	Special Projects	0	0	0.00				1	999

Source: SMCCCD Data Warehouse

- Census Headcount: Number of duplicated headcount at final census.
- End of Term Headcount: Number of duplicated headcount at the end of the term.
- FTEF: Total number of full time equivalent faculty assigned.
- FTES: Total number of full time equivalent students enrolled at first census.
- WSCH: Weekly student contact hours generated by census enrollments.
- Load: The ratio of WSCH to FTEF, used to measure productivity.
- Sections: Total number of sections offered per semester.
- Max Enroll: The enrollment capacity or maximum enrollment as defined in curriculum.