

Department Success and Retention

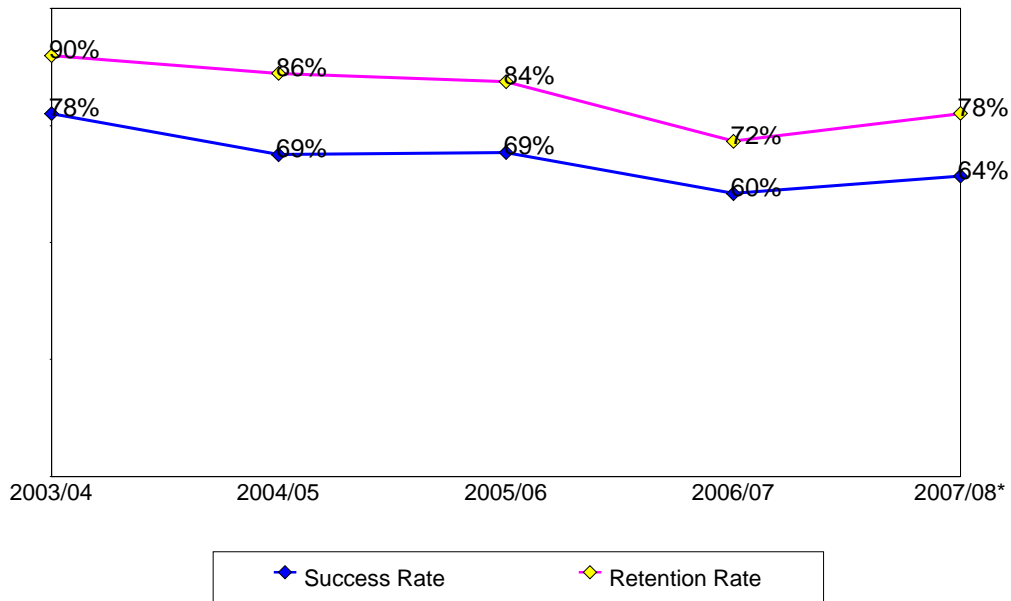
This report contains success and retention rates by various demographic segments and by course. Annual data are an aggregate of the fall and spring semesters. The following parameters have been applied:

- Success Counts: Number of students with A,B,C,CR grades.
- Success Rate: The percentage of students who complete a course with a grade of A,B,C,CR out of total enrollments.
- Retention Counts: Number of students with A,B,C,D,F,CR,NC, I grades.
- Retention Rate: The percentage of students who complete a course with a grade of A,B,C,D,F,CR,NC, I out of total headcount.

Annual Success and Retention

	Headcount	Success Count	Success Rate	Retention Count	Retention Rate
2003/04	129	100	78%	116	90%
2004/05	173	119	69%	149	86%
2005/06	179	124	69%	151	84%
2006/07	134	81	60%	96	72%
2007/08*	67	43	64%	52	78%
Change from 2006/07 to 2007/08*	-67	-38	4%	-44	6%
Totals & Averages	682	467	68%	564	83%

Annual (Fall/Spring) Success and Retention Rates



* 2007/08 does not include Spring 2008.

Source: SMCCCD Data Warehouse

Success and Retention By Term

	Headcount	Success Count	Success Rate	Retention Count	Retention Rate
Fall 2003	80	60	75%	73	91%
Fall 2004	91	62	68%	83	91%
Fall 2005	101	70	69%	87	86%
Fall 2006	65	40	62%	51	78%
Fall 2007	67	43	64%	52	78%
Totals & Averages	404	275	68%	346	86%
Spring 2003	66	51	77%	59	89%
Spring 2004	49	40	82%	43	88%
Spring 2005	82	57	70%	66	80%
Spring 2006	78	54	69%	64	82%
Spring 2007	69	41	59%	45	65%
Totals & Averages	344	243	71%	277	81%

Grade Distribution

	A		B		C		D		F		CR		NC		W	
Fall 2003	13	21%	21	28%	10	13%	6	5%	2	3%	13	15%	4	7%	6	10%
Fall 2004	17	21%	17	20%	11	12%	6	6%	9	11%	14	15%	5	6%	6	8%
Fall 2005	19	16%	19	20%	13	15%	7	8%	6	7%	17	16%	2	2%	14	16%
Fall 2006	11	17%	10	16%	11	20%			4	11%	6	9%	4	5%	13	21%
Fall 2007	9	16%	17	26%	7	12%	4	8%	4	10%	5	5%			14	23%
Spring 2003	9	15%	9	15%	16	23%	2	3%	4	7%	16	25%	2	3%	7	10%
Spring 2004	24	51%	8	16%			1	2%	1	2%	8	18%	1	0%	5	10%
Spring 2005	22	27%	8	14%	8	10%	3	3%	4	6%	15	17%	1	1%	12	21%
Spring 2006	17	24%	9	14%	14	20%	4	6%	2	3%	11	13%	4	4%	14	16%
Spring 2007	6	8%	10	15%	11	21%	4	6%			11	15%			20	37%

Source: SMCCCD Data Warehouse

Success and Retention by Ethnicity		Headcount	Success Count	Success Rate	Retention Count	Retention Rate
2003/04	African American	9	5	56%	9	100%
	Asian	20	18	90%	20	100%
	Filipino	20	15	75%	18	90%
	Hispanic	17	15	88%	16	94%
	Other	3	1	33%	2	67%
	White	57	43	75%	48	84%
	Unreported	3	3	100%	3	100%
	Totals & Averages	129	100	78%	116	90%
2004/05	African American	18	6	33%	13	72%
	Asian	26	20	77%	25	96%
	Filipino	34	24	71%	26	76%
	Hispanic	27	13	48%	22	81%
	Native American	3	3	100%	3	100%
	Other	1	1	100%	1	100%
	White	50	41	82%	48	96%
	Unreported	14	11	79%	11	79%
Totals & Averages	173	119	69%	149	86%	
2005/06	African American	15	11	73%	12	80%
	Asian	21	18	86%	20	95%
	Filipino	34	22	65%	28	82%
	Hispanic	23	11	48%	13	57%
	Native American	4	4	100%	4	100%
	Other	6	4	67%	5	83%
	White	59	41	69%	52	88%
	Unreported	17	13	76%	17	100%
Totals & Averages	179	124	69%	151	84%	
2006/07	African American	8	4	50%	4	50%
	Asian	22	11	50%	13	59%
	Filipino	28	21	75%	21	75%
	Hispanic	12	6	50%	8	67%
	Native American	1			1	100%
	Other	5	4	80%	4	80%
	White	40	20	50%	28	70%
	Unreported	18	15	83%	17	94%
Totals & Averages	134	81	60%	96	72%	
2007/08*	African American	6	3	50%	6	100%
	Asian	8	6	75%	7	88%
	Filipino	6	4	67%	4	67%
	Hispanic	19	11	58%	12	63%
	Other	1	1	100%	1	100%
	White	21	15	71%	19	90%
	Unreported	6	3	50%	3	50%
	Totals & Averages	67	43	64%	52	78%

* 2007/08 does not include Spring 2008.

Source: SMCCCD Data Warehouse

Success and Retention by Gender

		Headcount	Success Count	Success Rate	Retention Count	Retention Rate
2003/04	Female	65	50	77%	61	94%
	Male	64	50	78%	55	86%
	Totals & Averages	129	100	78%	116	90%
2004/05	Female	90	62	69%	78	87%
	Male	78	53	68%	67	86%
	Totals & Averages	168	115	68%	145	86%
2005/06	Female	75	54	72%	62	83%
	Male	94	62	66%	79	84%
	Unreported	6	5	83%	6	100%
	Totals & Averages	175	121	69%	147	84%
2006/07	Female	75	44	59%	50	67%
	Male	57	35	61%	44	77%
	Totals & Averages	132	79	60%	94	71%
2007/08*	Female	31	20	65%	26	84%
	Male	35	23	66%	26	74%
	Unreported	1				
	Totals & Averages	67	43	64%	52	78%

* 2007/08 does not include Spring 2008.

Success and Retention by Day/Evening Status

		Headcount	Success Count	Success Rate	Retention Count	Retention Rate
2003/04	Day	129	100	78%	116	90%
2004/05	Day	173	119	69%	149	86%
2005/06	Day	161	114	71%	138	86%
	Evening	18	10	56%	13	72%
2006/07	Day	134	81	60%	96	72%
2007/08*	Day	67	43	64%	52	78%

* 2007/08 does not include Spring 2008.

Source: SMCCCD Data Warehouse

Success and Retention by Age

		Headcount	Success Count	Success Rate	Retention Count	Retention Rate
2003/04	Under 18	1				
	Age 18-22	105	82	78%	96	91%
	Age 23-28	14	10	71%	11	79%
	Age 29-39	4	3	75%	4	100%
	Age 40-49	2	2	100%	2	100%
	Age 50-59	3	3	100%	3	100%
	Totals & Averages	129	100	78%	116	90%
2004/05	Under 18	7	5	71%	5	71%
	Age 18-22	138	95	69%	123	89%
	Age 23-28	18	10	56%	11	61%
	Age 29-39	7	6	86%	7	100%
	Age 40-49	2	2	100%	2	100%
	Age 50-59	1	1	100%	1	100%
	Totals & Averages	173	119	69%	149	86%
2005/06	Under 18	4	3	75%	4	100%
	Age 18-22	151	104	69%	129	85%
	Age 23-28	18	13	72%	14	78%
	Age 29-39	3	2	67%	2	67%
	Age 40-49	1				
	Age 50-59	2	2	100%	2	100%
	Totals & Averages	179	124	69%	151	84%
2006/07	Under 18	3	3	100%	3	100%
	Age 18-22	100	61	61%	74	74%
	Age 23-28	20	11	55%	11	55%
	Age 29-39	2	1	50%	1	50%
	Age 40-49	4	2	50%	2	50%
	Age 50-59	1	1	100%	1	100%
	Age 60+	4	2	50%	4	100%
	Totals & Averages	134	81	60%	96	72%
2007/08*	Age 18-22	48	29	60%	37	77%
	Age 23-28	17	12	71%	13	76%
	Age 40-49	2	2	100%	2	100%
	Totals & Averages	67	43	64%	52	78%

* 2007/08 does not include Spring 2008.

Success and Retention by Enrollment Status

		Headcount	Success Count	Success Rate	Retention Count	Retention Rate
2003/04	Continuing Student	88	74	84%	81	92%
	Currently K-12	1				
	First-Time Student	16	11	69%	15	94%
	First-Time Transfer Student	12	9	75%	12	100%
	Returning Student	12	6	50%	8	67%
2004/05	Continuing Student	134	98	73%	119	89%
	Currently K-12	1	1	100%	1	100%
	First-Time Student	13	6	46%	12	92%
	First-Time Transfer Student	8	4	50%	5	63%
	Returning Student	11	6	55%	8	73%
	Returning Transfer Student	6	4	67%	4	67%
2005/06	Continuing Student	137	100	73%	115	84%
	Currently K-12	2	1	50%	2	100%
	First-Time Student	19	10	53%	17	89%
	First-Time Transfer Student	8	4	50%	5	63%
	Returning Student	9	7	78%	8	89%
	Returning Transfer Student	4	2	50%	4	100%
2006/07	Continuing Student	110	67	61%	76	69%
	First-Time Student	8	3	38%	7	88%
	First-Time Transfer Student	9	5	56%	7	78%
	Returning Student	4	4	100%	4	100%
	Returning Transfer Student	3	2	67%	2	67%
2007/08*	Continuing Student	45	34	76%	38	84%
	First-Time Student	10	2	20%	6	60%
	First-Time Transfer Student	7	3	43%	4	57%
	Returning Student	3	2	67%	2	67%
	Returning Transfer Student	2	2	100%	2	100%

*2007/08 does not include Spring 2008.

Department Awards Conferred

Awards by Type

	2004/05	2006/07	2007/08*	Total
Associate Degree	1	2	2	5
Certificate - 30 to less than 60 units	1			1
Total	2	2	2	6

Awards by Gender

	2004/05	2006/07	2007/08*	Total
Female	1	1	2	4
Male	1	1		2

Awards by Ethnicity

	2004/05	2006/07	2007/08*	Total
Hispanic		1		1
Native American			1	1
Unreported			1	1
White	2	1		3

Awards by Age

	2004/05	2006/07	2007/08*	Total
18-22	1	2	1	4
23-28	1		1	2

* 2007/08 does not include Spring 2008.

Source: SMCCCD Data Warehouse