

Department Productivity: By Year and By Term

	Census Headcount	End of Term Headcount	FTEF	FTES	WSCH	Load	Sections	Max Enroll
2003/04	233	194	1.00	23.79	714	714	5	225
2004/05	250	204	1.20	25.45	764	636	6	270
2005/06	272	229	1.40	27.63	829	592	7	315
2006/07	259	219	1.40	26.43	793	566	7	315
2007/08	233	180	1.40	23.94	718	513	7	315

	Census Headcount	End of Term Headcount	FTEF	FTES	WSCH	Load	Sections	Max Enroll
Summer 2005	34	32	0.20	3.42	103	513	1	45
Summer 2006	34	34	0.20	3.21	96	481	1	45
Fall 2003	103	85	0.40	10.79	324	809	2	90
Fall 2004	129	104	0.60	13.35	401	667	3	135
Fall 2005	127	109	0.60	13.11	393	655	3	135
Fall 2006	103	88	0.60	10.66	320	533	3	135
Fall 2007	108	91	0.60	11.18	335	559	3	135
Spring 2004	130	109	0.60	13.00	390	650	3	135
Spring 2005	121	100	0.60	12.10	363	605	3	135
Spring 2006	111	88	0.60	11.10	333	555	3	135
Spring 2007	122	97	0.60	12.56	377	628	3	135
Spring 2008	125	89	0.80	12.76	383	479	4	180

Source: SMCCCD Data Warehouse

Census Headcount: Number of duplicated headcount at final census.

End of Term Headcount: Number of duplicated headcount at the end of the term.

FTEF: Total number of full time equivalent faculty assigned.

FTES: Total number of full time equivalent students enrolled at first census.

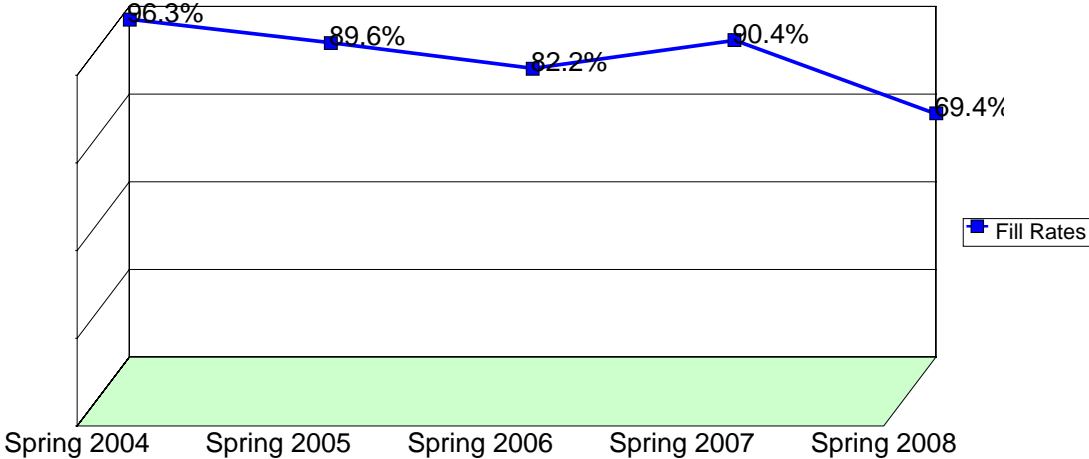
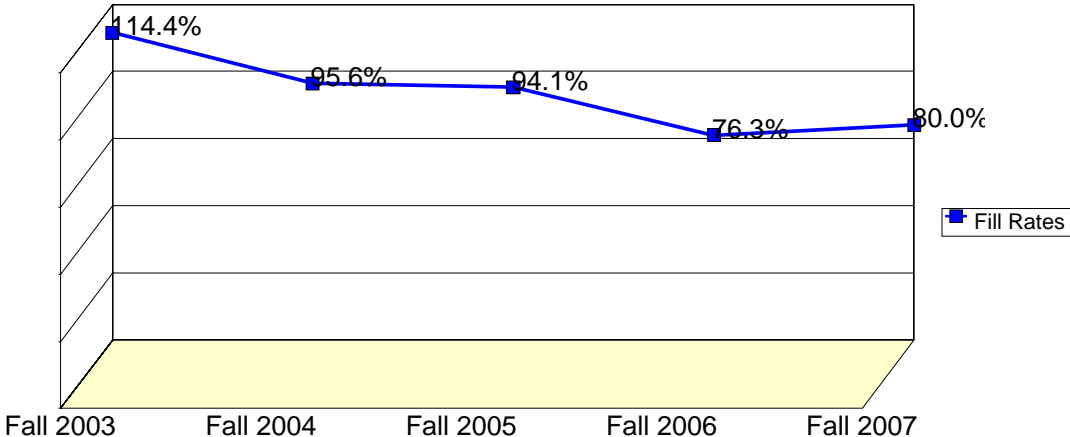
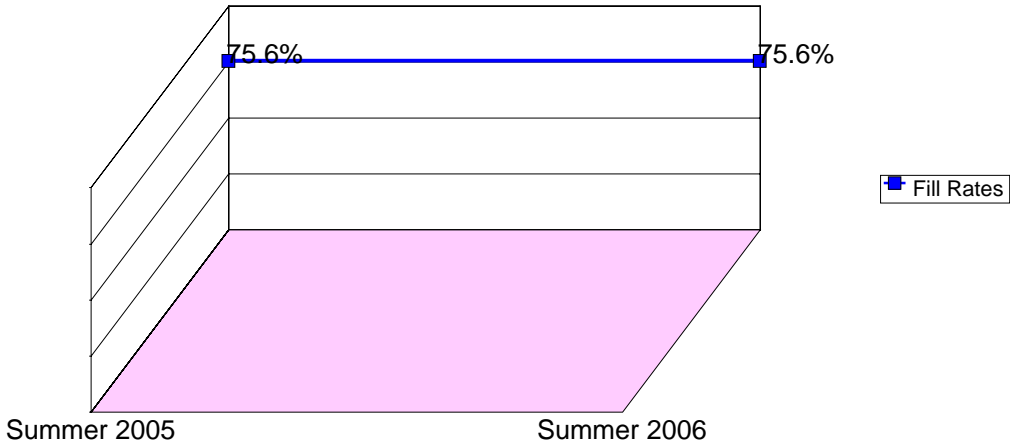
WSCH: Weekly student contact hours generated by census enrollments.

Load: The ratio of WSCH to FTEF, used to measure productivity.

Sections: Total number of sections offered per semester.

Max Enroll: The enrollment capacity or maximum enrollment as defined in curriculum.

Department Fill Rates by Term



Source: SMCCCD Data Warehouse

Fill Rates: The percent a class fills/enrolls based on capacity or enrollment maximum defined in the curriculum (does not include positive attendance or open entry/open exit classes).

Department Productivity: Term by Course

				Census Headcount	End of Term Headcount	FTEF	FTES	WSCH	Load	Sections	Max Enroll
Fall 2003	HUM.	106	Awakening of Individuality	49	43	0.20	5.39	162	809	1	45
		117	Arts, Senses and Imagination	54	42	0.20	5.40	162	810	1	45
Fall 2004	HUM.	106	Awakening of Individuality	92	74	0.40	9.65	290	724	2	90
		117	Arts, Senses and Imagination	37	30	0.20	3.70	111	555	1	45
Fall 2005	HUM.	106	Awakening of Individuality	89	76	0.40	9.31	279	698	2	90
		117	Arts, Senses and Imagination	38	33	0.20	3.80	114	570	1	45
Fall 2006	HUM.	106	Awakening of Individuality	80	70	0.40	8.36	251	627	2	90
		117	Arts, Senses and Imagination	23	18	0.20	2.30	69	345	1	45
Fall 2007	HUM.	106	Awakening of Individuality	78	66	0.40	8.18	245	614	2	90
		117	Arts, Senses and Imagination	30	25	0.20	3.00	90	450	1	45
Spring 2004	HUM.	106	Awakening of Individuality	97	82	0.40	9.70	291	728	2	90
		117	Arts, Senses and Imagination	33	27	0.20	3.30	99	495	1	45
Spring 2005	HUM.	106	Awakening of Individuality	79	64	0.40	7.90	237	593	2	90
		117	Arts, Senses and Imagination	42	36	0.20	4.20	126	630	1	45
Spring 2006	HUM.	106	Awakening of Individuality	71	59	0.40	7.10	213	533	2	90
		117	Arts, Senses and Imagination	40	29	0.20	4.00	120	600	1	45
Spring 2007	HUM.	106	Awakening of Individuality	77	66	0.40	8.06	242	605	2	90
		117	Arts, Senses and Imagination	45	31	0.20	4.50	135	675	1	45
Spring 2008	HUM.	106	Awakening of Individuality	67	54	0.40	6.96	209	522	2	90
		117	Arts, Senses and Imagination	58	35	0.40	5.80	174	435	2	90
Summer 2005	HUM.	106	Awakening of Individuality	34	32	0.20	3.42	103	513	1	45
Summer 2006	HUM.	106	Awakening of Individuality	34	34	0.20	3.21	96	481	1	45

Source: SMCCCD Data Warehouse

Census Headcount: Number of duplicated headcount at final census.
 End of Term Headcount: Number of duplicated headcount at the end of the term.
 FTEF: Total number of full time equivalent faculty assigned.
 FTES: Total number of full time equivalent students enrolled at first census.
 WSCH: Weekly student contact hours generated by census enrollments.
 Load: The ratio of WSCH to FTEF, used to measure productivity.
 Sections: Total number of sections offered per semester.
 Max Enroll: The enrollment capacity or maximum enrollment as defined in curriculum.