

Department Success and Retention

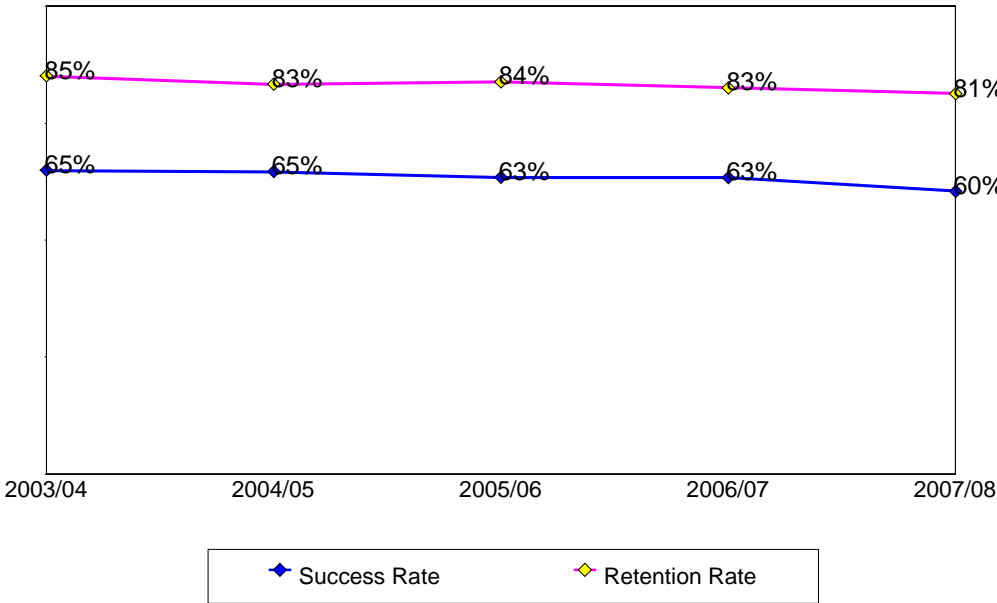
This report contains success and retention rates by various demographic segments and by course. Annual data are an aggregate of the fall and spring semesters. The following parameters have been applied:

- Success Counts: Number of students with A,B,C,CR grades.
- Success Rate: The percentage of students who complete a course with a grade of A,B,C,CR out of total enrollments.
- Retention Counts: Number of students with A,B,C,D,F,CR,NC, I grades.
- Retention Rate: The percentage of students who complete a course with a grade of A,B,C,D,F,CR,NC, I out of total headcount.

Annual Success and Retention

	Headcount	Success Count	Success Rate	Retention Count	Retention Rate
2003/04	228	148	65%	194	85%
2004/05	246	159	65%	205	83%
2005/06	235	149	63%	197	84%
2006/07	224	142	63%	185	83%
2007/08	225	136	60%	183	81%
Change from 2006/07 to 2007/08	1	-6	-3%	-2	-1%
Totals & Averages	1,158	734	63%	964	83%

Annual (Fall/Spring) Success and Retention Rates



Source: SMCCCD Data Warehouse

Success and Retention By Term

	Headcount	Success Count	Success Rate	Retention Count	Retention Rate
Fall 2003	102	58	57%	85	83%
Fall 2004	127	75	59%	104	82%
Fall 2005	127	83	65%	109	86%
Fall 2006	102	72	71%	88	86%
Fall 2007	104	64	62%	91	88%
Spring 2004	126	90	71%	109	87%
Spring 2005	119	84	71%	101	85%
Spring 2006	108	66	61%	88	81%
Spring 2007	122	70	57%	97	80%
Spring 2008	121	72	60%	92	76%
Totals & Averages	1,158	734	63%	964	83%

Grade Distribution

	A		B		C		D		F		CR	NC		W	
Fall 2003	20	18%	27	27%	9	9%	4	5%	23	23%				17	17%
Fall 2004	25	18%	31	23%	18	14%	7	6%	20	16%		2	2%	23	20%
Fall 2005	23	18%	36	28%	22	18%	12	11%	12	12%				18	13%
Fall 2006	47	44%	18	19%	7	7%	1	0%	15	15%				14	14%
Fall 2007	38	33%	13	13%	13	13%	5	5%	21	24%				12	13%
Spring 2004	48	35%	24	21%	18	15%	6	4%	13	10%				17	15%
Spring 2005	37	29%	30	25%	16	14%	4	4%	13	12%				18	16%
Spring 2006	18	17%	25	21%	23	22%	1	0%	20	20%		1	1%	20	18%
Spring 2007	35	30%	22	18%	11	10%	5	5%	21	19%				25	18%
Spring 2008	24	19%	30	25%	17	16%	6	5%	13	9%	1	1%		29	25%

Source: SMCCCD Data Warehouse

Success and Retention by Ethnicity

		Headcount	Success Count	Success Rate	Retention Count	Retention Rate
2003/04	African American	19	8	42%	17	89%
	Asian	46	36	78%	39	85%
	Filipino	66	42	64%	53	80%
	Hispanic	36	20	56%	32	89%
	Native American	1	1	100%	1	100%
	Other	6	3	50%	5	83%
	White	44	32	73%	40	91%
	Unreported	10	6	60%	7	70%
	Totals & Averages	228	148	65%	194	85%
2004/05	African American	10	7	70%	8	80%
	Asian	56	39	70%	46	82%
	Filipino	78	50	64%	67	86%
	Hispanic	37	22	59%	32	86%
	Other	6	3	50%	5	83%
	White	46	33	72%	37	80%
	Unreported	13	5	38%	10	77%
		Totals & Averages	246	159	65%	205
2005/06	African American	6	3	50%	3	50%
	Asian	61	35	57%	52	85%
	Filipino	60	41	68%	49	82%
	Hispanic	39	28	72%	36	92%
	Native American	1	1	100%	1	100%
	Other	7	4	57%	5	71%
	White	53	32	60%	44	83%
	Unreported	8	5	63%	7	88%
	Totals & Averages	235	149	63%	197	84%
2006/07	African American	9	6	67%	9	100%
	Asian	48	28	58%	37	77%
	Filipino	48	28	58%	35	73%
	Hispanic	43	24	56%	36	84%
	Native American	2	1	50%	2	100%
	Other	4	3	75%	3	75%
	White	55	43	78%	52	95%
	Unreported	15	9	60%	11	73%
	Totals & Averages	224	142	63%	185	83%
2007/08	African American	9	5	56%	6	67%
	Asian	47	31	66%	39	83%
	Filipino	47	25	53%	38	81%
	Hispanic	46	28	61%	39	85%
	Native American	3	1	33%	2	67%
	Other	5	3	60%	3	60%
	White	52	36	69%	44	85%
	Unreported	16	7	44%	12	75%
	Totals & Averages	225	136	60%	183	81%

Success and Retention by Gender

		Headcount	Success Count	Success Rate	Retention Count	Retention Rate
2003/04	Female	125	80	64%	106	85%
	Male	100	65	65%	85	85%
	Unreported	2	2	100%	2	100%
	Totals & Averages	227	147	65%	193	85%
2004/05	Female	142	98	69%	124	87%
	Male	101	59	58%	78	77%
	Unreported	3	2	67%	3	100%
	Totals & Averages	246	159	65%	205	83%
2005/06	Female	129	86	67%	109	84%
	Male	104	63	61%	86	83%
	Unreported	2			2	100%
	Totals & Averages	235	149	63%	197	84%
2006/07	Female	133	83	62%	106	80%
	Male	89	58	65%	78	88%
	Unreported	1				
	Totals & Averages	223	141	63%	184	83%
2007/08	Female	129	79	61%	105	81%
	Male	93	56	60%	75	81%
	Totals & Averages	222	135	61%	180	81%

Success and Retention by Day/Evening Status

		Headcount	Success Count	Success Rate	Retention Count	Retention Rate
2003/04	Day	132	83	63%	106	80%
	Evening	96	65	68%	88	92%
2004/05	Day	163	106	65%	136	83%
	Evening	83	53	64%	69	83%
2005/06	Day	166	98	59%	135	81%
	Evening	69	51	74%	62	90%
2006/07	Day	152	88	58%	120	79%
	Evening	72	54	75%	65	90%
2007/08	Day	137	74	54%	113	82%
	Evening	88	62	70%	70	80%

Source: SMCCCD Data Warehouse

Success and Retention by Age

		Headcount	Success Count	Success Rate	Retention Count	Retention Rate
2003/04	Under 18	3	1	33%	3	100%
	Age 18-22	155	101	65%	131	85%
	Age 23-28	44	29	66%	39	89%
	Age 29-39	17	10	59%	13	76%
	Age 40-49	7	5	71%	6	86%
	Age 50-59	2	2	100%	2	100%
	Totals & Averages	228	148	65%	194	85%
2004/05	Age 18-22	157	98	62%	131	83%
	Age 23-28	56	32	57%	42	75%
	Age 29-39	26	23	88%	25	96%
	Age 40-49	7	6	86%	7	100%
	Totals & Averages	246	159	65%	205	83%
2005/06	Age 18-22	155	93	60%	130	84%
	Age 23-28	55	36	65%	45	82%
	Age 29-39	17	13	76%	15	88%
	Age 40-49	6	5	83%	5	83%
	Age 50-59	2	2	100%	2	100%
Totals & Averages	235	149	63%	197	84%	
2006/07	Under 18	5	3	60%	4	80%
	Age 18-22	144	86	60%	111	77%
	Age 23-28	44	32	73%	40	91%
	Age 29-39	22	14	64%	21	95%
	Age 40-49	6	5	83%	6	100%
	Age 50-59	2	1	50%	2	100%
	Age 60+	1	1	100%	1	100%
Totals & Averages	224	142	63%	185	83%	
2007/08	Under 18	4	2	50%	4	100%
	Age 18-22	150	79	53%	115	77%
	Age 23-28	42	30	71%	38	90%
	Age 29-39	25	21	84%	22	88%
	Age 40-49	2	2	100%	2	100%
	Age 50-59	1	1	100%	1	100%
	Age 60+	1	1	100%	1	100%
Totals & Averages	225	136	60%	183	81%	

Source: SMCCCD Data Warehouse

Success and Retention by Enrollment Status

		Headcount	Success Count	Success Rate	Retention Count	Retention Rate
2003/04	Continuing Student	167	113	68%	141	84%
	First-Time Student	20	10	50%	20	100%
	First-Time Transfer Student	9	5	56%	6	67%
	Returning Student	22	12	55%	18	82%
	Returning Transfer Student	10	8	80%	9	90%
2004/05	Continuing Student	199	131	66%	166	83%
	First-Time Student	8	5	63%	8	100%
	First-Time Transfer Student	19	11	58%	16	84%
	Returning Student	15	8	53%	11	73%
	Returning Transfer Student	5	4	80%	4	80%
2005/06	Continuing Student	194	128	66%	164	85%
	First-Time Student	11	5	45%	9	82%
	First-Time Transfer Student	12	6	50%	11	92%
	Returning Student	10	5	50%	6	60%
	Returning Transfer Student	8	5	63%	7	88%
2006/07	Continuing Student	189	127	67%	155	82%
	Currently K-12	1	1	100%	1	100%
	First-Time Student	9	2	22%	6	67%
	First-Time Transfer Student	4	3	75%	4	100%
	Returning Student	11	3	27%	9	82%
	Returning Transfer Student	10	6	60%	10	100%
2007/08	Continuing Student	177	107	60%	143	81%
	Currently K-12	1	1	100%	1	100%
	First-Time Student	9	3	33%	8	89%
	First-Time Transfer Student	15	8	53%	12	80%
	Returning Student	13	8	62%	10	77%
	Returning Transfer Student	10	9	90%	9	90%

Source: SMCCCD Data Warehouse