

Department Productivity: By Year and By Term

	Census Headcount	End of Term Headcount	FTEF	FTES	WSCH	Load	Sections	Max Enroll
2003/04	2,620	2,050	11.20	267.46	8,024	716	56	2,511
2004/05	2,432	1,759	11.80	246.54	7,396	627	59	2,656
2005/06	2,259	1,657	11.80	228.53	6,856	581	59	2,701
2006/07	2,188	1,608	12.20	219.86	6,596	541	62	2,796
2007/08	2,601	1,888	13.60	262.72	7,882	580	69	3,163

	Census Headcount	End of Term Headcount	FTEF	FTES	WSCH	Load	Sections	Max Enroll
Fall 2003	1,073	856	4.60	110.65	3,320	722	23	1,018
Fall 2004	1,023	756	4.80	105.35	3,161	658	24	1,073
Fall 2005	903	646	4.60	92.51	2,775	603	23	1,028
Fall 2006	985	712	5.20	100.56	3,017	580	27	1,166
Fall 2007	1,068	757	5.80	109.47	3,284	566	30	1,318
Spring 2004	1,170	882	5.20	117.92	3,538	680	26	1,163
Spring 2005	1,017	688	5.40	102.34	3,070	569	27	1,208
Spring 2006	969	696	5.20	97.73	2,932	564	26	1,223
Spring 2007	896	646	5.40	90.03	2,701	500	27	1,270
Spring 2008	1,174	835	5.60	117.87	3,536	631	28	1,350
Summer 2003	377	312	1.40	38.89	1,167	833	7	330
Summer 2004	392	315	1.60	38.84	1,165	728	8	375
Summer 2005	387	315	2.00	38.29	1,149	574	10	450
Summer 2006	307	250	1.60	29.27	878	549	8	360
Summer 2007	359	296	2.20	35.38	1,061	482	11	495

Source: SMCCCD Data Warehouse

Census Headcount: Number of duplicated headcount at final census.

End of Term Headcount: Number of duplicated headcount at the end of the term.

FTEF: Total number of full time equivalent faculty assigned.

FTES: Total number of full time equivalent students enrolled at first census.

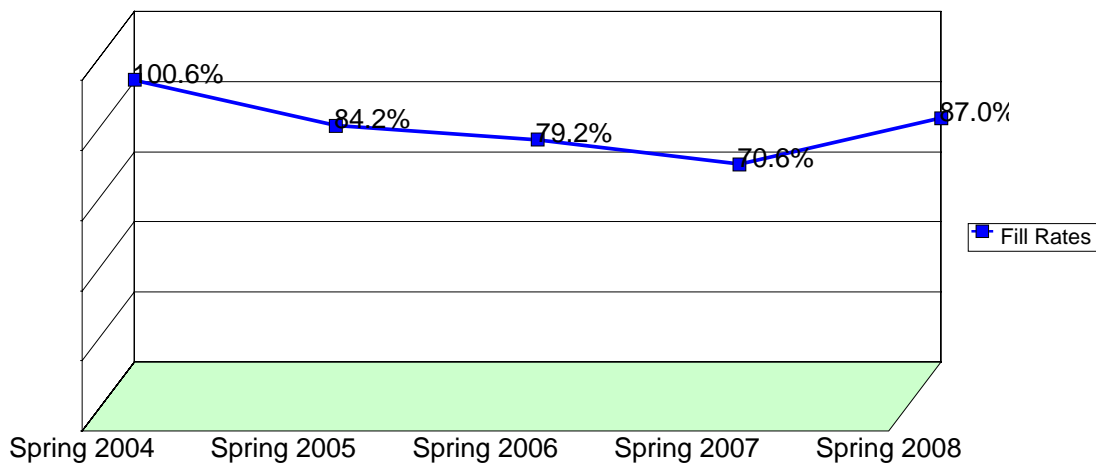
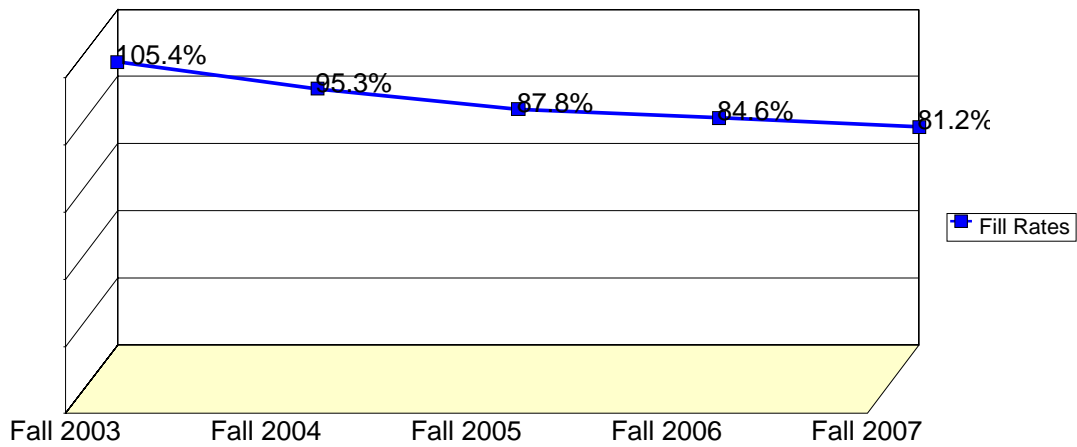
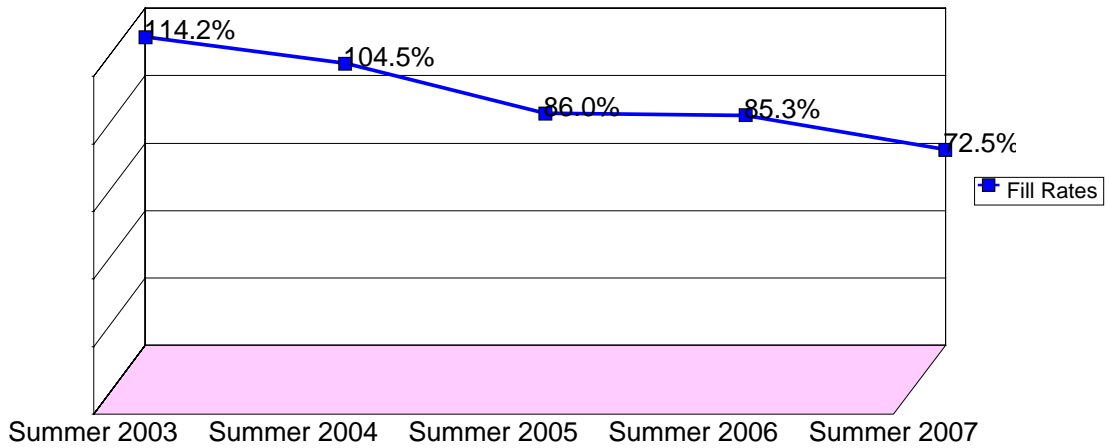
WSCH: Weekly student contact hours generated by census enrollments.

Load: The ratio of WSCH to FTEF, used to measure productivity.

Sections: Total number of sections offered per semester.

Max Enroll: The enrollment capacity or maximum enrollment as defined in curriculum.

Department Fill Rates by Term



Source: SMCCCD Data Warehouse

Fill Rates: The percent a class fills/enrolls based on capacity or enrollment maximum defined in the curriculum (does not include positive attendance, open entry/open exit or independent study classes).

Department Productivity: Term by Course

			Census	End of	FTEF	FTES	WSCH	Load	Sections	Max	
			Headcount	Term						Enroll	
Fall 2003	HIST	100	History Western Civ I	48	33	0.20	4.80	144	720	1	45
		101	History Western Civ II -Honors	24	18	0.20	2.40	72	360	1	28
		104	World Civilizations I	49	36	0.20	4.90	147	735	1	45
		108	Survey of American History	160	122	0.60	16.61	498	830	3	140
		201	United States History I	239	198	1.00	25.01	750	750	5	225
		202	United States History II	89	80	0.40	8.90	267	668	2	90
		235	History of Ethnic Groups in US	40	37	0.20	4.00	120	600	1	45
		240	History Ethnic Groups-CA	104	85	0.40	10.84	325	813	2	80
			History of Ethnic Groups in CA	51	42	0.20	5.61	168	842	1	45
		310	California History	180	134	0.80	18.68	561	701	4	185
		420	Survey of Latin American Hist.	44	32	0.20	4.40	132	660	1	45
		430	Early Asian Civilizations	45	39	0.20	4.50	135	675	1	45
Fall 2004	HIST	100	History Western Civ I	43	39	0.20	4.30	129	645	1	45
		104	World Civilizations I	50	43	0.20	5.00	150	750	1	45
		108	Survey of American History	140	102	0.60	14.50	435	725	3	140
		201	United States History I	223	168	1.00	23.00	690	690	5	225
			United States History I-HONORS	26	25	0.20	2.86	86	429	1	28
		202	United States History II	72	41	0.40	7.20	216	540	2	90
		235	History of Ethnic Groups in US	41	29	0.20	4.10	123	615	1	45
		240	History Ethnic Groups-CA	104	78	0.40	10.89	327	817	2	90
			History of Ethnic Groups in CA	47	29	0.20	5.17	155	775	1	45
		248	Women&The American Experience	16	12	0.20	1.60	48	240	1	45
		310	California History	179	127	0.80	18.53	556	695	4	185
		420	Survey of Latin American Hist.	39	29	0.20	3.90	117	585	1	45
		435	History of the Philippines	43	34	0.20	4.30	129	645	1	45
Fall 2005	HIST	100	History Western Civ I	49	30	0.20	4.90	147	735	1	45
		101	History Western Civ II -Honors	12	10	0.20	1.20	36	180	1	28
		104	World Civilizations I	41	35	0.20	4.10	123	615	1	45
		108	Survey of American History	142	105	0.60	14.68	440	734	3	140
		201	United States History I	209	154	1.00	21.33	640	640	5	225
		202	United States History II	51	31	0.40	5.10	153	383	2	90
		203	The United States Since 1945	16	8	0.20	1.60	48	240	1	45
		240	Hist-Ethnic Groups of CA-Hon	25	19	0.20	2.75	83	413	1	45
			History Ethnic Groups-CA	118	81	0.40	12.24	367	918	2	90
		310	California History	170	128	0.80	17.61	528	660	4	185
		420	Survey of Latin American Hist.	27	20	0.20	2.70	81	405	1	45
		435	History of the Philippines	43	25	0.20	4.30	129	645	1	45
		Fall 2006	HIST	100	History Western Civ I	67	50	0.40	6.70	201	503
101	History Western Civ II -Honors			15	13	0.20	1.50	45	225	1	28
104	World Civilizations I			50	39	0.20	5.00	150	750	1	45
108	Survey of American History			136	90	0.60	14.08	422	704	3	140
201	United States History I			244	192	1.00	24.99	750	750	5	225
	United States History I-Honors			17	10	0.20	1.70	51	255	1	45
202	United States History II			55	45	0.40	5.50	165	413	2	90
203	The United States Since 1945			10	7	0.20	1.00	30	150	1	45
240	Hist-Ethnic Groups of CA			40	30	0.20	4.40	132	660	1	45

						History Department 2003/04 to 2007/08				
		Census	End of	FTEF	FTES	WSCH	Load	Sections	Max	
		Headcount	Term						Enroll	
		History Ethnic Groups-CA	102	68	0.40	10.60	318	795	2	90
		History of Ethnic Groups in CA	36	24	0.20	3.60	108	540	1	45
	310	California History	144	97	0.80	14.59	438	547	4	185
	420	Survey of Latin American Hist.	25	18	0.20	2.50	75	375	1	45
	435	History of the Philippines	43	28	0.20	4.30	129	645	1	45
	690	Special Projects	1	1	0.00	0.10	3	#INF	1	3
Fall 2007	HIST	100 History Western Civ I	68	47	0.40	6.80	204	510	2	90
		104 World Civilizations I	43	30	0.20	4.30	129	645	1	45
		108 Survey of American History	132	86	0.60	13.58	407	679	3	140
		109 History of Europe Since 1945	17	8	0.20	1.70	51	255	1	45
		201 United States History I	263	189	1.20	26.80	804	670	6	270
		202 United States History II	54	37	0.40	5.40	162	405	2	90
		203 The United States Since 1945	17	11	0.20	1.70	51	255	1	45
		240 Hist-Ethnic Groups of CA	48	30	0.20	5.28	158	792	1	45
		History Ethnic Groups-CA	108	78	0.40	11.29	339	847	2	90
		History of Ethnic Groups in CA	43	28	0.20	4.30	129	645	1	45
	300	History of San Francisco	33	27	0.20	3.63	109	545	1	45
	310	California History	164	134	0.80	16.89	507	633	4	185
	420	Survey of Latin American Hist.	20	7	0.20	2.00	60	300	1	45
	432	Modern Asian Civilizations	6	5	0.20	0.60	18	90	1	45
	435	History of the Philippines	39	34	0.20	3.90	117	585	1	45
	461	Great Cities of the World I	13	6	0.20	1.30	39	195	1	45
	690	Special Projects	0	0	0.00				1	3
Spring 2004	HIST	100 History Western Civ I	84	62	0.40	8.40	252	630	2	90
		History Western Civ I-	55	43	0.20	5.50	165	825	1	45
		101 History Western Civ Ii	46	34	0.20	4.60	138	690	1	45
		106 World Civilizations II	23	11	0.20	2.30	69	345	1	45
		108 American History Survey	141	110	0.60	14.10	423	705	3	135
		Survey of American History	41	29	0.20	4.10	123	615	1	45
		201 United States History I	125	76	0.60	12.50	375	625	3	135
		202 United States History II	150	115	0.60	15.48	464	774	3	135
		240 Ethnic Groups in CA - Honors	24	17	0.20	2.40	72	360	1	28
		Ethnic History In U.S.	44	28	0.20	4.84	145	726	1	45
		History of Ethnic Groups in CA	110	87	0.40	11.00	330	825	2	90
	244	African American History	43	39	0.20	4.30	129	645	1	45
	310	California History	198	166	0.80	19.80	594	743	4	190
	420	Survey of Latin American Hist.	31	22	0.20	3.10	93	465	1	45
	435	History of the Philippines	55	43	0.20	5.50	165	825	1	45
Spring 2005	HIST	100 History Western Civ I	73	46	0.40	7.30	219	548	2	90
		History Western Civ I-	38	20	0.20	3.80	114	570	1	45
		101 History Western Civ Ii	24	9	0.20	2.40	72	360	1	45
		106 World Civilizations II	23	15	0.20	2.30	69	345	1	45
		108 American History Survey	122	77	0.60	12.20	366	610	3	135
		Survey of American History	42	24	0.20	4.20	126	630	1	45
		201 United States History I	140	96	0.80	13.85	416	520	4	180
		202 United States History II	100	85	0.60	10.38	311	519	3	135
		240 Ethnic Groups in CA - Honors	23	6	0.20	2.30	69	345	1	28
		Ethnic History In U.S.	41	25	0.20	4.51	135	677	1	45

			Census Headcount	End of Term Headcount	FTEF	FTES	WSCH	Load	Sections	Max Enroll	
		History of Ethnic Groups in CA	84	52	0.40	8.40	252	630	2	90	
	244	African American History	38	32	0.20	3.80	114	570	1	45	
	310	California History	195	148	0.80	19.50	585	731	4	190	
	420	Survey of Latin American Hist.	31	21	0.20	3.10	93	465	1	45	
	430	Early Asian Civilizations	43	32	0.20	4.30	129	645	1	45	
Spring 2006	HIST 100	History Western Civ I	59	38	0.40	5.90	177	443	2	90	
		History Western Civ I-	33	16	0.20	3.30	99	495	1	45	
	106	World Civilizations II	13	11	0.20	1.30	39	195	1	45	
	108	American History Survey	108	70	0.40	10.80	324	810	2	125	
	201	United States History I	160	112	0.80	16.00	480	600	4	180	
		United States History I-Honors	23	18	0.20	2.30	69	345	1	28	
	202	United States History II	104	88	0.60	10.40	312	520	3	135	
	235	History of Ethnic Groups in US	39	23	0.20	3.90	117	585	1	45	
		Ethnic History In U.S.	46	32	0.20	5.06	152	759	1	45	
			History of Ethnic Groups in CA	133	109	0.60	13.67	410	683	3	135
	244	African American History	30	24	0.20	3.00	90	450	1	45	
	310	California History	172	126	0.80	17.20	516	645	4	215	
	420	Survey of Latin American Hist.	21	11	0.20	2.10	63	315	1	45	
	430	Early Asian Civilizations	28	18	0.20	2.80	84	420	1	45	
	Spring 2007	HIST 100	History Western Civ I	62	39	0.40	6.20	186	465	2	90
Western Civ I -Honors			17	15	0.20	1.70	51	255	1	45	
101		History Western Civ Ii	10	8	0.20	1.00	30	150	1	45	
106		World Civilizations II	17	16	0.20	1.70	51	255	1	45	
108		American History Survey	79	41	0.40	7.90	237	593	2	125	
201		United States History I	171	119	0.80	17.10	513	641	4	180	
202		United States History II	107	87	0.60	10.70	321	535	3	135	
235		History of Ethnic Groups in US	43	35	0.20	4.30	129	645	1	45	
240		Ethnic History In U.S.	30	26	0.20	3.00	90	450	1	45	
		Hist-Ethnic Groups inCA-Honors	16	14	0.20	1.60	48	240	1	30	
		History of Ethnic Groups in CA	128	87	0.60	13.23	397	661	3	135	
244		African American History	21	18	0.20	2.10	63	315	1	45	
310		California History	152	108	0.80	15.20	456	570	4	215	
420		Survey of Latin American Hist.	18	11	0.20	1.80	54	270	1	45	
430		Early Asian Civilizations	25	22	0.20	2.50	75	375	1	45	
Spring 2008	HIST 100	History Western Civ I	64	40	0.40	6.40	192	480	2	90	
		World Civilizations II	26	11	0.20	2.60	78	390	1	45	
	108	American History Survey	99	63	0.40	9.90	297	743	2	125	
		Survey of American History	29	21	0.20	2.90	87	435	1	45	
	201	United States History I	206	142	0.80	20.60	618	773	4	180	
		United States History I-Honors	17	16	0.20	1.70	51	255	1	30	
	202	United States History II	153	129	0.80	15.30	459	574	4	180	
	235	History of Ethnic Groups in US	79	44	0.20	7.90	237	1,185	1	80	
	240	History of Ethnic Groups in CA	164	110	0.80	16.87	506	633	4	180	
	244	African American History	42	37	0.20	4.20	126	630	1	45	
	300	History of San Francisco	40	36	0.20	4.00	120	600	1	45	
	310	California History	200	146	0.80	20.00	600	750	4	215	

			Census Headcount	End of Term Headcount	FTEF	FTES	WSCH	Load	Sections	Max Enroll
		420	24	17	0.20	2.40	72	360	1	45
		430	31	23	0.20	3.10	93	465	1	45
Summer 2003	HIST	100	47	40	0.20	4.73	142	709	1	45
		201	111	94	0.40	11.40	342	855	2	90
		202	33	21	0.20	3.47	104	520	1	45
		240	73	55	0.20	7.68	230	1,151	1	60
		310	113	102	0.40	11.62	349	872	2	90
Summer 2004	HIST	100	38	33	0.20	3.82	115	573	1	45
		201	120	87	0.40	12.08	362	906	2	90
		202	31	23	0.20	3.12	94	469	1	45
		240	121	103	0.40	11.79	354	884	2	105
		310	82	69	0.40	8.02	241	602	2	90
Summer 2005	HIST	100	57	46	0.40	5.74	172	430	2	90
		108	14	7	0.20	1.28	38	192	1	45
		201	90	73	0.40	9.06	272	680	2	90
		202	48	42	0.20	4.84	145	725	1	45
		240	87	67	0.40	8.49	255	637	2	90
		310	91	80	0.40	8.88	267	666	2	90
Summer 2006	HIST	108	32	28	0.20	3.01	90	452	1	45
		201	77	56	0.40	7.13	214	535	2	90
		202	42	38	0.20	4.00	120	600	1	45
		240	80	62	0.40	7.86	236	590	2	90
		310	76	66	0.40	7.26	218	545	2	90
Summer 2007	HIST	100	44	37	0.40	4.31	129	323	2	90
		108	26	26	0.20	2.45	74	368	1	45
		201	96	80	0.40	9.70	291	728	2	90
		202	29	26	0.20	2.87	86	431	1	45
		240	89	69	0.40	8.50	255	637	2	90
		248	13	9	0.20	1.29	39	193	1	45
		310	62	49	0.40	6.26	188	470	2	90

Source: SMCCCD Data Warehouse

Census Headcount: Number of duplicated headcount at final census.

End of Term Headcount: Number of duplicated headcount at the end of the term.

FTEF: Total number of full time equivalent faculty assigned.

FTES: Total number of full time equivalent students enrolled at first census.

WSCH: Weekly student contact hours generated by census enrollments.

Load: The ratio of WSCH to FTEF, used to measure productivity.

Sections: Total number of sections offered per semester.

Max Enroll: The enrollment capacity or maximum enrollment as defined in curriculum.