

Department Enrollment

Enrollment by Term

FA03	FA04	FA05	FA06	FA07	SP04	SP05	SP06	SP07	Sp08	SU03	SU04	SU05	SU06	Su07
1,028	967	865	940	1,020	1,099	957	925	847	1,109	364	374	368	287	345

Enrollment by Gender

	2003/04		2004/05		2005/06		2006/07		2007/08		Change 06/07-07/08	5 Year Row Total & Average	
Female	1,075	49%	1,040	52%	943	48%	890	49%	1,031	47%	16%	4,979	49%
Male	1,028	50%	945	47%	920	51%	874	49%	1,061	52%	21%	4,828	50%
Unreported	19	1%	18	1%	19	1%	27	2%	29	1%	7%	112	1%
Column Total	2,122	100%	2,003	100%	1,882	100%	1,791	100%	2,121	100%	18%	9,919	100%

Enrollment by Ethnicity

	2003/04		2004/05		2005/06		2006/07		2007/08		Change 06/07-07/08	5 Year Row Total & Average	
African American	92	4%	83	3%	84	4%	79	4%	99	4%	25%	437	4%
Asian	687	28%	565	25%	558	26%	513	25%	597	24%	16%	2920	26%
Filipino	566	24%	510	22%	422	20%	430	21%	532	21%	24%	2460	21%
Hispanic	467	18%	445	19%	407	18%	411	19%	530	21%	29%	2260	19%
Native American	10	0%	13	0%	10	0%	9	0%	9	0%	0%	51	0%
Other	54	2%	68	3%	63	3%	46	2%	55	3%	20%	286	3%
White	536	20%	524	23%	511	23%	444	21%	491	20%	11%	2506	21%
Unreported	79	3%	90	4%	103	5%	142	7%	161	7%	13%	575	5%
Column Total	2491	100%	2298	100%	2158	100%	2074	100%	2474	100%	19%	11495	100%

Enrollment by Age

	2003/04		2004/05		2005/06		2006/07		2007/08		Change 06/07-07/08	5 Year Row Total & Average	
Under 18	33	2%	38	2%	25	1%	39	2%	46	3%	18%	181	2%
Age 18-22	1,408	69%	1,326	69%	1,270	70%	1,221	72%	1,389	72%	14%	6,614	70%
Age 23-28	424	20%	391	20%	372	20%	341	18%	448	18%	31%	1,976	19%
Age 29-39	175	6%	166	7%	146	6%	129	6%	161	5%	25%	777	6%
Age 40-49	59	2%	64	2%	62	2%	45	1%	71	2%	58%	301	2%
Age 50-59	34	1%	27	1%	16	0%	20	1%	23	1%	15%	120	1%
Age 60+	4	0%	4	0%	3	0%	5	0%	3	0%	-40%	19	0%
Column Total	2,137	100%	2,016	100%	1,894	100%	1,800	100%	2,141	100%	19%	9,988	100%

Source: SMCCCD Data Warehouse

*Note: Counts and percents are based on census figures for summer, fall and spring except where noted.

**Note: The variations in total numbers each year within the demographic segments are due to changes students make from term to term in reporting their demographic status.

Enrollment by Status

	2003/04		2004/05		2005/06		2006/07		2007/08		Change 06/07-07/08	5 Year Row Total & Average	
Continuing	1,653	76%	1,550	77%	1,442	76%	1,374	76%	1,641	73%	19%	7,660	76%
Currently K-12	15	1%	25	1%	13	1%	20	1%	25	2%	25%	98	1%
First-Time	156	7%	121	6%	138	7%	150	8%	130	9%	-13%	695	7%
First-Time Transfer	146	7%	124	6%	123	6%	97	5%	137	9%	41%	627	7%
Returning	181	8%	156	7%	145	7%	121	6%	151	5%	25%	754	6%
Returning Transfer	49	2%	67	3%	73	3%	85	4%	98	3%	15%	372	3%
Column Total	2,200	100%	2,043	100%	1,934	100%	1,847	100%	2,182	100%	18%	10,206	100%

Enrollment by Course-Taking Pattern (Fall and Spring only)

	2003/04		2004/05		2005/06		2006/07		2007/08		Change 06/07-07/08	5 Year Row Total & Average	
Day	1,545	74%	1,433	71%	1,399	76%	1,345	75%	1,579	77%	17%	7,301	75%
Evening	609	26%	616	28%	517	24%	487	24%	572	22%	17%	2,801	25%
Day and Evening	20	1%	19	1%	18	1%	23	1%	19	1%	-17%	99	1%
Column Total	2,174	100%	2,068	100%	1,934	100%	1,855	100%	2,170	100%	17%	10,201	100%

Enrollment by Educational Goal

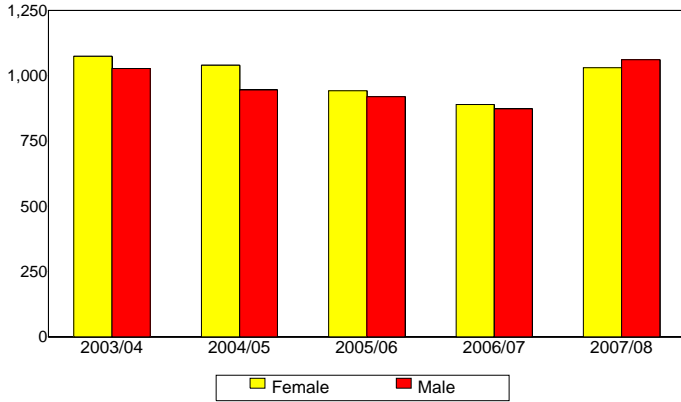
	2003/04		2004/05		2005/06		2006/07		2007/08		Change 06/07-07/08	5 Year Row Total & Average	
Transfer	1,652	78%	1,608	80%	1,490	79%	1,472	83%	1,363	64%	-7%	7,585	76%
AA/AS w/o Transfer	171	7%	146	6%	124	6%	87	4%	84	3%	-3%	612	5%
Certificate w/o Transfer	25	1%	17	1%	23	1%	12	1%	14	1%	17%	91	1%
Acquire/Update Job Skills	33	1%	29	1%	27	1%	32	2%	36	2%	13%	157	1%
Educational Development	33	1%	40	2%	72	4%	54	3%	45	2%	-17%	244	2%
Improve Basic Skills	13	1%	12	1%	7	0%	10	1%	22	1%	120%	64	1%
Undecided	236	11%	185	9%	168	9%	144	8%	146	7%	1%	879	9%
Unreported									461	20%		461	5%
Column Total	2,163	100%	2,037	100%	1,911	100%	1,811	100%	2,171	100%	20%	10,093	100%

Source: SMCCCD Data Warehouse

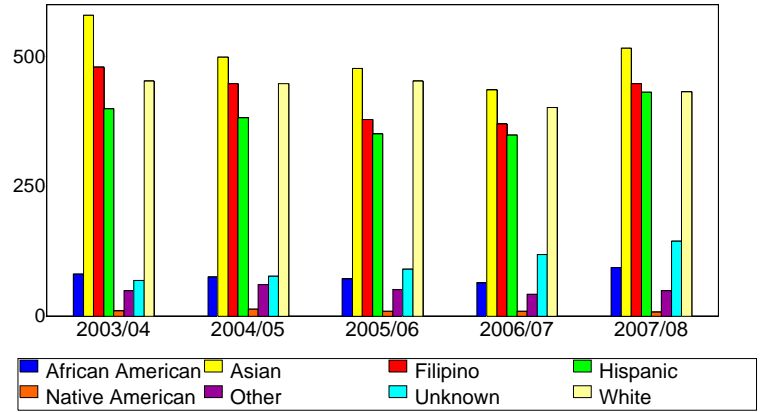
*Note: Counts and percents are based on census figures for summer, fall and spring except where noted.

**Note: The variations in total numbers each year within the demographic segments are due to changes students make from term to term in reporting their demographic status.

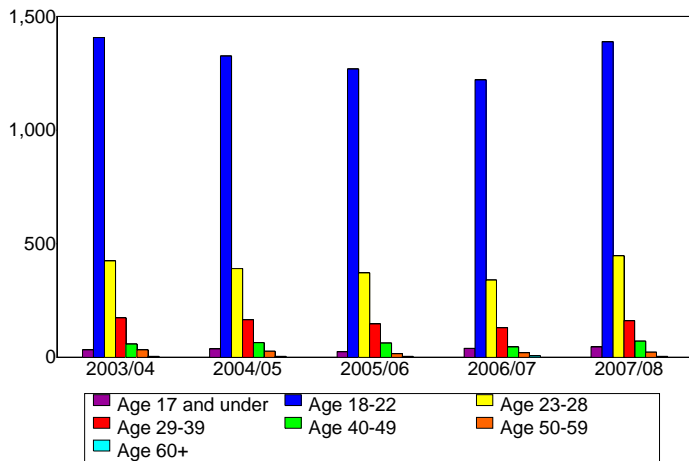
Enrollment by Gender



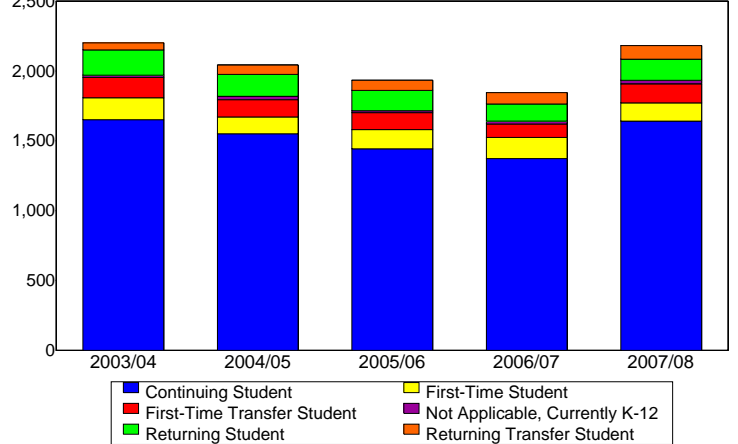
Enrollment by Ethnicity



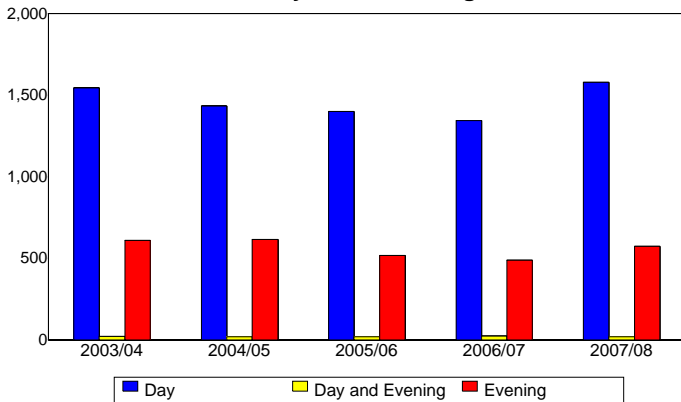
Enrollment by Student Age



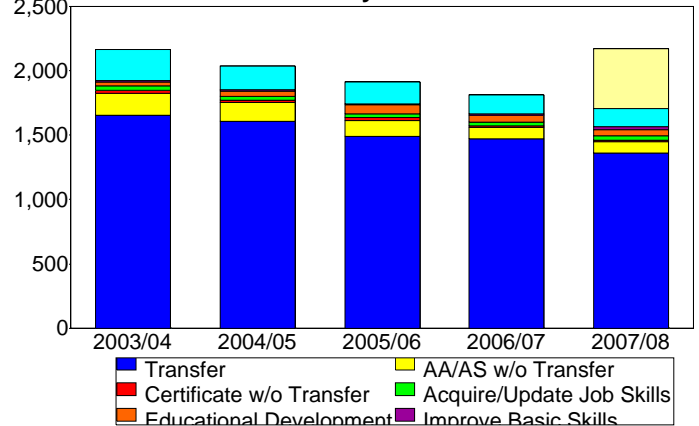
Enrollment by Enrollment Status



Enrollment by Course-Taking Pattern



Enrollment by Educational Goal



Source: SMCCCD Data Warehouse