

## Department Success and Retention

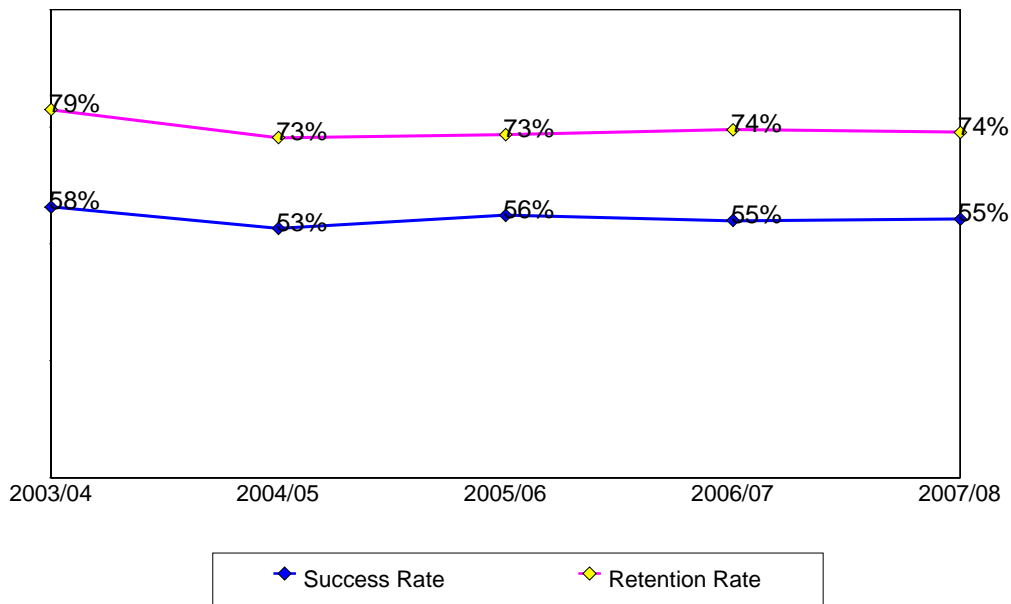
This report contains success and retention rates by various demographic segments and by course. Annual data are an aggregate of the fall and spring semesters. The following parameters have been applied:

- Success Counts: Number of students with A,B,C,CR grades.
- Success Rate: The percentage of students who complete a course with a grade of A,B,C,CR out of total enrollments.
- Retention Counts: Number of students with A,B,C,D,F,CR,NC, I grades.
- Retention Rate: The percentage of students who complete a course with a grade of A,B,C,D,F,CR,NC, I out of total headcount.

### Annual Success and Retention

	Headcount	Success Count	Success Rate	Retention Count	Retention Rate
2003/04	2,206	1,277	58%	1,736	79%
2004/05	1,991	1,061	53%	1,447	73%
2005/06	1,833	1,028	56%	1,344	73%
2006/07	1,827	1,004	55%	1,359	74%
2007/08	2,157	1,193	55%	1,593	74%
Change from 2006/07 to 2007/08	330	189	0%	234	-1%
<b>Totals &amp; Averages</b>	<b>10,014</b>	<b>5,563</b>	<b>56%</b>	<b>7,479</b>	<b>75%</b>

Annual (Fall/Spring) Success and Retention Rates



Source: SMCCCD Data Warehouse

### Success and Retention By Term

	Headcount	Success Count	Success Rate	Retention Count	Retention Rate
Fall 2003	1,054	614	58%	855	81%
Fall 2004	1,000	569	57%	756	76%
Fall 2005	881	474	54%	646	73%
Fall 2006	960	514	54%	713	74%
Fall 2007	1,029	578	56%	758	74%
Spring 2004	1,152	663	58%	881	76%
Spring 2005	991	492	50%	691	70%
Spring 2006	952	554	58%	698	73%
Spring 2007	867	490	57%	646	75%
Spring 2008	1,128	615	55%	835	74%
<b>Totals &amp; Averages</b>	10,014	5,563	56%	7,479	75%

### Grade Distribution

	A		B		B-	C		D		F		CR	NC		W			
Fall 2003	175	17%	231	23%		194	19%	98	10%	138	14%				197	19%		
Fall 2004	166	16%	224	23%		166	17%	66	7%	112	12%				236	25%		
Fall 2005	112	13%	195	22%		158	19%	67	8%	99	12%				229	26%		
Fall 2006	111	11%	205	21%		191	21%	75	8%	121	13%				242	26%		
Fall 2007	161	15%	210	21%	1	0%	188	19%	59	6%	110	12%	2	0%	2	0%	267	28%
Spring 2004	192	17%	219	19%		227	21%	94	8%	120	11%				267	24%		
Spring 2005	138	15%	179	18%		161	16%	52	5%	145	15%				288	30%		
Spring 2006	153	16%	219	23%		170	19%	42	5%	100	11%				248	27%		
Spring 2007	101	12%	181	21%		201	23%	48	6%	97	13%				213	25%		
Spring 2008	163	13%	239	22%		202	19%	80	7%	129	12%	1	0%		281	27%		

Source: SMCCCD Data Warehouse

### Success and Retention by Ethnicity

		Headcount	Success Count	Success Rate	Retention Count	Retention Rate
2003/04	African American	88	31	35%	69	78%
	Asian	571	339	59%	439	77%
	Filipino	519	285	55%	419	81%
	Hispanic	418	216	52%	311	74%
	Native American	7	4	57%	5	71%
	Other	56	29	52%	43	77%
	White	493	340	69%	404	82%
	Unreported	54	33	61%	46	85%
	<b>Totals &amp; Averages</b>	2,206	1,277	58%	1,736	79%
2004/05	African American	67	24	36%	51	76%
	Asian	453	238	53%	311	69%
	Filipino	444	223	50%	317	71%
	Hispanic	412	210	51%	300	73%
	Native American	10	6	60%	8	80%
	Other	54	26	48%	36	67%
	White	469	297	63%	370	79%
	Unreported	82	37	45%	54	66%
	<b>Totals &amp; Averages</b>	1,991	1,061	53%	1,447	73%
2005/06	African American	72	26	36%	49	68%
	Asian	453	251	55%	321	71%
	Filipino	364	178	49%	252	69%
	Hispanic	361	200	55%	272	75%
	Native American	9	2	22%	4	44%
	Other	51	31	61%	44	86%
	White	440	283	64%	338	77%
	Unreported	83	57	69%	64	77%
	<b>Totals &amp; Averages</b>	1,833	1,028	56%	1,344	73%
2006/07	African American	62	32	52%	53	85%
	Asian	430	254	59%	311	72%
	Filipino	373	182	49%	258	69%
	Hispanic	379	179	47%	264	70%
	Native American	9	3	33%	7	78%
	Other	43	27	63%	35	81%
	White	404	247	61%	325	80%
	Unreported	127	80	63%	106	83%
	<b>Totals &amp; Averages</b>	1,827	1,004	55%	1,359	74%
2007/08	African American	87	37	43%	66	76%
	Asian	486	278	57%	340	70%
	Filipino	456	226	50%	311	68%
	Hispanic	474	245	52%	340	72%
	Native American	8	6	75%	8	100%
	Other	52	27	52%	38	73%
	White	453	291	64%	373	82%
	Unreported	141	83	59%	117	83%
	<b>Totals &amp; Averages</b>	2,157	1,193	55%	1,593	74%

Source: SMCCCD Data Warehouse

### Success and Retention by Gender

		Headcount	Success Count	Success Rate	Retention Count	Retention Rate
2003/04	Female	1,084	661	61%	863	80%
	Male	1,107	606	55%	859	78%
	Unreported	8	6	75%	7	88%
	<b>Totals &amp; Averages</b>	2,199	1,273	58%	1,729	79%
2004/05	Female	996	552	55%	715	72%
	Male	976	499	51%	718	74%
	Unreported	11	6	55%	8	73%
	<b>Totals &amp; Averages</b>	1,983	1,057	53%	1,441	73%
2005/06	Female	872	516	59%	656	75%
	Male	945	504	53%	677	72%
	Unreported	7	4	57%	5	71%
	<b>Totals &amp; Averages</b>	1,824	1,024	56%	1,338	73%
2006/07	Female	891	506	57%	658	74%
	Male	909	482	53%	680	75%
	Unreported	16	8	50%	12	75%
	<b>Totals &amp; Averages</b>	1,816	996	55%	1,350	74%
2007/08	Female	1,024	603	59%	770	75%
	Male	1,097	565	52%	791	72%
	Unreported	18	12	67%	16	89%
	<b>Totals &amp; Averages</b>	2,139	1,180	55%	1,577	74%

### Success and Retention by Day/Evening Status

		Headcount	Success Count	Success Rate	Retention Count	Retention Rate
2003/04	Day	1,690	958	57%	1,332	79%
	Evening	516	319	62%	404	78%
2004/05	Day	1,503	759	50%	1,063	71%
	Evening	488	302	62%	384	79%
2005/06	Day	1,431	782	55%	1,038	73%
	Evening	402	246	61%	306	76%
2006/07	Day	1,407	745	53%	1,035	74%
	Evening	420	259	62%	324	77%
2007/08	Day	1,639	862	53%	1,189	73%
	Evening	518	331	64%	404	78%

Source: SMCCCD Data Warehouse

### Success and Retention by Age

		Headcount	Success Count	Success Rate	Retention Count	Retention Rate
2003/04	Under 18	28	19	68%	24	86%
	Age 18-22	1,504	821	55%	1,167	78%
	Age 23-28	426	255	60%	336	79%
	Age 29-39	166	113	68%	137	83%
	Age 40-49	47	39	83%	42	89%
	Age 50-59	31	27	87%	27	87%
	Age 60+	4	3	75%	3	75%
	<b>Totals &amp; Averages</b>	2,206	1,277	58%	1,736	79%
2004/05	Under 18	25	13	52%	19	76%
	Age 18-22	1,388	701	51%	985	71%
	Age 23-28	350	183	52%	254	73%
	Age 29-39	141	96	68%	116	82%
	Age 40-49	59	45	76%	47	80%
	Age 50-59	23	20	87%	23	100%
	Age 60+	5	3	60%	3	60%
	<b>Totals &amp; Averages</b>	1,991	1,061	53%	1,447	73%
2005/06	Under 18	19	10	53%	13	68%
	Age 18-22	1,270	678	53%	933	73%
	Age 23-28	355	205	58%	252	71%
	Age 29-39	123	84	68%	90	73%
	Age 40-49	53	39	74%	44	83%
	Age 50-59	10	9	90%	9	90%
	Age 60+	3	3	100%	3	100%
	<b>Totals &amp; Averages</b>	1,833	1,028	56%	1,344	73%
2006/07	Under 18	23	16	70%	20	87%
	Age 18-22	1,298	670	52%	955	74%
	Age 23-28	333	194	58%	246	74%
	Age 29-39	119	79	66%	89	75%
	Age 40-49	32	26	81%	29	91%
	Age 50-59	17	14	82%	15	88%
	Age 60+	5	5	100%	5	100%
	<b>Totals &amp; Averages</b>	1,827	1,004	55%	1,359	74%
2007/08	Under 18	35	18	51%	24	69%
	Age 18-22	1,459	754	52%	1,053	72%
	Age 23-28	432	248	57%	322	75%
	Age 29-39	151	108	72%	126	83%
	Age 40-49	56	45	80%	47	84%
	Age 50-59	22	18	82%	19	86%
	Age 60+	2	2	100%	2	100%
	<b>Totals &amp; Averages</b>	2,157	1,193	55%	1,593	74%

Source: SMCCCD Data Warehouse

**Success and Retention by Enrollment Status**

		<b>Headcount</b>	<b>Success Count</b>	<b>Success Rate</b>	<b>Retention Count</b>	<b>Retention Rate</b>
2003/04	Continuing Student	1,749	1,035	<b>59%</b>	1,383	<b>79%</b>
	Currently K-12	16	11	<b>69%</b>	12	<b>75%</b>
	First-Time Student	139	67	<b>48%</b>	108	<b>78%</b>
	First-Time Transfer Student	115	68	<b>59%</b>	91	<b>79%</b>
	Returning Student	153	79	<b>52%</b>	115	<b>75%</b>
	Returning Transfer Student	34	17	<b>50%</b>	27	<b>79%</b>
2004/05	Continuing Student	1,577	843	<b>53%</b>	1,151	<b>73%</b>
	Currently K-12	10	7	<b>70%</b>	9	<b>90%</b>
	First-Time Student	117	55	<b>47%</b>	78	<b>67%</b>
	First-Time Transfer Student	99	54	<b>55%</b>	71	<b>72%</b>
	Returning Student	134	67	<b>50%</b>	95	<b>71%</b>
	Returning Transfer Student	54	35	<b>65%</b>	43	<b>80%</b>
2005/06	Continuing Student	1,455	847	<b>58%</b>	1,082	<b>74%</b>
	Currently K-12	7	5	<b>71%</b>	7	<b>100%</b>
	First-Time Student	133	58	<b>44%</b>	84	<b>63%</b>
	First-Time Transfer Student	83	42	<b>51%</b>	62	<b>75%</b>
	Returning Student	111	53	<b>48%</b>	78	<b>70%</b>
	Returning Transfer Student	43	22	<b>51%</b>	30	<b>70%</b>
2006/07	Continuing Student	1,429	814	<b>57%</b>	1,057	<b>74%</b>
	Currently K-12	6	3	<b>50%</b>	4	<b>67%</b>
	First-Time Student	145	60	<b>41%</b>	109	<b>75%</b>
	First-Time Transfer Student	78	41	<b>53%</b>	58	<b>74%</b>
	Returning Student	98	51	<b>52%</b>	79	<b>81%</b>
	Returning Transfer Student	71	35	<b>49%</b>	52	<b>73%</b>
2007/08	Continuing Student	1,733	993	<b>57%</b>	1,295	<b>75%</b>
	Currently K-12	10	3	<b>30%</b>	7	<b>70%</b>
	First-Time Student	117	45	<b>38%</b>	76	<b>65%</b>
	First-Time Transfer Student	111	55	<b>50%</b>	79	<b>71%</b>
	Returning Student	109	55	<b>50%</b>	78	<b>72%</b>
	Returning Transfer Student	77	42	<b>55%</b>	58	<b>75%</b>

Source: SMCCCD Data Warehouse