

Department Productivity: By Year and By Term

	Census Headcount	End of Term Headcount	FTEF	FTES	WSCH	Load	Sections	Max Enroll
2003/04	831	734	3.03	93.56	2,807	925	20	805
2004/05	680	610	3.23	69.89	2,097	648	20	709
2005/06	653	574	3.33	91.61	2,748	825	20	618
2006/07	624	504	3.52	63.03	1,891	538	22	730
2007/08	671	571	3.40	67.53	2,026	596	19	635

	Census Headcount	End of Term Headcount	FTEF	FTES	WSCH	Load	Sections	Max Enroll
Fall 2003	401	353	1.43	40.23	1,207	842	10	400
Fall 2004	268	246	1.20	27.29	819	682	6	264
Fall 2005	283	252	1.40	29.82	895	639	8	268
Fall 2006	279	231	1.57	29.87	896	572	8	275
Fall 2007	254	219	1.30	25.99	780	600	7	225
Spring 2004	345	313	1.40	34.97	1,049	749	8	320
Spring 2005	314	276	1.63	29.86	896	548	11	345
Spring 2006	273	244	1.53	51.98	1,559	1,017	10	260
Spring 2007	259	207	1.35	24.67	740	548	11	335
Spring 2008	331	281	1.50	33.45	1,003	669	9	300
Summer 2003	85	68	0.20	18.37	551	2,755	2	85
Summer 2004	98	88	0.40	12.74	382	955	3	100
Summer 2005	97	78	0.40	9.81	294	736	2	90
Summer 2006	86	66	0.60	8.49	255	425	3	120
Summer 2007	86	71	0.60	8.09	243	405	3	110

Source: SMCCCD Data Warehouse

*Note: Report includes the following crosslisted courses: BUS 485, CRER 665. Interdepartmental crosslisted courses are included in fill rate figures only. Crosslisted courses have been combined to calculate a single fill rate.

Census Headcount: Number of duplicated headcount at final census.

End of Term Headcount: Number of duplicated headcount at the end of the term.

FTEF: Total number of full time equivalent faculty assigned.

FTES: Total number of full time equivalent students enrolled at first census.

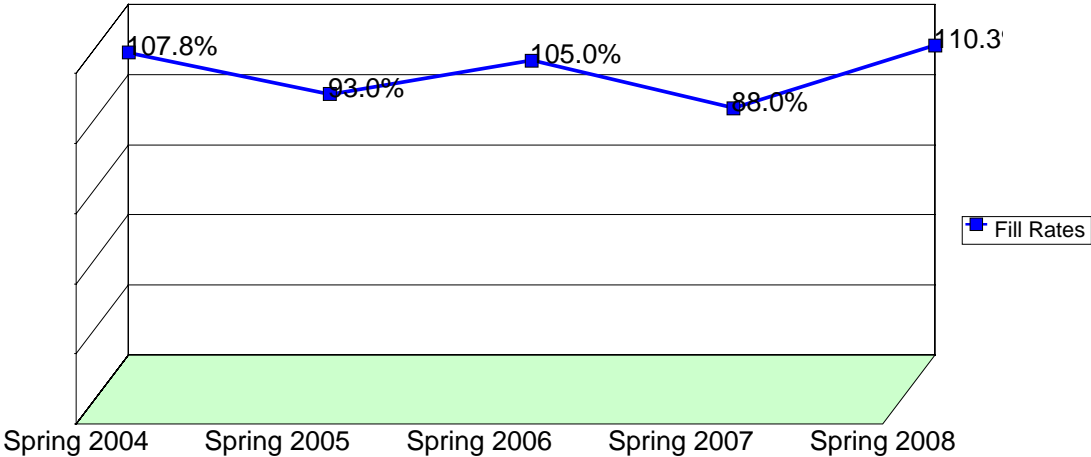
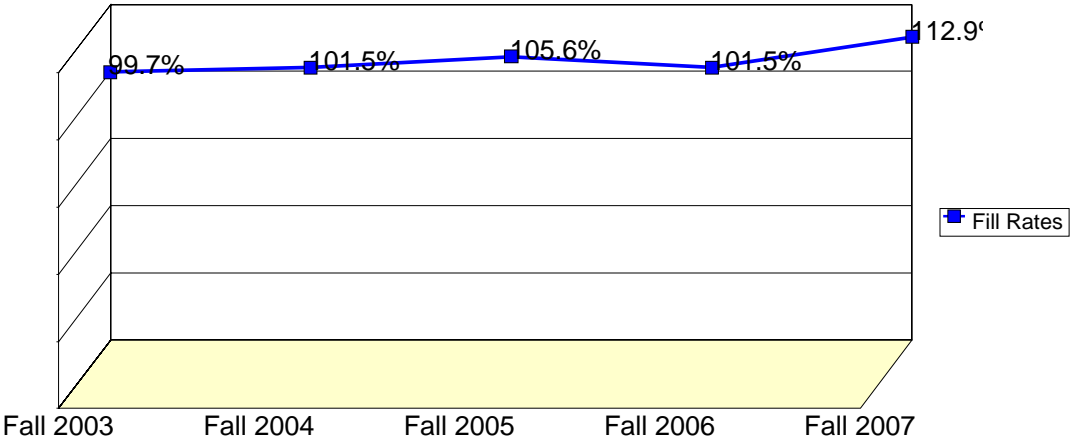
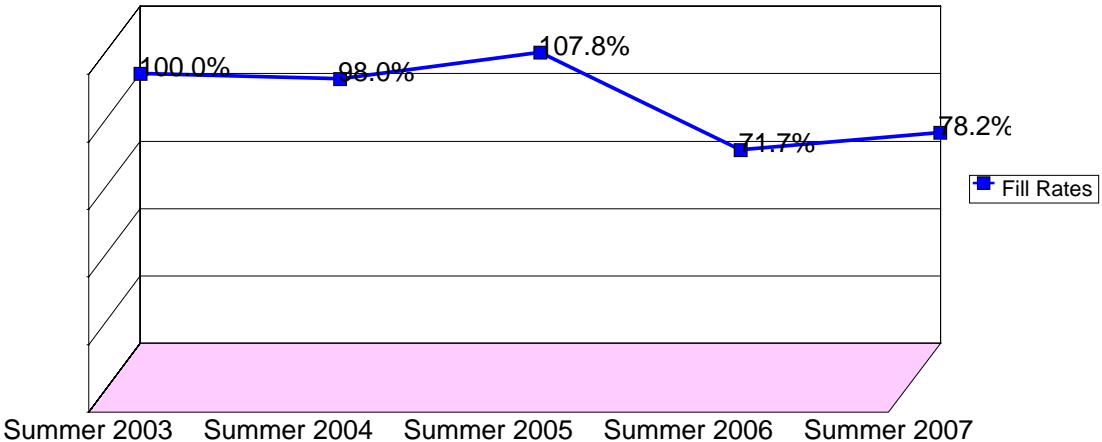
WSCH: Weekly student contact hours generated by census enrollments.

Load: The ratio of WSCH to FTEF, used to measure productivity.

Sections: Total number of sections offered per semester.

Max Enroll: The enrollment capacity or maximum enrollment as defined in curriculum.

Department Fill Rates by Term



Source: SMCCCD Data Warehouse

*Note: Report includes the following crosslisted courses: BUS 485, CRER 665. Crosslisted courses have been combined to calculate a single fill rate.

Fill Rates: The percent a class fills/enrolls based on capacity or enrollment maximum defined in the curriculum (does not include positive attendance or open entry/open exit classes).

Department Productivity: Term by Course

				Census Headcount	End of Term Headcount	FTEF	FTES	WSCH	Load	Sections	Max Enrc	
Fall 2003	HSCI	100	General Health Education	42	30	0.20	4.20	126	630	1	45	
		130	Human Sexuality	290	255	1.20	29.43	883	736	6	280	
		436	Pharm Tech-Clinical Externship	27	27	0.00	6.17	185	#INF	1	30	
		665	Exploring Health Careers	42	41	0.03	0.43	13	384	1	40	
		690	Special Projects in HSCI	0	0	0.00				1	5	
Fall 2004	HSCI	100	General Health Education	45	37	0.20	4.50	135	675	1	44	
		130	Human Sexuality	223	209	1.00	22.79	684	684	5	220	
Fall 2005	HSCI	100	General Health Education	34	29	0.20	3.40	102	510	1	35	
		130	Human Sexuality	196	174	1.00	19.95	599	599	5	185	
		484	Medical Terminology	32	28	0.20	3.52	106	528	1	28	
		680	Gateway to Health Careers	21	21	0.00	2.95	89	#INF	1	20	
Fall 2006	HSCI	100	General Health Education	36	25	0.20	3.60	108	540	1	40	
		130	Human Sexuality	193	162	1.00	19.61	588	588	5	195	
		680	Gateway to Health Careers	20	18	0.27	3.36	101	378	1	25	
	ZC	HSCI	484	Medical Terminology	30	26	0.10	3.30	99	990	1	30
Fall 2007	HSCI	100	General Health Education	37	33	0.20	3.70	111	555	1	35	
		130	Human Sexuality	191	164	1.00	19.43	583	583	5	175	
	ZC	HSCI	484	Medical Terminology	26	22	0.10	2.86	86	858	1	30
Spring 2004	HSCI	100	General Health Science	35	32	0.20	3.50	105	525	1	45	
		130	Human Sexuality	310	281	1.20	31.47	944	787	6	270	
		690	Special Projects	0	0	0.00				1	5	
Spring 2005	HSCI	100	General Health Science	31	25	0.20	3.10	93	465	1	40	
		130	Human Sexuality	229	204	1.20	23.22	697	580	6	240	
		484	Medical Terminology	32	25	0.20	3.20	96	480	1	30	
		690	Special Projects	1	1	0.00	0.07	2	#INF	1	5	
	ZJ	CRER	665	Anxiety Management	25	23	0.03	0.24	7	220	1	30
		HSCI	665	Anxiety Management	10	10	0.02	0.12	4	219	1	30
	ZK	CRER	665	Coping With Depression	28	24	0.03	0.23	7	206	1	30
		HSCI	665	Coping with Depression	11	11	0.02	0.15	5	274	1	30
Spring 2006	HSCI	100	General Health Science	26	19	0.20	2.60	78	390	1	35	
		130	Human Sexuality	194	173	1.00	19.91	597	597	5	185	
		484	Medical Terminology	32	31	0.20	3.52	106	528	1	30	
		690	EMT Individual Skills	1	1	0.00	0.10	3	#INF	1	5	
				Special Projects	0	0	0.00				1	5
		879	Hospital Unit Asst. Training	20	20	0.13	25.85	776	5,818	1	0	
Spring 2007	HSCI	100	General Health Science	35	23	0.20	3.50	105	525	1	40	
		130	Human Sexuality	184	148	1.00	18.64	559	559	5	200	
		690	Special Projects	1	1	0.00	0.07	2	#INF	1	5	
	TT	HSCI	484	Medical Terminology	22	18	0.10	2.20	66	660	1	60
	ZX	HSCI	665SC	Anger Management	2	2	0.02	0.03	1	55	1	40
	ZY	HSCI	665SF	Coping with Depression	10	10	0.02	0.15	5	274	1	40
	ZZ	HSCI	665SE	Anxiety Management	5	5	0.02	0.08	2	137	1	40
	Spring 2008	HSCI	100	General Health Science	71	60	0.40	7.10	213	533	2	80
130			Human Sexuality	228	194	1.00	23.18	695	695	5	195	
690			Special Projects	1	1	0.00	0.07	2	#INF	1	10	
TT		HSCI	484	Medical Terminology	31	26	0.10	3.10	93	930	1	30

				Health Sciences Department 2003/04 to 2007/08							
				Census Headcount	End of Term Headcount	FTEF	FTES	WSCH	Load	Sections	Max Enrc
Summer 2003	HSCI	100	General Health Science	55	41	0.20	5.57	167	836	1	55
		435	Pharmacy Technician Training	30	27	0.00	12.79	384	#INF	1	30
Summer 2004	HSCI	100	General Health Science	47	40	0.20	4.76	143	714	1	50
		130	Human Sexuality	42	39	0.20	4.23	127	635	1	40
		879	Hospital Unit Asst. Training	9	9	0.00	3.74	112	#INF	1	10
Summer 2005	HSCI	100	General Health Science	62	47	0.20	6.28	188	942	1	55
		130	Human Sexuality	35	31	0.20	3.53	106	529	1	35
Summer 2006	HSCI	100	General Health Science	33	24	0.20	3.11	93	466	1	35
		130	Human Sexuality	53	42	0.40	5.39	162	404	2	85
Summer 2007	HSCI	100	General Health Education	29	25	0.20	2.73	82	409	1	35
		130	Human Sexuality	57	46	0.40	5.36	161	402	2	75

Source: SMCCCD Data Warehouse

*Note: Report includes the following crosslisted courses: BUS 485, CRER 665. Courses are sorted by crosslist group code.

Census Headcount: Number of duplicated headcount at final census.

End of Term Headcount: Number of duplicated headcount at the end of the term.

FTEF: Total number of full time equivalent faculty assigned.

FTES: Total number of full time equivalent students enrolled at first census.

WSCH: Weekly student contact hours generated by census enrollments.

Load: The ratio of WSCH to FTEF, used to measure productivity.

Sections: Total number of sections offered per semester.

Max Enroll: The enrollment capacity or maximum enrollment as defined in curriculum.

