

## Department Success and Retention

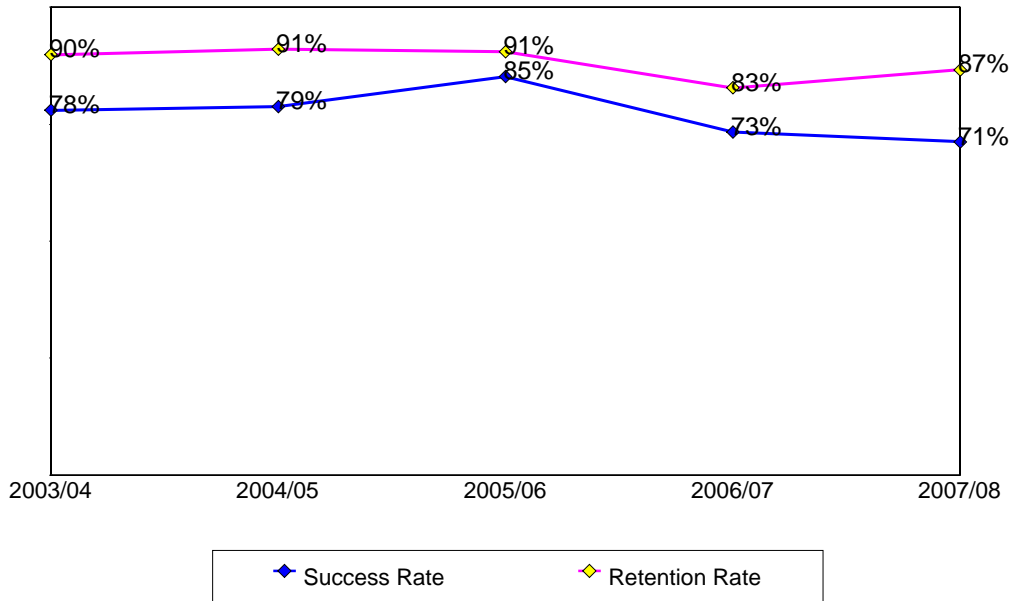
This report contains success and retention rates by various demographic segments and by course. Annual data are an aggregate of the fall and spring semesters. The following parameters have been applied:

- Success Counts: Number of students with A,B,C,CR grades.
- Success Rate: The percentage of students who complete a course with a grade of A,B,C,CR out of total enrollments.
- Retention Counts: Number of students with A,B,C,D,F,CR,NC, I grades.
- Retention Rate: The percentage of students who complete a course with a grade of A,B,C,D,F,CR,NC, I out of total headcount.

### Annual Success and Retention

	Headcount	Success Count	Success Rate	Retention Count	Retention Rate
2003/04	741	578	78%	666	90%
2004/05	570	449	79%	519	91%
2005/06	548	467	85%	496	91%
2006/07	529	388	73%	438	83%
2007/08	577	411	71%	500	87%
Change from 2006/07 to 2007/08	48	23	-2%	62	4%
<b>Totals &amp; Averages</b>	<b>2,965</b>	<b>2,293</b>	<b>77%</b>	<b>2,619</b>	<b>88%</b>

Annual (Fall/Spring) Success and Retention Rates



Source: SMCCCD Data Warehouse

**Success and Retention By Term**

	<b>Headcount</b>	<b>Success Count</b>	<b>Success Rate</b>	<b>Retention Count</b>	<b>Retention Rate</b>
Fall 2003	397	309	<b>78%</b>	353	<b>89%</b>
Fall 2004	264	215	<b>81%</b>	245	<b>93%</b>
Fall 2005	280	238	<b>85%</b>	252	<b>90%</b>
Fall 2006	274	211	<b>77%</b>	231	<b>84%</b>
Fall 2007	251	178	<b>71%</b>	219	<b>87%</b>
Spring 2004	344	269	<b>78%</b>	313	<b>91%</b>
Spring 2005	306	234	<b>76%</b>	274	<b>90%</b>
Spring 2006	268	229	<b>85%</b>	244	<b>91%</b>
Spring 2007	255	177	<b>69%</b>	207	<b>81%</b>
Spring 2008	326	233	<b>71%</b>	281	<b>86%</b>
<b>Totals &amp; Averages</b>	<b>2,965</b>	<b>2,293</b>	<b>77%</b>	<b>2,619</b>	<b>88%</b>

**Grade Distribution**

	<b>A</b>		<b>B</b>		<b>C</b>		<b>D</b>		<b>F</b>		<b>CR</b>		<b>NC</b>		<b>W</b>	
Fall 2003	164	41%	50	13%	42	11%	7	2%	23	6%	53	13%	14	4%	44	11%
Fall 2004	88	33%	82	31%	42	16%	12	4%	18	7%					19	8%
Fall 2005	105	36%	85	31%	47	17%	9	3%	5	2%					28	11%
Fall 2006	77	28%	70	25%	62	23%	6	2%	13	5%	1	0%			43	16%
Fall 2007	56	21%	63	27%	58	25%	23	9%	18	7%					32	11%
Spring 2004	133	40%	104	28%	32	10%	8	2%	36	10%					31	10%
Spring 2005	112	36%	81	27%	38	12%	11	4%	26	9%			3	1%	32	10%
Spring 2006	109	40%	77	29%	22	9%	8	3%	7	3%	20	8%			24	9%
Spring 2007	58	21%	74	31%	41	17%	21	8%	9	4%					48	20%
Spring 2008	69	20%	94	28%	70	22%	21	7%	27	9%					45	15%

Source: SMCCCD Data Warehouse

**Success and Retention by Ethnicity**

		<b>Headcount</b>	<b>Success Count</b>	<b>Success Rate</b>	<b>Retention Count</b>	<b>Retention Rate</b>
2003/04	African American	35	21	<b>60%</b>	30	<b>86%</b>
	Asian	200	164	<b>82%</b>	179	<b>90%</b>
	Filipino	205	162	<b>79%</b>	183	<b>89%</b>
	Hispanic	123	88	<b>72%</b>	110	<b>89%</b>
	Native American	3	2	<b>67%</b>	3	<b>100%</b>
	Other	23	19	<b>83%</b>	23	<b>100%</b>
	White	136	111	<b>82%</b>	124	<b>91%</b>
	Unreported	16	11	<b>69%</b>	14	<b>88%</b>
	<b>Totals &amp; Averages</b>	<b>741</b>	<b>578</b>	<b>78%</b>	<b>666</b>	<b>90%</b>
2004/05	African American	29	17	<b>59%</b>	25	<b>86%</b>
	Asian	141	117	<b>83%</b>	129	<b>91%</b>
	Filipino	107	94	<b>88%</b>	98	<b>92%</b>
	Hispanic	119	84	<b>71%</b>	107	<b>90%</b>
	Native American	4	3	<b>75%</b>	4	<b>100%</b>
	Other	14	13	<b>93%</b>	14	<b>100%</b>
	White	121	98	<b>81%</b>	110	<b>91%</b>
	Unreported	35	23	<b>66%</b>	32	<b>91%</b>
	<b>Totals &amp; Averages</b>	<b>570</b>	<b>449</b>	<b>79%</b>	<b>519</b>	<b>91%</b>
2005/06	African American	27	22	<b>81%</b>	23	<b>85%</b>
	Asian	122	113	<b>93%</b>	117	<b>96%</b>
	Filipino	116	101	<b>87%</b>	107	<b>92%</b>
	Hispanic	108	85	<b>79%</b>	95	<b>88%</b>
	Native American	1	1	<b>100%</b>	1	<b>100%</b>
	Other	17	15	<b>88%</b>	16	<b>94%</b>
	White	117	100	<b>85%</b>	105	<b>90%</b>
	Unreported	40	30	<b>75%</b>	32	<b>80%</b>
	<b>Totals &amp; Averages</b>	<b>548</b>	<b>467</b>	<b>85%</b>	<b>496</b>	<b>91%</b>
2006/07	African American	19	12	<b>63%</b>	13	<b>68%</b>
	Asian	110	81	<b>74%</b>	90	<b>82%</b>
	Filipino	127	89	<b>70%</b>	103	<b>81%</b>
	Hispanic	113	85	<b>75%</b>	94	<b>83%</b>
	Native American	3	2	<b>67%</b>	2	<b>67%</b>
	Other	17	11	<b>65%</b>	14	<b>82%</b>
	White	107	86	<b>80%</b>	93	<b>87%</b>
	Unreported	33	22	<b>67%</b>	29	<b>88%</b>
	<b>Totals &amp; Averages</b>	<b>529</b>	<b>388</b>	<b>73%</b>	<b>438</b>	<b>83%</b>
2007/08	African American	19	12	<b>63%</b>	16	<b>84%</b>
	Asian	115	83	<b>72%</b>	99	<b>86%</b>
	Filipino	144	99	<b>69%</b>	125	<b>87%</b>
	Hispanic	125	86	<b>69%</b>	108	<b>86%</b>
	Native American	5	1	<b>20%</b>	4	<b>80%</b>
	Other	20	19	<b>95%</b>	20	<b>100%</b>
	White	117	91	<b>78%</b>	103	<b>88%</b>
	Unreported	32	20	<b>63%</b>	25	<b>78%</b>
	<b>Totals &amp; Averages</b>	<b>577</b>	<b>411</b>	<b>71%</b>	<b>500</b>	<b>87%</b>

Source: SMCCCD Data Warehouse

**Success and Retention by Gender**

		Headcount	Success Count	Success Rate	Retention Count	Retention Rate
2003/04	Female	360	280	78%	322	89%
	Male	377	295	78%	341	90%
	Unreported	2	1	50%	1	50%
	<b>Totals &amp; Averages</b>	739	576	78%	664	90%
2004/05	Female	285	232	81%	259	91%
	Male	278	210	76%	253	91%
	Unreported	4	4	100%	4	100%
	<b>Totals &amp; Averages</b>	567	446	79%	516	91%
2005/06	Female	301	261	87%	277	92%
	Male	235	195	83%	207	88%
	Unreported	6	6	100%	6	100%
	<b>Totals &amp; Averages</b>	542	462	85%	490	90%
2006/07	Female	272	209	77%	228	84%
	Male	249	173	69%	203	82%
	Unreported	2	1	50%	1	50%
	<b>Totals &amp; Averages</b>	523	383	73%	432	83%
2007/08	Female	287	194	68%	246	86%
	Male	284	214	75%	250	88%
	Unreported	6	3	50%	4	67%
	<b>Totals &amp; Averages</b>	577	411	71%	500	87%

**Success and Retention by Day/Evening Status**

		Headcount	Success Count	Success Rate	Retention Count	Retention Rate
2003/04	Day	610	468	77%	541	89%
	Evening	131	110	84%	125	95%
2004/05	Day	421	332	79%	383	91%
	Evening	149	117	79%	136	91%
2005/06	Day	382	319	84%	340	89%
	Evening	166	148	89%	156	94%
2006/07	Day	390	279	72%	316	81%
	Evening	139	109	78%	122	88%
2007/08	Day	414	285	69%	355	86%
	Evening	163	126	77%	145	89%

Source: SMCCCD Data Warehouse

**Success and Retention by Age**

		<b>Headcount</b>	<b>Success Count</b>	<b>Success Rate</b>	<b>Retention Count</b>	<b>Retention Rate</b>
2003/04	Under 18	6	5	<b>83%</b>	6	<b>100%</b>
	Age 18-22	586	458	<b>78%</b>	527	<b>90%</b>
	Age 23-28	97	74	<b>76%</b>	85	<b>88%</b>
	Age 29-39	32	24	<b>75%</b>	28	<b>88%</b>
	Age 40-49	9	9	<b>100%</b>	9	<b>100%</b>
	Age 50-59	10	8	<b>80%</b>	10	<b>100%</b>
	Age 60+	1			1	<b>100%</b>
	<b>Totals &amp; Averages</b>	<b>741</b>	<b>578</b>	<b>78%</b>	<b>666</b>	<b>90%</b>
2004/05	Under 18	8	6	<b>75%</b>	7	<b>88%</b>
	Age 18-22	448	343	<b>77%</b>	405	<b>90%</b>
	Age 23-28	77	66	<b>86%</b>	71	<b>92%</b>
	Age 29-39	25	23	<b>92%</b>	25	<b>100%</b>
	Age 40-49	4	4	<b>100%</b>	4	<b>100%</b>
	Age 50-59	7	6	<b>86%</b>	6	<b>86%</b>
	Age 60+	1	1	<b>100%</b>	1	<b>100%</b>
	<b>Totals &amp; Averages</b>	<b>570</b>	<b>449</b>	<b>79%</b>	<b>519</b>	<b>91%</b>
2005/06	Under 18	9	7	<b>78%</b>	9	<b>100%</b>
	Age 18-22	388	323	<b>83%</b>	346	<b>89%</b>
	Age 23-28	93	83	<b>89%</b>	86	<b>92%</b>
	Age 29-39	29	28	<b>97%</b>	28	<b>97%</b>
	Age 40-49	17	16	<b>94%</b>	16	<b>94%</b>
	Age 50-59	11	10	<b>91%</b>	10	<b>91%</b>
	Age 60+	1			1	<b>100%</b>
	<b>Totals &amp; Averages</b>	<b>548</b>	<b>467</b>	<b>85%</b>	<b>496</b>	<b>91%</b>
2006/07	Under 18	10	8	<b>80%</b>	9	<b>90%</b>
	Age 18-22	393	284	<b>72%</b>	326	<b>83%</b>
	Age 23-28	82	57	<b>70%</b>	62	<b>76%</b>
	Age 29-39	26	22	<b>85%</b>	23	<b>88%</b>
	Age 40-49	12	11	<b>92%</b>	12	<b>100%</b>
	Age 50-59	6	6	<b>100%</b>	6	<b>100%</b>
		<b>Totals &amp; Averages</b>	<b>529</b>	<b>388</b>	<b>73%</b>	<b>438</b>
2007/08	Under 18	5	5	<b>100%</b>	5	<b>100%</b>
	Age 18-22	432	311	<b>72%</b>	383	<b>89%</b>
	Age 23-28	104	69	<b>66%</b>	85	<b>82%</b>
	Age 29-39	30	20	<b>67%</b>	21	<b>70%</b>
	Age 40-49	5	5	<b>100%</b>	5	<b>100%</b>
	Age 50-59	1	1	<b>100%</b>	1	<b>100%</b>
		<b>Totals &amp; Averages</b>	<b>577</b>	<b>411</b>	<b>71%</b>	<b>500</b>

Source: SMCCCD Data Warehouse

**Success and Retention by Enrollment Status**

		<b>Headcount</b>	<b>Success Count</b>	<b>Success Rate</b>	<b>Retention Count</b>	<b>Retention Rate</b>
2003/04	Continuing Student	534	422	<b>79%</b>	477	<b>89%</b>
	Currently K-12	1	1	<b>100%</b>	1	<b>100%</b>
	First-Time Student	73	57	<b>78%</b>	71	<b>97%</b>
	First-Time Transfer Student	58	49	<b>84%</b>	54	<b>93%</b>
	Returning Student	58	37	<b>64%</b>	49	<b>84%</b>
	Returning Transfer Student	17	12	<b>71%</b>	14	<b>82%</b>
2004/05	Continuing Student	444	356	<b>80%</b>	408	<b>92%</b>
	Currently K-12	1				
	First-Time Student	41	26	<b>63%</b>	35	<b>85%</b>
	First-Time Transfer Student	34	29	<b>85%</b>	32	<b>94%</b>
	Returning Student	35	25	<b>71%</b>	30	<b>86%</b>
	Returning Transfer Student	15	13	<b>87%</b>	14	<b>93%</b>
2005/06	Continuing Student	397	337	<b>85%</b>	355	<b>89%</b>
	Currently K-12	1			1	<b>100%</b>
	First-Time Student	55	47	<b>85%</b>	51	<b>93%</b>
	First-Time Transfer Student	49	44	<b>90%</b>	47	<b>96%</b>
	Returning Student	26	22	<b>85%</b>	23	<b>88%</b>
	Returning Transfer Student	20	17	<b>85%</b>	19	<b>95%</b>
2006/07	Continuing Student	399	296	<b>74%</b>	334	<b>84%</b>
	Currently K-12	3	3	<b>100%</b>	3	<b>100%</b>
	First-Time Student	49	36	<b>73%</b>	40	<b>82%</b>
	First-Time Transfer Student	29	21	<b>72%</b>	22	<b>76%</b>
	Returning Student	33	19	<b>58%</b>	24	<b>73%</b>
	Returning Transfer Student	16	13	<b>81%</b>	15	<b>94%</b>
2007/08	Continuing Student	470	337	<b>72%</b>	409	<b>87%</b>
	Currently K-12	7	5	<b>71%</b>	7	<b>100%</b>
	First-Time Student	23	16	<b>70%</b>	19	<b>83%</b>
	First-Time Transfer Student	32	26	<b>81%</b>	30	<b>94%</b>
	Returning Student	26	17	<b>65%</b>	22	<b>85%</b>
	Returning Transfer Student	19	10	<b>53%</b>	13	<b>68%</b>

Source: SMCCD Data Warehouse

## Department Awards Conferred

### Awards by Type

	2003/04	2004/05	2005/06	2006/07	2007/08	Total
Associate Degree	4	7	18	41	40	110
<b>Total</b>	<b>4</b>	<b>7</b>	<b>18</b>	<b>41</b>	<b>40</b>	<b>110</b>

### Awards by Gender

	2003/04	2004/05	2005/06	2006/07	2007/08	Total
Female	3	5	15	33	31	87
Male	1	2	1	7	9	20
Unreported			2	1		3

### Awards by Ethnicity

	2003/04	2004/05	2005/06	2006/07	2007/08	Total
Asian	1	2	2	6	10	21
Filipino	2	3	9	25	17	56
Hispanic	1			3	5	9
Native American				1		1
Pacific Islander				2	1	3
White		2	6	2	6	16
Other				2	1	3
Unreported			1			1
	2003/04	2004/05	2005/06	2006/07	2007/08	Total
18-22	2	2	9	13	19	45
23-28	2	3	5	9	12	31
29-39		1	2	13	6	22
40-49		1	2	6	3	12

Source: SMCCCD Data Warehouse