

Department Productivity: By Year and By Term

	Census Headcount	End of Term Headcount	FTEF	FTES	WSCH	Load	Sections	Max Enroll
2003/04	866	714	6.77	130.61	3,918	579	37	1,157
2004/05	851	683	7.20	125.71	3,771	524	39	1,235
2005/06	1,105	843	10.00	162.40	4,872	487	48	1,612
2006/07	1,146	854	9.51	169.34	5,080	534	44	1,587
2007/08	1,071	796	8.49	163.73	4,912	578	46	1,347

	Census Headcount	End of Term Headcount	FTEF	FTES	WSCH	Load	Sections	Max Enroll
Fall 2003	323	273	2.80	50.61	1,518	542	17	482
Fall 2004	317	269	2.60	50.61	1,518	584	13	430
Fall 2005	457	346	3.93	70.66	2,120	539	18	642
Fall 2006	477	352	3.73	75.74	2,272	609	17	617
Fall 2007	447	332	3.43	72.05	2,162	631	19	536
Spring 2004	416	345	3.23	62.24	1,867	577	17	560
Spring 2005	428	337	3.87	59.92	1,798	465	23	690
Spring 2006	455	349	4.73	66.26	1,988	420	24	745
Spring 2007	436	331	3.84	63.79	1,914	498	18	635
Spring 2008	409	300	3.33	64.25	1,928	578	19	516
Summer 2003	127	96	0.73	17.75	533	726	3	115
Summer 2004	106	77	0.73	15.18	455	621	3	115
Summer 2005	193	148	1.33	25.48	764	573	6	225
Summer 2006	233	171	1.93	29.81	894	463	9	335
Summer 2007	215	164	1.73	27.43	823	475	8	295

Source: SMCCCD Data Warehouse

*Note: Crosslisted courses have been combined to calculate a single fill rate.

Census Headcount: Number of duplicated headcount at final census.

End of Term Headcount: Number of duplicated headcount at the end of the term.

FTEF: Total number of full time equivalent faculty assigned.

FTES: Total number of full time equivalent students enrolled at first census.

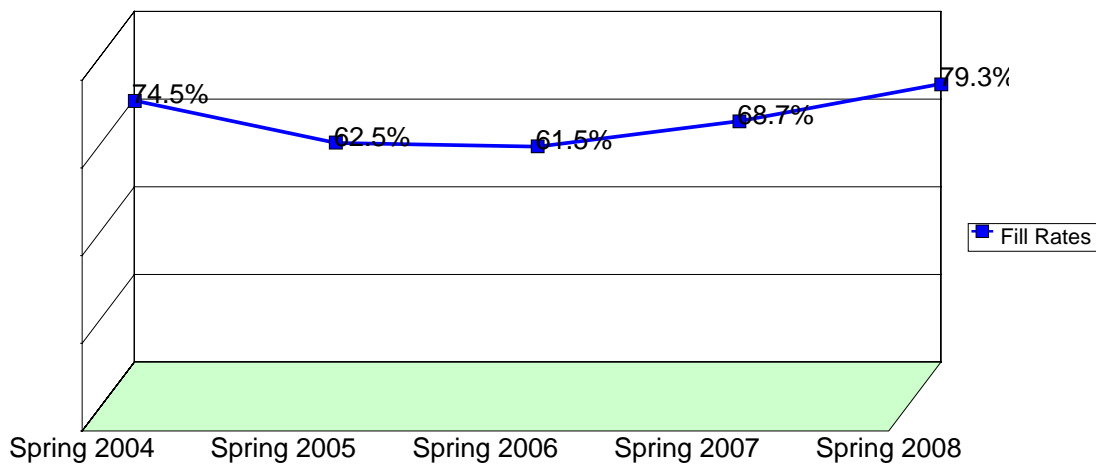
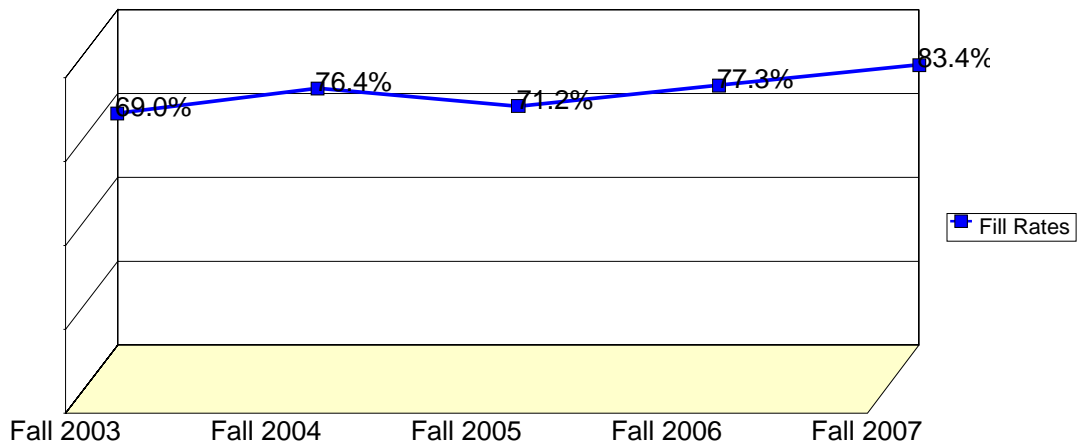
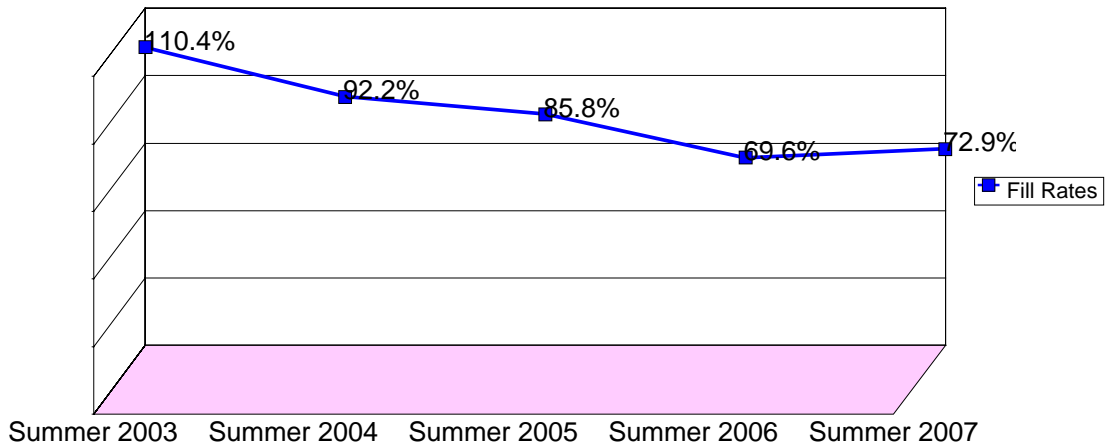
WSCH: Weekly student contact hours generated by census enrollments.

Load: The ratio of WSCH to FTEF, used to measure productivity.

Sections: Total number of sections offered per semester.

Max Enroll: The enrollment capacity or maximum enrollment as defined in curriculum.

Department Fill Rates by Term



Source: SMCCCD Data Warehouse

*Note: Crosslisted courses have been combined to calculate a single fill rate.

Fill Rates: The percent a class fills/enrolls based on capacity or enrollment maximum defined in the curriculum (does not include positive attendance or open entry/open exit classes).

Department Productivity: Term by Course

Foreign Language Department
2003/04 to 2007/08

				Census Headcount	End of Term Headcount	FTEF	FTES	WSCH	Load	Sections	Max Enroll
Fall 2003	ARBC	111	Elementary Arabic I	39	36	0.20	5.59	168	838	2	70
		112	Elementary Arabic II	11	8	0.20	1.51	45	227	2	20
	ASL	111	American Sign Language I	48	35	0.20	6.40	192	960	1	40
		112	American Sign Language II	19	17	0.20	2.72	82	409	1	40
	SPAN	110	Elementary Spanish	48	44	0.33	9.60	288	864	1	60
		111	Elementary Spanish I	35	24	0.20	5.02	151	753	1	40
		112	Elementary Spanish II	24	20	0.20	3.44	103	516	1	35
		120	Adv. Elementary Spanish	23	20	0.33	4.60	138	414	1	35
		121	Adv. Elementary Spanish I	12	11	0.10	1.72	52	516	1	35
		122	Advanced Elementary Spanish II	2	2	0.10	0.29	9	86	1	10
		130	Intermediate Spanish - Honors	4	4	0.00	0.40	12	#INF	1	0
		140	Advanced Intermediate Spanish	1	1	0.20	0.10	3	15	1	2
		220	Spanish for Spanish Speakers I	20	16	0.33	4.00	120	360	1	40
		690	Special Projects	1	1	0.00	0.07	2	#INF	1	15
TAGA	111	Elementary Tagalog I	36	34	0.20	5.16	155	774	1	40	
Fall 2004	ARBC	111	Elementary Arabic I	31	29	0.20	4.44	133	667	1	35
		112	Elementary Arabic II	15	12	0.20	2.15	65	323	1	35
	ASL	111	American Sign Language I	71	58	0.40	9.83	295	737	2	80
	SPAN	110	Elementary Spanish	39	32	0.33	7.80	234	702	1	50
		111	Elementary Spanish I	38	30	0.20	5.45	163	817	1	40
		112	Elementary Spanish II	18	16	0.20	2.58	77	387	1	35
		120	Adv. Elementary Spanish	25	22	0.33	5.08	153	458	1	35
		121	Adv. Elementary Spanish I	7	6	0.20	1.00	30	151	1	35
	690	Special Projects	0	0	0.00				1	15	
	TAGA	111	Elementary Tagalog I	41	37	0.20	5.88	176	882	1	40
YE SPAN	110	Elementary Spanish	19	16	0.17	3.80	114	684	1	30	
		Elementary Spanish -Honors	13	11	0.17	2.60	78	468	1	30	
Fall 2005	ARBC	111	Elementary Arabic I	18	11	0.20	2.58	77	387	1	35
		112	Elementary Arabic II	24	19	0.20	3.44	103	516	1	35
		801	Conversational Arabic I, Elem	21	14	0.20	3.01	90	451	1	35
	ASL	111	American Sign Language I	82	68	0.40	11.34	340	851	2	80
		112	American Sign Language II	24	18	0.20	3.44	103	516	1	40
	CHIN	111	Elementary Chinese I	34	28	0.20	4.87	146	731	1	40
	ITAL	111	Italian I	39	23	0.20	5.59	168	839	1	43
	SPAN	110	Elementary Spanish	45	39	0.67	9.00	270	405	2	69
		111	Elementary Spanish I	31	26	0.20	4.44	133	667	1	40
		112	Elementary Spanish II	20	16	0.20	2.87	86	430	1	35
		120	Adv. Elementary Spanish	20	20	0.33	4.07	122	366	1	35
		121	Adv. Elementary Spanish I	10	6	0.20	1.43	43	215	1	35
	TAGA	111	Elementary Tagalog I	36	26	0.20	5.16	155	774	1	40
		112	Elementary Tagalog II	21	14	0.20	3.01	90	451	1	40
YE SPAN	110	Elementary Spanish	30	17	0.17	6.00	180	1,080	1	40	
		Elementary Spanish -Honors	2	1	0.17	0.40	12	72	1	40	
Fall 2006	ARBC	111	Elementary Arabic I	18	12	0.20	2.70	81	405	1	35
	ASL	111	American Sign Language I	78	57	0.40	11.29	339	847	2	80
		112	American Sign Language II	16	16	0.20	2.40	72	360	1	40
	CHIN	111	Elementary Chinese I	102	70	0.60	14.34	430	717	3	119

			Census Headcount	End of Term Headcount	FTEF	FTES	WSCH	Load	Sections	Max Enroll		
	ITAL	111	Italian I	27	18	0.20	4.05	122	608	1	43	
	SPAN	110	Elementary Spanish	45	33	0.67	9.30	279	419	2	80	
		111	Elementary Spanish I	36	28	0.20	5.40	162	810	1	40	
		112	Elementary Spanish II	19	15	0.20	2.85	86	428	1	35	
		120	Adv. Elementary Spanish	17	15	0.33	3.57	107	321	1	35	
	TAGA	111	Elementary Tagalog I	75	47	0.40	10.75	323	806	2	70	
	YE SPAN	110	Elementary Spanish	32	30	0.17	6.61	198	1,190	1	40	
				Elementary Spanish -Honors	12	11	0.17	2.48	74	446	1	40
Fall 2007	ARBC	111	Elementary Arabic I	28	22	0.20	4.20	126	630	1	35	
	ASL	111	American Sign Language I	69	51	0.40	9.96	299	747	2	80	
		112	American Sign Language II	23	22	0.20	3.45	104	518	1	40	
	CHIN	111	Elementary Chinese I	73	59	0.40	10.61	318	796	2	46	
	SPAN	110	Elementary Spanish	28	24	0.33	5.79	174	521	1	40	
		111	Elementary Spanish I	35	18	0.20	5.25	158	788	1	40	
		112	Elementary Spanish II	15	12	0.20	2.25	68	338	1	35	
		801	Conversational Spanish I	17	10	0.20	1.87	56	281	1	40	
	TAGA	111	Elementary Tagalog I	62	40	0.40	9.05	272	679	2	70	
	YE SPAN	110	Elementary Spanish	35	26	0.17	7.23	217	1,302	1	40	
				Elementary Spanish -Honors	11	10	0.17	2.27	68	409	1	40
	YG SPAN	120	Adv. Elementary Spanish	21	17	0.12	4.41	132	1,103	1	35	
			Advanced Elem. Spanish - Honor	9	5	0.12	1.89	57	473	1	35	
			Advanced Elementary Spanish	4	3	0.12	0.84	25	210	1	35	
	YI SPAN	130	Intermediate Spanish	6	5	0.20	1.44	43	216	1	35	
			Intermediate Spanish - Honors	11	8	0.00	1.54	46	#INF	1	35	
	Spring 2004	ARBC	111	Elementary Arabic I	26	19	0.20	3.47	104	520	1	35
			112	Elementary Arabic II	14	9	0.20	1.87	56	280	1	35
			121	Advanced Elementary Arabic I	17	16	0.20	1.70	51	255	1	35
		ASL	111	American Sign Language I	69	56	0.40	9.56	287	717	2	70
112			American Sign Language II	12	10	0.20	1.60	48	240	1	35	
CHIN		111	Elementary Chinese I	26	24	0.20	3.47	104	520	1	35	
SPAN		110	Elementary Spanish	40	35	0.33	8.00	240	720	1	40	
		111	Elementary Spanish I	41	36	0.20	5.88	176	882	1	40	
		112	Elementary Spanish II	27	23	0.20	3.60	108	540	1	40	
		120	Advanced Elementary Spanish I	34	30	0.33	6.91	207	622	1	35	
		690	Special Projects	6	5	0.00	0.43	13	#INF	1	10	
TAGA		111	Elementary Tagalog I	36	32	0.20	4.80	144	720	1	40	
		112	Elementary Tagalog II	15	14	0.20	2.00	60	300	1	40	
YC SPAN		121	Advanced Elementary Spanish I	19	13	0.10	2.72	82	817	1	30	
		122	Advanced Elementary Spanish II	10	9	0.10	1.43	43	430	1	30	
YL SPAN		110	Elementary Spanish -Honors	24	14	0.17	4.80	144	864	1	40	
Spring 2005		ARBC	111	Elementary Arabic I	25	16	0.20	3.33	100	500	1	35
			801	Standard Spoken Arabic I	13	12	0.13	0.89	27	201	1	35
		ASL	111	American Sign Language I	57	41	0.40	7.90	237	593	2	70
			112	American Sign Language II	16	12	0.20	2.13	64	320	1	35
	CHIN	111	Elementary Chinese I	38	30	0.20	5.07	152	760	1	35	
	ITAL	111	Elementary Italian I	16	6	0.20	1.71	51	256	1	30	
	SPAN	110	Elementary Spanish	48	38	0.67	9.60	288	432	2	80	
		111	Elementary Spanish I	35	32	0.20	5.02	151	753	1	40	

			Census Headcount	End of Term Headcount	FTEF	FTES	WSCH	Load	Sections	Max Enroll		
		112	Elementary Spanish II	19	14	0.20	2.44	73	366	2	60	
		130	Intermediate Spanish	22	22	0.20	2.20	66	330	1	35	
		690	Special Projects	3	2	0.00	0.15	5	#INF	1	10	
		801	Conversational Spanish I	18	15	0.13	1.80	54	405	1	35	
	TAGA	111	Elementary Tagalog I	35	25	0.20	4.67	140	700	1	40	
		112	Elementary Tagalog II	15	14	0.20	2.00	60	300	1	40	
	YC SPAN	121	Adv. Elementary Spanish I	10	6	0.10	1.43	43	430	1	30	
		122	Advanced Elementary Spanish II	15	14	0.10	2.15	65	645	1	30	
	YL SPAN	120	Adv. Elementary Spanish	19	18	0.17	3.86	116	695	1	40	
			Elementary Spanish -Honors	9	8	0.17	1.83	55	329	1	40	
	YO ARBC	112	Elementary Arabic II	7	5	0.10	0.93	28	280	1	40	
		121	Advanced Elementary Arabic I	8	7	0.10	0.80	24	240	1	40	
Spring 2006	ARBC	111	Elementary Arabic I	21	12	0.20	2.80	84	420	1	35	
		801	Standard Spoken Arabic I	14	5	0.20	1.40	42	210	1	35	
	ASL	111	American Sign Language I	69	53	0.40	9.52	286	714	2	70	
		112	American Sign Language II	13	13	0.20	1.73	52	260	1	35	
		121	Adv. Elem. Amer Sign Lang I	10	8	0.20	1.00	30	150	1	35	
	CHIN	112	Elementary Chinese II	23	18	0.20	3.07	92	460	1	35	
	ITAL	112	Elementary Italian II	20	14	0.20	2.67	80	400	1	35	
	SPAN	110	Elementary Spanish	59	41	0.67	11.80	354	531	2	80	
		111	Elementary Spanish I	23	22	0.20	3.30	99	495	1	40	
		112	Elementary Spanish II	21	19	0.20	3.01	90	451	1	40	
		120	Advanced Elementary Spanish	10	6	0.33	1.67	50	150	1	35	
		130	Intermediate Spanish	21	19	0.20	2.80	84	420	1	35	
		690	Special Projects	3	3	0.00	0.23	7	#INF	1	10	
		801	Conversational Spanish I	13	5	0.20	1.30	39	195	1	35	
		TAGA	111	Elementary Tagalog I	38	33	0.20	5.07	152	760	1	40
			112	Elementary Tagalog II	21	17	0.20	2.80	84	420	1	40
	YC SPAN	121	Adv. Elementary Spanish I	12	5	0.10	1.72	52	516	1	30	
		122	Advanced Elementary Spanish II	11	10	0.10	1.58	47	473	1	30	
	YL SPAN	120	Adv. Elementary Spanish	15	12	0.17	3.05	92	549	1	40	
			Elementary Spanish -Honors	8	7	0.17	1.63	49	293	1	40	
	YO ARBC	112	Elementary Arabic II	13	12	0.20	1.86	56	280	1	40	
		121	Advanced Elementary Arabic I	17	15	0.20	2.27	68	340	1	40	
Spring 2007	ARBC	111	Elementary Arabic I	22	13	0.20	2.93	88	440	1	35	
		112	Elementary Arabic II	23	20	0.20	3.07	92	460	1	35	
	ASL	111	American Sign Language I	65	52	0.40	8.99	270	674	2	70	
		112	American Sign Language II	20	16	0.20	2.67	80	400	1	35	
	CHIN	112	Elementary Chinese II	50	35	0.44	6.83	205	464	2	70	
	SPAN	110	Elementary Spanish	57	42	0.67	11.40	342	513	2	85	
		111	Elementary Spanish I	60	40	0.40	8.27	248	620	2	80	
		112	Elementary Spanish II	15	15	0.20	2.15	65	323	1	40	
		130	Intermediate Spanish	22	17	0.20	2.20	66	330	1	35	
		801	Conversational Spanish I	27	22	0.20	2.97	89	446	1	35	
		TAGA	111	Elementary Tagalog I	42	32	0.40	5.60	168	420	2	80
		YL SPAN	120	Adv. Elementary Spanish	18	15	0.17	3.66	110	659	1	35

				Census Headcount	End of Term Headcount	FTEF	FTES	WSCH	Load	Sections	Max Enroll
			Elementary Spanish -Honors	15	12	0.17	3.05	92	549	1	35
Spring 2008	ARBC	111	Elementary Arabic I	31	21	0.20	4.34	130	651	1	35
		112	Elementary Arabic II	17	11	0.20	2.38	71	357	1	30
	ASL	111	American Sign Language I	74	58	0.40	10.73	322	805	2	70
		112	American Sign Language II	19	16	0.20	2.66	80	399	1	35
	CHIN	112	Elementary Chinese II	43	39	0.40	6.18	185	464	2	65
		121	Adv. Elem. Chinese I	12	7	0.20	1.68	50	252	1	30
	SPAN	110	Elementary Spanish	39	27	0.33	8.06	242	725	1	40
		111	Elementary Spanish I	44	38	0.20	6.60	198	990	1	40
		112	Elementary Spanish II	23	14	0.20	3.45	104	518	1	40
		801	Conversational Spanish I	24	9	0.13	2.40	72	540	1	30
	YG SPAN	110	Elementary Spanish	30	21	0.17	6.20	186	1,116	1	26
			Elementary Spanish - Honors	5	3	0.17	1.03	31	186	1	26
	YI SPAN	130	Intermediate Spanish	13	9	0.13	1.82	55	409	2	80
			Intermediate Spanish - Honors	9	7	0.07	1.26	38	567	1	40
YL SPAN	120	Adv. Elementary Spanish	19	13	0.17	3.99	120	718	1	35	
		Elementary Spanish -Honors	7	7	0.17	1.47	44	265	1	35	
Summer 2003	SPAN	110	Elementary Spanish	40	29	0.33	7.31	219	658	1	40
		111	Elementary Spanish I	46	35	0.20	5.52	166	828	1	40
	TAGA	111	Elementary Tagalog I	41	32	0.20	4.92	148	738	1	35
Summer 2004	SPAN	110	Elementary Spanish	32	23	0.33	6.01	180	541	1	40
		111	Elementary Spanish I	41	29	0.20	5.25	157	787	1	40
	TAGA	111	Elementary Tagalog I	33	25	0.20	3.92	118	588	1	35
Summer 2005	ARBC	111	Elementary Arabic I	24	17	0.20	2.85	86	428	1	40
	ASL	111	American Sign Language I	44	38	0.20	5.23	157	784	1	35
	SPAN	110	Elementary Spanish	33	25	0.33	6.20	186	558	1	40
		111	Elementary Spanish I	29	24	0.20	3.71	111	557	1	40
		112	Elementary Spanish II	22	14	0.20	2.61	78	392	1	35
	TAGA	111	Elementary Tagalog I	41	30	0.20	4.87	146	731	1	35
Summer 2006	ARBC	111	Elementary Arabic I	21	14	0.20	2.52	76	378	1	40
	ASL	111	American Sign Language I	52	47	0.40	6.07	182	455	2	70
		112	American Sign Language II	18	16	0.20	2.13	64	319	1	35
	SPAN	110	Elementary Spanish	28	19	0.33	5.44	163	490	1	40
		111	Elementary Spanish I	60	33	0.40	7.17	215	538	2	80
		112	Elementary Spanish II	19	11	0.20	2.28	68	342	1	35
	TAGA	111	Elementary Tagalog I	35	31	0.20	4.20	126	630	1	35
Summer 2007	ARBC	111	Elementary Arabic I	19	5	0.20	2.28	68	342	1	35
	ASL	111	American Sign Language I	66	60	0.40	7.64	229	573	2	70
		112	American Sign Language II	16	16	0.20	1.89	57	283	1	35
	SPAN	110	Elementary Spanish	25	24	0.33	5.01	150	451	1	40
		111	Elementary Spanish I	34	19	0.20	4.04	121	606	1	40
		112	Elementary Spanish II	23	15	0.20	2.76	83	414	1	40
	TAGA	111	Elementary Tagalog I	32	25	0.20	3.80	114	571	1	35

