

## Department Productivity: By Year and By Term

	Census Headcount	End of Term Headcount	FTEF	FTES	WSCH	Load	Sections	Max Enroll
2003/04	201	178	0.90	20.30	609	677	7	190
2004/05	166	147	0.90	16.30	489	543	8	210
2005/06	149	133	0.90	14.70	441	490	8	221
2006/07	160	136	0.90	16.12	484	537	8	221
2007/08	121	104	0.70	12.03	361	516	7	181

	Census Headcount	End of Term Headcount	FTEF	FTES	WSCH	Load	Sections	Max Enroll
Fall 2003	97	85	0.50	9.97	299	598	3	90
Fall 2004	82	74	0.50	8.03	241	482	4	110
Fall 2005	70	64	0.50	6.87	206	412	4	120
Fall 2006	77	66	0.50	7.85	236	471	4	120
Fall 2007	38	33	0.30	3.80	114	380	3	80
Spring 2004	104	93	0.40	10.33	310	775	4	100
Spring 2005	84	73	0.40	8.27	248	620	4	100
Spring 2006	79	69	0.40	7.83	235	588	4	101
Spring 2007	83	70	0.40	8.27	248	620	4	101
Spring 2008	83	71	0.40	8.23	247	618	4	101

Source: SMCCCD Data Warehouse

\*Note: Report includes the following crosslisted courses: FCS 113, FCS 119. Interdepartmental crosslisted courses are included in fill rate figures only. Crosslisted courses have been combined to calculate a single fill rate.

Census Headcount: Number of duplicated headcount at final census.

End of Term Headcount: Number of duplicated headcount at the end of the term.

FTEF: Total number of full time equivalent faculty assigned.

FTES: Total number of full time equivalent students enrolled at first census.

WSCH: Weekly student contact hours generated by census enrollments.

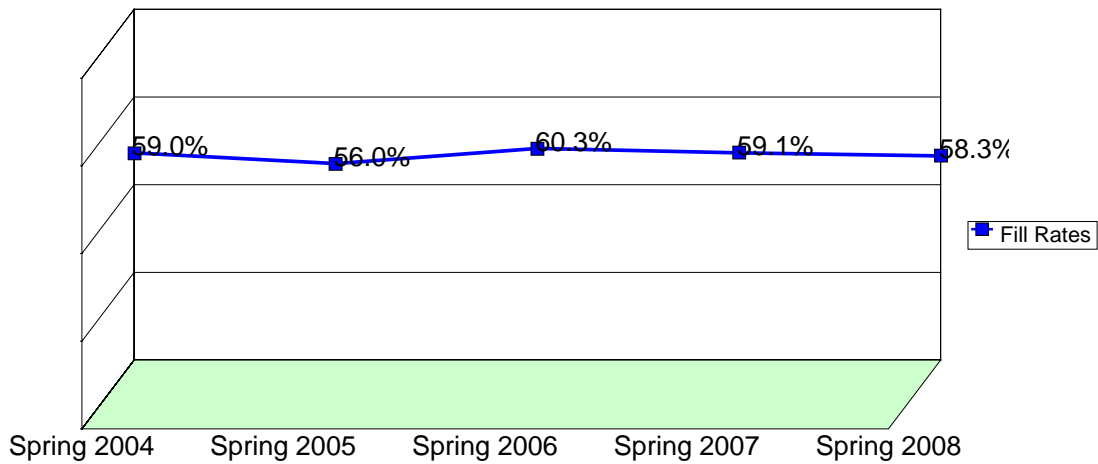
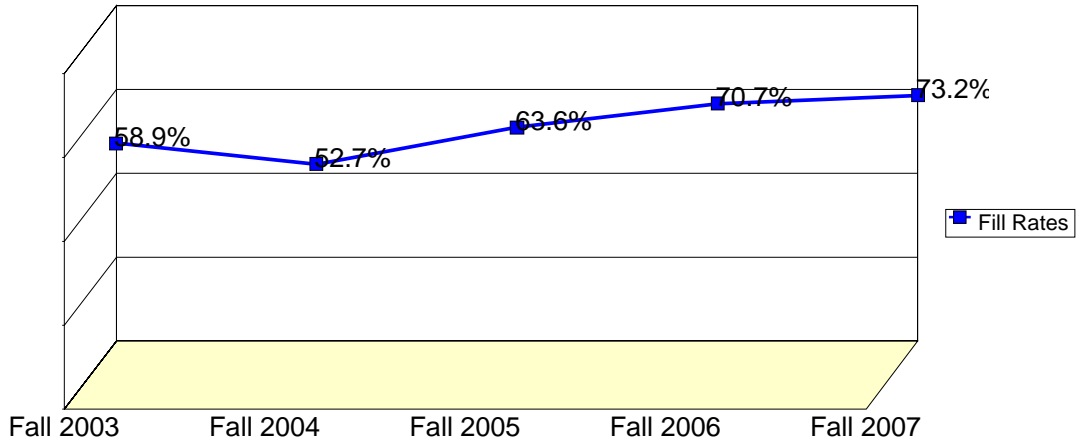
Load: The ratio of WSCH to FTEF, used to measure productivity.

Sections: Total number of sections offered per semester.

Max Enroll: The enrollment capacity or maximum enrollment as defined in curriculum.

include positive attendance or open entry/open exit classes).

## Department Fill Rates by Term



Source: SMCCCD Data Warehouse

\*Note: Report includes the following crosslisted courses: FCS 113, FCS 119. Crosslisted courses have been combined to calculate a single fill rate.

Fill Rates: The percent a class fills/enrolls based on capacity or enrollment maximum defined in the curriculum (does not include positive attendance or open entry/open exit classes).

## Department Productivity: Term by Course

				Census Headcount	End of Term Headcount	FTEF	FTES	WSCH	Load	Sections	Max Enroll	
<b>Fall 2003</b>	FASH	151	Fashion Merchandising	30	29	0.20	3.00	90	450	1	40	
	TG	FASH 117	Creating A Personal Image	27	17	0.20	2.97	89	446	1	30	
	TI	FASH 119	Clothing, Culture and Society	40	39	0.10	4.00	120	1,200	1	40	
		FCS 119	Clothing, Culture & Society	6	6	0.10	0.60	18	180	1	40	
<b>Fall 2004</b>	FASH	151	Fashion Merchandising	23	20	0.20	2.30	69	345	1	40	
		690	Special Projects	3	2	0.00	0.13	4	#INF	1	20	
	TG	FASH 117	Creating A Personal Image	17	16	0.20	1.70	51	255	1	30	
	TI	FASH 119	Clothing, Culture and Society	39	36	0.10	3.90	117	1,170	1	40	
		FCS 119	Clothing, Culture & Society	11	11	0.10	1.10	33	330	1	40	
		FASH 117	Creating A Personal Image	18	16	0.20	1.80	54	270	1	40	
<b>Fall 2005</b>		151	Fashion Merchandising	23	22	0.20	2.30	69	345	1	40	
		690	Special Projects	2	2	0.00	0.07	2	#INF	1	20	
	TI	FASH 119	Clothing, Culture and Society	27	24	0.10	2.70	81	810	1	40	
		FCS 119	Clothing, Culture and Society	16	15	0.10	1.60	48	480	1	40	
	<b>Fall 2006</b>	FASH	117	Creating A Personal Image	15	13	0.20	1.65	50	248	1	40
			151	Fashion Merchandising	30	22	0.20	3.00	90	450	1	40
		690	Special Projects	0	0	0.00				1	20	
TI		FASH 119	Clothing, Culture and Society	32	31	0.10	3.20	96	960	1	40	
		FCS 119	Clothing, Culture and Society	19	18	0.10	1.90	57	570	1	40	
<b>Fall 2007</b>		FASH	151	Fashion Merchandising	17	14	0.20	1.70	51	255	1	40
		690	Special Projects	0	0	0.00				1	20	
	TI	FASH 119	Clothing, Culture and Society	21	19	0.10	2.10	63	630	1	40	
		FCS 119	Clothing, Culture and Society	25	18	0.10	2.50	75	750	1	40	
	<b>Spring 2004</b>	FASH	151	Fashion Merchandising	30	23	0.20	3.00	90	450	1	40
			690	Special Projects	4	4	0.00	0.33	10	#INF	1	20
SB		FASH 113	Textiles	39	36	0.10	3.90	117	1,170	1	40	
		FCS 113	Textiles	2	2	0.10	0.20	6	60	1	40	
SH		FASH 119	Clothing, Culture, & Society	31	30	0.10	3.10	93	930	1	40	
		FCS 119	Clothing, Culture and Society	18	17	0.10	1.80	54	540	1	40	
<b>Spring 2005</b>	FASH	151	Fashion Merchandising	20	13	0.20	2.00	60	300	1	40	
		690	Special Projects	3	2	0.00	0.17	5	#INF	1	20	
	SB	FASH 113	Textiles	28	27	0.10	2.80	84	840	1	40	
		FCS 113	Textiles	9	7	0.10	0.90	27	270	1	40	
	SH	FASH 119	Clothing, Culture, & Society	33	31	0.10	3.30	99	990	1	40	
		FCS 119	Clothing, Culture and Society	17	16	0.10	1.70	51	510	1	40	
<b>Spring 2006</b>	FASH	151	Fashion Merchandising	23	18	0.20	2.30	69	345	1	40	
		690	Special Projects	2	2	0.00	0.13	4	#INF	1	20	
	SB	FASH 113	Textiles	23	22	0.10	2.30	69	690	1	41	
		FCS 113	Textiles	15	13	0.10	1.50	45	450	1	41	
	SH	FASH 119	Clothing, Culture, & Society	31	27	0.10	3.10	93	930	1	40	
		FCS 119	Clothing, Culture and Society	14	13	0.10	1.40	42	420	1	40	
<b>Spring 2007</b>	FASH	151	Fashion Merchandising	27	19	0.20	2.70	81	405	1	40	
		690	Special Projects	3	1	0.00	0.27	8	#INF	1	20	
	SB	FASH 113	Textiles	26	25	0.10	2.60	78	780	1	41	

				<b>Census Headcount</b>	<b>End of Term Headcount</b>	<b>FTEF</b>	<b>FTES</b>	<b>WSCH</b>	<b>Load</b>	<b>Sections</b>	<b>Max Enroll</b>
	FCS	113	Textiles	11	9	0.10	1.10	33	330	1	41
SH	FASH	119	Clothing, Culture, & Society	27	25	0.10	2.70	81	810	1	40
	FCS	119	Clothing, Culture and Society	19	17	0.10	1.90	57	570	1	40
<b>Spring 2008</b>	FASH	151	Fashion Merchandising	30	24	0.20	3.00	90	450	1	40
		690	Special Projects	2	2	0.00	0.13	4	#INF	1	20
SB	FASH	113	Textiles	27	24	0.10	2.70	81	810	1	41
	FCS	113	Textiles	8	8	0.10	0.80	24	240	1	41
SH	FASH	119	Clothing, Culture, & Society	24	21	0.10	2.40	72	720	1	40
	FCS	119	Clothing, Culture and Society	15	10	0.10	1.50	45	450	1	40

Source: SMCCCD Data Warehouse

\*Note: Report includes the following crosslisted courses: FCS 113, FCS 119. Courses are sorted by crosslist group code.

- Census Headcount: Number of duplicated headcount at final census.
- End of Term Headcount: Number of duplicated headcount at the end of the term.
- FTEF: Total number of full time equivalent faculty assigned.
- FTES: Total number of full time equivalent students enrolled at first census.
- WSCH: Weekly student contact hours generated by census enrollments.
- Load: The ratio of WSCH to FTEF, used to measure productivity.
- Sections: Total number of sections offered per semester.
- Max Enroll: The enrollment capacity or maximum enrollment as defined in curriculum.