

## Department Productivity: By Year and By Term

	Census Headcount	End of Term Headcount	FTEF	FTES	WSCH	Load	Sections	Max Enroll
2003/04	622	502	9.67	162.66	4,880	505	24	736
2004/05	571	472	9.73	146.57	4,397	452	26	870
2005/06	754	593	14.87	171.85	5,156	347	40	1,235
2006/07	1,043	840	13.67	220.53	6,616	484	40	3,162
2007/08	1,279	1,038	14.80	245.52	7,366	498	48	5,353

	Census Headcount	End of Term Headcount	FTEF	FTES	WSCH	Load	Sections	Max Enroll
Fall 2003	308	256	4.60	84.00	2,520	548	11	335
Fall 2004	287	245	4.67	76.27	2,288	490	12	440
Fall 2005	360	271	6.33	86.97	2,609	412	16	495
Fall 2006	464	358	6.33	106.34	3,190	504	18	566
Fall 2007	636	510	6.87	120.62	3,619	527	23	2,637
Spring 2004	306	238	4.87	78.66	2,360	485	12	386
Spring 2005	284	227	5.07	70.31	2,109	416	14	430
Spring 2006	365	297	8.33	81.95	2,458	295	23	710
Spring 2007	504	428	6.47	102.63	3,079	476	19	2,514
Spring 2008	560	462	7.40	111.39	3,342	452	23	2,656
Summer 2003	8	8	0.20				1	15
Summer 2005	29	25	0.20	2.94	88	441	1	30
Summer 2006	75	54	0.87	11.57	347	400	3	82
Summer 2007	83	66	0.53	13.51	405	760	2	60

Source: SMCCCD Data Warehouse

Census Headcount: Number of duplicated headcount at final census.

End of Term Headcount: Number of duplicated headcount at the end of the term.

FTEF: Total number of full time equivalent faculty assigned.

FTES: Total number of full time equivalent students enrolled at first census.

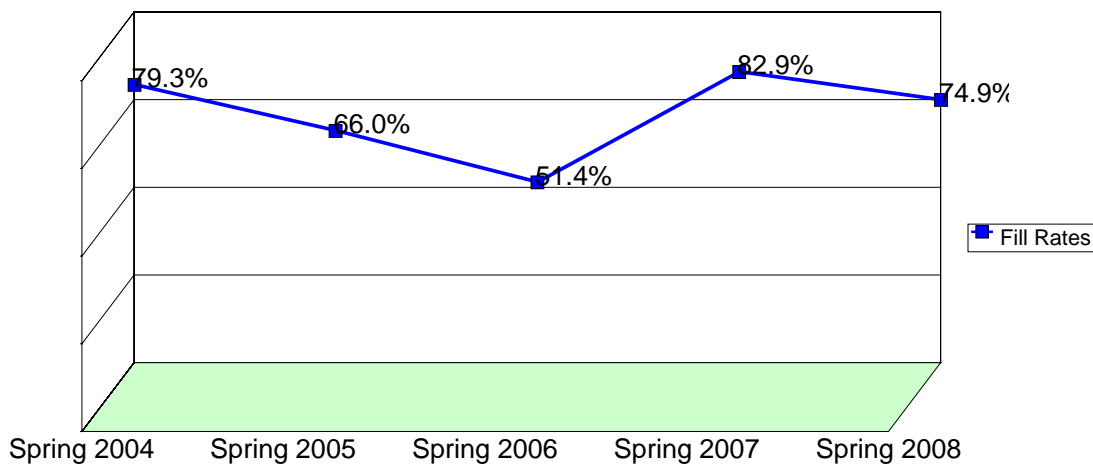
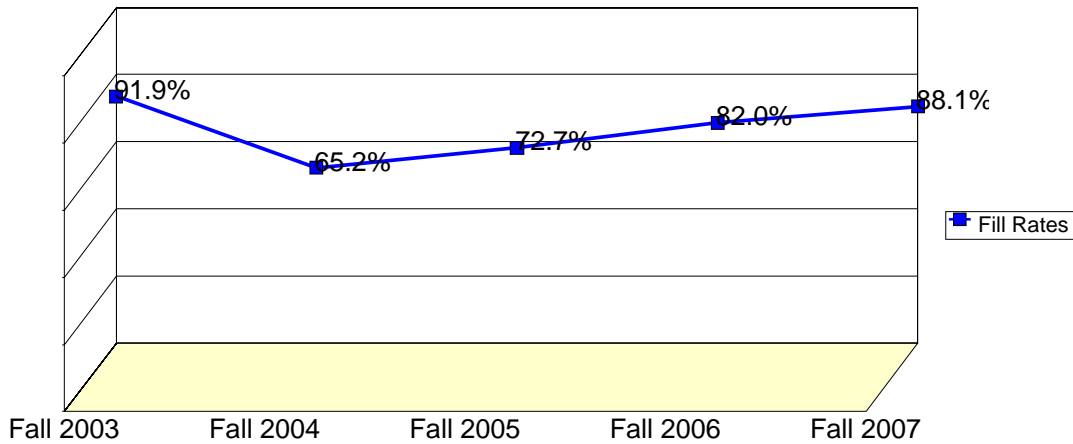
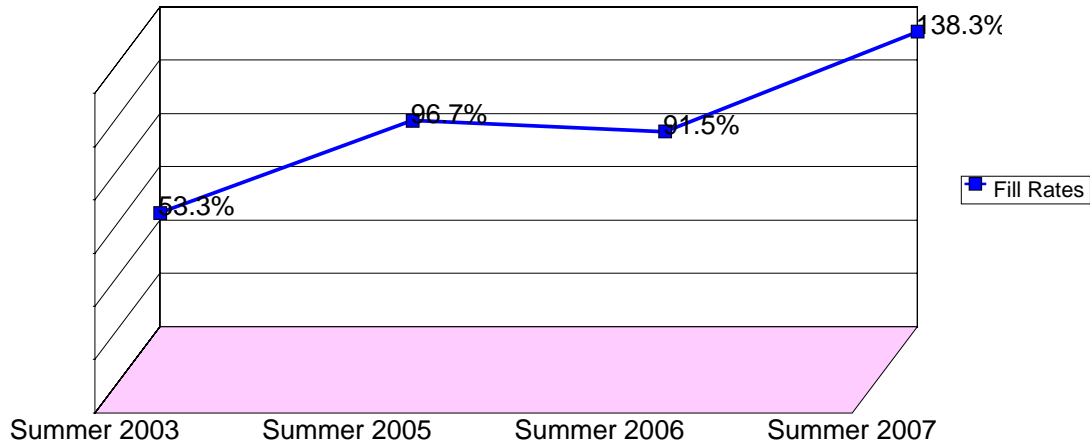
WSCH: Weekly student contact hours generated by census enrollments.

Load: The ratio of WSCH to FTEF, used to measure productivity.

Sections: Total number of sections offered per semester.

Max Enroll: The enrollment capacity or maximum enrollment as defined in curriculum.

## Department Fill Rates by Term



Source: SMCCCD Data Warehouse

\*Note: For a list of courses included in this report, see Department Productivity: Term by Course. Interdepartmental crosslisted courses are included in fill rate figures only. Crosslisted courses have been combined to calculate a single fill rate.

Fill Rates: The percent a class fills/enrolls based on capacity or enrollment maximum defined in the curriculum (does not include positive attendance, open entry/open exit, or independent study classes).

# Department Productivity: Term by Course

ESOL Department  
2003/04 to 2007/08

				Census Headcount	End of Term Headcount	FTEF	FTES	WSCH	Load	Sections	Max Enroll	
<b>Fall 2003</b>	ESOL	810 ENGL Spkrs Other Languages I	32	25	0.60	10.67	320	533	1	30		
		820 ENGL Spkrs Other Languages II	39	33	0.60	13.00	390	650	1	30		
		824 ESOLReadingforConversation,Int	15	10	0.20	2.00	60	300	1	35		
		830 ENGL Spkrs Other Languages III	55	44	1.20	18.33	550	458	2	65		
		831 ENGL Spkrs Other Lang III (1)	37	30	0.27	6.17	185	694	1	40		
		840 ENGL Spkrs Other Languages IV	73	63	1.20	24.33	730	608	2	65		
		841 ENGL Spkrs Other Lang IV (1st)	31	29	0.27	5.17	155	581	1	40		
YE	ESOL	821 ENGL Spkrs Other Lang II (1st)	19	17	0.13	3.17	95	713	1	30		
		822 ENGL Spkrs Other Lang II (2nd)	7	5	0.13	1.17	35	263	1	30		
<b>Fall 2004</b>	ESOL	810 ENGL Spkrs Other Languages I	27	23	0.60	9.00	270	450	1	35		
		811 ENGL Spkrs Other Lang I (1st)	26	24	0.13	4.33	130	975	1	35		
		812 ENGL Spkrs Other Lang. I (2nd)	4	4	0.13	0.67	20	150	1	30		
		820 ENGL Spkrs Other Languages II	33	32	0.60	11.00	330	550	1	35		
		821 ENGL Spkrs Other Lang II (1st)	21	18	0.27	3.50	105	394	1	35		
		830 ENGL Spkrs Other Languages III	38	36	1.20	12.67	380	317	2	70		
		831 ENGL Spkrs Other Lang III (1)	31	24	0.27	5.17	155	581	1	35		
		840 ENGL Spkrs Other Languages IV	75	60	1.20	25.00	750	625	2	70		
		841 ENGL Spkrs Other Lang IV (1st)	26	20	0.27	4.33	130	487	1	35		
		880 Vocab Practice for Non-Native	6	4		0.60	18		1	60		
<b>Fall 2005</b>	ESOL	400 Comp for Nonnative Speakers	109	82	1.67	21.80	654	392	5	145		
		810 ENGL Spkrs Other Languages I	19	16	0.60	6.33	190	317	1	35		
		820 ENGL Spkrs Other Languages II	22	19	0.60	7.33	220	367	1	35		
		821 ENGL Spkrs Other Lang II (1st)	30	18	0.27	5.00	150	562	1	35		
		830 ENGL Spkrs Other Languages III	39	26	1.20	13.00	390	325	2	70		
		831 ENGL Spkrs Other Lang III (1)	25	22	0.27	4.17	125	469	1	35		
		840 ENGL Spkrs Other Languages IV	60	44	1.20	20.00	600	500	2	70		
		841 ENGL Spkrs Other Lang IV (1st)	36	27	0.27	6.00	180	675	1	35		
		YQ	ESOL	811 ENGL Spkrs Other Lang I (1st)	17	14	0.13	2.83	85	638	1	35
				812 ENGL Spkrs Other Lang. I (2nd)	3	3	0.13	0.50	15	113	1	35
<b>Fall 2006</b>	ESOL	400 Comp for Nonnative Speakers	109	84	1.33	22.53	676	507	4	104		
		English Comp-Nonnative Speaker	27	24	0.67	5.40	162	243	2	80		
		820 ENGL Spkrs Other Languages II	27	24	0.60	9.18	275	459	1	35		
		830 ENGL Spkrs Other Languages III	53	36	1.20	18.02	541	451	2	70		
		831 ENGL Spkrs Other Lang III (1)	35	31	0.27	6.07	182	682	1	35		
		840 ENGL Spkrs Other Languages IV	78	48	1.20	26.52	796	663	2	70		
		841 ENGL Spkrs Other Lang IV (1st)	30	21	0.27	5.20	156	585	1	35		
		855 Accent Reduction	26	24	0.20	3.64	109	546	1	35		
		875 English Grammar for ESOL	15	8	0.20	1.50	45	225	1	35		
		880 Basic Conversational English	34	32	0.13	3.09	93	695	1	32		
YQ	ESOL	811 ENGL Spkrs Other Lang I (1st)	23	21	0.13	3.99	120	897	1	35		
		812 ENGL Spkrs Other Lang. I (2nd)	7	5	0.13	1.21	36	273	1	35		
<b>Fall 2007</b>	ESOL	400 Comp for No-Native Speakers	34	25	0.33	7.03	211	632	1	26		
		Comp for Non-Native Speakers	107	91	1.00	22.25	667	667	3	78		
		655 ESL Supplement	73	66	0.40	5.61	168	420	2	1,998		
		800 ESOL - Novice	16	15	0.13	0.98	29	219	1	30		

			Census	End of	FTEF	FTES	WSCH	Load	Sections	Max	
			Headcount	Term						Enroll	
		801	Basic Conversational English	24	18	0.13	1.84	55	414	1	35
		802	Int. Conversational English	34	27	0.13	2.27	68	510	1	35
		820	ENGL Spkrs Other Languages II	29	27	0.60	9.86	296	493	1	35
		830	ENGL Spkrs Other Languages III	29	23	0.60	9.86	296	493	1	35
		831	ENGL Spkrs Other Lang III (1)	18	16	0.27	3.12	94	351	1	35
		840	ENGL Spkrs Other Languages IV	78	53	1.20	26.52	796	663	2	70
		841	ENGL Spkrs Other Lang IV (1st)	42	36	0.60	7.65	229	382	2	61
		851	Hi-Beginning ESL Listen&Speak	27	19	0.20	3.78	113	567	1	35
		861	Hi-Beginning ESL Read & Write	31	24	0.27	5.37	161	604	1	35
		871	High-Beginning ESL Grammar	27	20	0.20	3.78	113	567	1	35
		875	Advanced ESL Grammar & Editing	23	13	0.20	3.22	97	483	1	35
		890	Read & Comp Practice for ESL	19	17	0.33	3.17	95	285	1	30
	YK	ESOL 821	ENGL Spkrs Other Lang II (1st)	23	18	0.13	3.99	120	897	1	29
		822	ENGL Spkrs Other Lang II (2nd)	2	2	0.13	0.35	10	78	1	29
<b>Spring 2004</b>	ESOL	810	ENGL Spkrs Other Languages I	27	19	0.60	9.00	270	450	1	26
		820	ENGL Spkrs Other Languages II	32	27	0.60	10.67	320	533	1	35
		824	ESOL Read for Conver, Int.	17	12	0.20	2.49	75	374	1	35
		830	ENGL Spkrs Other Languages III	55	46	1.20	18.33	550	458	2	70
		832	ENGL Spkrs Other Lang III (2)	39	27	0.27	6.50	195	731	1	35
		840	ENGL Spkrs Other Languages IV	54	40	1.20	18.00	540	450	2	70
		842	ENGL Spkrs Other Lang IV (2nd)	39	31	0.27	6.50	195	731	1	35
	YI	ESOL 811	ENGL Spkrs Other lang 1(1st)	17	15	0.13	2.83	85	638	1	40
		812	ENGL Spkrs Other Lang. I (2nd)	5	5	0.13	0.83	25	188	1	40
	YJ	ESOL 822	ENGL Spkrs Other Lang II (2nd)	21	16	0.27	3.50	105	394	1	40
<b>Spring 2005</b>	ESOL	810	ENGL Spkrs Other Languages I	14	10	0.60	4.67	140	233	1	35
		820	ENGL Spkrs Other Languages II	24	17	0.60	8.00	240	400	1	35
		824	ESOL Read for Conver, Int.	26	21	0.20	3.47	104	520	1	35
		830	ENGL Spkrs Other Languages III	52	45	1.20	17.33	520	433	2	70
		832	ENGL Spkrs Other Lang III (2)	26	22	0.27	4.33	130	487	1	35
		840	ENGL Spkrs Other Languages IV	56	44	1.20	18.67	560	467	2	70
		842	ENGL Spkrs Other Lang IV (2nd)	24	17	0.27	4.00	120	450	1	35
		875	English Grammar for ESOL	14	12	0.20	1.44	43	216	1	35
	YI	ESOL 811	ENGL Spkrs Other lang 1(1st)	22	20	0.13	3.67	110	825	1	40
		812	ENGL Spkrs Other Lang. I (2nd)	14	11	0.13	2.33	70	525	1	40
	YJ	ESOL 821	ENGL Spkrs Other Lang II (1st)	6	3	0.13	1.20	36	270	1	40
		822	ENGL Spkrs Other Lang II (2nd)	6	5	0.13	1.20	36	270	1	40
<b>Spring 2006</b>	ESOL	400	English Comp-Nonnative Speaker	100	81	1.67	20.11	603	362	5	145
		810	ENGL Spkrs Other Languages I	18	17	1.20	6.00	180	150	2	70
		820	ENGL Spkrs Other Languages II	21	17	1.20	7.00	210	175	2	70
		823	ESOL:Listening for Writing,Int	9	7	0.20	1.20	36	180	1	30
		830	ENGL Spkrs Other Languages III	42	32	1.20	14.00	420	350	2	70
		832	ENGL Spkrs Other Lang III (2)	20	15	0.27	3.33	100	375	1	35
		840	ENGL Spkrs Other Languages IV	44	32	1.20	14.67	440	367	2	70
		842	ENGL Spkrs Other Lang IV (2nd)	26	19	0.27	4.33	130	487	1	35
		855	Accent Reduction	18	17	0.20	1.80	54	270	1	35
		875	English Grammar for ESOL	25	20	0.40	2.50	75	188	2	70

			Census Headcount	End of Term Headcount	FTEF	FTES	WSCH	Load	Sections	Max Enroll
YI	ESOL 811	ENGL Spkrs Other lang 1(1st)	9	9	0.13	1.50	45	338	1	40
		812 ENGL Spkrs Other Lang. I (2nd)	9	8	0.13	1.50	45	338	1	40
YJ	ESOL 821	ENGL Spkrs Other Lang II (1st)	8	7	0.13	1.33	40	300	1	40
		822 ENGL Spkrs Other Lang II (2nd)	16	16	0.13	2.67	80	600	1	40
<b>Spring 2007</b>	ESOL 400	English Comp-Nonnative Speaker	131	114	1.67	26.20	786	472	5	154
		655 ESL Supplement	76	70	0.40	8.28	248	621	2	1,998
		801 Basic Conversational English	26	19	0.13	2.60	78	585	1	35
		802 Int. Conversational English	30	27	0.13	3.00	90	675	1	35
		810 ENGL Spkrs Other Languages I	21	20	0.60	7.00	210	350	1	35
		812 ENGL Spkrs Other Lang. I (2nd)	20	19	0.27	3.33	100	375	1	35
		822 ENGL Spkrs Other Lang II (2nd)	16	13	0.27	2.67	80	300	1	35
		830 ENGL Spkrs Other Languages III	33	26	0.60	11.00	330	550	1	35
		832 ENGL Spkrs Other Lang III (2)	27	19	0.27	4.50	135	506	1	35
		840 ENGL Spkrs Other Languages IV	71	52	1.20	23.67	710	592	2	70
		842 ENGL Spkrs Other Lang IV (2nd)	37	33	0.60	6.94	208	347	2	35
		890 Read & Comp Practice for ESL	16	16	0.33	3.44	103	310	1	12
<b>Spring 2008</b>	ESOL 400	English Comp-Nonnative Speaker	187	156	2.67	38.93	1,168	438	8	208
		655 ESL Supplement	67	65	0.40	7.14	214	535	2	1,998
		801 Basic Conversational English	25	18	0.13	2.67	80	600	1	35
		802 Int. Conversational English	40	27	0.27	4.27	128	480	2	70
		820 ENGL Spkrs Other Languages II	23	22	0.60	7.82	235	391	1	35
		830 ENGL Spkrs Other Languages III	30	24	0.60	10.20	306	510	1	35
		832 ENGL Spkrs Other Lang III (2)	24	20	0.27	4.16	125	468	1	35
		840 ENGL Spkrs Other Languages IV	56	39	1.20	19.04	571	476	2	70
		842 ENGL Spkrs Other Lang IV (2nd)	35	32	0.60	6.84	205	342	2	65
		861 Hi-Beginning ESL Read & Write	26	25	0.27	4.51	135	507	1	35
		871 High-Beginning ESL Grammar	28	24	0.20	3.92	118	588	1	35
		875 Advanced ESL Grammar & Editing	19	10	0.20	1.90	57	285	1	35
<b>Summer 2003</b>	ESOL 880	Vocational ESOL	8	8	0.20				1	15
<b>Summer 2005</b>	ESOL 875	English Grammar for ESOL	29	25	0.20	2.94	88	441	1	30
<b>Summer 2006</b>	ESOL 400	English Comp-Nonnative Speaker	45	30	0.67	8.74	262	393	2	52
		875 English Grammar for ESOL	30	24	0.20	2.82	85	423	1	30
<b>Summer 2007</b>	ESOL 400	English Comp-Nonnative Speaker	47	38	0.33	9.67	290	870	1	30
		875 Advanced ESL Grammar & Editing	36	28	0.20	3.84	115	576	1	30

Source: SMCCCD Data Warehouse

\*Note: Courses are sorted by crosslist group code. Interdepartmental crosslisted courses are included in fill rate figures only.

Census Headcount: Number of duplicated headcount at final census.

End of Term Headcount: Number of duplicated headcount at the end of the term.

FTEF: Total number of full time equivalent faculty assigned.

FTES: Total number of full time equivalent students enrolled at first census.

WSCH: Weekly student contact hours generated by census enrollments.

Load: The ratio of WSCH to FTEF, used to measure productivity.

Sections: Total number of sections offered per semester.

Max Enroll: The enrollment capacity or maximum enrollment as defined in curriculum.

06/09/2008