

Department Success and Retention

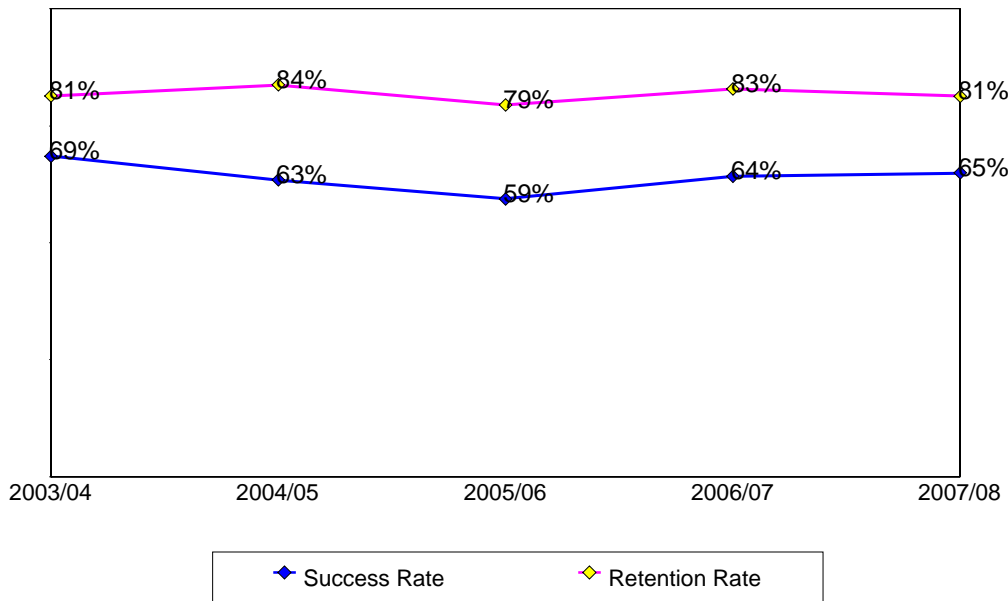
This report contains success and retention rates by various demographic segments and by course. Annual data are an aggregate of the fall and spring semesters. The following parameters have been applied:

- Success Counts: Number of students with A,B,C,CR grades.
- Success Rate: The percentage of students who complete a course with a grade of A,B,C,CR out of total enrollments.
- Retention Counts: Number of students with A,B,C,D,F,CR,NC, I grades.
- Retention Rate: The percentage of students who complete a course with a grade of A,B,C,D,F,CR,NC, I out of total headcount.

Annual Success and Retention

	Headcount	Success Count	Success Rate	Retention Count	Retention Rate
2003/04	607	416	69%	494	81%
2004/05	566	359	63%	474	84%
2005/06	716	425	59%	569	79%
2006/07	947	608	64%	785	83%
2007/08	1,174	762	65%	955	81%
Change from 2006/07 to 2007/08	227	154	1%	170	-2%
Totals & Averages	4,010	2,570	64%	3,277	82%

Annual (Fall/Spring) Success and Retention Rates



Source: SMCCD Data Warehouse

Success and Retention By Term

	Headcount	Success Count	Success Rate	Retention Count	Retention Rate
Fall 2003	302	228	75%	256	85%
Fall 2004	285	181	64%	246	86%
Fall 2005	355	201	57%	271	76%
Fall 2006	449	267	59%	360	80%
Fall 2007	628	389	62%	510	81%
Spring 2004	305	188	62%	238	78%
Spring 2005	281	178	63%	228	81%
Spring 2006	361	224	62%	298	83%
Spring 2007	498	341	68%	425	85%
Spring 2008	546	373	68%	445	82%
Totals & Averages	4,010	2,570	64%	3,277	82%

Grade Distribution

	A		B		C		CR		D		F		NC		W	
Fall 2003	46	16%	114	40%	55	18%	10	3%	11	3%	17	6%			44	14%
Fall 2004	44	16%	71	25%	58	21%	3	1%	27	9%	37	14%	1	0%	38	14%
Fall 2005	45	13%	85	23%	69	20%			31	9%	38	12%			83	24%
Fall 2006	51	12%	112	26%	93	21%	1	0%	44	10%	47	10%			88	20%
Fall 2007	71	11%	104	17%	127	21%	70	12%	39	6%	43	9%	26	4%	102	19%
Spring 2004	38	13%	77	25%	58	18%	12	4%	18	6%	32	10%			65	23%
Spring 2005	41	14%	63	24%	54	19%	17	6%	27	10%	18	7%	5	2%	49	18%
Spring 2006	60	17%	93	26%	60	16%	5	1%	30	8%	38	11%	5	1%	59	19%
Spring 2007	66	13%	134	27%	81	17%	57	10%	28	5%	36	9%	15	3%	67	15%
Spring 2008	42	9%	107	21%	125	23%	86	17%	34	6%	35	7%	18	4%	77	14%

Source: SMCCD Data Warehouse

Success and Retention by Ethnicity

		Headcount	Success Count	Success Rate	Retention Count	Retention Rate
2003/04	African American	1	1	100%	1	100%
	Asian	216	170	79%	185	86%
	Filipino	42	35	83%	39	93%
	Hispanic	285	166	58%	218	76%
	Native American	1				
	Other	13	10	77%	11	85%
	White	38	25	66%	30	79%
	Unreported	11	9	82%	10	91%
	Totals & Averages	607	416	69%	494	81%
2004/05	Asian	183	107	58%	147	80%
	Filipino	33	29	88%	30	91%
	Hispanic	288	180	63%	243	84%
	Other	9	6	67%	8	89%
	White	44	32	73%	39	89%
	Unreported	9	5	56%	7	78%
	Totals & Averages	566	359	63%	474	84%
2005/06	African American	1	1	100%	1	100%
	Asian	262	162	62%	195	74%
	Filipino	37	19	51%	30	81%
	Hispanic	341	192	56%	278	82%
	Other	11	7	64%	9	82%
	White	46	32	70%	42	91%
	Unreported	18	12	67%	14	78%
	Totals & Averages	716	425	59%	569	79%
2006/07	African American	2			2	100%
	Asian	377	239	63%	311	82%
	Filipino	90	70	78%	75	83%
	Hispanic	376	222	59%	309	82%
	Native American	1	1	100%	1	100%
	Other	17	13	76%	15	88%
	White	60	50	83%	55	92%
	Unreported	24	13	54%	17	71%
	Totals & Averages	947	608	64%	785	83%
2007/08	Asian	516	351	68%	421	82%
	Filipino	76	58	76%	66	87%
	Hispanic	428	240	56%	337	79%
	Native American	2	2	100%	2	100%
	Other	19	15	79%	17	89%
	White	96	78	81%	83	86%
	Unreported	37	18	49%	29	78%
	Totals & Averages	1,174	762	65%	955	81%

Source: SMCCD Data Warehouse

Success and Retention by Gender

		Headcount	Success Count	Success Rate	Retention Count	Retention Rate
2003/04	Female	366	270	74%	317	87%
	Male	238	143	60%	174	73%
	Totals & Averages	604	413	68%	491	81%
2004/05	Female	335	236	70%	290	87%
	Male	225	120	53%	179	80%
	Unreported	4	2	50%	4	100%
	Totals & Averages	564	358	63%	473	84%
2005/06	Female	394	257	65%	320	81%
	Male	310	159	51%	240	77%
	Unreported	6	6	100%	6	100%
	Totals & Averages	710	422	59%	566	80%
2006/07	Female	552	384	70%	476	86%
	Male	380	216	57%	298	78%
	Unreported	11	7	64%	10	91%
	Totals & Averages	943	607	64%	784	83%
2007/08	Female	685	470	69%	575	84%
	Male	466	277	59%	359	77%
	Unreported	14	9	64%	13	93%
	Totals & Averages	1,165	756	65%	947	81%

Success and Retention by Day/Evening Status

		Headcount	Success Count	Success Rate	Retention Count	Retention Rate
2003/04	Day	393	290	74%	319	81%
	Evening	214	126	59%	175	82%
2004/05	Day	349	238	68%	292	84%
	Evening	217	121	56%	182	84%
2005/06	Day	427	265	62%	340	80%
	Evening	289	160	55%	229	79%
2006/07	Day	572	380	66%	464	81%
	Evening	375	228	61%	321	86%
2007/08	Day	811	548	68%	664	82%
	Evening	363	214	59%	291	80%

Source: SMCCD Data Warehouse

Success and Retention by Age

		Headcount	Success Count	Success Rate	Retention Count	Retention Rate
2003/04	Under 18	7	6	86%	7	100%
	Age 18-22	140	82	59%	101	72%
	Age 23-28	147	105	71%	123	84%
	Age 29-39	185	130	70%	149	81%
	Age 40-49	106	77	73%	94	89%
	Age 50-59	18	13	72%	17	94%
	Age 60+	4	3	75%	3	75%
	Totals & Averages	607	416	69%	494	81%
2004/05	Under 18	5	3	60%	3	60%
	Age 18-22	133	81	61%	110	83%
	Age 23-28	138	83	60%	110	80%
	Age 29-39	181	113	62%	152	84%
	Age 40-49	73	49	67%	64	88%
	Age 50-59	28	24	86%	28	100%
	Age 60+	8	6	75%	7	88%
	Totals & Averages	566	359	63%	474	84%
2005/06	Under 18	9	6	67%	6	67%
	Age 18-22	203	123	61%	161	79%
	Age 23-28	176	103	59%	138	78%
	Age 29-39	198	114	58%	150	76%
	Age 40-49	92	55	60%	83	90%
	Age 50-59	32	20	63%	25	78%
	Age 60+	6	4	67%	6	100%
	Totals & Averages	716	425	59%	569	79%
2006/07	Under 18	52	45	87%	45	87%
	Age 18-22	291	196	67%	240	82%
	Age 23-28	206	121	59%	160	78%
	Age 29-39	199	109	55%	161	81%
	Age 40-49	139	97	70%	128	92%
	Age 50-59	43	24	56%	34	79%
	Age 60+	17	16	94%	17	100%
	Totals & Averages	947	608	64%	785	83%
2007/08	Under 18	68	54	79%	61	90%
	Age 18-22	400	265	66%	325	81%
	Age 23-28	252	153	61%	187	74%
	Age 29-39	235	136	58%	193	82%
	Age 40-49	137	90	66%	116	85%
	Age 50-59	67	52	78%	60	90%
	Age 60+	15	12	80%	13	87%
	Totals & Averages	1,174	762	65%	955	81%

Source: SMCCD Data Warehouse

Success and Retention by Enrollment Status

		Headcount	Success Count	Success Rate	Retention Count	Retention Rate
2003/04	Continuing Student	344	243	71%	287	83%
	First-Time Student	123	72	59%	90	73%
	First-Time Transfer Student	73	57	78%	62	85%
	Returning Student	56	36	64%	46	82%
	Returning Transfer Student	11	8	73%	9	82%
2004/05	Continuing Student	294	190	65%	243	83%
	First-Time Student	118	71	60%	105	89%
	First-Time Transfer Student	82	58	71%	70	85%
	Returning Student	61	34	56%	48	79%
	Returning Transfer Student	11	6	55%	8	73%
2005/06	Continuing Student	389	236	61%	312	80%
	First-Time Student	163	86	53%	126	77%
	First-Time Transfer Student	90	60	67%	74	82%
	Returning Student	55	27	49%	40	73%
	Returning Transfer Student	19	16	84%	17	89%
2006/07	Continuing Student	450	292	65%	375	83%
	Currently K-12	60	55	92%	55	92%
	First-Time Student	230	129	56%	184	80%
	First-Time Transfer Student	123	86	70%	105	85%
	Returning Student	69	38	55%	54	78%
	Returning Transfer Student	15	8	53%	12	80%
2007/08	Continuing Student	561	363	65%	457	81%
	Currently K-12	66	56	85%	61	92%
	First-Time Student	262	150	57%	203	77%
	First-Time Transfer Student	181	135	75%	153	85%
	Returning Student	81	44	54%	65	80%
	Returning Transfer Student	23	14	61%	16	70%

Source: SMCCD Data Warehouse