

Department Success and Retention

English Department
2003/04 to 2007/08

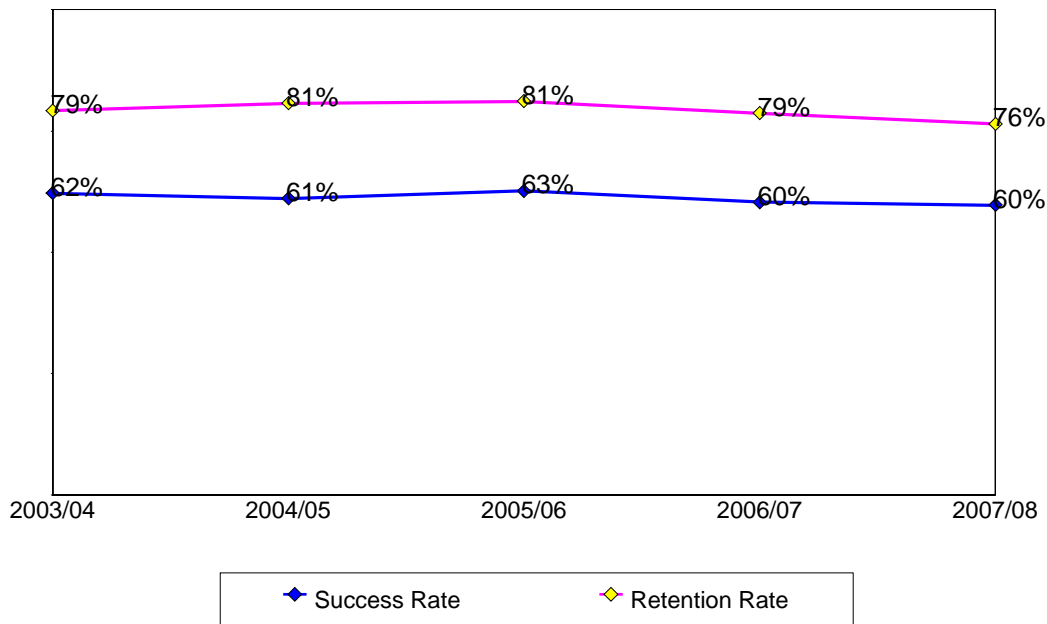
This report contains success and retention rates by various demographic segments and by course. Annual data are an aggregate of the fall and spring semesters. The following parameters have been applied:

- Success Counts: Number of students with A,B,C,CR grades.
- Success Rate: The percentage of students who complete a course with a grade of A,B,C,CR out of total enrollments.
- Retention Counts: Number of students with A,B,C,D,F,CR,NC, I grades.
- Retention Rate: The percentage of students who complete a course with a grade of A,B,C,D,F,CR,NC, I out of total headcount.

Annual Success & Retention

	Headcount	Success Count	Success Rate	Retention Count	Retention Rate
2003/04	3,786	2,355	62%	2,999	79%
2004/05	3,608	2,204	61%	2,913	81%
2005/06	3,725	2,334	63%	3,023	81%
2006/07	3,994	2,410	60%	3,143	79%
2007/08	4,008	2,394	60%	3,065	76%
Change from 2006/07 to 2007/08	14	-16	-1%	-78	-2%
Totals & Averages	19,121	11,697	61%	15,143	79%

Annual (Fall/Spring) Success and Retention Rates



Success & Retention By Term

	Headcount	Success Count	Success Rate	Retention Count	Retention Rate
Fall 2003	1,853	1,138	61%	1,447	78%
Fall 2004	1,753	1,080	62%	1,446	82%
Fall 2005	1,826	1,139	62%	1,447	79%
Fall 2006	2,052	1,241	60%	1,621	79%
Fall 2007	2,017	1,229	61%	1,569	78%
Spring 2004	1,933	1,217	63%	1,552	80%
Spring 2005	1,855	1,124	61%	1,467	79%
Spring 2006	1,899	1,195	63%	1,576	83%
Spring 2007	1,942	1,169	60%	1,522	78%
Spring 2008	1,991	1,165	59%	1,496	75%
Totals & Averages	19,121	11,697	61%	15,143	79%

Grade Distribution

	B		A		C		CR		D		F		NC		W	
Fall 2003	406	22%	271	14%	361	20%	99	5%	111	6%	87	5%	111	6%	387	22%
Fall 2004	410	23%	242	14%	373	21%	54	3%	134	8%	175	10%	54	3%	302	18%
Fall 2005	417	23%	287	15%	409	23%	24	1%	137	8%	144	8%	27	1%	375	21%
Fall 2006	461	22%	317	15%	426	21%	31	2%	139	7%	188	10%	50	2%	423	21%
Fall 2007	478	25%	313	15%	422	22%	8	0%	157	8%	160	8%	2	0%	444	21%
Spring 2004	472	25%	278	14%	389	20%	75	4%	124	6%	143	8%	65	3%	366	20%
Spring 2005	438	23%	278	15%	365	20%	40	2%	159	9%	145	8%	38	2%	381	21%
Spring 2006	457	24%	281	14%	393	21%	58	3%	142	8%	201	11%	36	2%	311	17%
Spring 2007	424	21%	257	13%	427	22%	53	3%	103	6%	178	10%	51	3%	409	22%
Spring 2008	429	22%	285	14%	433	22%	14	1%	119	6%	188	10%	8	0%	485	24%

Source: SMCCCD Data Warehouse

Success and Retention by Ethnicity

		Headcount	Success Count	Success Rate	Retention Count	Retention Rate
2003/04	African American	154	81	53%	111	72%
	Asian	1,166	766	66%	943	81%
	Filipino	768	455	59%	583	76%
	Hispanic	793	452	57%	620	78%
	Native American	17	12	71%	15	88%
	Other	104	64	62%	82	79%
	White	688	461	67%	569	83%
	Unreported	96	64	67%	76	79%
	Totals & Averages	3,786	2,355	62%	2,999	79%
2004/05	African American	155	77	50%	134	86%
	Asian	1,078	669	62%	855	79%
	Filipino	796	475	60%	637	80%
	Hispanic	701	400	57%	551	79%
	Native American	16	7	44%	11	69%
	Other	84	61	73%	71	85%
	White	649	438	67%	550	85%
	Unreported	129	77	60%	104	81%
	Totals & Averages	3,608	2,204	61%	2,913	81%
2005/06	African American	146	77	53%	115	79%
	Asian	1,098	723	66%	906	83%
	Filipino	812	488	60%	631	78%
	Hispanic	690	392	57%	543	79%
	Native American	16	6	38%	9	56%
	Other	106	74	70%	94	89%
	White	667	445	67%	561	84%
	Unreported	190	129	68%	164	86%
	Totals & Averages	3,725	2,334	63%	3,023	81%
2006/07	African American	152	80	53%	119	78%
	Asian	1,153	702	61%	899	78%
	Filipino	875	504	58%	683	78%
	Hispanic	776	440	57%	599	77%
	Native American	20	9	45%	13	65%
	Other	92	56	61%	68	74%
	White	643	435	68%	525	82%
	Unreported	283	184	65%	237	84%
	Totals & Averages	3,994	2,410	60%	3,143	79%
2007/08	African American	157	83	53%	115	73%
	Asian	1,089	683	63%	860	79%
	Filipino	875	486	56%	637	73%
	Hispanic	838	473	56%	625	75%
	Native American	21	9	43%	14	67%
	Other	92	57	62%	70	76%
	White	672	446	66%	547	81%
	Unreported	264	157	59%	197	75%
	Totals & Averages	4,008	2,394	60%	3,065	76%

Success and Retention By Gender

		Headcount	Success Count	Success Rate	Retention Count	Retention Rate
2003/04	Female	2,025	1,313	65%	1,649	81%
	Male	1,731	1,020	59%	1,321	76%
	Unreported	18	13	72%	17	94%
	Totals & Averages	3,774	2,346	62%	2,987	79%
2004/05	Female	1,887	1,237	66%	1,555	82%
	Male	1,692	950	56%	1,335	79%
	Unreported	13	7	54%	9	69%
	Totals & Averages	3,592	2,194	61%	2,899	81%
2005/06	Female	1,865	1,229	66%	1,522	82%
	Male	1,793	1,055	59%	1,439	80%
	Unreported	37	27	73%	32	86%
	Totals & Averages	3,695	2,311	63%	2,993	81%
2006/07	Female	1,905	1,196	63%	1,512	79%
	Male	2,013	1,163	58%	1,564	78%
	Unreported	43	28	65%	39	91%
	Totals & Averages	3,961	2,387	60%	3,115	79%
Fall 2007	Female	965	621	64%	763	79%
	Male	1,020	588	58%	779	76%
	Unreported	23	14	61%	19	83%
	Totals & Averages	2,008	1,223	61%	1,561	78%
Spring 2008	Female	1,002	597	60%	755	75%
	Male	956	550	58%	714	75%
	Unreported	18	10	56%	14	78%
	Totals & Averages	1,976	1,157	59%	1,483	75%

Success and Retention by Day/Evening Status

		Headcount	Success Count	Success Rate	Retention Count	Retention Rate
2003/04	Day	2,852	1,749	61%	2,266	79%
	Evening	934	606	65%	733	78%
2004/05	Day	2,617	1,616	62%	2,155	82%
	Evening	991	588	59%	758	76%
2005/06	Day	2,716	1,651	61%	2,187	81%
	Evening	1,009	683	68%	836	83%
2006/07	Day	3,085	1,846	60%	2,440	79%
	Evening	909	564	62%	703	77%
2007/08	Day	3,125	1,865	60%	2,394	77%
	Evening	883	529	60%	671	76%

Source: SMCCCD Data Warehouse

Success and Retention by Gender

		Headcount	Success Count	Success Rate	Retention Count	Retention Rate
2003/04	Under 18	54	37	69%	47	87%
	Age 18-22	2,578	1,598	62%	2,034	79%
	Age 23-28	654	392	60%	500	76%
	Age 29-39	317	202	64%	255	80%
	Age 40-49	134	89	66%	115	86%
	Age 50-59	43	33	77%	43	100%
	Age 60+	6	4	67%	5	83%
	Totals & Averages	3,786	2,355	62%	2,999	79%
2004/05	Under 18	43	23	53%	39	91%
	Age 18-22	2,477	1,495	60%	2,015	81%
	Age 23-28	645	391	61%	498	77%
	Age 29-39	292	179	61%	229	78%
	Age 40-49	107	84	79%	93	87%
	Age 50-59	41	31	76%	36	88%
	Age 60+	3	1	33%	3	100%
	Totals & Averages	3,608	2,204	61%	2,913	81%
2005/06	Under 18	60	46	77%	55	92%
	Age 18-22	2,598	1,579	61%	2,115	81%
	Age 23-28	648	395	61%	501	77%
	Age 29-39	251	188	75%	212	84%
	Age 40-49	110	85	77%	94	85%
	Age 50-59	48	33	69%	37	77%
	Age 60+	10	8	80%	9	90%
	Totals & Averages	3,725	2,334	63%	3,023	81%
2006/07	Under 18	120	80	67%	102	85%
	Age 18-22	2,820	1,672	59%	2,221	79%
	Age 23-28	656	393	60%	504	77%
	Age 29-39	245	149	61%	182	74%
	Age 40-49	106	81	76%	92	87%
	Age 50-59	34	23	68%	29	85%
	Age 60+	13	12	92%	13	100%
	Totals & Averages	3,994	2,410	60%	3,143	79%
2007/08	Under 18	75	46	61%	64	85%
	Age 18-22	2,840	1,671	59%	2,176	77%
	Age 23-28	672	396	59%	493	73%
	Age 29-39	265	163	62%	205	77%
	Age 40-49	110	84	76%	89	81%
	Age 50-59	39	30	77%	33	85%
	Age 60+	7	4	57%	5	71%
	Totals & Averages	4,008	2,394	60%	3,065	76%

Source: SMCCCD Data Warehouse

Success and Retention by Day/Evening Status

		Headcount	Success Count	Success Rate	Retention Count	Retention Rate
2003/04	Continuing Student	2,742	1,715	63%	2,167	79%
	Currently K-12	28	18	64%	26	93%
	First-Time Student	472	292	62%	374	79%
	First-Time Transfer Student	198	119	60%	154	78%
	Returning Student	281	169	60%	222	79%
	Returning Transfer Student	65	42	65%	56	86%
2004/05	Continuing Student	2,702	1,672	62%	2,163	80%
	Currently K-12	11	6	55%	10	91%
	First-Time Student	412	226	55%	346	84%
	First-Time Transfer Student	176	118	67%	142	81%
	Returning Student	234	139	59%	196	84%
	Returning Transfer Student	73	43	59%	56	77%
2005/06	Continuing Student	2,583	1,634	63%	2,089	81%
	Currently K-12	15	13	87%	15	100%
	First-Time Student	560	342	61%	464	83%
	First-Time Transfer Student	230	153	67%	196	85%
	Returning Student	238	132	55%	180	76%
	Returning Transfer Student	97	58	60%	77	79%
2006/07	Continuing Student	2,657	1,620	61%	2,066	78%
	Currently K-12	67	46	69%	54	81%
	First-Time Student	685	394	58%	564	82%
	First-Time Transfer Student	242	157	65%	193	80%
	Returning Student	232	129	56%	179	77%
	Returning Transfer Student	109	64	59%	86	79%
2007/08	Continuing Student	2,899	1,762	61%	2,214	76%
	Currently K-12	40	19	48%	30	75%
	First-Time Student	464	266	57%	366	79%
	First-Time Transfer Student	253	150	59%	187	74%
	Returning Student	224	127	57%	167	75%
	Returning Transfer Student	127	69	54%	100	79%

Source: SMCCCD Data Warehouse

Department Awards Conferred

Awards by Type

	2004/05	2005/06	2006/07	2007/08	Total
Associate Degree	2	3	2	4	11
Total	2	3	2	4	11

Awards by Gender

	2004/05	2005/06	2006/07	2007/08	Total
Female		2	1	4	7
Male	2	1	1		4

Awards by Ethnicity

	2004/05	2005/06	2006/07	2007/08	Total
African American				1	1
Filipino				2	2
Hispanic			1		1
Pacific Islander		1			1
Unreported	1			1	2
White	1	2	1		4

Awards by Age

	2004/05	2005/06	2006/07	2007/08	Total
18-22	1	1	2	2	6
23-28		1		1	2
29-39				1	1
40-49		1			1
60+	1				1

Awards by Major

	2004/05	2005/06	2006/07	2007/08	Total
English	2	3	2	4	11

Source: SMCCCD Data Warehouse