

## Department Success and Retention

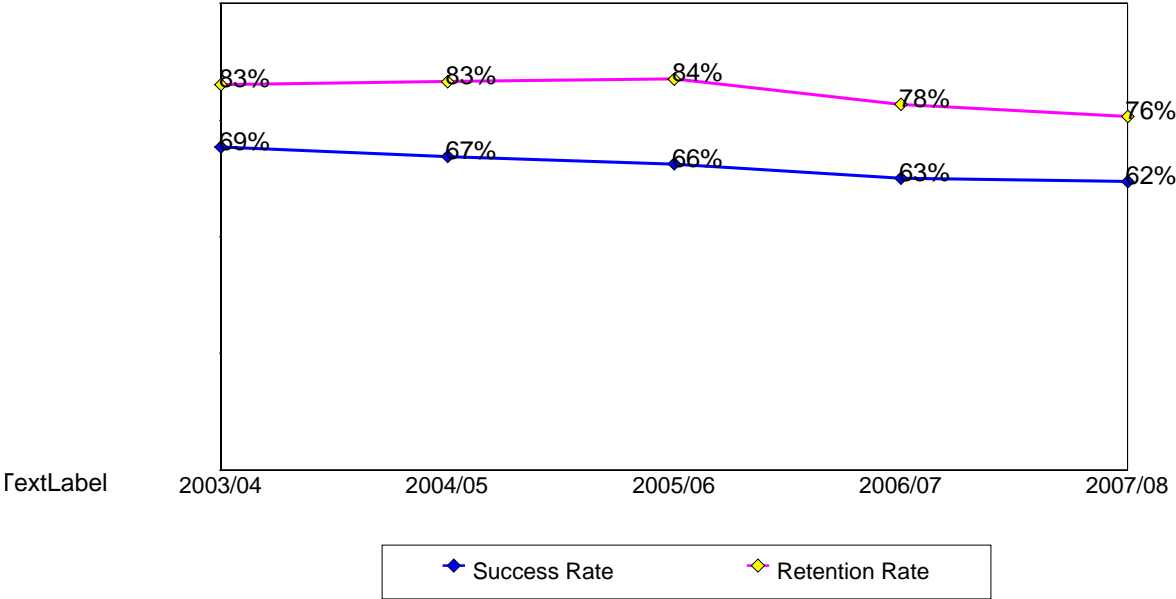
This report contains success and retention rates by various demographic segments and by course. Annual data are an aggregate of the fall and spring semesters. The following parameters have been applied:

- Success Counts: Number of students with A,B,C,CR grades.
- Success Rate: The percentage of students who complete a course with a grade of A,B,C,CR out of total enrollments.
- Retention Counts: Number of students with A,B,C,D,F,CR,NC, I grades.
- Retention Rate: The percentage of students who complete a course with a grade of A,B,C,D,F,CR,NC, I out of total headcount.

### Annual Success and Retention

	Headcount	Success Count	Success Rate	Retention Count	Retention Rate
2003/04	748	518	69%	618	83%
2004/05	747	502	67%	622	83%
2005/06	747	490	66%	626	84%
2006/07	721	451	63%	565	78%
2007/08	752	465	62%	570	76%
Change from 2006/07 to 2007/08	31	14	-1%	5	-3%
<b>Totals &amp; Averages</b>	<b>3,715</b>	<b>2,426</b>	<b>65%</b>	<b>3,001</b>	<b>81%</b>

**Annual (Fall/Spring) Success and Retention Rates**



06/19/08

Source: SMCCCD Data Warehouse

### Success and Retention By Term

	Headcount	Success Count	Success Rate	Retention Count	Retention Rate
Fall 2003	364	250	69%	297	82%
Fall 2004	376	259	69%	306	81%
Fall 2005	364	238	65%	301	83%
Fall 2006	318	195	61%	250	79%
Fall 2007	369	224	61%	280	76%
Spring 2004	384	268	70%	321	84%
Spring 2005	371	243	65%	316	85%
Spring 2006	383	252	66%	325	85%
Spring 2007	403	256	64%	315	78%
Spring 2008	383	241	63%	290	76%
<b>Totals &amp; Averages</b>	<b>3,715</b>	<b>2,426</b>	<b>65%</b>	<b>3,001</b>	<b>81%</b>

### Grade Distribution

	A		B		C		D		F		W	
Fall 2003	56	14%	96	25%	98	26%	28	9%	19	6%	67	20%
Fall 2004	48	13%	94	24%	117	31%	29	8%	18	5%	68	18%
Fall 2005	46	13%	86	24%	106	29%	26	7%	36	11%	62	17%
Fall 2006	27	8%	81	26%	87	27%	22	7%	33	10%	67	22%
Fall 2007	41	13%	96	25%	86	23%	25	7%	30	8%	86	24%
Spring 2004	52	13%	100	27%	114	29%	30	8%	22	6%	63	16%
Spring 2005	51	14%	111	30%	81	21%	43	12%	30	8%	55	14%
Spring 2006	36	10%	116	31%	100	26%	35	8%	38	10%	56	15%
Spring 2007	52	14%	88	21%	114	29%	27	7%	29	7%	88	22%
Spring 2008	61	16%	80	20%	98	28%	18	5%	30	8%	92	24%

Source: SMCCCD Data Warehouse

## Success and Retention by Ethnicity

		Headcount	Success Count	Success Rate	Retention Count	Retention Rate
2003/04	African American	8	3	38%	5	63%
	Asian	378	267	71%	316	84%
	Filipino	119	76	64%	94	79%
	Hispanic	85	59	69%	70	82%
	Native American	1	1	100%	1	100%
	Other	23	16	70%	19	83%
	White	120	88	73%	101	84%
	Unreported	14	8	57%	12	86%
	<b>Totals &amp; Averages</b>	748	518	69%	618	83%
2004/05	African American	11	4	36%	8	73%
	Asian	349	251	72%	295	85%
	Filipino	133	73	55%	107	80%
	Hispanic	93	58	62%	72	77%
	Other	28	14	50%	22	79%
	White	110	84	76%	97	88%
	Unreported	23	18	78%	21	91%
		<b>Totals &amp; Averages</b>	747	502	67%	622
2005/06	African American	15	6	40%	11	73%
	Asian	332	216	65%	282	85%
	Filipino	114	65	57%	89	78%
	Hispanic	107	73	68%	91	85%
	Native American	3	1	33%	2	67%
	Other	25	17	68%	22	88%
	White	117	88	75%	100	85%
	Unreported	34	24	71%	29	85%
	<b>Totals &amp; Averages</b>	747	490	66%	626	84%
2006/07	African American	23	15	65%	20	87%
	Asian	306	210	69%	255	83%
	Filipino	112	62	55%	75	67%
	Hispanic	111	56	50%	77	69%
	Other	19	11	58%	13	68%
	White	99	70	71%	87	88%
	Unreported	51	27	53%	38	75%
		<b>Totals &amp; Averages</b>	721	451	63%	565
2007/08	African American	15	4	27%	6	40%
	Asian	285	174	61%	218	76%
	Filipino	126	86	68%	93	74%
	Hispanic	115	61	53%	88	77%
	Native American	3	1	33%	3	100%
	Other	12	7	58%	9	75%
	White	146	105	72%	116	79%
	Unreported	50	27	54%	37	74%
	<b>Totals &amp; Averages</b>	752	465	62%	570	76%

Source: SMCCCD Data Warehouse

### Success and Retention by Gender

		Headcount	Success Count	Success Rate	Retention Count	Retention Rate
2003/04	Female	355	242	68%	290	82%
	Male	388	273	70%	323	83%
	Unreported	4	2	50%	4	100%
	<b>Totals &amp; Averages</b>	747	517	69%	617	83%
2004/05	Female	327	223	68%	266	81%
	Male	412	271	66%	348	84%
	Unreported	7	7	100%	7	100%
	<b>Totals &amp; Averages</b>	746	501	67%	621	83%
2005/06	Female	316	231	73%	275	87%
	Male	419	251	60%	343	82%
	Unreported	8	5	63%	5	63%
	<b>Totals &amp; Averages</b>	743	487	66%	623	84%
2006/07	Female	303	168	55%	226	75%
	Male	406	278	68%	331	82%
	Unreported	9	3	33%	5	56%
	<b>Totals &amp; Averages</b>	718	449	63%	562	78%
2007/08	Female	306	176	58%	218	71%
	Male	426	274	64%	336	79%
	Unreported	16	12	75%	13	81%
	<b>Totals &amp; Averages</b>	748	462	62%	567	76%

### Success and Retention by Day/Evening Status

		Headcount	Success Count	Success Rate	Retention Count	Retention Rate
2003/04	Day	437	330	76%	379	87%
	Evening	311	188	60%	239	77%
2004/05	Day	477	338	71%	415	87%
	Evening	270	164	61%	207	77%
2005/06	Day	487	342	70%	416	85%
	Evening	260	148	57%	210	81%
2006/07	Day	460	312	68%	376	82%
	Evening	261	139	53%	189	72%
2007/08	Day	470	318	68%	372	79%
	Evening	282	147	52%	198	70%

Source: SMCCCD Data Warehouse

**Success and Retention by Age**

		Headcount	Success Count	Success Rate	Retention Count	Retention Rate
2003/04	Under 18	9	5	56%	6	67%
	Age 18-22	496	345	70%	416	84%
	Age 23-28	147	93	63%	115	78%
	Age 29-39	77	58	75%	64	83%
	Age 40-49	12	10	83%	10	83%
	Age 50-59	7	7	100%	7	100%
	<b>Totals &amp; Averages</b>	<b>748</b>	<b>518</b>	<b>69%</b>	<b>618</b>	<b>83%</b>
2004/05	Under 18	6	4	67%	6	100%
	Age 18-22	513	348	68%	431	84%
	Age 23-28	152	95	63%	123	81%
	Age 29-39	54	41	76%	46	85%
	Age 40-49	19	14	74%	14	74%
	Age 50-59	3			2	67%
	<b>Totals &amp; Averages</b>	<b>747</b>	<b>502</b>	<b>67%</b>	<b>622</b>	<b>83%</b>
2005/06	Under 18	9	7	78%	8	89%
	Age 18-22	505	338	67%	426	84%
	Age 23-28	152	93	61%	123	81%
	Age 29-39	60	38	63%	50	83%
	Age 40-49	20	13	65%	18	90%
	Age 50-59	1	1	100%	1	100%
	<b>Totals &amp; Averages</b>	<b>747</b>	<b>490</b>	<b>66%</b>	<b>626</b>	<b>84%</b>
2006/07	Under 18	7	6	86%	7	100%
	Age 18-22	494	321	65%	395	80%
	Age 23-28	135	68	50%	96	71%
	Age 29-39	63	38	60%	47	75%
	Age 40-49	19	16	84%	17	89%
	Age 50-59	2	1	50%	2	100%
	Age 60+	1	1	100%	1	100%
	<b>Totals &amp; Averages</b>	<b>721</b>	<b>451</b>	<b>63%</b>	<b>565</b>	<b>78%</b>
2007/08	Under 18	10	8	80%	8	80%
	Age 18-22	492	309	63%	372	76%
	Age 23-28	175	100	57%	130	74%
	Age 29-39	54	34	63%	41	76%
	Age 40-49	14	9	64%	13	93%
	Age 50-59	7	5	71%	6	86%
	<b>Totals &amp; Averages</b>	<b>752</b>	<b>465</b>	<b>62%</b>	<b>570</b>	<b>76%</b>

SMCCCD: Data Warehouse

**Success and Retention by Enrollment Status**

		<b>Headcount</b>	<b>Success Count</b>	<b>Success Rate</b>	<b>Retention Count</b>	<b>Retention Rate</b>
2003/04	Continuing Student	593	421	71%	498	84%
	Currently K-12	7	4	57%	5	71%
	First-Time Student	50	34	68%	39	78%
	First-Time Transfer Student	41	24	59%	31	76%
	Returning Student	41	24	59%	34	83%
	Returning Transfer Student	16	11	69%	11	69%
2004/05	Continuing Student	590	396	67%	487	83%
	Currently K-12	2	2	100%	2	100%
	First-Time Student	63	38	60%	53	84%
	First-Time Transfer Student	41	28	68%	35	85%
	Returning Student	34	25	74%	31	91%
	Returning Transfer Student	17	13	76%	14	82%
2005/06	Continuing Student	578	392	68%	484	84%
	Currently K-12	4	2	50%	3	75%
	First-Time Student	65	38	58%	55	85%
	First-Time Transfer Student	41	23	56%	35	85%
	Returning Student	28	13	46%	22	79%
	Returning Transfer Student	31	22	71%	27	87%
2006/07	Continuing Student	560	361	64%	446	80%
	Currently K-12	2	2	100%	2	100%
	First-Time Student	52	33	63%	39	75%
	First-Time Transfer Student	40	18	45%	24	60%
	Returning Student	36	19	53%	30	83%
	Returning Transfer Student	31	18	58%	24	77%
2007/08	Continuing Student	573	364	64%	437	76%
	Currently K-12	6	6	100%	6	100%
	First-Time Student	45	30	67%	36	80%
	First-Time Transfer Student	59	32	54%	43	73%
	Returning Student	41	20	49%	29	71%
	Returning Transfer Student	28	13	46%	19	68%

Source: SMCCCD Data Warehouse