

Department Productivity: By Year and By Term

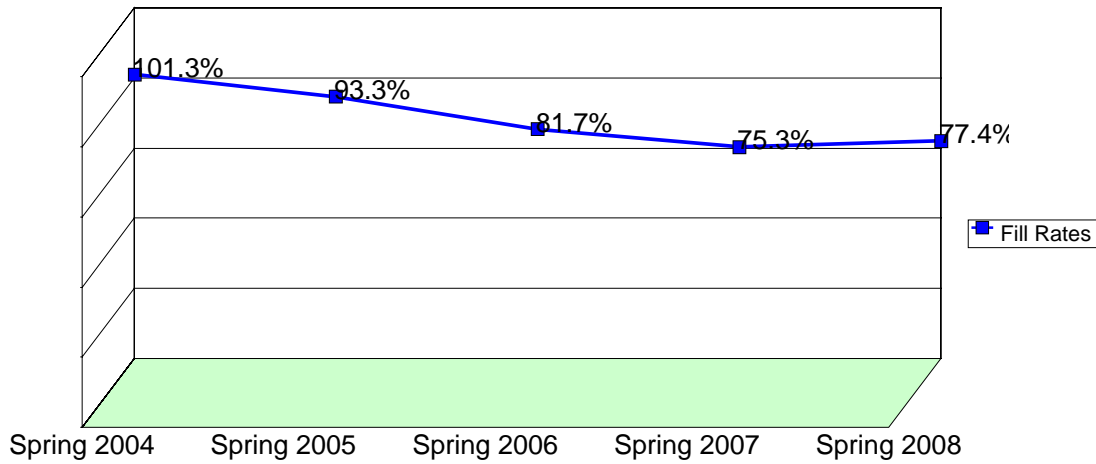
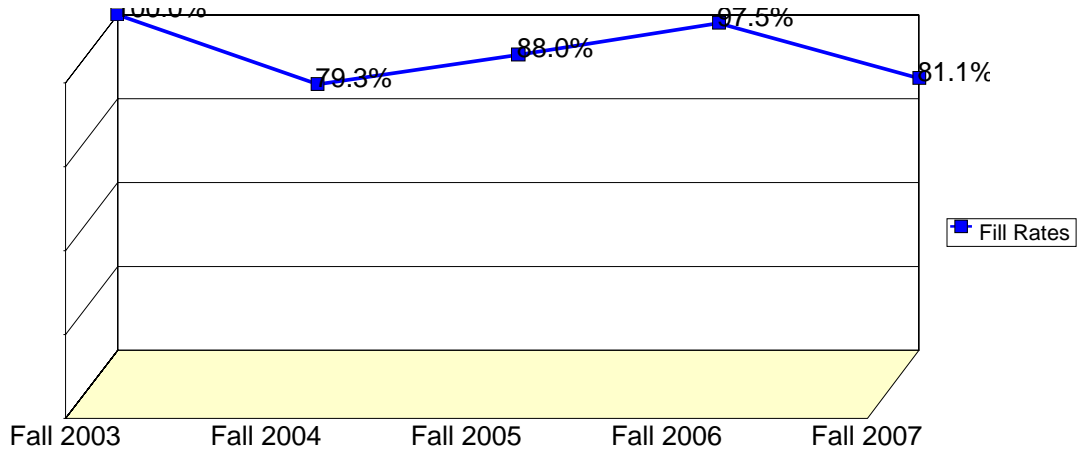
	Census Headcount	End of Term Headcount	FTEF	FTES	WSCH	Load	Sections	Max Enroll
2003/04	1,616	1,407	7.47	155.93	4,678	627	53	1,956
2004/05	1,618	1,387	8.03	154.46	4,634	577	55	2,000
2005/06	1,414	1,203	8.11	140.54	4,216	520	54	1,941
2006/07	1,395	1,182	7.94	137.02	4,111	518	56	2,085
2007/08	1,387	1,143	8.41	142.38	4,272	508	61	2,293

	Census Headcount	End of Term Headcount	FTEF	FTES	WSCH	Load	Sections	Max Enroll
Fall 2003	668	584	2.97	67.03	2,011	678	22	791
Fall 2004	665	555	3.29	65.15	1,954	595	23	840
Fall 2005	637	522	3.51	62.21	1,866	532	24	865
Fall 2006	634	543	3.42	63.44	1,903	557	24	885
Fall 2007	613	515	3.79	60.71	1,821	481	29	1,135
Spring 2004	753	652	3.40	70.29	2,109	620	24	895
Spring 2005	721	623	3.54	67.99	2,040	576	25	910
Spring 2006	598	513	3.60	61.53	1,846	513	24	831
Spring 2007	589	496	3.35	57.11	1,713	511	24	890
Spring 2008	607	481	3.45	66.29	1,989	576	24	853
Summer 2003	195	171	1.10	18.61	558	508	7	270
Summer 2004	232	209	1.20	21.32	640	533	7	250
Summer 2005	179	168	1.00	16.80	504	504	6	245
Summer 2006	172	143	1.17	16.46	494	423	8	310
Summer 2007	167	147	1.17	15.38	462	396	8	305

Source: SMCCCD Data Warehouse

Census Headcount: Number of duplicated headcount at final census.
 End of Term Headcount: Number of duplicated headcount at the end of the term.
 FTEF: Total number of full time equivalent faculty assigned.
 FTES: Total number of full time equivalent students enrolled at first census.
 WSCH: Weekly student contact hours generated by census enrollments.
 Load: The ratio of WSCH to FTEF, used to measure productivity.
 Sections: Total number of sections offered per semester.
 Max Enroll: The enrollment capacity or maximum enrollment as defined in curriculum.

Department Fill Rates by Term



Source: SMCCCD Data Warehouse

*Note: For a list of courses included in this report, see Department Productivity: Term by Course. Interdepartmental crosslisted courses are included in fill rate figures only. Crosslisted courses have been combined to calculate a single fill rate.

Fill Rates: The percent a class fills/enrolls based on capacity or enrollment maximum defined in the curriculum (does not include positive attendance, open entry/open exit, or independent study classes).

Department Productivity: Term by Course

			Census Headcount	End of Term Headcount	FTEF	FTES	WSCH	Load	Sections	Max Enroll Section
Fall 2003 ECE.	201	Child Development	120	105	0.40	12.78	383	958	4	170
	210	ECE. Principles	44	39	0.20	4.43	133	664	1	40
	211	Early Child Ed Curriculum	29	24	0.20	3.09	93	464	1	40
		ECE Curriculum	42	41	0.20	4.62	139	693	1	40
	212	Child, Family & Community	61	54	0.20	6.45	194	968	2	80
	214	Child-Parent Relations	72	62	0.20	7.34	220	1,102	2	80
	241	ECE Admin: Human Relations	46	39	0.20	4.21	126	631	1	40
	242	Adult Supervision in ECE/CD	27	23	0.13	1.70	51	382	1	40
	264	The Life Cycle of the Family	21	17	0.20	2.10	63	315	1	40
	270	Infant/Toddler Child Care	38	36	0.20	4.06	122	609	1	40
	272	Cultural Diversity in ECE	34	31	0.20	3.63	109	544	1	40
	275	Children's Language/Literacy	39	36	0.20	4.29	129	643	1	40
	665	Observation of Young Children	34	20	0.07	0.97	29	437	1	40
	670	Cooperative Education	27	24	0.13	3.37	101	758	1	24
		ECE Cooperative Education	33	32	0.23	3.93	118	506	2	32
690	Special Projects	1	1	0.00	0.07	2	#INF	1	5	
Fall 2004 ECE.	201	Child Development	119	87	0.50	11.90	357	714	4	175
	210	ECE Principles	34	33	0.20	3.74	112	561	1	30
		ECE. Principles	32	25	0.20	3.20	96	480	1	40
	211	Early Child Ed Curriculum	23	20	0.20	2.30	69	345	1	40
		ECE Curriculum	39	37	0.20	4.29	129	643	1	40
	212	Child, Family & Community	74	70	0.20	7.40	222	1,110	2	80
	214	Child-Parent Relations	71	64	0.20	7.10	213	1,065	2	80
	241	ECE Admin: Human Relations	36	28	0.20	3.29	99	494	1	40
	264	The Life Cycle of the Family	37	28	0.20	3.38	101	507	1	40
	270	Infant/Toddler Child Care	33	29	0.20	3.30	99	495	1	40
	272	Cultural Diversity in ECE	23	22	0.20	2.30	69	345	1	40
	275	Children's Language/Literacy	31	25	0.20	3.41	102	511	1	40
	311	Early Child Ed Nutrition	25	22	0.03	0.86	26	772	1	40
	366	Practicum in Early Child. Ed.	24	10	0.22	5.21	156	711	1	30
	665	Observation of Young Children	38	33	0.07	1.43	43	645	1	40
	670	Cooperative Education	13	11	0.20	0.97	29	145	1	24
		ECE Cooperative Education	9	7	0.07	0.67	20	300	1	16
690	Special Projects	4	4	0.00	0.40	12	#INF	1	5	
Fall 2005 ECE.	201	Child Development	104	75	0.40	10.72	322	804	4	180
	210	ECE Principles	29	21	0.20	3.19	96	479	1	30
		ECE. Principles	27	23	0.20	2.70	81	405	1	40
	211	Early Child Ed Curriculum	21	18	0.20	2.10	63	315	1	40
		ECE Curriculum	31	29	0.20	3.10	93	465	1	40
	212	Child, Family & Community	57	48	0.20	5.70	171	855	2	80
	214	Child-Parent Relations	90	83	0.20	9.52	286	1,428	2	80
	223	Infant/Toddler Development	30	26	0.20	3.00	90	450	1	40
	241	ECE Admin: Human Relations	37	29	0.20	3.38	101	507	1	40
	242	Adult Supervision in ECE/CD	21	17	0.19	1.32	40	207	1	35
	264	The Life Cycle of the Family	32	29	0.20	2.93	88	439	1	40

		Census Headcount	End of Term Headcount	FTEF	FTES	WSCH	Load	Sections	Max Enroll Section	
	272	Cultural Diversity in ECE	23	22	0.20	2.30	69	345	1	40
	275	Children's Language/Literacy	23	19	0.20	2.30	69	345	1	40
	311	Children's Nutrition	26	20	0.03	0.89	27	803	1	40
	333	Observation of Children	31	15	0.20	2.83	85	425	1	35
	366	Practicum in Early Child. Ed.	18	15	0.22	2.69	81	367	1	20
	670	Cooperative Education	27	24	0.20	2.80	84	420	1	24
		ECE Cooperative Education	6	5	0.07	0.50	15	225	1	16
	690	Special Projects	4	4	0.00	0.23	7	#INF	1	5
Fall 2006 ECE.	201	Child Development	117	92	0.50	12.13	364	728	5	220
	210	ECE Principles	26	24	0.20	2.86	86	429	1	30
		ECE. Principles	17	15	0.20	1.70	51	255	1	40
	211	Early Child Ed Curriculum	21	17	0.20	2.10	63	315	1	40
		ECE Curriculum	27	26	0.20	2.97	89	446	1	40
	212	Child, Family & Community	66	59	0.20	6.97	209	1,046	2	80
	214	Child-Parent Relations	64	57	0.20	6.78	203	1,017	2	80
	223	Infant/Toddler Development	40	35	0.20	4.40	132	660	1	40
	241	ECE Admin: Human Relations	37	32	0.20	3.38	101	507	1	40
	242	Adult Supervision in ECE/CD	20	16	0.13	1.26	38	283	1	35
	262	Intro. to Family Support: BRP	25	19	0.20	2.29	69	343	1	40
	333	Observation of Children	20	17	0.20	2.00	60	300	1	35
	335	Handling Behavior	44	35	0.20	4.84	145	726	1	40
	366	Practicum in Early Child. Ed.	19	17	0.22	3.75	113	511	1	20
	665	Communicating w/Parents	19	15	0.07	0.65	20	293	1	40
		ECERS Training	30	29	0.07	0.91	27	411	1	40
	670	ECE Cooperative Education	37	34	0.23	4.13	124	532	1	20
	690	Special Projects	5	4	0.00	0.32	10	#INF	1	5
Fall 2007 ECE.	201	Child Development	125	87	0.50	12.95	389	777	5	220
	210	ECE Principles	25	20	0.20	2.50	75	375	1	30
		ECE. Principles	37	30	0.20	4.19	126	629	1	40
	211	ECE Curriculum	42	33	0.20	4.20	126	630	1	40
	212	Child, Family & Community	45	40	0.20	5.02	151	753	2	80
	214	Child-Parent Relations	40	34	0.20	4.23	127	635	2	80
	223	Infant/Toddler Development	20	15	0.20	2.20	66	330	1	40
	241	ECE Admin: Human Relations	28	24	0.20	2.56	77	384	1	40
	242	Adult Supervision in ECE/CD	23	19	0.13	1.58	47	355	1	35
	260	Children with Special Needs	17	14	0.20	1.87	56	281	1	40
	272	Cultural Diversity in ECE	17	17	0.20	1.70	51	255	1	40
	275	Children's Language/Literacy	15	11	0.20	1.65	50	248	1	40
	311	Children's Nutrition	13	13	0.03	0.45	13	402	1	40
	335	Handling Behavior	23	22	0.20	2.30	69	345	1	40
	366	Practicum in Early Child. Ed.	34	30	0.42	7.87	236	562	2	40
	665Si	Male Involvement	10	10	0.07	0.29	9	130	1	35
	665Sf	Advanced ECERS Training	8	8	0.07	0.21	6	96	1	35
	665Sf	Lang., Culture & Parent Engage	52	53	0.07	1.25	37	562	1	150
	665Sc	Facilitative Leadership	3	3	0.07	0.06	2	27	1	35
	670	Cooperative Education	7	6	0.07	0.57	17	255	1	10
		ECE Cooperative Education	24	21	0.17	2.83	85	510	1	20
	690	Special Projects	5	5	0.00	0.23	7	#INF	1	5

				Census Headcount	End of Term Headcount	FTEF	FTES	WSCH	Load	Sections	Max Enroll Section
Spring 2004	ECE.	201	Child Development	99	75	0.40	9.90	297	743	4	155
		210	Early Child Ed Principles	47	42	0.20	4.70	141	705	1	40
			ECE Principles	37	34	0.20	3.70	111	555	1	40
		211	Early Child Ed Curriculum	38	33	0.20	3.80	114	570	1	40
			ECE Curriculum	45	44	0.20	4.95	149	743	1	40
		212	Child, Family & Community	73	63	0.20	7.30	219	1,095	2	80
		214	Child-Parent Relations	63	59	0.20	6.30	189	945	2	80
		240	ECE Admin: Bus/Legal	43	33	0.20	3.93	118	590	1	40
		242	Adult Supervision in ECE/CD	23	20	0.13	1.45	43	325	1	40
		260	Children with Special Needs	35	22	0.20	3.85	116	578	1	40
		262	Intro. Family Support: BRP	20	19	0.20	2.00	60	300	1	40
		270	Infant/Toddler Child Care	44	40	0.20	4.40	132	660	1	40
		272	Cultural Diversity in ECE	34	28	0.20	3.40	102	510	1	40
		275	Children's Language/Literacy	20	19	0.20	2.33	70	350	1	40
		311	Early Child Ed Nutrition	39	37	0.03	0.88	27	796	1	40
		665	Observation of Young Children	37	29	0.07	1.13	34	507	1	45
		670	Cooperative Education	52	51	0.37	5.87	176	480	2	50
690	Special Projects	4	4	0.00	0.40	12	#INF	1	5		
Spring 2005	ECE.	201	Child Development	111	97	0.40	10.79	324	809	4	160
		210	Early Child Ed Principles	30	29	0.20	3.00	90	450	1	40
			ECE Principles	43	40	0.20	4.30	129	645	1	40
		211	Early Child Ed Curriculum	27	24	0.20	2.70	81	405	1	35
			ECE Curriculum	36	33	0.20	3.60	108	540	1	40
		212	Child, Family & Community	66	57	0.20	6.60	198	990	2	80
		214	Child-Parent Relations	70	64	0.20	7.00	210	1,050	2	80
		225	Infant/Toddler Environments	38	33	0.20	3.80	114	570	1	40
		240	ECE Admin: Bus/Legal	38	32	0.12	3.47	104	869	1	40
		242	Adult Supervision in ECE/CD	17	14	0.13	1.07	32	240	1	40
		260	Children with Special Needs	41	35	0.20	4.51	135	677	1	40
		262	Intro. to Family Support: BRP	39	21	0.20	3.57	107	535	1	40
		272	Cultural Diversity in ECE	18	17	0.20	1.80	54	270	1	40
		275	Children's Language/Literacy	23	21	0.20	2.30	69	345	1	40
		311	Early Child Ed Nutrition	15	12	0.03	0.51	15	463	1	40
		366	Practium in ECE	16	12	0.22	2.59	78	353	1	15
		665	Observation of Young Children	42	35	0.07	1.28	38	576	1	45
670	Cooperative Education	46	45	0.37	4.73	142	387	2	50		
690	Special Projects	5	2	0.00	0.37	11	#INF	1	5		
Spring 2006	ECE.	201	Child Development	111	93	0.40	11.40	342	855	4	176
		210	Early Child Ed Principles	16	14	0.20	1.60	48	240	1	40
			ECE Principles	35	29	0.20	3.50	105	525	1	40
		211	Early Child Ed Curriculum	22	20	0.20	2.20	66	330	1	35
			ECE Curriculum	24	20	0.20	2.40	72	360	1	40
		212	Child, Family & Community	69	61	0.20	6.90	207	1,035	2	80
		214	Child-Parent Relations	54	48	0.20	5.40	162	810	2	80
		225	Infant/Toddler Environments	32	29	0.20	3.20	96	480	1	40
		240	ECE Admin: Bus/Legal	53	39	0.20	4.85	145	727	1	40

		Census Headcount	End of Term Headcount	FTEF	FTES	WSCH	Load	Sections	Max Enroll Section				
		260	Children with Special Needs	29	25	0.20	3.19	96	479	1	40		
		272	Cultural Diversity in ECE	22	22	0.20	2.20	66	330	1	40		
		275	Children's Language/Literacy	21	16	0.20	2.10	63	315	1	40		
		333	Observational Skills	11	10	0.20	1.10	33	165	1	30		
		335	Handling Behavior	26	21	0.20	2.60	78	390	1	35		
		366	Practium in ECE	13	11	0.23	2.22	67	286	1	15		
		670	Cooperative Education	53	48	0.37	6.23	187	510	2	50		
		690	Research Project	2	2	0.00	0.13	4	#INF	1	5		
			Special Projects	5	5	0.00	0.30	9	#INF	1	5		
Spring 2007	ECE.	201	Child Development	85	58	0.40	9.08	273	681	4	180		
		210	Early Child Ed Principles	34	28	0.20	3.40	102	510	1	40		
			ECE Principles	34	32	0.20	3.40	102	510	1	40		
		211	Early Child Ed Curriculum	31	27	0.20	3.10	93	465	1	40		
			ECE Curriculum	28	27	0.20	3.08	92	462	1	40		
		212	Child, Family & Community	60	57	0.20	6.00	180	900	2	80		
		214	Child-Parent Relations	48	44	0.20	4.80	144	720	2	80		
		225	Infant/Toddler Environments	36	25	0.20	3.29	99	494	1	40		
		240	ECE Admin: Bus/Legal	20	19	0.20	2.00	60	300	1	40		
		260	Children with Special Needs	25	22	0.20	2.75	83	413	1	40		
		264	The Life Cycle of the Family	35	31	0.20	3.20	96	480	1	40		
		272	Cultural Diversity in ECE	16	16	0.20	1.60	48	240	1	40		
		335	Handling Behavior	30	25	0.20	3.00	90	450	1	40		
		366	Practium in ECE	21	17	0.22	3.69	111	503	1	15		
		665S/	ECERS	15	13	0.07	0.51	15	231	1	40		
		665S/	Communicating with Parents	35	22	0.07	0.61	18	274	1	40		
		670	Cooperative Education	32	30	0.20	3.37	101	505	2	50		
		690	Research Project	4	3	0.00	0.23	7	#INF	1	5		
		Spring 2008	ECE.	191	Children's Literature I	16	12	0.10	1.60	48	480	1	32
				201	Child Development	101	68	0.40	10.84	325	813	4	180
210	Early Child Ed Principles			24	17	0.20	2.40	72	360	1	40		
	ECE Principles			34	26	0.20	3.40	102	510	1	40		
211	Early Child Ed Curriculum			27	25	0.20	2.70	81	405	1	40		
	ECE Curriculum			45	38	0.20	4.95	149	743	1	40		
212	Child, Family & Community			63	58	0.20	6.30	189	945	2	80		
214	Child-Parent Relations			59	54	0.20	5.90	177	885	2	80		
225	Infant/Toddler Environments			21	13	0.20	2.02	60	302	1	40		
240	ECE Admin: Bus/Legal			29	25	0.20	2.78	84	418	1	40		
241	ECE Admin: Human Relations			16	12	0.20	1.60	48	240	1	35		
260	Children with Special Needs			37	20	0.20	3.55	107	533	1	40		
335	Handling Behavior			32	24	0.20	3.20	96	480	1	40		
366	Practicum in Early Child. Ed.			18	17	0.20	6.25	188	938	1	16		
	Practicum in ECE			15	13	0.22	5.32	160	726	1	15		
665S/	Communicating with Parents			37	31	0.07	0.00	0	0	1	40		
670	Cooperative Education			29	26	0.27	3.20	96	360	2	50		
690	Research Project			4	2	0.00	0.27	8	#INF	1	5		
Summer 2003	ECE.			201	Child Development	31	28	0.10	3.26	98	978	1	45
				210	Early Child Ed Principles	32	27	0.20	3.22	97	483	1	35
		211	Early Child Ed Curriculum	33	32	0.20	3.32	100	498	1	35		

		Census Headcount	End of Term Headcount	FTEF	FTES	WSCH	Load	Sections	Max Enroll Section		
	212	Child, Family & Community	30	26	0.20	3.02	91	453	1	35	
	214	Child-Parent Relations	38	31	0.20	3.82	115	573	1	35	
	242	Adult Supervision in ECE/CD	29	27	0.13	1.86	56	418	1	35	
	670	Early Childhood Coop. Ed.	2	0	0.07	0.12	4	55	1	50	
Summer 2004	ECE.	201	Child Development	28	21	0.10	2.82	85	846	1	45
		210	Early Child Ed Principles	36	32	0.20	3.62	109	543	1	40
		211	Early Child Ed Curriculum	41	38	0.20	3.87	116	580	1	40
		212	Child, Family & Community	36	33	0.20	3.62	109	543	1	35
		214	Child-Parent Relations	39	37	0.20	3.68	110	552	1	35
		242	Adult Supervision in ECE/CD	32	31	0.13	1.95	59	439	1	35
		670	Cooperative Education	20	17	0.17	1.77	53	318	1	20
Summer 2005	ECE.	201	Child Development	47	45	0.20	4.55	137	683	2	85
		210	Early Child Ed Principles	38	36	0.20	3.47	104	521	1	40
		211	Early Child Ed Curriculum	38	37	0.20	3.58	107	537	1	40
		212	Child, Family & Community	31	27	0.20	2.83	85	425	1	40
		214	Child-Parent Relations	25	23	0.20	2.36	71	354	1	40
Summer 2006	ECE.	201	Child Development	58	49	0.30	5.66	170	566	3	130
		210	Early Child Ed Principles	23	20	0.20	2.26	68	339	1	40
		211	Early Child Ed Curriculum	27	27	0.20	2.65	80	398	1	40
		212	Child, Family & Community	25	21	0.20	2.46	74	369	1	40
		214	Child-Parent Relations	17	17	0.20	1.67	50	251	1	40
		670	Cooperative Education	22	9	0.07	1.77	53	795	1	20
Summer 2007	ECE.	201	Child Development	51	42	0.30	4.83	145	483	3	130
		210	Early Child Ed Principles	27	24	0.20	2.49	75	373	1	40
		211	Early Child Ed Curriculum	29	28	0.20	2.67	80	401	1	40
		212	Child, Family & Community	36	31	0.20	3.32	100	498	1	40
		214	Child-Parent Relations	15	14	0.20	1.41	42	212	1	35
		670	Cooperative Education	9	8	0.07	0.67	20	300	1	20