

Department Productivity: By Year and By Term

DSP&S Department
2003/04 to 2007/08

	Census Headcount	End of Term Headcount	FTEF	FTES	WSCH	Load	Sections	Max Enroll
2003/04	419	371	1.65	18.55	556	337	25	546
2004/05	531	477	3.12	25.90	777	249	36	646
2005/06	548	505	3.93	33.40	1,002	255	41	719
2006/07	627	591	4.18	45.06	1,352	323	48	843
2007/08	393	380	2.41	13.73	412	171	37	536

	Census Headcount	End of Term Headcount	FTEF	FTES	WSCH	Load	Sections	Max Enroll
Fall 2003	202	175	0.86	10.67	320	372	12	274
Fall 2004	258	228	1.52	12.80	384	253	18	323
Fall 2005	272	250	1.93	18.42	553	286	18	349
Fall 2006	275	260	1.90	25.84	775	409	22	336
Fall 2007	178	174	0.84	6.57	197	236	15	240
Spring 2004	172	157	0.64	6.34	190	296	11	218
Spring 2005	214	195	1.45	11.35	340	235	16	263
Spring 2006	224	203	1.85	13.14	394	213	21	310
Spring 2007	218	201	1.52	13.96	419	276	18	297
Spring 2008	126	119	1.24	3.84	115	93	18	191
Summer 2003	45	39	0.15	1.54	46	307	2	54
Summer 2004	59	54	0.15	1.76	53	352	2	60
Summer 2005	52	52	0.15	1.84	55	368	2	60
Summer 2006	134	130	0.77	5.26	158	205	8	210
Summer 2007	89	87	0.33	3.31	99	302	4	105

Source: SMCCCD Data Warehouse

*Note: Fill rates are not available because most sections were positive attendance.

Census Headcount: Number of duplicated headcount at final census.

End of Term Headcount: Number of duplicated headcount at the end of the term.

FTEF: Total number of full time equivalent faculty assigned.

FTES: Total number of full time equivalent students enrolled at first census.

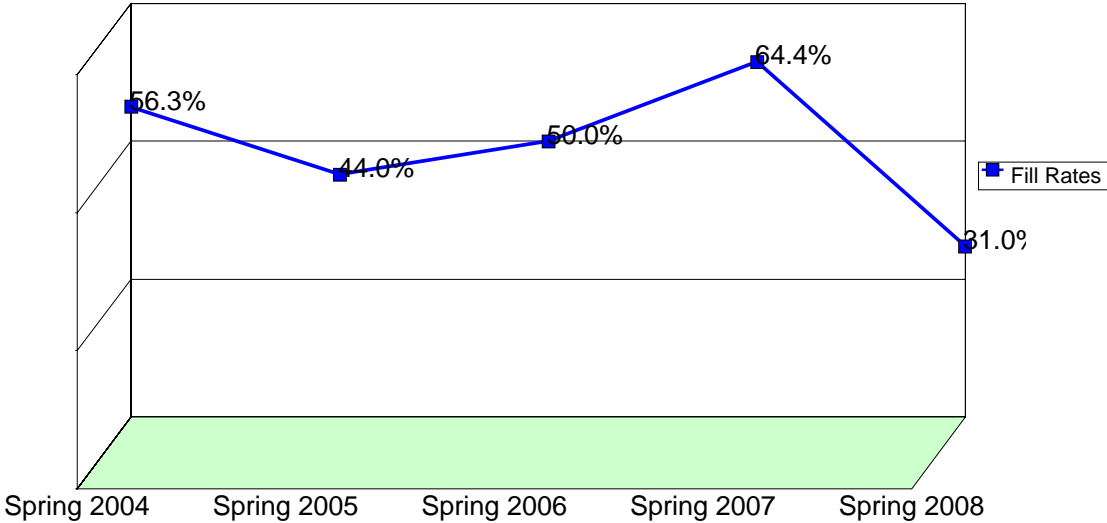
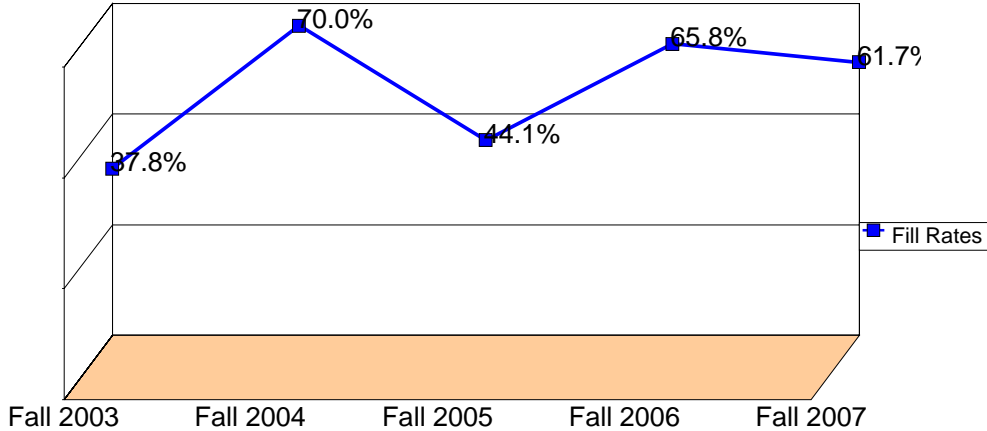
WSCH: Weekly student contact hours generated by census enrollments.

Load: The ratio of WSCH to FTEF, used to measure productivity.

Sections: Total number of sections offered per semester

Max Enroll: The enrollment capacity or maximum enrollment as defined in curriculum.

Department Fill Rates By Term



Source: SMCCCD Data Warehouse