

## Department Productivity: By Year and By Term

	Census Headcount	End of Term Headcount	FTEF	FTES	WSCH	Load	Sections	Max Enroll
2003/04	736	565	3.20	<b>84.04</b>	2,521	788	19	920
2004/05	596	457	3.27	<b>63.16</b>	1,895	579	20	935
2005/06	525	416	3.12	<b>57.69</b>	1,731	554	19	849
2006/07	742	596	3.22	<b>78.29</b>	2,349	728	26	1,059
2007/08	988	785	4.17	<b>94.59</b>	2,838	680	37	1,264

	Census Headcount	End of Term Headcount	FTEF	FTES	WSCH	Load	Sections	Max Enroll
Fall 2003	240	187	1.20	<b>29.58</b>	887	740	7	320
Fall 2004	243	185	1.27	<b>26.61</b>	798	626	8	355
Fall 2005	213	159	1.20	<b>24.93</b>	748	623	8	365
Fall 2006	239	193	1.27	<b>30.28</b>	908	712	9	420
Fall 2007	368	271	1.70	<b>35.17</b>	1,055	621	14	485
Spring 2004	346	273	1.70	<b>42.27</b>	1,268	746	9	445
Spring 2005	293	226	1.85	<b>33.76</b>	1,013	547	10	495
Spring 2006	284	233	1.85	<b>31.40</b>	942	509	10	449
Spring 2007	365	286	1.57	<b>41.68</b>	1,250	794	13	479
Spring 2008	395	337	2.02	<b>48.69</b>	1,461	721	16	549
Summer 2003	150	105	0.30	<b>12.19</b>	366	1,219	3	155
Summer 2004	60	46	0.15	<b>2.80</b>	84	559	2	85
Summer 2005	28	24	0.08	<b>1.35</b>	40	540	1	35
Summer 2006	138	117	0.38	<b>6.34</b>	190	507	4	160
Summer 2007	225	177	0.45	<b>10.73</b>	322	715	7	230

Source: SMCCCD Data Warehouse

Census Headcount: Number of duplicated headcount at final census.

End of Term Headcount: Number of duplicated headcount at the end of the term.

FTEF: Total number of full time equivalent faculty assigned.

FTES: Total number of full time equivalent students enrolled at first census.

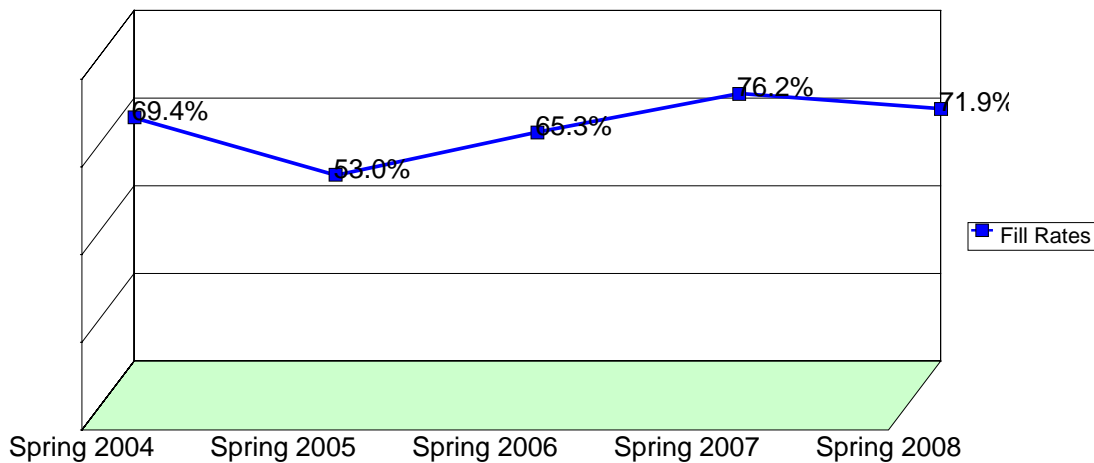
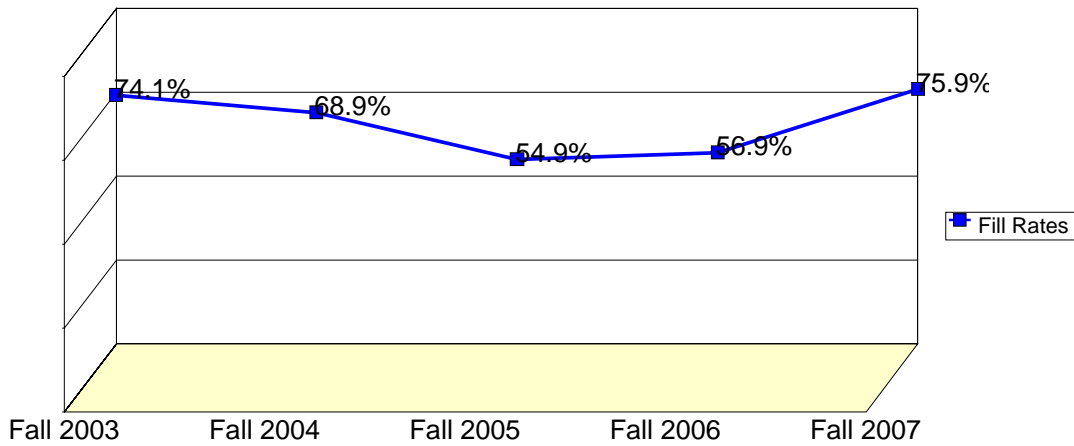
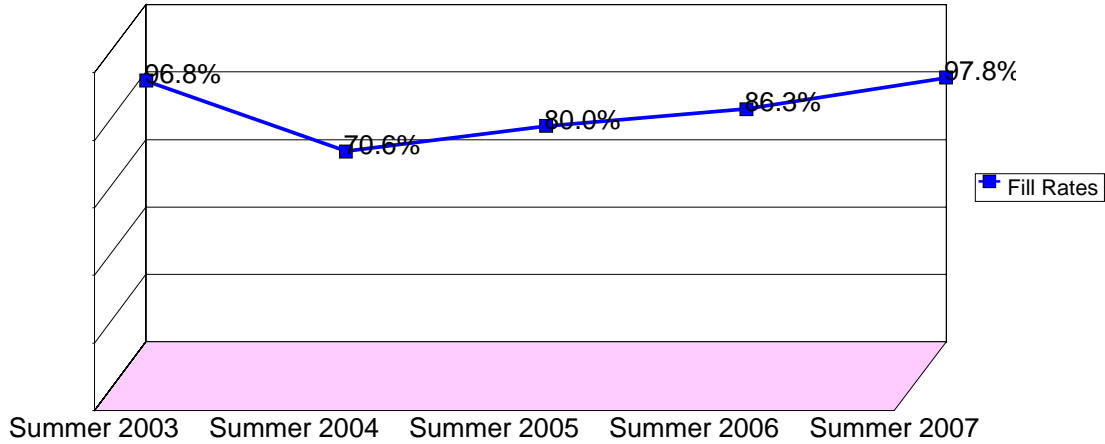
WSCH: Weekly student contact hours generated by census enrollments.

Load: The ratio of WSCH to FTEF, used to measure productivity.

Sections: Total number of sections offered per semester.

Max Enroll: The enrollment capacity or maximum enrollment as defined in curriculum.

### Department Fill Rates by Term



Source: SMCCCD Data Warehouse

\*Note: For a list of courses included in this report, see Department Productivity: Term by Course. Interdepartmental crosslisted courses are included in fill rate figures only. Crosslisted courses have been combined to calculate a single fill rate.

Fill Rates: The percent a class fills/enrolls based on capacity or enrollment maximum defined in the curriculum (does not include positive attendance, open entry/open exit, or independent study classes).

## Department Productivity: Term by Course

				Census Headcount	End of Term Headcount	FTEF	FTES	WSCH	Load	Sections	Max Enroll
<b>Fall 2003</b>	DANC	140	Ballet	21	18	0.15	2.80	84	560	1	35
		330	Creative Dance	18	15	0.15	2.40	72	480	1	35
		350	Aerobic Dance	91	77	0.30	12.13	364	1,213	2	110
		400	Dance Production	40	34	0.30	2.91	87	291	1	50
		665	Afro-Brazilian Dance Workout	21	17	0.15	2.80	84	560	1	40
			Salsa	49	26	0.15	6.53	196	1,307	1	50
<b>Fall 2004</b>	DANC	330	Creative Dance	26	21	0.15	3.47	104	693	1	35
		350	Aerobic Dance	63	49	0.30	8.40	252	840	2	100
		400	Dance Production	33	24	0.30	1.87	56	187	1	50
		665	Afro-Brazilian Dance Workout	23	15	0.15	3.07	92	613	1	40
			Argentine Tango	31	29	0.15	3.93	118	785	1	50
			Ballroom	20	16	0.08	1.33	40	533	1	35
			Salsa	47	31	0.15	4.54	136	909	1	45
<b>Fall 2005</b>	DANC	330	Creative Dance	19	13	0.15	2.53	76	507	1	35
		350	Aerobic Dance	73	56	0.45	9.73	292	649	3	150
		400	Dance Production	40	30	0.30	2.59	78	259	1	50
		665	Argentine Tango	25	17	0.00	3.25	98	#INF	1	50
			Ballroom	15	13	0.15	1.50	45	300	1	35
			Salsa	41	30	0.15	5.33	160	1,066	1	45
<b>Fall 2006</b>	DANC	161	Tango Argentino	32	27	0.15	4.48	134	896	1	40
		162	Tango Milonga	50	50	0.15	7.00	210	1,400	1	80
		330	Creative Dance	21	17	0.15	2.94	88	588	1	35
		350	Aerobic Dance	64	51	0.45	8.24	247	549	3	135
		665	Chinese Dance	21	20	0.15	2.10	63	420	1	45
			Flamenco Dance	18	7	0.08	0.90	27	360	1	40
			Salsa	33	21	0.15	4.62	139	924	1	45
<b>Fall 2007</b>	DANC	130	Jazz Dance I	34	22	0.15	3.40	102	680	1	40
		162	Tango Milonga	23	20	0.15	3.22	97	644	1	40
		163	Tango Buenos Aires	23	21	0.15	2.30	69	460	1	25
		167	Swing Dance I	23	19	0.05	2.30	69	1,380	1	50
		168	Swing Dance II	2	2	0.05	0.20	6	120	1	50
		169	Swing Dance III	3	3	0.05	0.30	9	180	1	50
		350	Aerobic Dance	32	22	0.15	4.48	134	896	1	45
			Cardio Dance	41	30	0.15	4.10	123	820	1	45
		390	Dance Composition/Theory/Chore	14	13	0.20	1.40	42	210	1	20
		665S	Flamenco Dance	28	14	0.08	1.28	38	512	1	40
		665S	Salsa	56	30	0.08	2.69	81	1,075	1	50
		665S	Roots of Salsa	36	29	0.15	3.60	108	720	1	50
		665S	Chinese Dance	17	15	0.15	1.70	51	340	1	30
665S	Beginning Ballroom Dance	36	31	0.15	4.20	126	840	1	50		

				Dance Department 2003/04 to 2007/08							
				Census	End of	FTEF	FTES	WSCH	Load	Sections	Max
				Headcount	Term						Enroll
<b>Spring 2004</b>	DANC	110	Modern Dance	17	17	0.15	2.27	68	453	1	30
		350	Aerobic Dance	87	74	0.30	11.60	348	1,160	2	150
		390	Dance Composition/Theory/Chore	21	18	0.20	2.10	63	315	1	40
		400	Dance Production	58	52	0.30	5.60	168	560	1	45
		440	Dance Company/Arts Prog. Mgmt.	38	38	0.30	4.85	145	485	1	40
		665	Afro - Brazilian	31	21	0.15	4.13	124	827	1	40
			Argentine Tango	39	32	0.15	4.94	148	988	1	50
			Salsa	55	21	0.15	6.78	204	1,357	1	50
<b>Spring 2005</b>	DANC	110	Modern Dance	22	16	0.15	2.93	88	587	1	30
		350	Aerobic Dance	72	56	0.30	9.60	288	960	2	150
		390	Dance Composition/Theory/Chore	11	10	0.20	1.10	33	165	1	40
		400	Dance Production	55	48	0.30	4.80	144	480	1	45
		440	Dance Company/Arts Prog. Mgmt.	26	22	0.30	2.66	80	266	1	50
		665	Afro Brazilian	19	16	0.15	2.53	76	507	1	50
			Argentine Tango	26	22	0.15	2.34	70	468	1	40
			Salsa	48	24	0.15	5.92	178	1,184	1	50
			Swing	14	12	0.15	1.87	56	373	1	40
<b>Spring 2006</b>	DANC	161	Tango Argentino	41	34	0.15	3.83	115	765	1	40
		162	Tango Milonga	36	35	0.15	3.36	101	672	1	40
		350	Aerobic Dance	62	57	0.30	8.27	248	827	2	100
		390	Dance Composition/Theory/Chore	15	12	0.20	1.50	45	225	1	40
		400	Dance Production	36	28	0.30	2.90	87	290	1	45
		440	Dance Company/Arts Prog. Mgmt.	17	17	0.30	2.16	65	216	1	50
		665	Afro Brazilian	22	14	0.15	2.93	88	587	1	40
			Salsa	41	22	0.15	5.06	152	1,011	1	54
			Swing	14	14	0.15	1.40	42	280	1	40
<b>Spring 2007</b>	DANC	140	Ballet	24	19	0.15	2.40	72	480	1	25
		161	Tango Argentino	54	47	0.15	5.40	162	1,080	1	60
		162	Tango Milonga	32	31	0.15	3.20	96	640	1	40
		163	Tango Buenos Aires	25	25	0.15	2.50	75	500	1	25
		350	Aerobic Dance	60	41	0.30	6.91	207	691	2	70
		665S	Flamenco	9	4	0.08	0.48	14	192	1	40
		665S	Salsa	39	18	0.15	5.59	168	1,118	1	54
		665S	Roots of Salsa	24	20	0.15	3.36	101	672	1	40
		665S	Afro/Brazilian Dance Workout	29	22	0.15	4.35	131	870	1	40
		665S	Chinese Dance	21	18		3.01	90		1	45
		665S	Beginning Ballroom	32	27	0.08	2.99	90	1,195	1	40
		665S	Introduction to Swing Dancing	16	14	0.08	1.49	45	597	1	40
		<b>Spring 2008</b>	DANC	140	Ballet	26	23	0.15	3.64	109	728
152	Cuban Roots of Salsa			42	34	0.15	4.20	126	840	1	40
162	Tango Milonga			25	25	0.15	2.50	75	500	1	40
163	Tango Buenos Aires			22	20	0.15	2.20	66	440	1	25
167	Swing Dance I			44	36	0.05	4.40	132	2,640	1	60
168	Swing Dance II			4	4	0.05	0.40	12	240	1	60

		Dance Department 2003/04 to 2007/08									
		Census Headcount	End of Term Headcount	FTEF	FTES	WSCH	Load	Sections	Max Enroll		
	169	Swing Dance III	2	2	0.05	0.20	6	120	1	60	
	350	Cardio Dance	90	79	0.45	12.41	372	828	3	110	
	665S	Flamenco	13	9	0.08	1.17	35	468	1	40	
	665S	Salsa	39	25	0.15	5.46	164	1,092	1	54	
	665	Chinese Dance SE	32	30	0.30	4.48	134	448	2	60	
	665S	Beginning Ballroom	32	26	0.15	4.27	128	853	1	40	
	665S	Filipino Dance	24	24	0.15	3.36	101	672	1	45	
<b>Summer 2003</b>	DANC	350	Aerobic Dance	123	82	0.22	10.95	329	1,460	2	120
		665	Argentine Tango	27	23	0.08	1.23	37	494	1	35
<b>Summer 2004</b>	DANC	665	Argentine Tango	38	29	0.08	1.74	52	695	1	50
			Swing Dance	22	17	0.08	1.06	32	424	1	35
<b>Summer 2005</b>	DANC	665	Ballroom Dance	28	24	0.08	1.35	40	540	1	35
<b>Summer 2006</b>	DANC	161	Tango Argentino	48	39	0.08	2.19	66	878	1	40
		162	Tango Milonga	50	47	0.08	2.31	69	926	1	40
		665	Afro/Brazilian Dance Workout	21	16	0.08	0.96	29	384	1	40
			Chinese Dance	19	15	0.15	0.87	26	174	1	40
<b>Summer 2007</b>	DANC	161	Tango Argentino	59	46	0.08	2.70	81	1,079	1	60
		162	Tango Milonga	32	28	0.08	1.49	45	597	1	25
		163	Tango Buenos Aires	30	25	0.08	1.37	41	549	1	25
		167	Swing Dance I	23	20	0.04	1.19	36	953	1	40
		665S	Flamenco Dance	28	13	0.08	1.28	38	512	1	40
		665S	Afro/Brazilian Dance Workout	32	26	0.08	1.61	48	644	1	40
		665	Beginning Ballroom Dance SF	21	19	0.04	1.09	33	870	1	40

Source: SMCCCD Data Warehouse

\*Note: Courses are sorted by crosslist group code. Interdepartmental crosslisted courses are included in fill rate figures only.

Census Headcount: Number of duplicated headcount at final census.

End of Term Headcount: Number of duplicated headcount at the end of the term.

FTEF: Total number of full time equivalent faculty assigned.

FTES: Total number of full time equivalent students enrolled at first census.

WSCH: Weekly student contact hours generated by census enrollments.

Load: The ratio of WSCH to FTEF, used to measure productivity.

Sections: Total number of sections offered per semester.

Max Enroll: The enrollment capacity or maximum enrollment as defined in curriculum.