

Department Enrollment

Enrollment by Term

FA03	FA04	FA05	FA06	FA07	SP04	SP05	SP06	SP07	SP08	SU03	SU04	SU05	SU06	SU07
2,322	1,574	2,896	968	999	899	1,939	1,835	687	838	887	798	537	97	149

Enrollment by Gender

	2003/04		2004/05		2005/06		2006/07		2007/08		Change 06/07-07/08	5 Year Row Total & Average	
Female	1,968	52%	1,975	54%	2,144	52%	811	51%	856	49%	6%	7,754	52%
Male	1,757	47%	1,635	45%	1,876	46%	705	47%	801	49%	14%	6,774	47%
Unreported	27	1%	40	1%	62	2%	20	1%	36	2%	80%	185	1%
Column Total	3,752	100%	3,650	100%	4,082	100%	1,536	100%	1,693	100%	10%	14,713	100%

Enrollment by Ethnicity

	2003/04		2004/05		2005/06		2006/07		2007/08		Change 06/07-07/08	5 Year Row Total & Average	
African American	216	5%	234	5%	238	5%	139	8%	145	8%	4%	972	6%
Asian	1127	28%	1038	25%	1419	27%	379	22%	446	22%	18%	4409	25%
Filipino	811	20%	863	20%	1005	19%	269	16%	305	16%	13%	3253	19%
Hispanic	940	22%	1043	24%	1236	23%	487	27%	531	27%	9%	4237	24%
Native American	16	0%	16	0%	28	0%	10	0%	15	1%	50%	85	0%
Other	122	3%	148	4%	184	4%	42	2%	52	3%	24%	548	3%
White	750	18%	806	18%	882	16%	320	17%	349	17%	9%	3107	17%
Unreported	126	3%	163	4%	276	5%	106	7%	143	8%	35%	814	5%
Column Total	4108	100%	4311	100%	5268	100%	1752	100%	1986	100%	13%	17425	100%

Enrollment by Age

	2003/04		2004/05		2005/06		2006/07		2007/08		Change 06/07-07/08	5 Year Row Total & Average	
Under 18	234	6%	157	4%	173	4%	116	9%	111	9%	-4%	791	6%
Age 18-22	2,260	62%	2,143	62%	2,456	64%	926	63%	998	63%	8%	8,783	63%
Age 23-28	644	18%	684	19%	756	18%	236	15%	274	13%	16%	2,594	17%
Age 29-39	393	9%	415	9%	449	9%	148	8%	187	9%	26%	1,592	9%
Age 40-49	187	4%	186	4%	220	4%	71	3%	89	4%	25%	753	4%
Age 50-59	61	1%	87	2%	82	1%	35	2%	44	2%	26%	309	2%
Age 60+	12	0%	11	0%	12	0%	15	1%	10	1%	-33%	60	0%
Column Total	3,791	100%	3,683	100%	4,148	100%	1,547	100%	1,713	100%	11%	14,882	100%

Source: SMCCCD Data Warehouse

*Note: Counts and percents are based on census figures for summer, fall and spring except where noted.

**Note: The variations in total numbers each year within the demographic segments are due to changes students make from term to term in reporting their demographic status.

Enrollment by Status

	2003/04		2004/05		2005/06		2006/07		2007/08		Change 06/07-07/08	5 Year Row Total & Average	
Continuing	1,623	44%	1,893	50%	2,437	58%	921	57%	1,090	56%	18%	7,964	53%
Currently K-12	188	5%	100	3%	178	4%	109	9%	113	10%	4%	688	5%
First-Time	1,126	28%	961	26%	974	21%	304	19%	265	19%	-13%	3,630	23%
First-Time Transfer	483	13%	451	12%	392	8%	98	7%	120	8%	22%	1,544	10%
Returning	307	7%	362	8%	321	6%	117	6%	122	4%	4%	1,229	6%
Returning Transfer	97	2%	98	2%	169	3%	68	3%	74	2%	9%	506	2%
Column Total	3,824	100%	3,865	100%	4,471	100%	1,617	100%	1,784	100%	10%	15,561	100%

Enrollment by Course-Taking Pattern (Fall and Spring only)

	2003/04		2004/05		2005/06		2006/07		2007/08		Change 06/07-07/08	5 Year Row Total & Average	
Day	3,498	92%	3,399	92%	3,884	95%	1,330	87%	1,462	88%	10%	13,573	92%
Evening	228	5%	244	5%	171	3%	196	11%	213	9%	9%	1,052	6%
Day and Evening	94	2%	112	3%	101	2%	37	2%	45	2%	22%	389	2%
Column Total	3,820	100%	3,755	100%	4,156	100%	1,563	100%	1,720	100%	10%	15,014	100%

Enrollment by Educational Goal

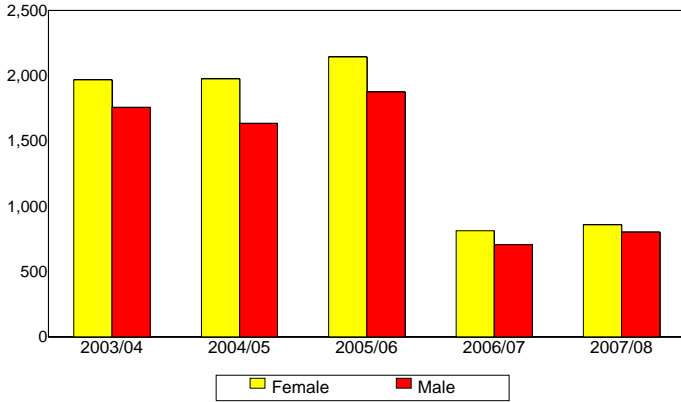
	2003/04		2004/05		2005/06		2006/07		2007/08		Change 06/07-07/08	5 Year Row Total & Average	
Transfer	2,338	63%	2,370	64%	2,786	68%	1,090	70%	897	51%	-18%	9,481	64%
AA/AS w/o Transfer	349	9%	323	8%	265	6%	84	5%	75	4%	-11%	1,096	7%
Certificate w/o Transfer	170	4%	121	3%	104	2%	18	1%	34	2%	89%	447	3%
Acquire/Update Job Skills	157	4%	166	4%	221	5%	77	4%	81	5%	5%	702	4%
Educational Development	131	3%	142	4%	143	3%	64	4%	81	4%	27%	561	4%
Improve Basic Skills	41	1%	29	1%	62	1%	61	5%	88	8%	44%	281	2%
Undecided	613	16%	546	15%	541	13%	159	11%	175	11%	10%	2,034	13%
Unreported	12	0%	62	2%	97	2%	4	0%	303	16%	7,475%	478	3%
Column Total	3,811	100%	3,759	100%	4,219	100%	1,557	100%	1,734	100%	11%	15,080	100%

Source: SMCCCD Data Warehouse

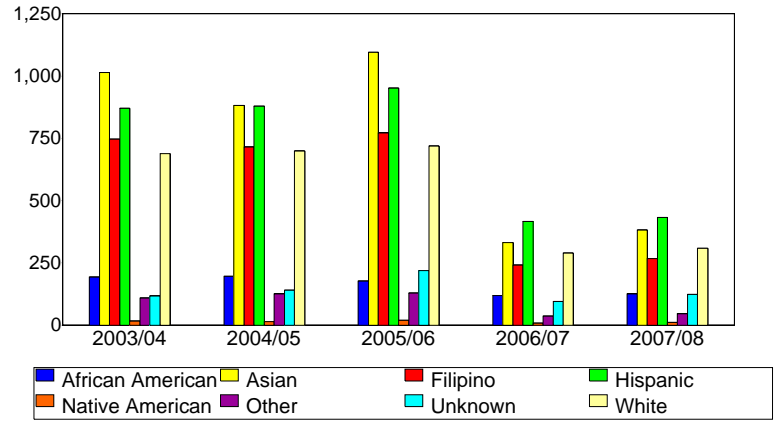
*Note: Counts and percents are based on census figures for summer, fall and spring except where noted.

**Note: The variations in total numbers each year within the demographic segments are due to changes students make from term to term in reporting their demographic status.

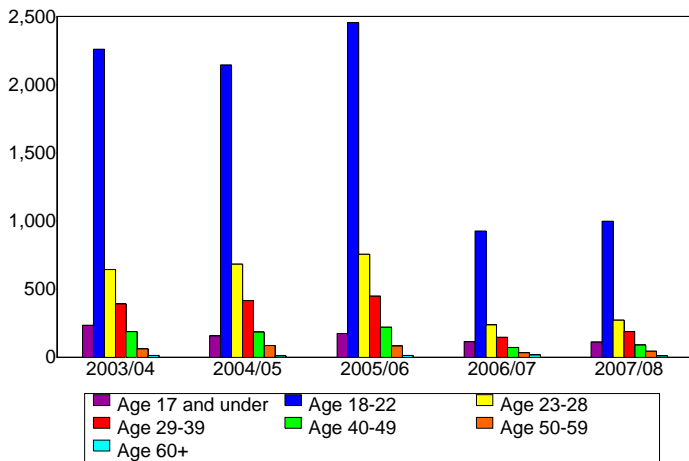
Enrollment by Gender



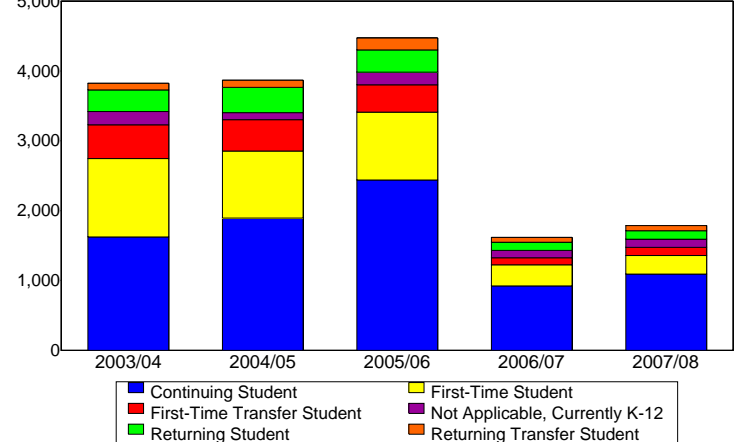
Enrollment by Ethnicity



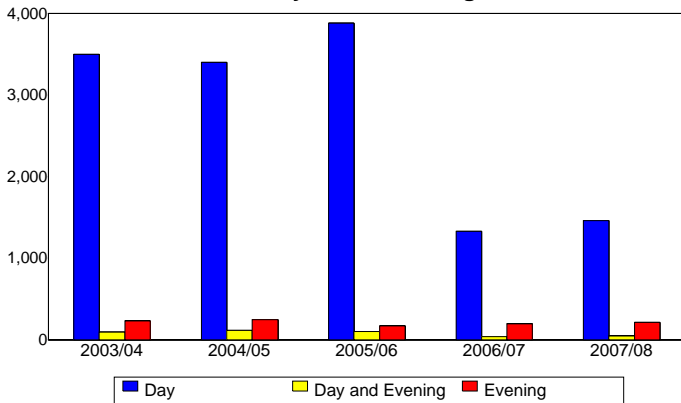
Enrollment by Student Age



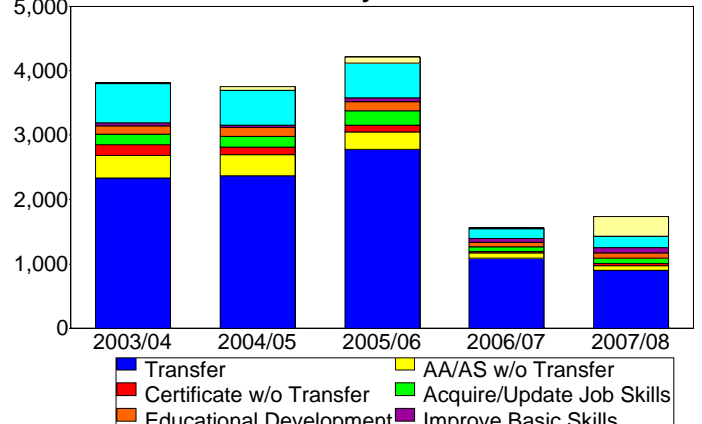
Enrollment by Enrollment Status



Enrollment by Course-Taking Pattern



Enrollment by Educational Goal



Source: SMCCCD Data Warehouse