

Department Productivity: By Year and By Term

	Census Headcount	End of Term Headcount	FTEF	FTES	WSCH	Load	Sections	Max Enroll
2003/04	716	701	14.37	315.54	9,466	659	37	946
2004/05	717	695	15.17	329.29	9,879	651	39	908
2005/06	709	683	14.81	317.65	9,529	643	42	905
2006/07	617	595	12.48	255.45	7,664	614	41	1,024
2007/08	633	591	14.07	276.71	8,301	590	45	1,136

	Census Headcount	End of Term Headcount	FTEF	FTES	WSCH	Load	Sections	Max Enroll
Fall 2003	301	290	6.47	144.21	4,326	668	16	352
Fall 2004	279	276	6.59	143.16	4,295	651	16	327
Fall 2005	335	316	7.49	169.06	5,072	677	20	413
Fall 2006	270	264	6.11	125.97	3,779	619	19	433
Fall 2007	252	239	6.35	132.80	3,984	628	19	461
Spring 2004	305	302	6.55	153.05	4,592	701	15	394
Spring 2005	371	354	7.80	167.79	5,034	645	20	491
Spring 2006	269	263	6.56	126.60	3,798	579	17	349
Spring 2007	233	220	5.44	114.67	3,440	632	16	381
Spring 2008	269	253	6.91	126.77	3,803	551	19	440
Summer 2003	110	109	1.34	18.28	548	408	6	200
Summer 2004	67	65	0.78	18.34	550	706	3	90
Summer 2005	105	104	0.76	21.99	660	866	5	143
Summer 2006	114	111	0.93	14.81	444	480	6	210
Summer 2007	112	99	0.82	17.13	514	628	7	235

Source: SMCCCD Data Warehouse

Census Headcount: Number of duplicated headcount at final census.

End of Term Headcount: Number of duplicated headcount at the end of the term.

FTEF: Total number of full time equivalent faculty assigned.

FTES: Total number of full time equivalent students enrolled at first census.

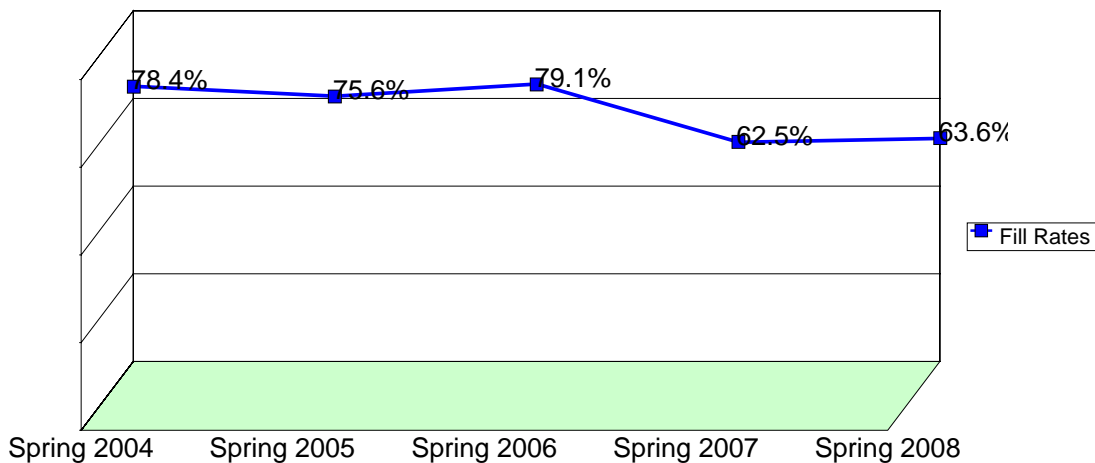
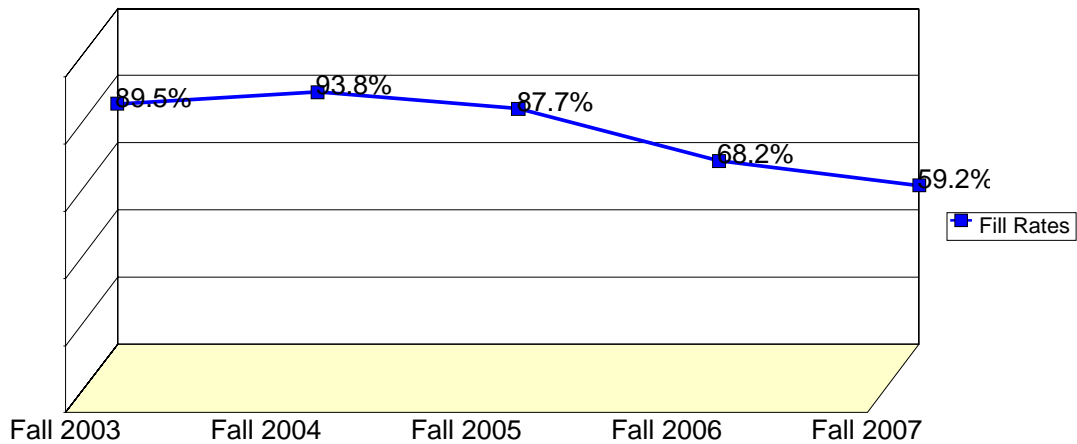
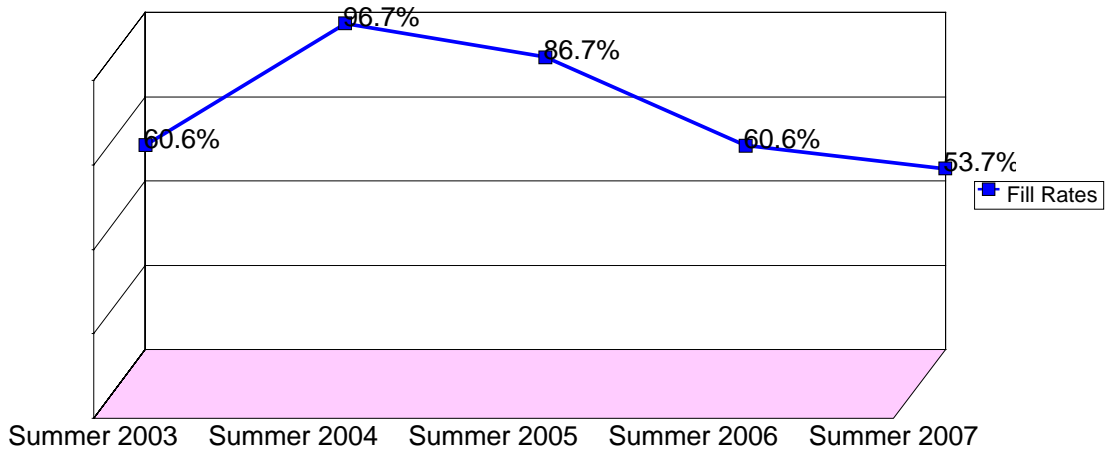
WSCH: Weekly student contact hours generated by census enrollments.

Load: The ratio of WSCH to FTEF, used to measure productivity.

Sections: Total number of sections offered per semester.

Max Enroll: The enrollment capacity or maximum enrollment as defined in curriculum.

Department Fill Rates by Term



Source: SMCCCD Data Warehouse

*Note: For a list of courses included in this report, see Department Productivity: Term by Course. Interdepartmental crosslisted courses are included in fill rate figures only. Crosslisted courses have been combined to calculate a single fill rate.

Fill Rates: The percent a class fills/enrolls based on capacity or enrollment maximum defined in the curriculum (does not include positive attendance, open entry/open exit, or independent study classes).

Department Productivity: Term by Course

				Census	End of	FTEF	FTES	WSCH	Load	Sections	Max
				Headcount	Term						Enroll
Fall 2003	COSM	690	Special Projects	4	4	0.00	0.70	21	#INF	2	20
		700	Cosm Concepts/Practice I	33	31	1.76	21.12	634	360	2	35
		710	Cosm Concepts/Practice II	26	25	0.70	13.07	392	558	2	44
			Cosmetology Concepts II	11	11	0.35	6.39	192	553	1	20
		720	Cosm Concepts/Practice III	33	31	0.61	16.59	498	817	2	44
		730	Cosm Concepts/Practice IV	70	69	0.57	9.54	286	502	3	70
		740	Cosm Concepts/Practice V	47	46	0.17	29.71	891	5,141	2	39
		775	Esthetician	61	60	1.66	40.67	1,220	735	1	60
		785	Spa Technician Training	16	13	0.65	6.40	192	294	1	20
Fall 2004	COSM	690	Special Projects	5	5	0.00	0.17	5	#INF	3	35
		700	Cosm Concepts/Practice I	56	55	2.75	38.80	1,164	424	3	55
		710	Cosm Concepts/Practice II	30	30	0.75	15.09	453	601	2	44
		720	Cosm Concepts/Practice III	27	27	0.55	13.58	407	745	2	44
		730	Cosm Concepts/Practice IV	57	56	0.60	11.73	352	586	2	50
		740	Cosm Concepts/Practice V	57	57	0.41	36.48	1,094	2,691	2	54
		775	Esthetician	32	32	0.89	21.33	640	722	1	30
		785	Spa Technician Training	15	14	0.65	6.00	180	276	1	15
		Fall 2005	COSM	690	Special Projects	8	5	0.00	0.27	8	#INF
700	Cosm Concepts/Practice I			57	52	2.65	41.17	1,235	465	3	55
710	Cosm Concepts/Practice II			32	31	0.69	16.09	483	703	2	44
	Cosmetology Concepts II			16	16	0.00	9.75	293	#INF	1	20
720	Cosm Concepts/Practice III			28	26	0.61	14.08	422	689	2	44
730	Cosm Concepts/Practice IV			74	70	0.71	14.14	424	600	3	70
740	Cosm Concepts/Practice V			63	63	0.37	40.32	1,210	3,300	2	65
775	Esthetician			44	43	1.82	28.04	841	462	2	60
785	Spa Technician Training			13	10	0.65	5.20	156	241	1	15
Fall 2006	COSM	690	Special Projects	2	2	0.00	0.28	9	#INF	4	40
		700	Cosm Concepts/Practice I	33	33	1.63	20.88	626	383	2	42
		710	Cosm Concepts/Practice II	25	25	0.69	12.57	377	549	2	60
		720	Cosm Concepts/Practice III	39	37	1.01	19.79	594	590	3	80
		730	Cosm Concepts/Practice IV	66	65	0.56	9.00	270	482	3	70
		740	Cosm Concepts/Practice V	66	66	0.79	40.64	1,219	1,550	3	90
		775	Esthetician	27	25	0.79	18.00	540	686	1	26
		785	Spa Technician Training	12	11	0.65	4.80	144	223	1	25
		Fall 2007	COSM	690	Special Projects	0	0	0.00			
700	Cosm Concepts/Practice I			51	50	2.81	35.36	1,061	377	3	65
710	Cosm Concepts/Practice II			20	20	0.67	9.94	298	443	2	60
720	Cosm Concepts/Practice III			22	21	0.60	17.10	513	855	2	60
730	Cosm Concepts/Practice IV			50	47	0.37	6.57	197	528	3	70
740	Cosm Concepts/Practice V			51	50	0.44	38.95	1,168	2,655	3	90
775	Esthetician			27	25	0.66	18.00	540	818	1	26
782	Advanced Cosmetology Concepts			17	14	0.12	1.30	39	324	1	30
785	Spa Technician Training			14	12	0.67	5.60	168	252	1	25
Spring 2004	COSM	690	Special Projects	4	4	0.00	0.57	17	#INF	2	10
		700	Cosm Concepts/Practice I	33	31	1.75	21.76	653	372	2	35
		710	Cosm Concepts/Practice II	34	34	0.76	17.87	536	709	2	50

			Census Headcount	End of Term Headcount	FTEF	FTES	WSCH	Load	Sections	Max Enroll			
Spring 2005	COSM	720	Cosm Concept/Practice III	15	15	0.27	7.54	226	828	1	35		
			Cosm Concepts/Practice III	17	17	0.30	9.33	280	933	1	35		
		730	Cosm Concepts/Practice IV	67	67	0.39	9.19	276	707	2	80		
		740	Cosm Concepts/Practice V	59	58	0.72	40.66	1,220	1,686	3	74		
		775	Cosmetician/Esthetician	59	59	1.66	39.33	1,180	711	1	60		
		785	Spa Technician Training	17	17	0.69	6.80	204	295	1	15		
		690	Special Projects	1	1	0.00	0.14	4	#INF	2	10		
		700	Cosm Concepts/Practice I	33	30	1.69	21.76	653	385	2	35		
		710	Cosm Concepts/Practice II	33	32	0.68	17.23	517	760	2	50		
		720	Cosm Concept/Practice III	15	15	0.30	7.54	226	754	1	35		
			Cosm Concepts/Practice III	35	35	1.03	18.93	568	549	2	55		
		730	Cosm Concepts/Practice IV	83	82	0.54	15.77	473	876	3	104		
		740	Cosm Concepts/Practice V	57	56	0.33	37.94	1,138	3,414	2	50		
		760	Cosmetology Instructor Prep	25	22	0.39	3.08	92	239	2	50		
		Spring 2006	COSM	775	Cosmetician/Aesthetician	25	25	0.99	16.25	488	491	1	30
	Cosmetician/Esthetician			32	31	0.95	21.33	640	671	1	32		
782	Advanced Cosm Concepts			17	10	0.19	1.81	54	281	1	25		
785	Spa Technician Training			15	15	0.69	6.00	180	260	1	15		
690	Special Projects			1	0	0.00	0.07	2	#INF	2	10		
700	Cosm Concepts/Practice I			27	27	1.63	17.69	531	325	2	35		
710	Cosm Concepts/Practice II			44	42	1.03	23.30	699	676	3	50		
720	Cosm Concept/Practice III			17	17	0.34	9.07	272	800	1	35		
	Cosm Concepts/Practice III			12	12	0.34	6.22	187	549	1	35		
730	Cosm Concepts/Practice IV			73	70	0.84	11.82	355	422	3	104		
740	Cosm Concepts/Practice V			66	66	0.79	41.77	1,253	1,593	3	65		
775	Cosmetician/Esthetician			19	19	0.93	12.67	380	407	1	0		
785	Spa Technician Training			10	10	0.65	4.00	120	184	1	15		
Spring 2007	COSM			690	Special Projects	1	0	0.00	0.00	0		2	10
				700	Cosm Concepts/Practice I	28	27	1.67	15.85	475	285	3	50
		710	Cosm Concepts/Practice II	26	25	0.70	13.49	405	578	2	50		
		720	Cosm Concept/Practice III	15	14	0.30	8.00	240	800	1	35		
			Cosm Concepts/Practice III	11	11	0.30	5.87	176	587	1	35		
		730	Cosm Concepts/Practice IV	54	51	0.37	7.41	222	595	2	80		
		740	Cosm Concepts/Practice V	62	62	0.72	42.99	1,290	1,783	3	80		
		775	Cosmetician/Esthetician	25	22	0.73	16.67	500	688	1	26		
		785	Spa Technician Training	11	8	0.65	4.40	132	202	1	15		
		Spring 2008	COSM	690	Special Projects	5	5	0.00	0.43	13	#INF	3	25
				700	Cosm Concepts/Practice I	29	25	2.84	19.92	597	210	3	55
				710	Cosm Concepts/Practice II	29	28	0.69	15.24	457	659	2	50
				720	Cosm Concept/Practice III	16	14	0.33	8.29	249	746	1	35
					Cosm Concepts/Practice III	26	23	0.70	21.22	637	909	2	55
				730	Cosm Concepts/Practice IV	71	66	0.54	9.74	292	541	3	104
740	Cosm Concepts/Practice V			42	42	0.46	27.87	836	1,818	2	50		
775	Cosmetician/Esthetician			25	25	0.64	16.67	500	781	1	26		
784	Salon Practice			15	14	0.00	3.00	90	#INF	1	25		
785	Spa Technician Training			11	11	0.70	4.40	132	189	1	15		
Summer 2003	COSM			690	Special Projects	7	7	0.00	0.50	15	#INF	2	30
				730	Cosm Concepts/Practice IV	59	59	0.69	13.65	410	590	2	90

			Census Headcount	End of Term Headcount	FTEF	FTES	WSCH	Load	Sections	Max Enroll	
		740	Cosm Concepts/Practice V	17	17	0.50	1.04	31	62	1	20
		784	Salon Practice	27	26	0.15	3.09	93	617	1	60
Summer 2004	COSM	690	Special Projects	9	8	0.28	0.67	20	71	2	30
		730	Cosm Concepts/Practice IV	58	57	0.50	17.68	530	1,062	1	60
Summer 2005	COSM	690	Special Projects	7	7	0.00	0.38	12	#INF	2	30
		730	Cosm Concepts/Practice IV	74	74	0.65	17.95	539	833	2	90
		775	Esthetician	24	23	0.12	3.66	110	954	1	23
Summer 2006	COSM	690	Special Projects	5	3	0.00	0.70	21	#INF	2	30
		730	Cosm Concepts/Practice IV	65	64	0.65	8.72	261	404	2	90
		740	Cosm Concepts/Practice V	15	15	0.21	2.74	82	386	1	30
		784	Salon Practice	29	29	0.07	2.65	80	1,193	1	60
Summer 2007	COSM	665S,	Make-Up Application Techniques	28	23	0.07	1.27	38	558	1	25
		690	Special Projects	2	0	0.00	0.00	0		2	30
		730	Cosm Concepts/Practice IV	52	49	0.48	12.78	384	794	2	90
		740	Cosm Concepts/Practice V	11	11	0.05	1.34	40	755	1	30
		784	Salon Practice	19	16	0.21	1.74	52	244	1	60

Source: SMCCCD Data Warehouse

*Note: Courses are sorted by crosslist group code. Interdepartmental crosslisted courses are included in fill rate figures only.

Census Headcount: Number of duplicated headcount at final census.

End of Term Headcount: Number of duplicated headcount at the end of the term.

FTEF: Total number of full time equivalent faculty assigned.

FTES: Total number of full time equivalent students enrolled at first census.

WSCH: Weekly student contact hours generated by census enrollments.

Load: The ratio of WSCH to FTEF, used to measure productivity.

Sections: Total number of sections offered per semester.

Max Enroll: The enrollment capacity or maximum enrollment as defined in curriculum.