

Department Enrollment

Enrollment by Term

FA03	FA04	FA05	FA06	FA07	SP04	SP05	SP06	SP07	SP08	SU03	SU04	SU05	SU06	SU07
177	162	192	151	153	177	202	143	126	132	67	67	107	83	91

Enrollment by Gender

	2003/04		2004/05		2005/06		2006/07		2007/08		Change 06/07-07/08	5 Year Row Total & Average	
Female	208	90%	233	91%	211	91%	174	91%	206	92%	18%	1,032	91%
Male	21	10%	21	9%	17	8%	15	8%	15	7%	0%	89	8%
Unreported	1	0%	2	1%	4	2%	1	1%	2	1%	100%	10	1%
Column Total	230	100%	256	100%	232	100%	190	100%	223	100%	17%	1,131	100%

Enrollment by Ethnicity

	2003/04		2004/05		2005/06		2006/07		2007/08		Change 06/07-07/08	5 Year Row Total & Average	
African American	13	4%	19	5%	14	4%	14	4%	8	2%	-43%	68	4%
Asian	81	22%	91	23%	79	17%	68	17%	78	19%	15%	397	20%
Filipino	36	8%	35	8%	38	8%	31	10%	33	10%	6%	173	9%
Hispanic	99	21%	96	19%	79	18%	83	22%	103	29%	24%	460	22%
Native American	1	0%	5	1%	2	1%	8	2%			-100%	16	1%
Other	15	4%	28	7%	42	10%	18	5%	16	5%	-11%	119	6%
White	166	39%	134	31%	150	34%	121	33%	106	24%	-12%	677	32%
Unreported	10	2%	23	6%	38	9%	17	5%	32	10%	88%	120	7%
Column Total	421	100%	431	100%	442	100%	360	100%	376	100%	4%	2030	100%

Enrollment by Age

	2003/04		2004/05		2005/06		2006/07		2007/08		Change 06/07-07/08	5 Year Row Total & Average	
Under 18			2	1%	4	2%	3	1%	2	1%	-33%	11	1%
Age 18-22	71	33%	91	39%	92	42%	83	47%	87	46%	5%	424	41%
Age 23-28	68	32%	70	30%	65	29%	56	30%	67	30%	20%	326	30%
Age 29-39	55	19%	56	19%	51	18%	39	17%	42	13%	8%	243	17%
Age 40-49	28	12%	27	8%	18	6%	12	3%	20	4%	67%	105	7%
Age 50-59	11	2%	15	4%	9	3%	6	2%	14	5%	133%	55	3%
Age 60+	3	1%	1	0%	1	0%	1	0%	1	0%	0%	7	0%
Column Total	236	100%	262	100%	240	100%	200	100%	233	100%	17%	1,171	100%

Source: SMCCCD Data Warehouse

*Note: Counts and percents are based on census figures for summer, fall and spring except where noted.

**Note: The variations in total numbers each year within the demographic segments are due to changes students make from term to term in reporting their demographic status.

Enrollment by Status

	2003/04		2004/05		2005/06		2006/07		2007/08		Change 06/07-07/08	5 Year Row Total & Average	
Continuing	185	79%	185	72%	190	79%	154	78%	173	70%	12%	887	75%
First-Time	17	4%	23	6%	36	9%	22	8%	21	8%	-5%	119	7%
First-Time Transfer	29	8%	50	14%	21	5%	18	6%	34	15%	89%	152	10%
Returning	31	7%	39	7%	21	4%	24	6%	37	5%	54%	152	6%
Returning Transfer	13	2%	11	1%	12	2%	14	2%	13	2%	-7%	63	2%
Column Total	275	100%	308	100%	280	100%	232	100%	278	100%	20%	1,373	100%

Enrollment by Course-Taking Pattern (Fall and Spring only)

	2003/04		2004/05		2005/06		2006/07		2007/08		Change 06/07-07/08	5 Year Row Total & Average	
Day	123	53%	129	55%	133	58%	109	62%	100	52%	-8%	594	56%
Evening	110	46%	126	43%	101	41%	81	38%	124	45%	53%	542	43%
Day and Evening	3	1%	10	2%	6	1%	2	1%	11	3%	450%	32	2%
Column Total	236	100%	265	100%	240	100%	192	100%	235	100%	22%	1,168	100%

Enrollment by Educational Goal

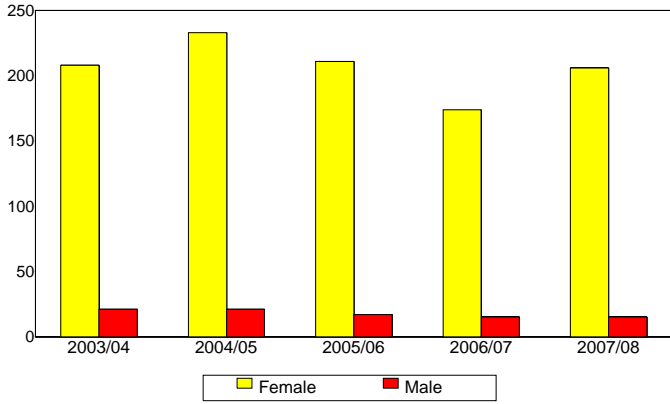
	2003/04		2004/05		2005/06		2006/07		2007/08		Change 06/07-07/08	5 Year Row Total & Average	
Transfer	67	21%	62	21%	70	26%	86	40%	55	25%	-36%	340	26%
AA/AS w/o Transfer	23	10%	14	6%	15	6%	16	8%	17	7%	6%	85	7%
Certificate w/o Transfer	97	35%	88	31%	71	30%	34	19%	43	21%	26%	333	27%
Acquire/Update Job Skills	55	20%	62	22%	65	25%	49	21%	60	23%	22%	291	22%
Educational Development	11	4%	11	3%	10	4%	5	1%	14	5%	180%	51	4%
Improve Basic Skills	3	1%			1	0%	1	1%	2	0%	100%	7	0%
Undecided	20	9%	39	16%	27	10%	23	11%	13	5%	-43%	122	10%
Unreported									38	14%		38	3%
Column Total	276	100%	276	100%	259	100%	214	100%	242	100%	13%	1,267	100%

Source: SMCCCD Data Warehouse

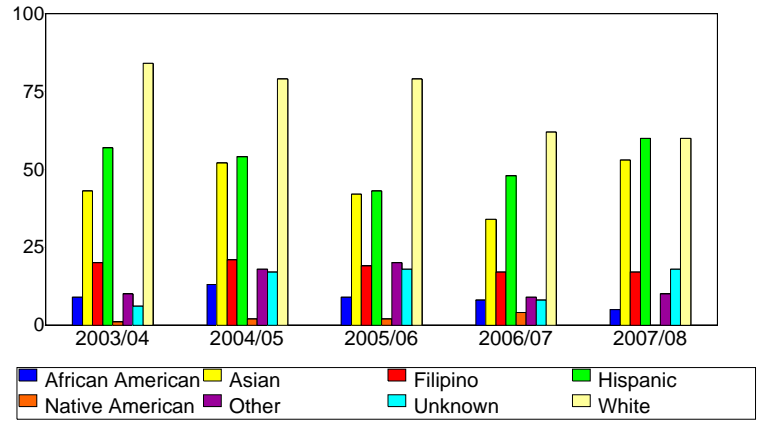
*Note: Counts and percents are based on census figures for summer, fall and spring except where noted.

**Note: The variations in total numbers each year within the demographic segments are due to changes students make from term to term in reporting their demographic status.

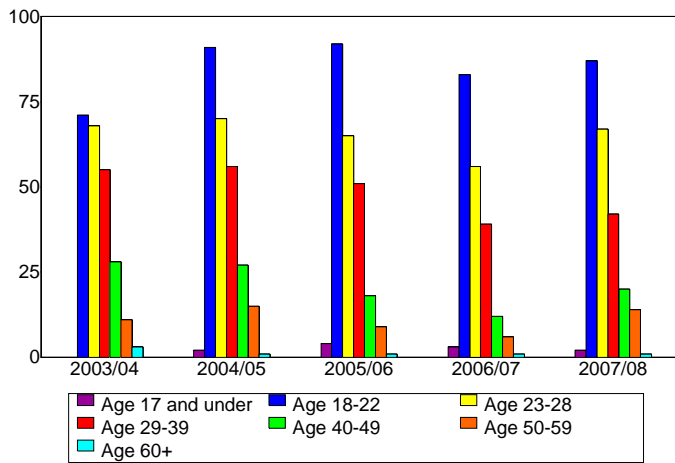
Enrollment by Gender



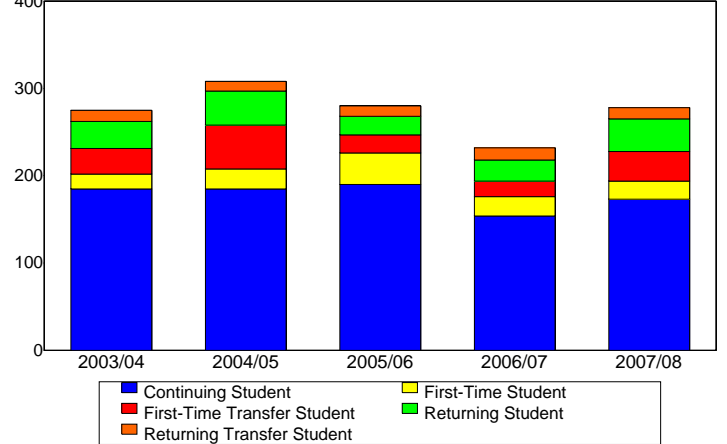
Enrollment by Ethnicity



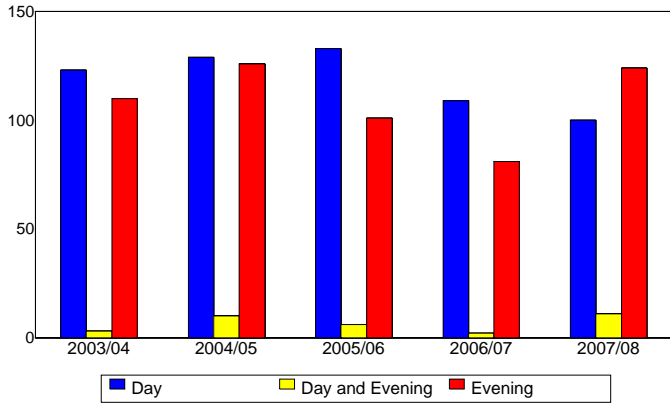
Enrollment by Student Age



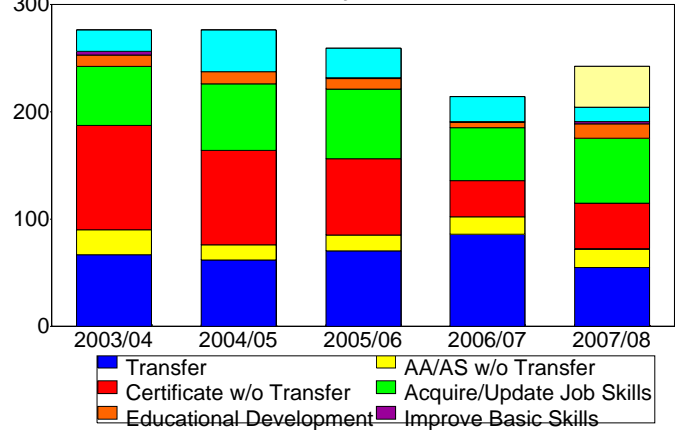
Enrollment by Enrollment Status



Enrollment by Course-Taking Pattern



Enrollment by Educational Goal



Source: SMCCCD Data Warehouse