

## Department Enrollment

### Enrollment by Term

FA03	FA04	FA05	FA06	FA07	SP04	SP05	SP06	SP07	SP08	SU03	SU04
305	338	347	412	455	295	320	349	407	436	43	32

### Enrollment by Gender

	2003/04		2004/05		2005/06		2006/07		2007/08		Change 06/07-07/08	5 Year Row Total & Average	
Female	300	56%	319	57%	313	55%	364	53%	386	51%	6%	1,682	54%
Male	242	43%	235	42%	248	45%	303	46%	342	47%	13%	1,370	45%
Unreported	2	0%	3	1%	2	0%	10	1%	14	2%	40%	31	1%
<b>Column Total</b>	<b>544</b>	<b>100%</b>	<b>557</b>	<b>100%</b>	<b>563</b>	<b>100%</b>	<b>677</b>	<b>100%</b>	<b>742</b>	<b>100%</b>	<b>10%</b>	<b>3,083</b>	<b>100%</b>

### Enrollment by Ethnicity

	2003/04		2004/05		2005/06		2006/07		2007/08		Change 06/07-07/08	5 Year Row Total & Average	
African American	55	8%	49	7%	28	4%	49	6%	66	8%	35%	247	7%
Asian	122	18%	126	18%	154	22%	149	18%	151	17%	1%	702	19%
Filipino	118	19%	120	16%	159	24%	212	27%	197	22%	-7%	806	22%
Hispanic	142	23%	172	26%	151	22%	157	18%	192	22%	22%	814	22%
Native American	4	1%			2	0%	9	1%	5	1%	-44%	20	1%
Other	27	5%	29	4%	31	5%	36	5%	29	4%	-19%	152	4%
White	148	22%	176	25%	150	20%	155	18%	177	19%	14%	806	20%
Unreported	27	5%	18	3%	21	3%	52	7%	74	8%	42%	192	5%
<b>Column Total</b>	<b>643</b>	<b>100%</b>	<b>690</b>	<b>100%</b>	<b>696</b>	<b>100%</b>	<b>819</b>	<b>100%</b>	<b>891</b>	<b>100%</b>	<b>9%</b>	<b>3739</b>	<b>100%</b>

### Enrollment by Age

	2003/04		2004/05		2005/06		2006/07		2007/08		Change 06/07-07/08	5 Year Row Total & Average	
Under 18	2	0%	2	1%	2	0%	8	1%	5	1%	-38%	19	1%
Age 18-22	370	70%	384	69%	405	73%	482	75%	558	79%	16%	2,199	74%
Age 23-28	90	18%	110	20%	102	18%	119	16%	109	12%	-8%	530	16%
Age 29-39	49	7%	36	6%	31	5%	41	4%	53	5%	29%	210	5%
Age 40-49	27	4%	22	3%	19	3%	22	2%	18	2%	-18%	108	3%
Age 50-59	6	1%	5	1%	9	1%	8	1%	8	1%	0%	36	1%
Age 60+			2	0%	1	0%	1	0%			-100%	4	0%
<b>Column Total</b>	<b>544</b>	<b>100%</b>	<b>561</b>	<b>100%</b>	<b>569</b>	<b>100%</b>	<b>681</b>	<b>100%</b>	<b>751</b>	<b>100%</b>	<b>10%</b>	<b>3,106</b>	<b>100%</b>

Source: SMCCCD Data Warehouse

\*Note: Counts and percents are based on census figures for summer, fall and spring except where noted.

\*\*Note: The variations in total numbers each year within the demographic segments are due to changes students make from term to term in reporting their demographic status.

**Enrollment by Status**

	2003/04		2004/05		2005/06		2006/07		2007/08		Change 06/07-07/08	5 Year Row Total & Average	
Continuing	428	78%	448	80%	476	82%	558	79%	586	75%	5%	2,496	78%
Currently K-12	1	0%	2	0%					4	1%		7	0%
First-Time	47	8%	50	8%	56	9%	76	10%	66	11%	-13%	295	9%
First-Time Transfer	35	6%	34	6%	27	4%	32	5%	40	7%	25%	168	6%
Returning	42	6%	39	5%	20	3%	34	4%	51	5%	50%	186	5%
Returning Transfer	12	2%	11	1%	12	2%	23	3%	28	2%	22%	86	2%
<b>Column Total</b>	<b>565</b>	<b>100%</b>	<b>584</b>	<b>100%</b>	<b>591</b>	<b>100%</b>	<b>723</b>	<b>100%</b>	<b>775</b>	<b>100%</b>	<b>7%</b>	<b>3,238</b>	<b>100%</b>

**Enrollment by Course-Taking Pattern (Fall and Spring only)**

	2003/04		2004/05		2005/06		2006/07		2007/08		Change 06/07-07/08	5 Year Row Total & Average	
Day	425	76%	444	79%	448	78%	543	79%	565	75%	4%	2,425	77%
Evening	135	24%	130	21%	135	22%	141	21%	204	25%	45%	745	23%
Day and Evening	1	0%			1	0%						2	0%
<b>Column Total</b>	<b>561</b>	<b>100%</b>	<b>574</b>	<b>100%</b>	<b>584</b>	<b>100%</b>	<b>684</b>	<b>100%</b>	<b>769</b>	<b>100%</b>	<b>12%</b>	<b>3,172</b>	<b>100%</b>

**Enrollment by Educational Goal**

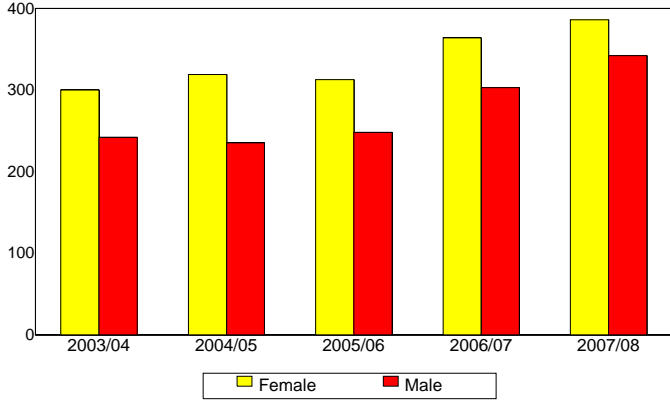
	2003/04		2004/05		2005/06		2006/07		2007/08		Change 06/07-07/08	5 Year Row Total & Average	
Transfer	408	74%	428	76%	456	80%	572	83%	461	61%	-19%	2,325	74%
AA/AS w/o Transfer	49	8%	37	7%	27	4%	27	3%	34	3%	26%	174	5%
Certificate w/o Transfer	18	3%	14	2%	8	1%	5	1%	9	1%	80%	54	2%
Acquire/Update Job Skills	11	2%	14	2%	21	4%	15	1%	23	3%	53%	84	3%
Educational Development	10	2%	9	2%	7	1%	7	1%	18	3%	157%	51	2%
Improve Basic Skills			1	0%	1	0%	3	0%	4	1%	33%	9	0%
Undecided	52	10%	65	11%	52	9%	66	10%	58	8%	-12%	293	9%
Unreported	1	0%							156	20%		157	6%
<b>Column Total</b>	<b>549</b>	<b>100%</b>	<b>568</b>	<b>100%</b>	<b>572</b>	<b>100%</b>	<b>695</b>	<b>100%</b>	<b>763</b>	<b>100%</b>	<b>10%</b>	<b>3,147</b>	<b>100%</b>

Source: SMCCCD Data Warehouse

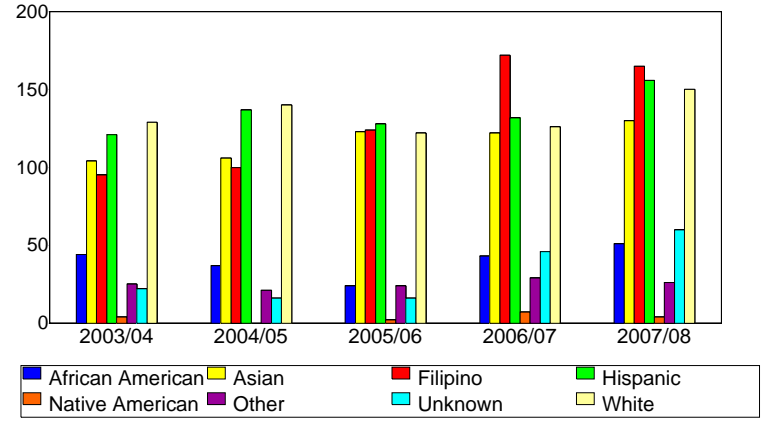
\*Note: Counts and percents are based on census figures for summer, fall and spring except where noted.

\*\*Note: The variations in total numbers each year within the demographic segments are due to changes students make from term to term in reporting their demographic status.

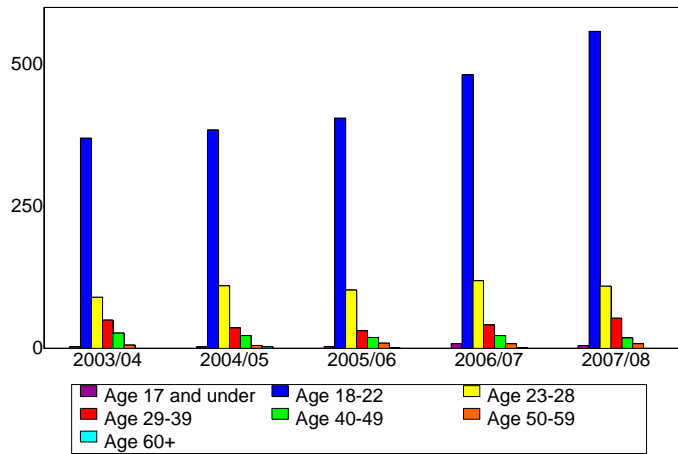
**Enrollment by Gender**



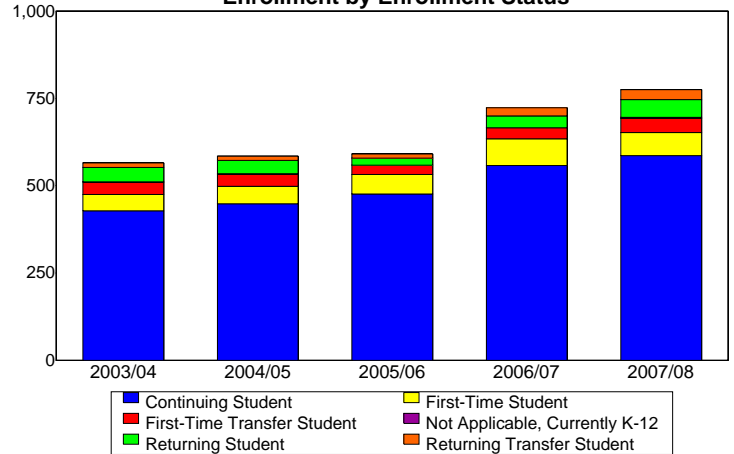
**Enrollment by Ethnicity**



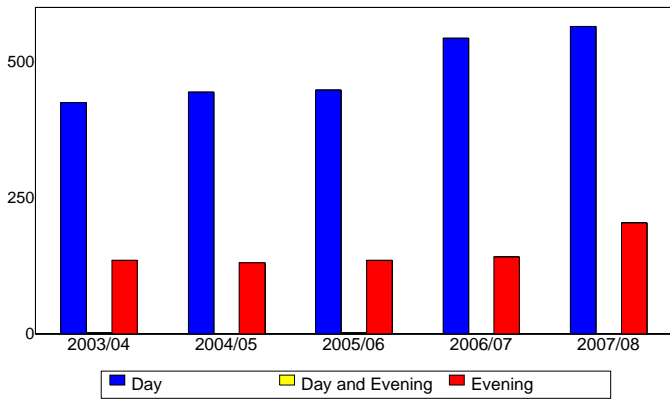
**Enrollment by Student Age**



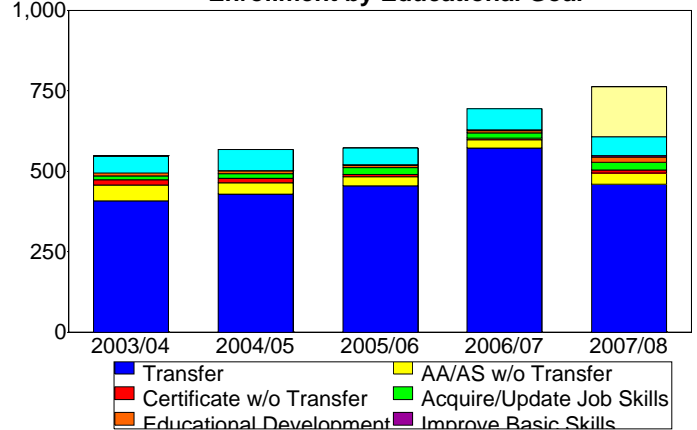
**Enrollment by Enrollment Status**



**Enrollment by Course-Taking Pattern**



**Enrollment by Educational Goal**



Source: SMCCCD Data Warehouse